



# WORCESTER STATE UNIVERSITY

---

## FACT BOOK 2013



Cover Photo: Wasylean Residence Hall

# FACT BOOK 2013



**Office of Institutional Research  
Worcester State University  
486 Chandler Street  
Worcester, Massachusetts 01602-2597  
508-929-8121**

Prepared by:  
Kristina Rearick, Ed.D., Research Analyst

Kenneth Smith, Director of Institutional Research

*Worcester State University is an equal employment/ education opportunity institution.*



## Table of Contents

### INTRODUCTION

President's Message.....	1
Board and Standing Committees .....	2
Board of Trustees .....	2
Standing Committees, 2013-2014.....	2
Campus Administration, Fall 2013.....	3
Department Chairs, Fall 2013 .....	4
Organizational Chart.....	5

### GENERAL INFORMATION

Worcester State University <i>SNAPSHOT</i> , Fall 2013 .....	11
Brief History of WSU .....	12
Prologue and Mission Statement .....	13
Institutional Goals, FY 2012-2014 .....	14
Accreditation .....	15

### STUDENT PROFILE

Longitudinal Enrollment, Fall 2004-Fall 2013 .....	17
Students by Country of Residence, Fall 2013 .....	18
Students by State of Residence, Fall 2013 .....	19
Students by Massachusetts County of Residence, Fall 2013.....	20
Age of Degree-seeking, First-time Freshmen, Fall 2013 .....	21
High School GPA of Degree-seeking, First-time Freshmen, Fall 2013 .....	21
SAT Scores of Degree-seeking, First-time Freshmen, Fall 2013 .....	22
Average Combined SAT, Fall 2013.....	22
Gender and Ethnicity of Degree-seeking, First-time Freshmen, Fall 2013 .....	23
Age of New Degree-seeking, Transfer Students, Fall 2013 .....	24
Ethnicity of New Degree-seeking, Transfer Students, Fall 2013.....	24
Transfer Institutions, Fall 2013.....	25
Majors of New Degree-seeking, Transfer Students, Fall 2013.....	26
Ethnicity of Full-time Students, Fall 2013 .....	27
Ethnicity of Part-time Students, Fall 2013 .....	27
Gender of Full-time Students, Fall 2013 .....	28
Gender of Part-time Students, Fall 2013.....	28
Total Enrollment by Student Classification, Fall 2013 .....	29
On-Campus Housing by State of Residence and Class, Fall 2013.....	30

### INSTRUCTIONAL PROGRAMS

Undergraduate Student Enrollment by 1 <sup>st</sup> and 2 <sup>nd</sup> Major, Fall 2013.....	31
Graduate Student Enrollment by Major, Fall 2013 .....	35

## ACADEMIC ACHIEVEMENT/LEARNING OUTCOMES

Grade Distribution of First-time, Full-time, Degree-seeking Freshmen, Fall 2013 .....	37
First-time, Full-time Freshmen Retention and Graduation Rates, Fall 2005-Fall 2012 Freshmen Cohorts.....	38
Degrees Conferred by CIP Code Category, FY 2013 .....	39

## PERSONNEL PROFILE

Employees/Staff, Fall 2013 .....	41
Faculty by Institution of Highest Degree, Fall 2013 .....	44
Full-time Faculty by Department and Rank, Fall 2013.....	45
Full-time Faculty by Gender and Ethnicity, Fall 2013.....	46
Full-time Faculty by Gender and Tenure, Fall 2013 .....	46
Full-time Faculty by Gender and Rank, Fall 2013 .....	46
Full-time Faculty by Age Range and Rank, Fall 2013 .....	46
Full-time Faculty by Highest Degree Earned, Fall 2013 .....	47
Average Salaries of Full-time Faculty by Rank and Gender, Fall 2013.....	48
Average Faculty Salaries Comparison, AY 2011-2012.....	49

## LIBRARY INFORMATION

Library Holdings, FY 2012-2013 .....	51
--------------------------------------	----

## FACILITIES INFORMATION

Physical Plant Facilities, Fall 2013 .....	53
Campus Map.....	54

## INSTITUTIONAL ADVANCEMENT

Foundation Board of Directors, Alumni Board and Directors, 2013-2014.....	55
Total Market Value of Funds Under Management, FY 2009-FY 2013.....	56
Alumni by Massachusetts County of Residence, 2013 .....	57

## FINANCIAL INFORMATION

Tuition and Fees per Academic Year, 2004-2013.....	59
Financial Aid Awards, FY 2009-FY 2013 .....	60
Revenues and Expenditures, FY 2011-FY 2013.....	61
Fund Revenues by Source, FY 2013 .....	62
Fund Expenditures by Functions, FY 2013.....	62

## Introduction

### President's Message

#### A Message from Barry M. Maloney, President of Worcester State University

Seeds that were planted in 2012 began to take root in 2013, as Worcester State University had its best year ever in private fundraising, our community involvement expanded, and we extended our reach world-wide – as our students continue to change the way the world works. Enrollment is up, the graduation rate improved, and state support grew. An independent financial audit showed we are fiscally healthy, and our athletes made us proud, both on and off the field. The Princeton Review named WSU one of 2013's 75 Best Value public universities in the country – one of only two in Massachusetts – and, for the 10th year in a row, we made the Review's 2014 ranking as a "Best in the Northeast" university. It was indeed a good year.



Construction progressed on a new 120,000-square-foot residence hall, which will help shift the ratio of on-campus to commuter students by providing 400 new beds and a 600-seat dining facility to campus. It was named in honor of Lt. Col. James Sheehan, '55, who contributed the largest single gift - \$3 million – in Worcester State's history. A second new facility, a 100,000-square-foot Wellness

Center, is on track for a 2016 opening. Both facilities will involve more students in campus life and will benefit our community for years to come.

Our faculty and students continue to pursue new ways to connect learning and life. The theme semester topic, "Doing Right in a Complex World," engaged the university and greater community through thought-provoking lectures, theater performances, and more. Internships, service learning opportunities, and departmental advisory councils are providing new connections for students. Expanding partnerships with the Worcester Art Museum and with area businesses are providing real-world experiences that complement what's learned in the classroom, as did the "Next Big Idea" contest.

Your university, founded in 1874, continues to rely on hard data to drive all that we do. I hope you find this report, compiled by our Office of Institutional Research, valuable.

Sincerely,

A handwritten signature in dark ink, reading "Barry M. Maloney". The signature is written in a cursive, flowing style.

Barry M. Maloney  
President

## Board and Standing Committees, 2013-2014

### Board of Trustees

Ronald R. Valerio '75, *Chair*  
George H. Albro '65, '68 M.Ed., *Vice Chair*  
Craig L. Blais, *Vice Chair*  
Stephen J. Bostic '77, '86 M.Ed.  
Isabel Gonzalez-Webster  
Maryanne M. Hammond '69, '72 M.Ed.

Julianne Harris '14  
Stephen F. Madaus  
Terence J. Shanley  
Shirley A. Steele '59, '63 M.Ed.  
Robert L. Thomas

### Standing Committees 2013-2014

#### Academic/Student Development:

Robert Thomas, *Chair*  
Julianne Harris  
Terence Shanley

#### Finance and Facilities:

Craig Blais, *Chair*  
George Albro  
Shirley Steele

#### Human Resources:

George Albro, *Chair*  
Craig Blais  
Isabel Gonzalez-Webster  
Maryanne Hammond  
Julianne Harris  
Terence Shanley

#### Planning and Development:

Maryanne Hammond, *Chair*  
George Albro  
Julianne Harris  
Shirley Steele

Note: Chair Ronald Valerio is an ex-officio voting member of each committee.  
President Barry Maloney is an ex-officio non-voting member of each committee



## Campus Administration, Fall 2013\*

Barry Maloney, <i>President</i>	Honee Hess, <i>Executive Director, Worcester Center for Crafts</i>
Charles Cullum, <i>Provost/VP, Academic Affairs</i>	Mary Jo Marion, <i>Executive Director, Latino Educational Institute</i>
Sibyl M. Brownlee, <i>VP, Student Affairs</i>	Karen Sharpe, <i>Executive Director, University Advancement</i>
Kathleen M. Eichelroth, <i>VP, Administration and Finance</i>	Jillian Anderson, <i>Director, Career Services</i>
Thomas M. McNamara, <i>VP, University Advancement</i>	Lynn E. Bromley, <i>Director, Payroll/Benefits</i>
Donald W. Vescio, <i>Interim VP of Enrollment Management</i>	Brenda Bussey, <i>Director, Procurement &amp; Accounts Payable</i>
Anthony Adade, <i>Associate Vice President, University Technology Services</i>	Julie Carmel, <i>Director, Student Accounts</i>
Julie Kazarian, <i>Assoc. VP/Student Affairs, Dean of Students</i>	Marion Catacchio, <i>Director, Financial Records, University Advancement</i>
Patricia Marshall, <i>Associate VP, Academic Affairs/Interim Dean, School of Humanities and Social Sciences</i>	Julie A. Chaffee, <i>Director, Registrar</i>
Robin J. Quill, <i>Assoc. VP/Comptroller, Administration and Finance</i>	Susan E. Chapman, <i>Director, Strategic Initiatives</i>
Roberta Kyle, <i>Acting Assoc. VP for Continuing Ed. &amp; Acting Dean of Graduate Studies</i>	Sainath Chinnaswamy, <i>Director, Library</i>
Carol Lerch, <i>Asst. VP, Assessment and Planning</i>	Joseph DiCarlo, <i>Director, Admissions</i>
Carl Herrin, <i>Asst. to the President for International, Community, &amp; Government Affairs</i>	James Driscoll, <i>Director of Budget, Planning &amp; Policy Development</i>
Calvin Hill, <i>Asst. to the President, Director, Office of Diversity, Inclusion &amp; Equal Opportunity</i>	Melissa Fleming, <i>Director, Student Affairs/Conference &amp; Event Services</i>
Linda Larrivee, <i>Dean, School of Education, Health &amp; Natural Sciences</i>	Alan Jackson, <i>Director, Veterans Affairs</i>
Stephanie Chalupka, <i>Associate Dean for Nursing</i>	Frances Manocchio, <i>Director, Disability Services</i>
Raynold Lewis, <i>Assoc. Dean, Education, Health &amp; Natural Sciences</i>	Jayne A. McGinn, <i>Director, Financial Aid</i>
Timothy J. Sullivan, <i>Assoc. Dean, Student Affairs &amp; Director, Office of Student Involvement &amp; Leadership Development</i>	Rosemary F. Naughton, <i>Chief of University Police</i>
Adrian Gage, <i>Assistant Dean, Student Affairs/Director of Residence Life</i>	Sandra K. Olson, <i>Director, Facilities</i>
Sara Grady, <i>Assistant Dean, Graduate &amp; Continuing Education</i>	Katey Palumbo, <i>Director, International Programs</i>
Laura A. Murphy, <i>Assistant Dean/Director, Counseling Services</i>	Angela Quitadamo, <i>Director of Retention</i>
Tammy Tebo, <i>Assistant Dean, Academic Success Center</i>	Nancy Ramsdell, <i>Director, Administrative Services, Administration &amp; Finance</i>
Marcella Uribe-Jennings, <i>Assistant Dean/Director, Office of Multicultural Affairs</i>	David Roach, <i>Director, Center for Effective Instruction</i>
Camilla H. Caffrey, <i>Executive Director of Alumni</i>	Susan Seibel, <i>Director, Intensive English Language Institute</i>
	Kenneth A. Smith, <i>Director, Institutional Research</i>
	Gerald E. Sorge, <i>Director, Academic Affairs Administrative Support</i>
	Russell E. Vickstrom, <i>Director, Human Resources</i>
	Mark Wagner, <i>Director, The Center for Service Learning &amp; Civic Engagement</i>
	Karen Woods Weierman, <i>Director, Honors Program</i>
	John Meany, <i>Acting Director, Athletics</i>

Note: President Maloney is an ex-officio non-voting member of each committee.

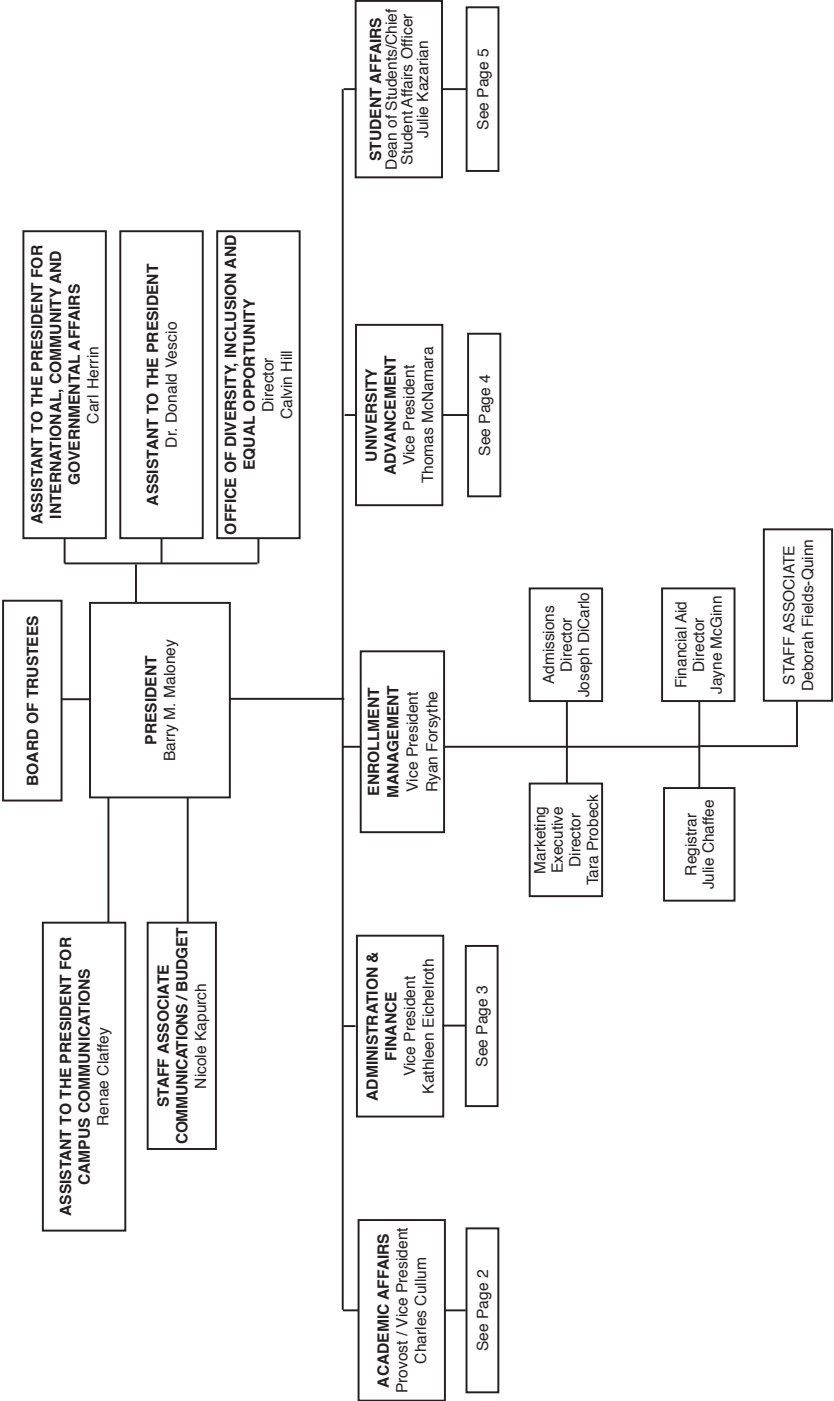
\*As of Fall 2013 and does not correspond with the organizational chart

## Department Chairs, Fall 2013

<i>Name</i>	<i>Department</i>
Steve Oliver	Biology
Renuka Jain	Business and Economics
Margaret Kerr	Chemistry
Don Bullens	Communication
Keith Darrow	Communication Sciences & Disorders
Elena Braynova	Computer Science
Stephen Morreale	Criminal Justice
Carol Donnelly	Education
Dennis Quinn	English
Lynn Bloomberg	Health Sciences
Frank Minasian	History and Political Science
Mary Fowler	Mathematics
Robyn Leo	Nursing
Margaret Hart	Occupational Therapy
Henry Theriault	Philosophy
Patricia Benjamin	Physical and Earth Science
Bonnie Kanner	Psychology
Matthew Johnsen	Sociology
Thomas Conroy	Urban Studies
Adam Zahler	Visual & Performing Arts
Ana Perez-Manrique	World Languages

Organizational Chart\*

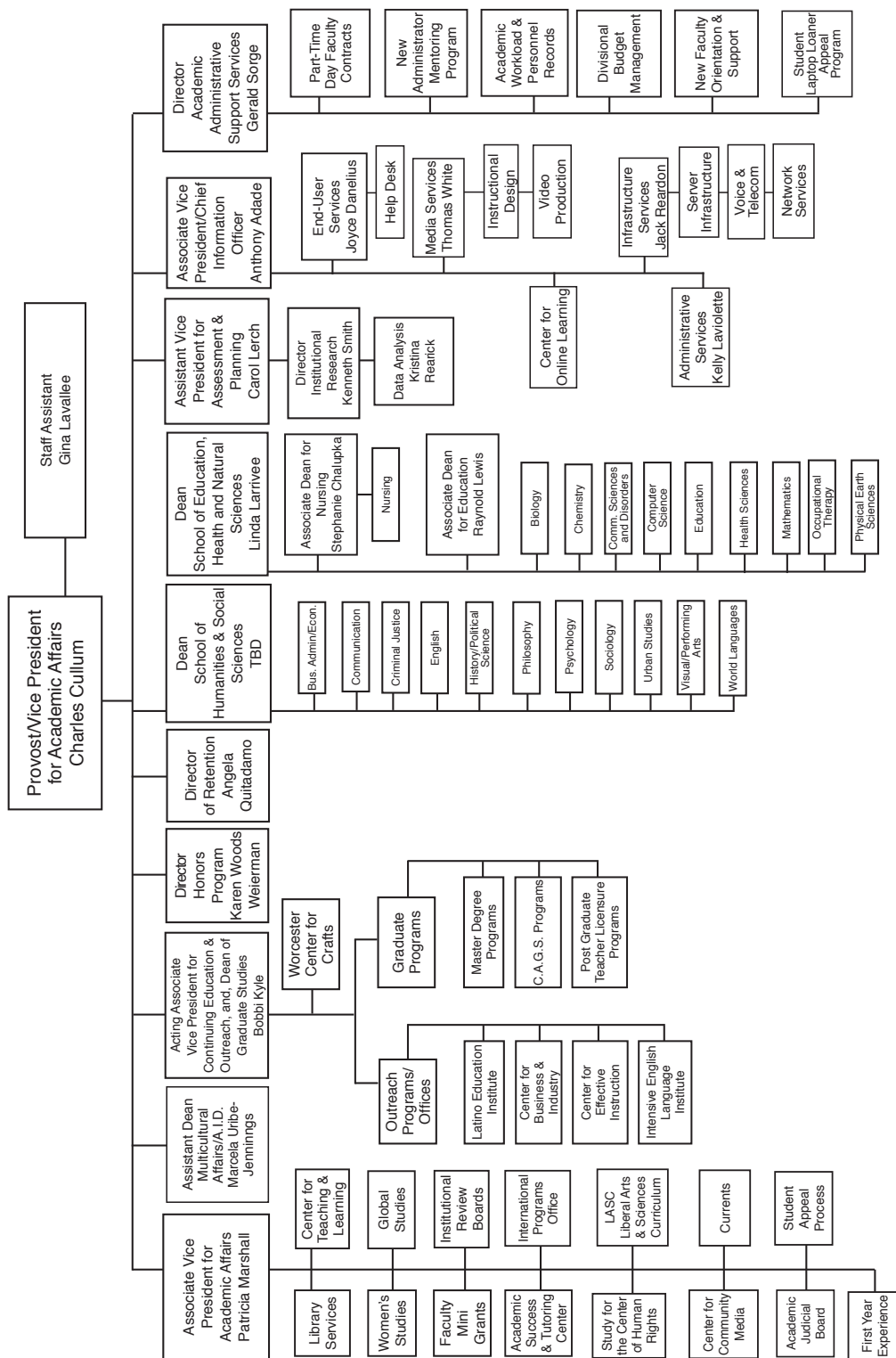
WORCESTER STATE UNIVERSITY  
TABLE OF ORGANIZATION



Page 1 of 5  
January 2014  
(10)

\*Reflective of WSU organization as of January 2014

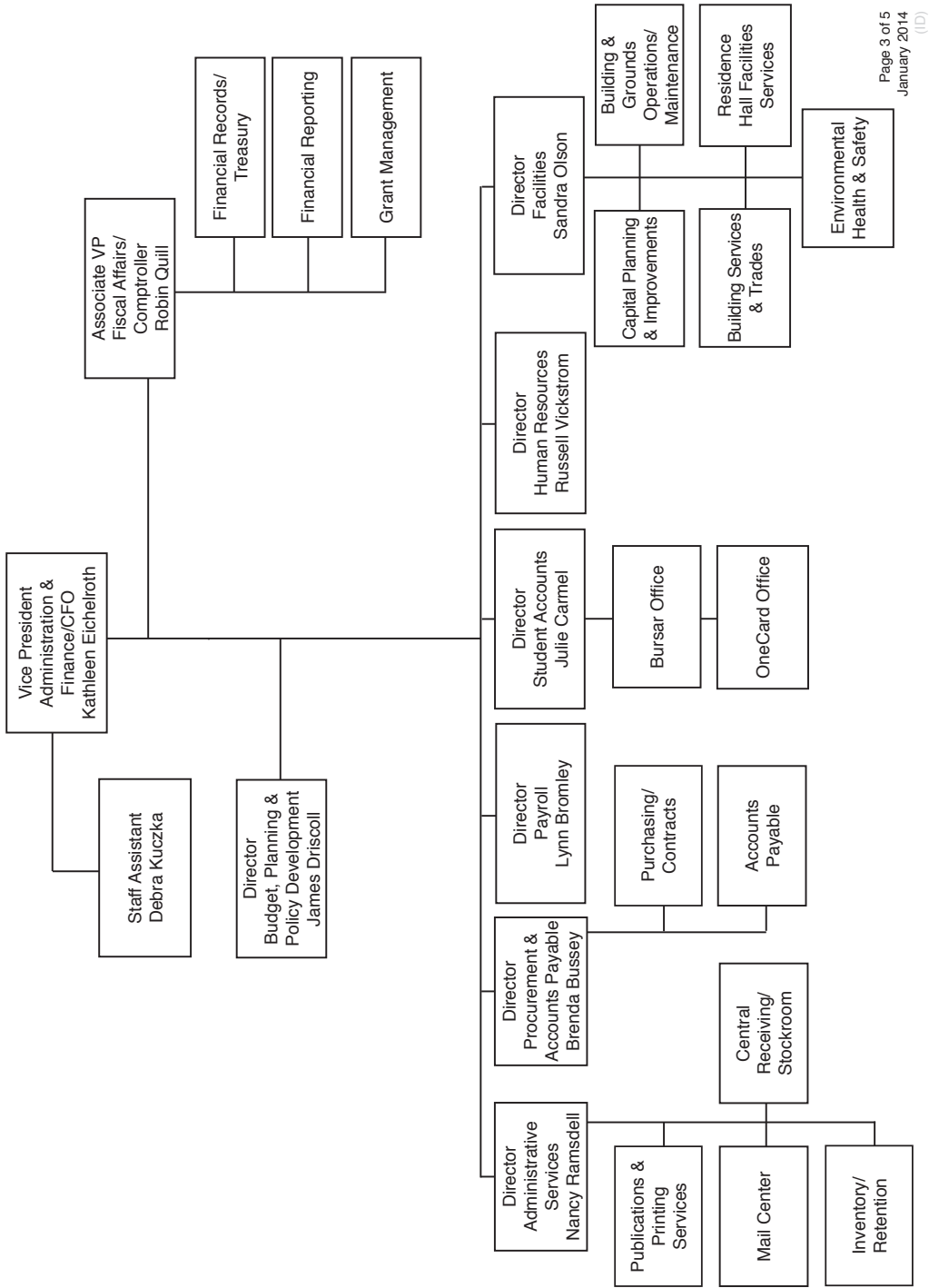
## Division of Academic Affairs



Page 2 of 5  
January 2014  
(10)

\*Reflective of WSU organization as of January 2014

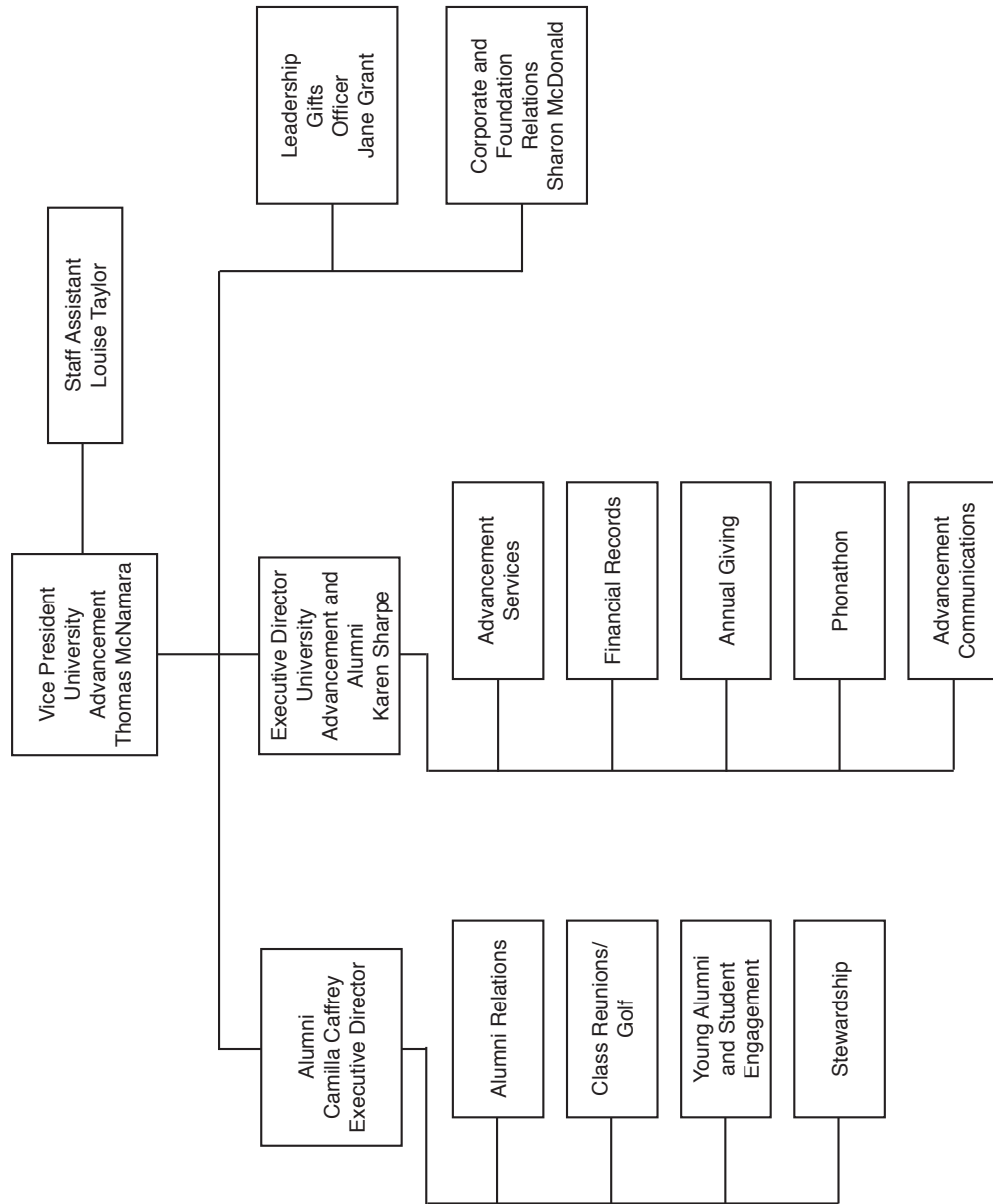
Division of Administration and Finance



Page 3 of 5  
January 2014  
(10)

\*Reflective of WSU organization as of January 2014

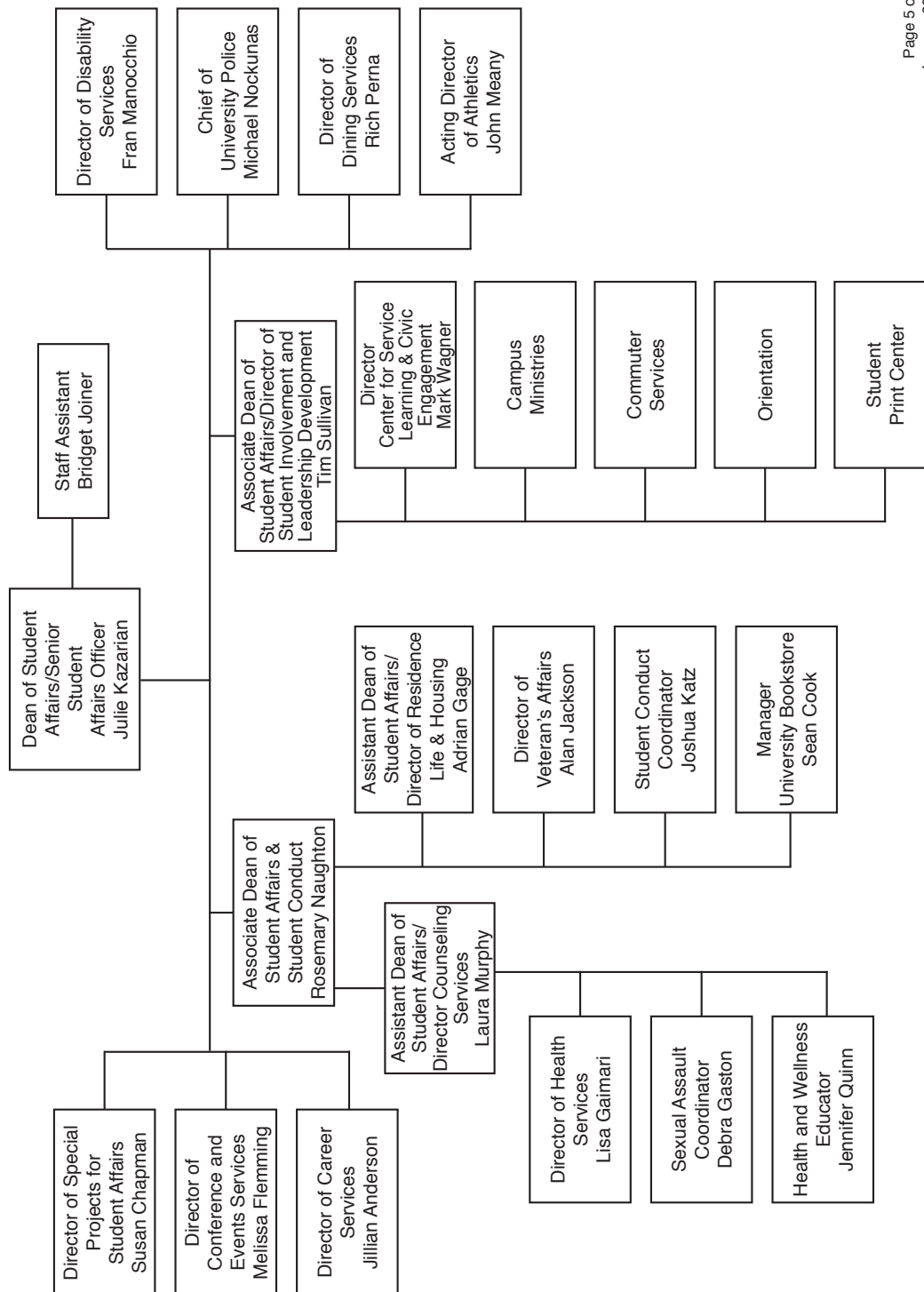
## Division of University Advancement



Page 4 of 5  
January 2014  
(ID)

\*Reflective of WSU organization as of January 2014

# Division of Student Affairs



Page 5 of 5  
January 2014  
(ID)

\*Reflective of WSU organization as of January 2014





## General Information

### Worcester State University Fall 2013 Snapshot

#### STUDENT PROFILE

##### *Fall 2013 Total Enrollment:*

Undergraduate Full-Time	4,115
Undergraduate Part-Time	1,441
Graduate Full-Time	153
Graduate Part-Time	738
Total Headcount	6,447

##### *Undergraduate Degree-Seeking Student Characteristics:*

Women (Undergraduate)	60%
Men (Undergraduate)	40%
Out of State	2.9%
International (23 Countries)	1.3%
Minority <sup>1</sup> Students	20.2%
Residential Students <sup>2</sup>	29%
Average Age	22.9
First-time Freshmen Average HSGPA	3.18
First-time Freshmen Average SAT Score	1,024
First-time Freshmen Retention (Fall 2012, 1st year)	80%
Graduation (2007, 6th year)	49%

##### *First-time Freshmen Admissions:*

Applied	4,149
Accepted	2,514
Accepted & Enrolled	780

##### *Transfer Admissions:*

Applied	1,438
Accepted	921
Accepted & Enrolled	606

#### FINANCES

##### *Cost of Attendance:*

Undergraduate Tuition	\$ 970
Undergraduate Fees	\$ 7,187
Room and Board (Average)	\$ 10,877

##### *Revenues (2012-2013):*

State Appropriation	\$26,483,839
Tuition and Fees-Net	\$32,963,982
Other Sources	\$18,739,060
Total Revenues	\$78,186,881

##### *Student Financial Aid (2012-2013):*

Students Receiving FAID	4,002
Average Size of Award	\$ 9,544
Students on WSU Scholarships	1,350

##### *Market Value of Funds under Management (FY 2013):*

	\$18,241,889
<i>Endowment (FY 2013):</i>	\$11,247,409

#### FACULTY-STAFF PROFILE

##### *Faculty: (from IPEDS Data)*

Full-Time (includes Librarians)	206
Part-Time Faculty (Adjuncts only)	204
Full-Time Faculty with PhD/T Degree	161
Student to Faculty Ratio <sup>3</sup>	18 : 1

##### *Staff: (Full-time)*

Association of Professional Adm.	116
AFSCME	155
Non Unit Professionals	43

#### ACADEMICS

##### *Academic Programs:*

Undergraduate Majors	25
Undergraduate Minors	29
Graduate Programs	25
Study Abroad Opportunities	73

##### *Largest Undergraduate Major (1st Major only):*

Business Administration	781
Criminal Justice	458
Psychology	443
Biology	342
Undeclared	295

##### *Average Undergraduate Class Size:*

	16
--	----

##### *Degrees Conferred (2012-2013):*

Baccalaureate's	923
Post Bachelor's Certificates	174
Master's	190
Certificate of Advanced Graduate Study	5
Total Degrees Conferred	1,292

#### STUDENT LIFE

##### *Organizations, Clubs & Honor Societies:*

Student Organizations and Clubs	40
Academic Honor Societies	17

##### *Intercollegiate Sports:*

Men	9
Women	10

#### ALUMNI<sup>4</sup>

<i>Total Alumni</i>	35,598
Alumni Living in MA	23,205
Alumni in Worcester County	18,097
Alumni in the City of Worcester	5,116

<sup>1</sup> Minority includes Black/African American, American Indian/Alaskan Native, Hispanic/Latino, Asian, Native Hawaiian or other Pacific Islander, and Two or More Races.

<sup>2</sup> Based only on Full-time, Degree-Seeking, Undergraduate Students

<sup>3</sup> FTE Students Taught/FTE Faculty

<sup>4</sup> Includes both Undergraduate and Graduate Degree Recipients.

Updated: 12/23/2013

## Brief History of WSU

Worcester State University was founded as the Worcester Normal School in 1874, the fifth state-funded normal school in Massachusetts and one of dozens of teacher-training schools established during the 19th century.

In 1932, all of the state's normal schools were re-christened "teachers colleges" and the old Normal School became Worcester State Teachers College. That same year, the University moved to its present location on Chandler Street.

The large, colonial-style building now known as the Administration Building was constructed on the site of Willow Farm, owned by Worcester inventor and philanthropist George I. Rockwood. In 1942, Rockwood donated an additional thirty-five acres, paving the way for campus expansion.

The University's fifth president, Dr. Eugene A. Sullivan (1947-1970), presided over a period of unprecedented growth. From 1947 to 1970, enrollment grew from 150 students (all pursuing education degrees) to nearly 2,800 students pursuing a variety of degrees. In 1952, the University introduced its first graduate degree, a master of science in education. Campus expansion included construction of the Gymnasium and Classroom Building in 1958, the Science Building in 1965 (rechristened the Dr. Eugene A. Sullivan Building in 1980), and the Learning Resource Center in 1970. Dr. Sullivan also laid the groundwork for construction of Chandler Village, the first student residence hall on campus.

By 1963, the former teachers college had evolved into a liberal arts and sciences college, a transition acknowledged by the Board of Education in 1963 when it voted to change the school's name to Worcester State College.

In 1974, the curriculum was expanded to include a B.S. in business administration and a B.S. in nursing, the first Bachelor of Science program for registered nurses in New England and the first to be accredited by the National League of Nurses.

That same year, the University established The Graduate School, which offered several new master's degree programs. During the 1980s, the University expanded its programs to include the area's first Master of Science in Speech-Language Pathology and the first bachelor's degree in Occupational Therapy in the state college system.

During the presidency of Dr. Kalyan K. Ghosh (1992-2002), the University incorporated the widespread use of technology, from computer-based learning to a campus-wide network. In 2000, the University opened the 110,000-square-foot Kalyan K. Ghosh Center for Science and Technology, with instructional laboratory facilities for twelve academic programs and a 196-seat multimedia lecture hall. Dr. Ghosh was also instrumental in the founding of the Worcester State Foundation.

In 2002, the University welcomed its first female president, Dr. Janelle C. Ashley. Under her leadership the campus undertook major renovation and building projects, which included construction of Wasylean Hall, an award-winning 348-bed residence hall that opened its doors in 2004, and the expansion of Dowden Hall, which increased the number of beds for resident students to 1,200.

In 2010, the Massachusetts Legislature voted to grant university status to Massachusetts state colleges, recognition of the fact that the schools qualified as universities according to the classification of institutions of higher education established by the Carnegie Foundation for the Advancement of Teaching. The old Worcester Normal School had officially evolved into Worcester State University.

Barry M. Maloney, the 11th president of Worcester State University, assumed the helm July 1, 2011. Under his leadership, WSU has increased its full-time faculty, student enrollment and fundraising; launched new academic programs; and expanded its student engagement, community-based learning, student exchange and study away opportunities.

Construction of two new student-centered facilities - the 400-bed Sheehan Residence Hall and a 100,000-square-foot wellness facility - are scheduled to open in 2014 and 2016, respectively.

Source: President's Office

## **Prologue**

From its founding in 1874, Worcester State University has been dedicated to educational programs that lead to self-enrichment and to careers in the professions, government, business, and industry.

As a public, state operated university governed by a local Board of Trustees under the direction of the Massachusetts Department of Higher Education, Worcester State University is empowered to award baccalaureate and master's degrees in education and in the arts and sciences. While continuing its tradition of serving the residents of the Commonwealth, Worcester State University has earned a reputation for quality teaching by dedicated faculty in classes of moderate size, and for programs responsive to its students' and society's changing needs.

## **Mission**

Worcester State University, a public metropolitan institution of higher learning located in a culturally vibrant region of the Commonwealth, affirms the principles of liberal learning as the foundation for all advanced programs of study.

Worcester State University offers programs in the traditional liberal arts and sciences disciplines, while maintaining its historical focus on teacher education. It has expanded its offerings with professional degree programs in biomedical sciences, business, and the health professions. Through its curricula, Worcester State addresses the intellectual and career needs of the increasingly diverse citizenry of central Massachusetts.

Worcester State University is dedicated to offering high quality, affordable undergraduate and graduate academic programs and to promoting lifelong intellectual growth, global awareness, and career opportunities of its students. To this end, Worcester State University values teaching excellence rooted in scholarship and community service; cooperates with the business, social, and cultural resources of Worcester County; collaborates with other institutions of higher learning in the region; and develops new programs responsive to emerging community needs.

## Institutional Goals 2012-2014

**Goal #1:** *Actively promote student centered academic environments that provide rigorous learning opportunities and scholarship.*

**Goal #2:** *Promote an inclusive decision making process that is driven by qualitative and quantitative data while maintaining a student centered focus.*

**Goal #3:** *Prepare students for life and careers in a diverse and rapidly changing world.*

**Goal #4:** *Foster an environment of open communication, collaboration, inclusion, and respect.*

**Goal #5:** *Foster an ethos of sustainability that informs all aspects of the university community.*

**Goal #6:** *Cultivate and enhance local, regional, and global connections to strengthen WSU's impact on the world.*



For more information, please check out our website  
<http://www.worcester.edu/StrategicPlanning/Shared%20Documents/2010-2014%20Goals.aspx>

## Accreditation

Worcester State University is accredited by the New England Association of Schools and Colleges, Inc., a non-governmental, nationally recognized organization whose affiliated institutions include elementary schools through collegiate institutions offering postgraduate instruction.

Accreditation of an institution by the New England Association indicates that it meets or exceeds criteria for the assessment of institutional quality periodically applied through a peer group review process. An accredited school or college is one which has available the necessary resources to achieve its stated purposes through appropriate educational programs, is substantially doing so, and gives reasonable evidence that it will continue to do so in the foreseeable future. Institutional integrity is also addressed through accreditation.

The following programs are also accredited by their respective professional organizations:

- Nursing: Commission on Collegiate Nursing Education (CCNE)
- Speech-Language Pathology: The American Speech-Language-Hearing Association
- Occupational Therapy: Accreditation Council for Occupational Therapy Education
- Nuclear Medicine Technology: The Joint Review Committee on Educational Programs in Nuclear Medicine Technology.
- School Psychology: National Association of School Psychologists

Worcester State University has been named “Best in the Northeast”, by the Princeton Review for the tenth year in a row. It is the only Massachusetts state university with this designation. The Princeton Review has also named WSU as one of the nation’s “75 Best Value” public colleges for 2013 and 2014 as well as a “Most Environmentally Responsible College” according the Princeton Review’s Guide to 832 Green Colleges.



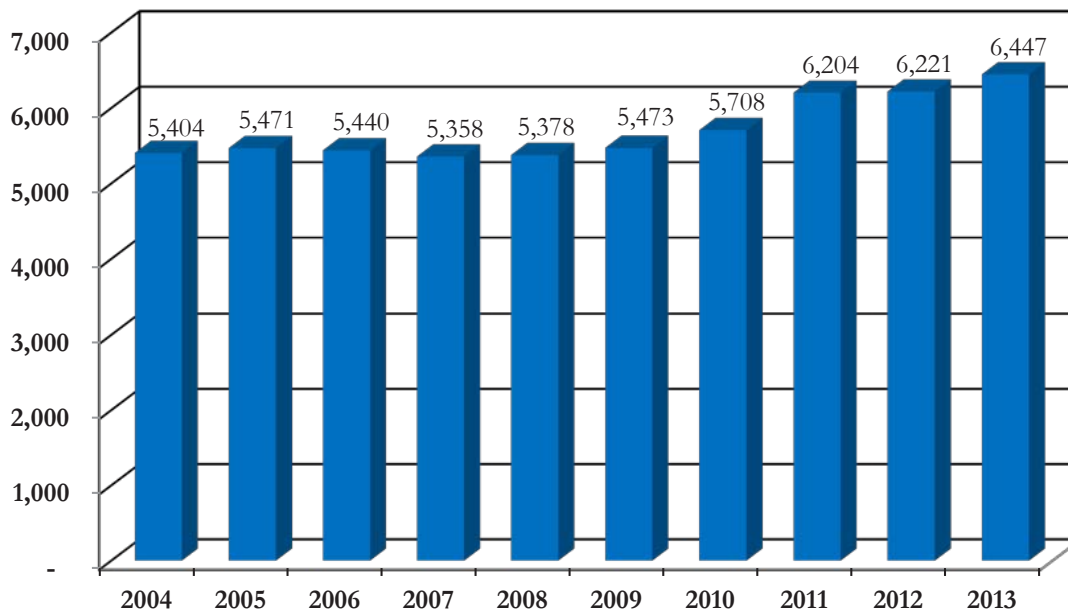
Worcester State University was recognized in the top tier of the 2013 “Best Regional Universities” of the U.S. News and World Report College Rankings. WSU was also recognized for having the highest alumni giving rate in the state university system.

Worcester State University has been named “Best College” by Worcester Magazine for the eighth time. The university also received this honor in 2002, 2006, 2007, 2009, 2010, 2011 and 2012.



## Student Profile

### Longitudinal Enrollment, Fall 2004-Fall 2013



Source: IR Official DHE Fall Files

## Students by Country of Residence, Fall 2013

<i>Country</i>	<i>Undergraduate</i>	<i>Graduate</i>	<i>Total</i>
Albania	5	0	5
Brazil	5	1	6
Canada	3	0	3
China	9	2	11
Congo, Republic of	1	0	1
Cuba	0	1	1
Dominican Republic	1	0	1
Ecuador	3	1	4
Ghana	6	0	6
Greece	1	0	1
Guatemala	1	0	1
India	1	2	3
Iran	1	0	1
Israel	2	0	2
Italy	2	0	2
Ivory Coast	3	0	3
Kenya	4	3	7
Korea, Democratic People's Republic of	1	0	1
Korea, Republic of	1	1	2
Nepal	3	0	3
Philippines	1	0	1
Russia	0	1	1
Senegal	1	0	1
Sweden	1	0	1
Syria	3	0	3
United Kingdom	0	1	1
United States of America	5,485	878	6,363
Vietnam	10	0	10
Zimbabwe	2	0	2
<b>Total</b>	<b>5,556</b>	<b>891</b>	<b>6,447</b>

Source: IR Official DHE Fall Files

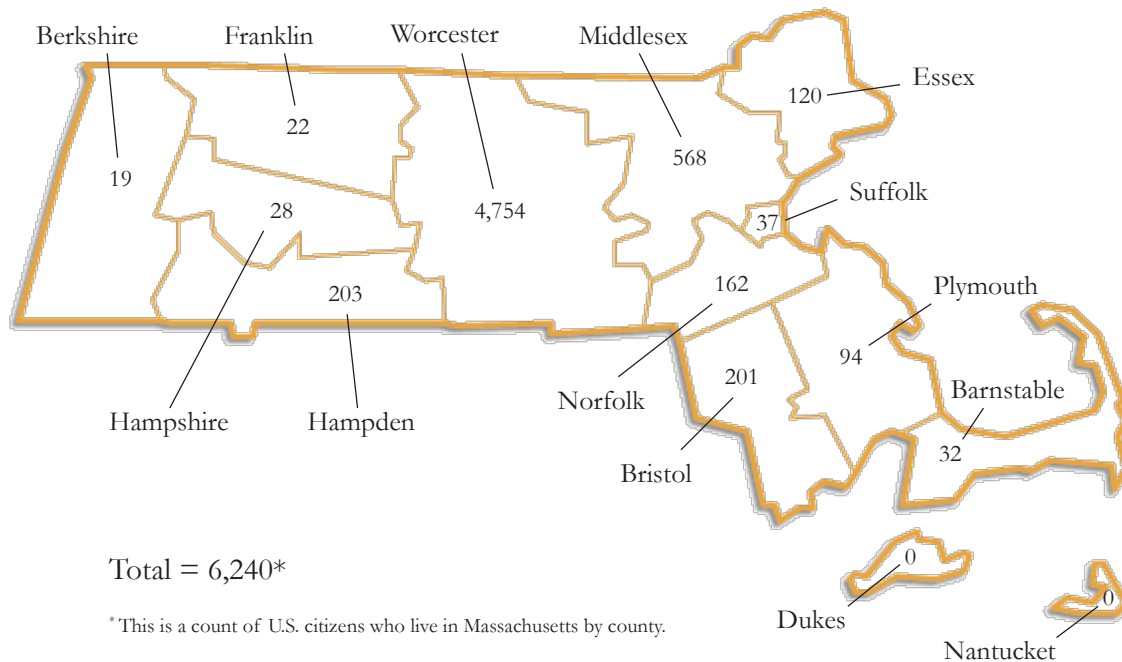


## Students by State of Residence, Fall 2013

State	Undergraduate			Graduate			Total
	Male	Female	Total	Male	Female	Total	
Alaska	1	1	2	0	0	0	2
Arizona	2	0	2	0	0	0	2
California	4	0	4	1	0	1	5
Colorado	2	1	3	0	0	0	3
Connecticut	25	49	74	1	9	10	84
Florida	1	0	1	0	0	0	1
Illinois	2	1	3	0	0	0	3
Kentucky	1	0	1	0	0	0	1
Maine	0	2	2	0	0	0	2
<b>Massachusetts</b>	<b>2,128</b>	<b>3,185</b>	<b>5,313</b>	<b>209</b>	<b>638</b>	<b>847</b>	<b>6,160</b>
Michigan	2	0	2	0	0	0	2
Minnesota	1	0	1	0	0	0	1
North Carolina	1	0	1	0	0	0	1
New Hampshire	6	8	14	0	7	7	21
New Jersey	2	1	3	0	0	0	3
New Mexico	0	1	1	0	0	0	1
New York	4	2	6	0	1	1	7
Ohio	1	0	1	0	0	0	1
Oklahoma	1	0	1	0	0	0	1
Pennsylvania	1	2	3	0	0	0	3
Puerto Rico	0	1	1	0	0	0	1
Rhode Island	11	24	35	2	9	11	46
Texas	1	0	1	0	0	0	1
Unknown	1	4	5	0	1	1	6
Vermont	1	2	3	0	0	0	3
Virginia	0	1	1	0	0	0	1
Washington	1	0	1	0	0	0	1
Non-US Citizen	34	37	71	5	8	13	84
<b>Total</b>	<b>2,234</b>	<b>3,322</b>	<b>5,556</b>	<b>218</b>	<b>673</b>	<b>891</b>	<b>6,447</b>

Source: IR Official DHE Fall Files

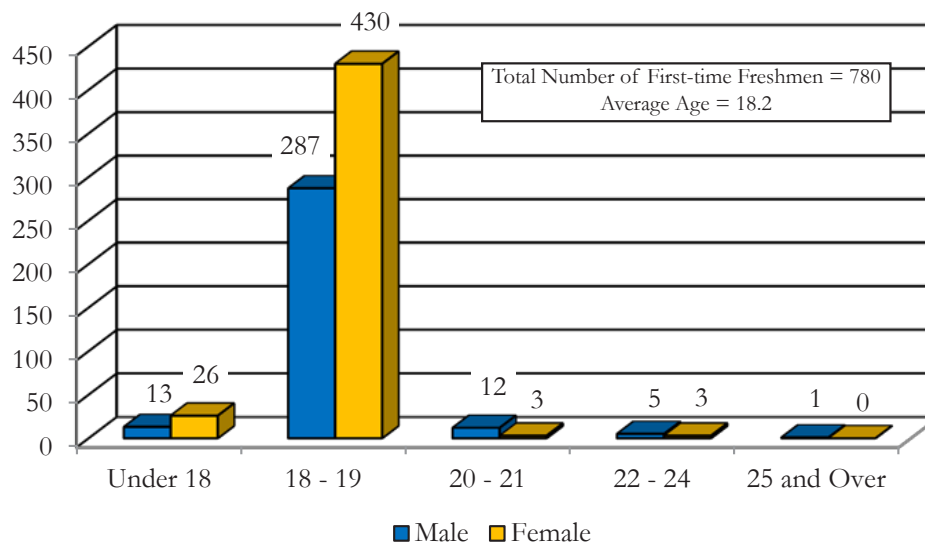
## Students by Massachusetts County of Residence, Fall 2013



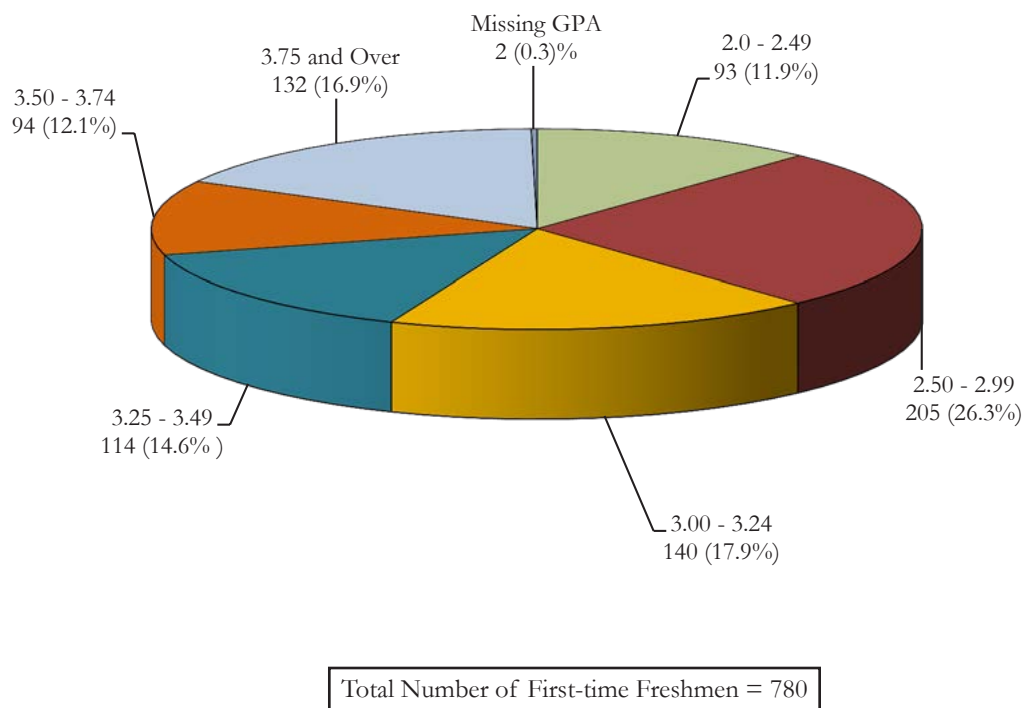
<i>County</i>	<i>Undergraduate</i>	<i>Graduate</i>	<i>Total</i>
Barnstable	27	5	32
Berkshire	17	2	19
Bristol	190	11	201
Duke	0	0	0
Essex	112	8	120
Franklin	18	4	22
Hampden	188	15	203
Hampshire	21	7	28
Middlesex	506	62	568
Nantucket	0	0	0
Norfolk	138	24	162
Plymouth	84	10	94
Suffolk	32	5	37
Worcester	4,047	707	4,754
<b>Total</b>	<b>5,380</b>	<b>860</b>	<b>6,240</b>

Source: IR Official DHE Fall Files

## Age of Degree-seeking, First-time Freshmen, Fall 2013



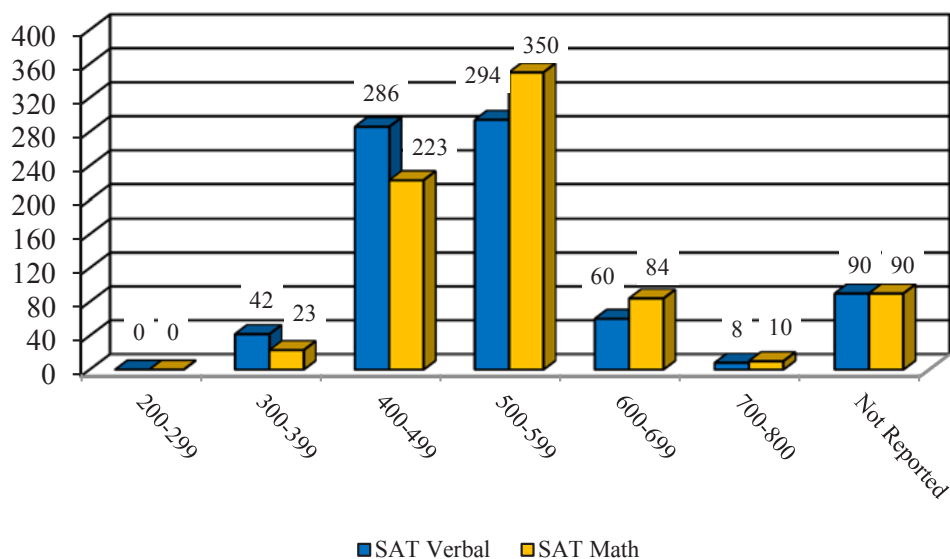
## High School GPA of Degree-seeking, First-time Freshmen, Fall 2013



Source: IR Official DHE Fall Files

## SAT Scores of Degree-seeking, First-time Freshmen, Fall 2013

<i>Score Range</i>	<u>SAT Verbal</u>			<u>SAT Math</u>		
	<i>Male</i>	<i>Female</i>	<i>Total</i>	<i>Male</i>	<i>Female</i>	<i>Total</i>
200-299	0	0	0	0	0	0
300-399	24	18	42	7	16	23
400-499	116	170	286	75	148	223
500-599	109	185	294	152	198	350
600-699	25	35	60	40	44	84
700-800	5	3	8	5	5	10
Not Reported	39	51	90	39	51	90
<b>Total</b>	<b>318</b>	<b>462</b>	<b>780</b>	<b>318</b>	<b>462</b>	<b>780</b>



## Average Combined SAT Scores, Fall 2013

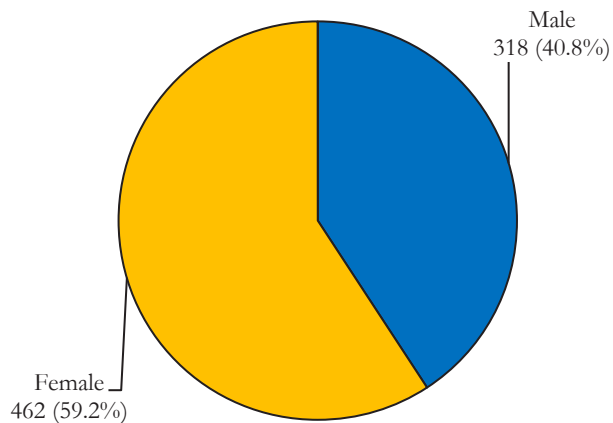
Male 1029.5

Female 1018.9

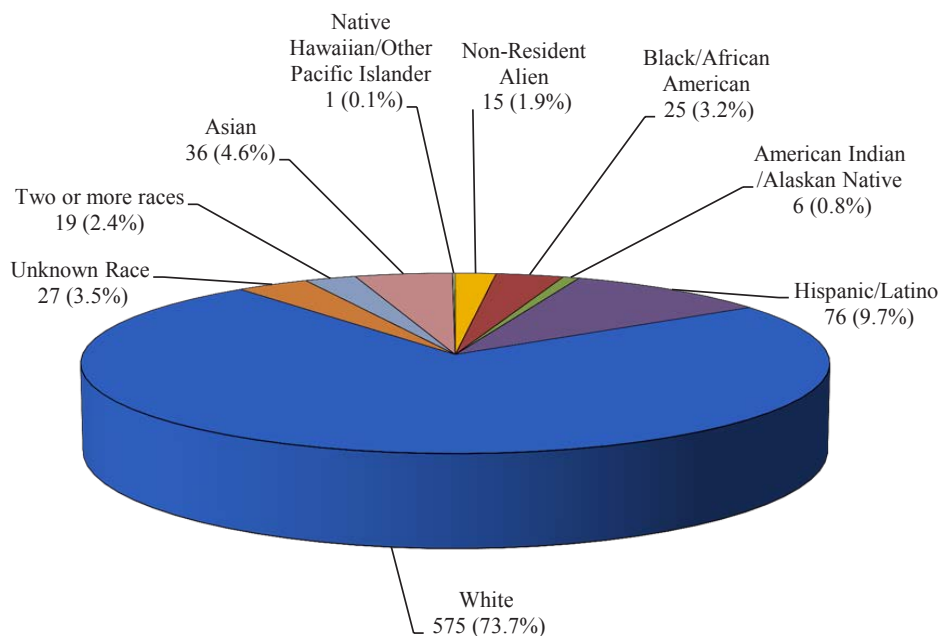
Total 1023.8

Source: IR Official DHE Fall Files

## Gender and Ethnicity of Degree-seeking, First-time Freshmen, Fall 2013



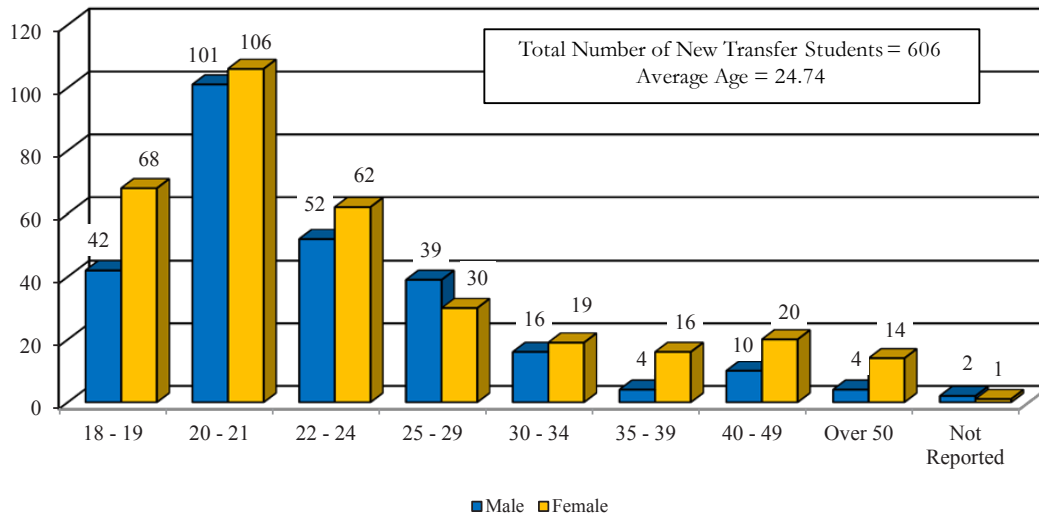
Total Number of First-time Freshmen = 780



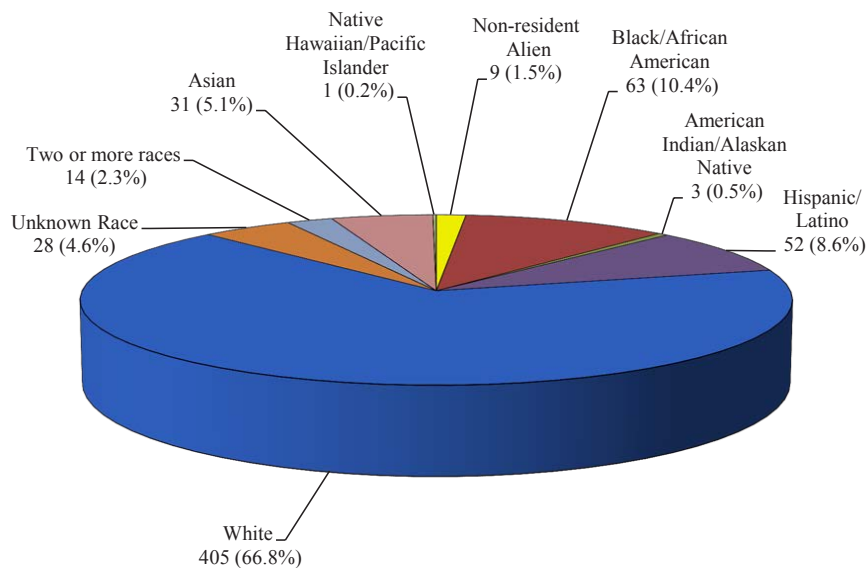
Total Number of First-time Freshmen = 780

Source: IR Official DHE Fall Files

## Age of New Degree-seeking, Transfer Students, Fall 2013



## Ethnicity of New Degree-seeking, Transfer Students, Fall 2013



Source: IR Official DHE Fall Files

## Transfer Institutions, Fall 2013

<i>Institution*</i>	<i># of Students</i>
Quinsigamond Community College	210
Mount Wachusett Community College	22
University of Massachusetts at Amherst	20
Foreign College/University	17
Westfield State University	15
Anna Maria College	14
Becker College	12
Bridgewater State University	11
Fitchburg State University	10
Massachusetts Bay Community College	9
Salem State University	9
University of Massachusetts at Dartmouth	9
Holyoke Community College	8
<b>Total</b>	<b>366</b>

\* Institutions contributing approximately 60% of the transfer students

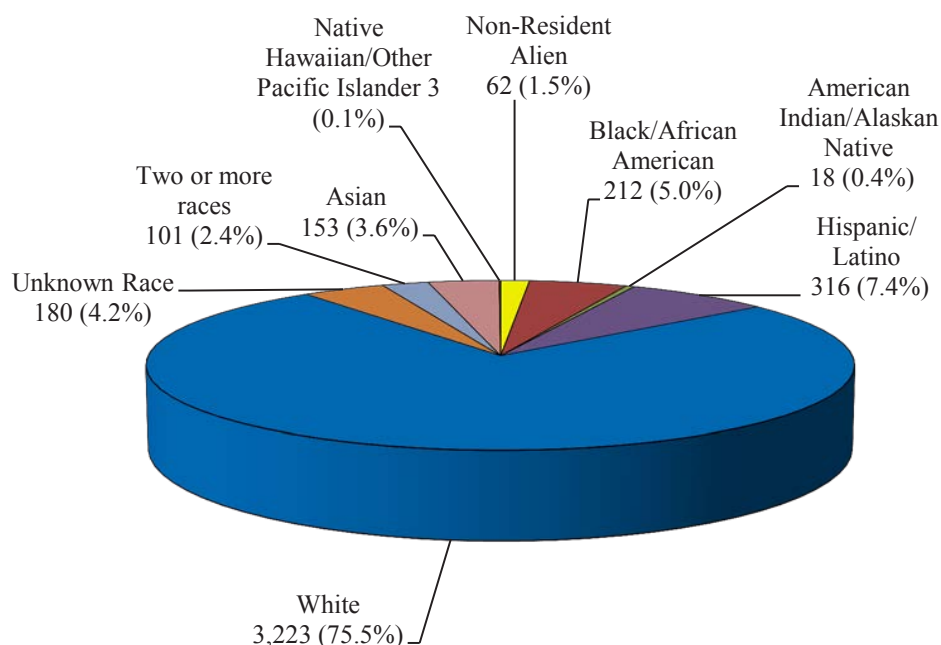
## Majors of New Degree-seeking, Transfer Students, Fall 2013

<i>Major</i>	<i>Male</i>	<i>Female</i>	<i>Total</i>
Biology	16	32	48
Biotechnology	3	7	10
Business Administration	65	42	107
Chemistry	14	8	22
Communication	10	9	19
Communication Science & Disorders	1	19	20
Computer Science	18	3	21
Criminal Justice	47	27	74
Early Childhood Education	1	8	9
Early Childhood Education (Non-Licensure)	0	3	3
Economics	2	0	2
Elementary Education	2	17	19
English	8	12	20
Geography	1	0	1
Health Education	9	6	15
History	11	6	17
Mathematics	6	4	10
Natural Science	5	3	8
Nursing (For RNs)	1	33	34
Nursing (Generic)	1	13	14
Occupational Studies	0	3	3
Psychology	15	35	50
Public Health	7	12	19
Sociology	5	3	8
Spanish	0	0	0
Urban Studies	3	7	10
Undeclared	16	18	34
Visual & Performing Arts	3	6	9
<b>Total</b>	<b>270</b>	<b>336</b>	<b>606</b>

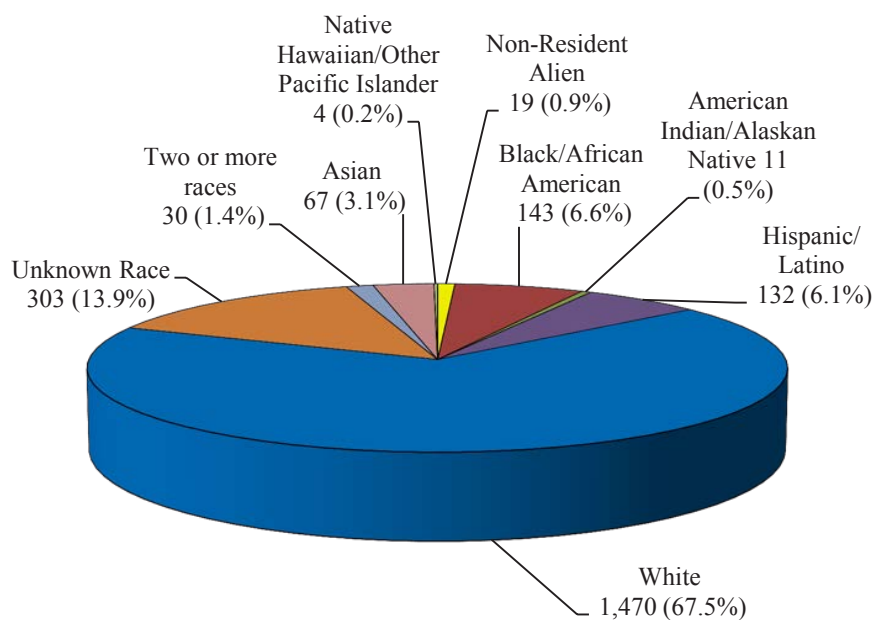
Source: IR Official DHE Fall Files



## Ethnicity of Full-time Students, Fall 2013

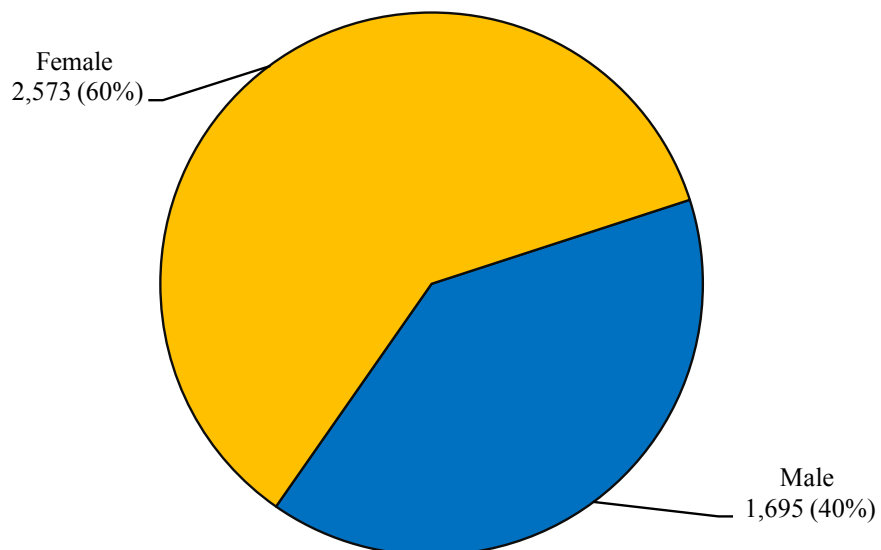


## Ethnicity of Part-time Students, Fall 2013

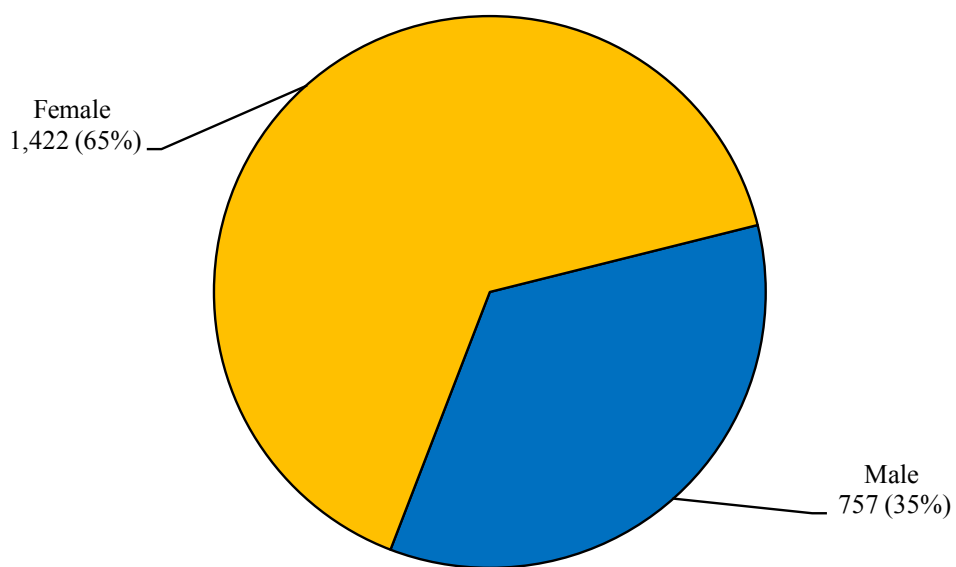


Source: IR Official DHE Fall Files

### Gender of Full-time Students, Fall 2013

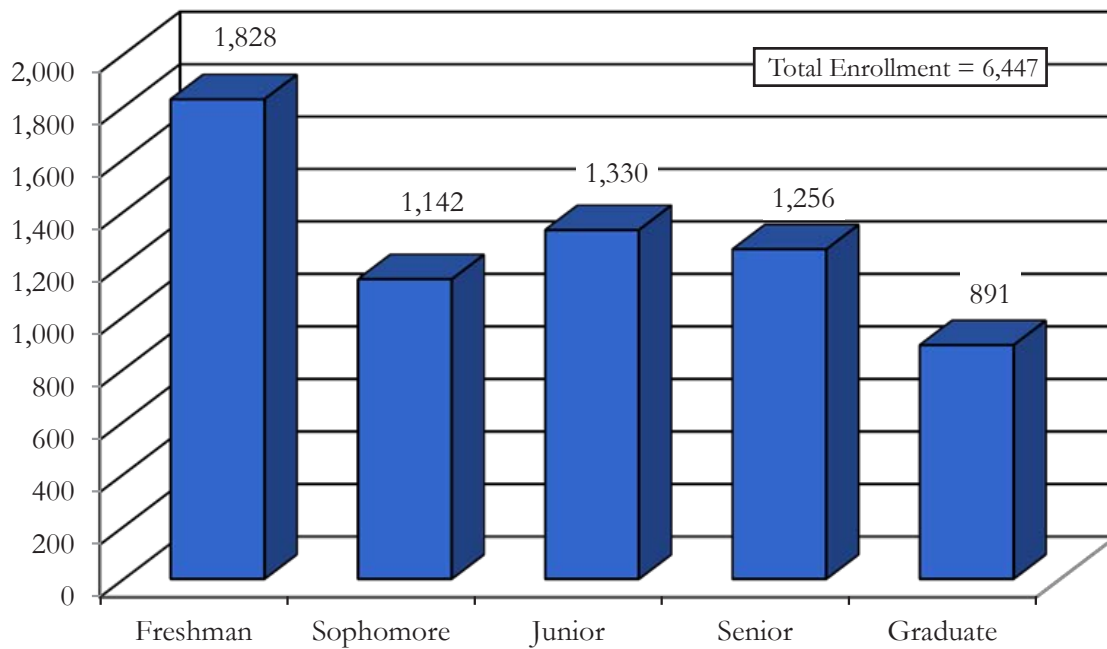


### Gender of Part-time Students, Fall 2013



Source: IR Official DHE Fall Files

## Total Enrollment by Student Classification, Fall 2013



Source: IR Official DHE Fall Files

## On-Campus Housing by State of Residence and Class, Fall 2013

<i>Class</i>	<i>Residence</i>	<i>Total</i>
Freshman	Alaska	1
	California	1
	Colorado	2
	Connecticut	11
	Illinois	2
	Massachusetts	565
	Michigan	1
	Minnesota	1
	New Hampshire	2
	New Jersey	1
	Ohio	1
	Pennsylvania	2
	Rhode Island	10
	Virginia	1
	Non-Resident Alien	6
<b>Total</b>		<b>607</b>
Sophomore	Connecticut	12
	Florida	1
	Illinois	1
	Kentucky	1
	Massachusetts	286
	New Hampshire	2
	New York	2
	Rhode Island	1
	Non-Resident Alien	2
<b>Total</b>		<b>308</b>
Junior	Connecticut	5
	Massachusetts	174
	New Jersey	2
	New York	1
	Oklahoma	1
	Rhode Island	6
	Vermont	1
<b>Total</b>		<b>190</b>
Senior	Connecticut	1
	Maine	1
	Massachusetts	96
	Rhode Island	1
	Non-Resident Alien	1
<b>Total</b>		<b>100</b>
<b>Grand Total</b>		<b>1,205</b>

Source: IR Official DHE Fall Files

## Instructional Programs

### Undergraduate Enrollment by First and Second Major and Gender, Fall 2013 (1 of 4)

<i>First Major</i>	<i>Second Major</i>	<i>Gender</i>		<i>Total</i>
		<i>Male</i>	<i>Female</i>	
Biology	Chemistry	1		1
	Criminal Justice		1	1
	English		1	1
	Psychology		3	3
	Sociology	1	1	2
	Spanish		1	1
	None	112	221	333
	<b>Total</b>	<b>114</b>	<b>228</b>	<b>342</b>
Biotechnology	Economics		1	1
	Spanish		1	1
	None	46	46	92
	<b>Total</b>	<b>46</b>	<b>48</b>	<b>94</b>
Business Administration	Biology		1	1
	Criminal Justice	1		1
	Economics	4	1	5
	Mathematics		1	1
	Natural Science		1	1
	Psychology		1	1
	Spanish	1	1	2
	None	458	311	769
	<b>Total</b>	<b>464</b>	<b>317</b>	<b>781</b>
Chemistry	Biology	1		1
	Business Administration	1		1
	Elementary Education		1	1
	Mathematics		1	1
	None	63	62	125
	<b>Total</b>	<b>65</b>	<b>64</b>	<b>129</b>
Communication	English	2	1	3
	Geography		1	1
	Psychology	1		1
	Visual & Performing Arts	1		1
	None	142	105	247
	<b>Total</b>	<b>146</b>	<b>107</b>	<b>253</b>
Communication Sciences & Disorders	Natural Science		1	1
	Psychology		2	2
	Spanish		2	2
	None	8	216	224
	<b>Total</b>	<b>8</b>	<b>221</b>	<b>229</b>
Computer Science	Business Administration	1		1
	Spanish	1		1
	None	117	15	132
	<b>Total</b>	<b>119</b>	<b>15</b>	<b>134</b>

Source: IR Official DHE Fall Files

## Undergraduate Enrollment by First and Second Major and Gender, Fall 2013 (2 of 4)

<i>First Major</i>	<i>Second Major</i>	<i>Gender</i>		<i>Total</i>
		<i>Male</i>	<i>Female</i>	
Criminal Justice	Business Administration	4		4
	Psychology	2	6	8
	Sociology	1		1
	Spanish	1		1
	Urban Studies	1	1	2
	None	303	139	442
	<b>Total</b>	<b>312</b>	<b>146</b>	<b>458</b>
Early Childhood Education	Economics	1		1
	English		4	4
	History		1	1
	Psychology	1	41	42
	Sociology		6	6
	Spanish		5	5
	None	3	41	44
	<b>Total</b>	<b>5</b>	<b>98</b>	<b>103</b>
Early Childhood Education, Non-Licensure	Early Childhood Education		1	1
	Psychology		3	3
	Sociology		1	1
	Visual & Performing Arts		1	1
	None		26	26
	<b>Total</b>		<b>32</b>	<b>32</b>
Economics	Business Administration	1		1
	None	23	7	30
	<b>Total</b>	<b>24</b>	<b>7</b>	<b>31</b>
Elementary Education	Business Administration		1	1
	English	2	19	21
	Geography		2	2
	Health Education	2		2
	History	4	10	14
	Mathematics		5	5
	Natural Science		2	2
	Psychology	2	62	64
	Sociology	1	12	13
	Spanish	1	6	7
	None	8	55	63
	<b>Total</b>	<b>20</b>	<b>174</b>	<b>194</b>
English	Biology		1	1
	Communication		1	1
	Psychology		3	3
	Sociology		1	1
	Spanish		1	1
	None	48	93	141
	<b>Total</b>	<b>48</b>	<b>100</b>	<b>148</b>

Source: IR Official DHE Fall Files

## Undergraduate Enrollment by First and Second Major and Gender, Fall 2013 (3 of 4)

<i>First Major</i>	<i>Second Major</i>	<i>Gender</i>		<i>Total</i>
		<i>Male</i>	<i>Female</i>	
Geography	Communication	1		1
	None	14	8	22
	<b>Total</b>	<b>15</b>	<b>8</b>	<b>23</b>
Health Education	None	54	72	126
	<b>Total</b>	<b>54</b>	<b>72</b>	<b>126</b>
History	Economics		1	1
	English		1	1
	Geography	2		2
	Urban Studies		1	1
	None	129	53	182
	<b>Total</b>	<b>131</b>	<b>56</b>	<b>187</b>
Mathematics	Business Administration	1		1
	Chemistry	1		1
	Natural Science		1	1
	Sociology	1		1
	None	47	32	79
	<b>Total</b>	<b>50</b>	<b>33</b>	<b>83</b>
Natural Science	None	24	30	54
	<b>Total</b>	<b>24</b>	<b>30</b>	<b>54</b>
Nursing (For RNs)	None	4	73	77
	<b>Total</b>	<b>4</b>	<b>73</b>	<b>77</b>
Nursing (Generic)	Psychology		1	1
	None	25	247	272
	<b>Total</b>	<b>25</b>	<b>248</b>	<b>273</b>
Occupational Studies	Psychology	1	3	4
	None	7	107	114
	<b>Total</b>	<b>8</b>	<b>110</b>	<b>118</b>
Psychology	Business Administration		2	2
	Communication		1	1
	Criminal Justice	2	2	4
	Early Childhood Education		1	1
	Elementary Education	1	2	3
	Health Education		1	1
	History		1	1
	Mathematics		1	1
	Sociology		2	2
	Spanish	2	2	4
	None	87	336	423
	<b>Total</b>	<b>92</b>	<b>351</b>	<b>443</b>

Source: IR Official DHE Fall Files

## Undergraduate Enrollment by First and Second Major and Gender, Fall 2013 (4 of 4)

<i>First Major</i>	<i>Second Major</i>	<i>Gender</i>		<i>Total</i>
		<i>Male</i>	<i>Female</i>	
Public Health	Spanish		2	2
	None	41	122	163
	<b>Total</b>	<b>41</b>	<b>124</b>	<b>165</b>
Sociology	Business Administration	1		1
	Communication		1	1
	Health Education	1	1	2
	Psychology		1	1
	Spanish		2	2
	Urban Studies		1	1
	None	21	43	64
	<b>Total</b>	<b>23</b>	<b>49</b>	<b>72</b>
Spanish	Communication		1	1
	Communication Sciences & Disorders		1	1
	Elementary Education		1	1
	Psychology	1	1	2
	Sociology	1		1
	None	5	25	30
	<b>Total</b>	<b>7</b>	<b>29</b>	<b>36</b>
Urban Studies	Business Administration		1	1
	Criminal Justice		1	1
	None	21	40	61
	<b>Total</b>	<b>21</b>	<b>42</b>	<b>63</b>
Visual and Performing Arts	Psychology	1		1
	Spanish		1	1
	None	22	44	66
	<b>Total</b>	<b>23</b>	<b>45</b>	<b>68</b>
Undeclared	None	143	152	295
	<b>Total</b>	<b>143</b>	<b>152</b>	<b>295</b>
Undeclared-Education	English	1	4	5
	History		1	1
	Mathematics		1	1
	Psychology		9	9
	Sociology		1	1
	None	1	14	15
	<b>Total</b>	<b>2</b>	<b>30</b>	<b>32</b>
Non-Degree Seeking	None	200	313	513
	<b>Total</b>	<b>200</b>	<b>313</b>	<b>513</b>
<b>Grand Total</b>		<b>2,234</b>	<b>3,322</b>	<b>5,556</b>

Source: IR Official DHE Fall Files



## Graduate Enrollment by Major and Gender, Fall 2013

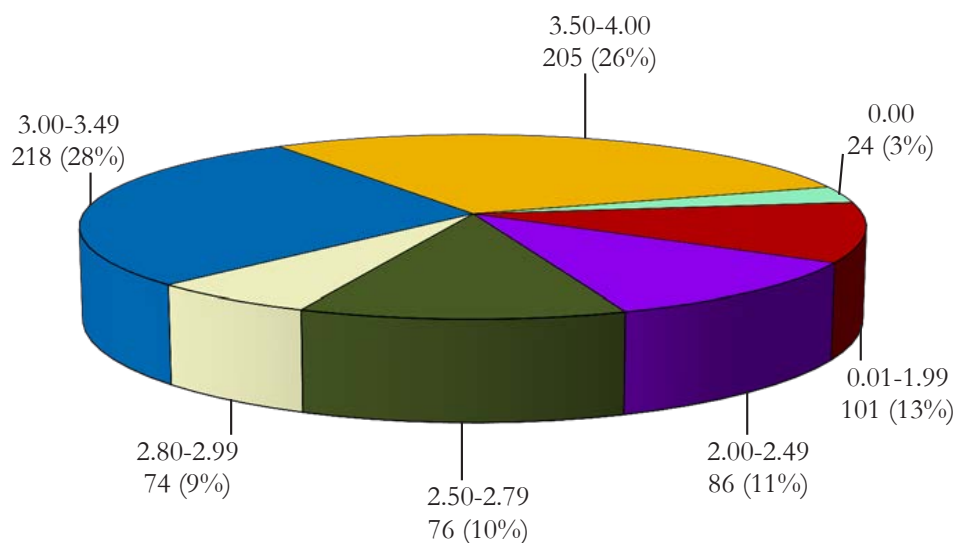
<b>Major</b>	<b>Gender</b>		<b>Total</b>
	<b>Male</b>	<b>Female</b>	
Biotechnology	11	12	23
Early Childhood Education		17	17
Education	2	9	11
<i>(Concentration)</i>			
Education	1	3	4
Health Education	1	6	7
Elementary Education		25	25
English	7	8	15
English as a Second Language	1	6	7
Health Care Administration	2	15	17
History	14	11	25
Management	16	19	35
Middle School Education	9	22	31
Moderate Special Needs	7	18	25
Non-Degree Seeking	80	190	270
Non-Profit Management	5	14	19
Nursing	7	52	59
<i>(Concentration)</i>			
Community & Public Health Nursing	6	31	37
Nurse Educator	1	21	22
Occupational Therapy	5	54	59
Reading		14	14
School Leadership & Administration	22	29	51
School Psychology	1	24	25
Secondary Education	27	35	62
Spanish	1	16	17
Speech-Language Pathology	1	83	84
<b>Grand Total</b>	<b>218</b>	<b>673</b>	<b>891</b>

Source: IR Official DHE Fall Files



## Academic Achievement/Learning Outcomes

### Grade Distribution of First-time, Full-time, Degree-seeking Freshmen, Fall 2013



Total Number of Freshmen = 780

Source: IR Official DHE Fall Files

## First-time, Full-time Freshmen Retention and Graduation Rates

First-time, Full-time Freshman Retention and Graduation Rates  
Fall 2005 - Fall 2012 Freshmen Cohorts

Entering Class	Initial Cohort	After 1st Year		After 2nd Year		After 3rd Year		After 4th Year		After 5th Year		After 6th Year		After 7th Year		After 8th Year	
		N	%	N	%	N	%	N	%	N	%	N	%	N	%	N	%
2005	641																
Continued		473	73.9 <sup>1</sup>	377	59.0 <sup>2</sup>	346	54.1	161	25.2	52	8.1	22	3.4	14	2.2	8	1.3
Dropout (cumulative)			26.1		41.0		45.2		46.3		48.9		49.7		48.2		48.4
Graduated (cumulative)						4	0.6	182	28.5	275	43.0	300	46.9	317	49.6	322	50.4
2006	668																
Continued		508	76.0	430	64.4	388	58.1	151	22.6 <sup>3</sup>	58	8.7	25	3.7	15	2.2		
Dropout (cumulative)			24.0		35.6		41.0		44.9		44.8		45.3		45.0		
Graduated (cumulative)						6	0.9	217	32.5	310	46.5	340	51.0	352	52.8		
2007	678																
Continued		513	75.7	441	65.0	396	58.4	150	22.1	68	10.0	38	5.6				
Dropout (cumulative)			24.3		35.0		40.9		43.7		45.3		45.6		45.0		
Graduated (cumulative)						5	0.7	232	34.2	303	44.7	331	48.8				
2008	654																
Continued		501	76.6	425	65.0	389	59.6 <sup>4</sup>	158	24.2	53	8.1						
Dropout (cumulative)			23.4		35.0		39.8		44.6		45.3						
Graduated (cumulative)						4	0.6	204	31.2	304	46.6						
2009	693																
Continued		521	75.2	458	66.1	410	59.2	192	27.7								
Dropout (cumulative)			24.8		33.9		40.3		39.8								
Graduated (cumulative)						4	0.6	225	32.5								
2010	809																
Continued		644	79.8 <sup>5</sup>	543	67.3	510	63.2										
Dropout (cumulative)			20.2		32.7		36.1										
Graduated (cumulative)						6	0.7										
2011	790																
Continued		617	78.1	529	67.0												
Dropout (cumulative)			21.9		33.0												
Graduated (cumulative)																	
2012	781																
Continued		627	80.3														
Dropout (cumulative)			19.7														
Graduated (cumulative)																	

Adjusted cohorts due to deceased students: <sup>1</sup>640, <sup>2</sup>639, <sup>3</sup>667, <sup>4</sup>653, <sup>5</sup>807

Source: WSU Colleague Data System

## Degrees Conferred by CIP Code Category, FY 2013

<i>CIP Code Category</i>	<i>Bachelor</i>	<i>Post-Bacc. Certificate</i>	<i>Master</i>	<i>Post-Masters Certificate</i>
Adult Health Nurse/Nursing	26			
Biology Teacher Education		4		
Biology/Biological Sciences, General	54			
Biotechnology	21		12	
Business Administration and Management, General	159		6	
Chemistry Teacher Education		1		
Chemistry, General	27			
Clinical Nurse Specialist			6	
Communication Sciences and Disorders, General	38			
Community Health Services/Liaison/Counseling	22		8	
Computer and Information Sciences, General	19			
Criminal Justice/Safety Studies	87			
Early Childhood Education and Teaching	20		7	
Economics, General	9			
Education, General		36	6	
Educational Leadership and Administration, General			22	
Elementary Education and Teaching	21	22	7	
Elementary and Middle School Administration/Principalship				
English Language and Literature, General	39		5	
English Language and Literature/Letters, Other			2	
English/Language Arts Teacher Education		19		
Foreign Language Teacher Education		4		
Geography	12			
Health Professions and Related Clinical Sciences, Other	36			
Health Services/Allied Health/Health Sciences, General		4		
Health/Health Care Administration/Management			9	
History Teacher Education		4		
History, General	50		11	
Junior High/Intermediate/Middle School Education & Teaching			1	
Kindergarten/Preschool Education and Teaching		11		
Mass Communication/Media Studies	20			
Mathematics Teacher Education		14		
Mathematics, General	7			
Non-Profit/Public/Organizational Management			12	
Nursing- Registered Nurse Training (RN, ASN, BSN, MSN)	40			
Occupational Therapy/Therapist	10		24	
Physical Sciences	12			
Psychology, General	106			
Reading Teacher Education		2	1	
School Psychology			5	5
Science Teacher Education/General Science Teacher Education		2		
Secondary Education and Teaching			6	
Social Studies Teacher Education		7		
Sociology	26			
Spanish Language And Literature	5		8	
Special Education and Teaching, Other		31		
Speech Communication and Rhetoric	38			
Speech-Language Pathology/Pathologist			32	
Teacher Education, Multiple Levels		13		
Urban Studies/Affairs	13			
Visual and Performing Arts	6			
<b>Total</b>	<b>923</b>	<b>174</b>	<b>190</b>	<b>5</b>

Source: IR Official DHE Degrees Conferred Files



## Personnel Profile

### Total Employees/Staff, Fall 2013

SOC Category	Total									Male	Female
	Nonresident Alien	Hispanic	American Indian/ Alaska Native	Asian	Black	Native Hawaiian/ Pacific Islander	White	Two or more races	Unknown		
Business & Financial Operations Occupations	0	1	0	0	0	0	11	0	0	7	5
Community, Social Service, Legal, Arts, Design, Entertainment, Sports & Media Occupations	0	0	0	1	1	0	4	0	0	3	3
Computer, Engineering & Science Occupations	0	2	0	2	0	0	19	0	0	16	7
Healthcare Practitioners & Technical Occupations	0	0	0	0	0	0	4	0	0	2	2
Librarians	0	0	0	0	0	0	3	0	0	1	2
Library Technicians	0	0	0	0	0	0	1	0	0	0	1
Management Occupations	0	4	0	3	5	0	97	0	0	32	77
Natural Resources, Construction & Maintenance Occupations	0	0	0	0	0	0	12	0	0	12	0
Office & Administrative Support Occupations	0	5	0	2	4	0	94	0	0	12	93
Production, Transportation & Materials, Moving Occupations	0	0	0	0	0	0	2	0	0	2	0
Service Occupations	0	8	0	0	4	0	46	0	4	53	9
<b>Total</b>	<b>0</b>	<b>20</b>	<b>0</b>	<b>8</b>	<b>14</b>	<b>0</b>	<b>293</b>	<b>0</b>	<b>4</b>	<b>140</b>	<b>199</b>

Source: IR Official DHE HR Files

## Full-time Employees/Staff, Fall 2013

SOC Category	Full-Time									Male	Female
	Nonresident Alien	Hispanic	American Indian/ Alaska Native	Asian	Black	Native Hawaiian/ Pacific Islander	White	Two or more races	Unknown		
Business & Financial Operations Occupations	0	1	0	0	0	0	11	0	0	7	5
Community, Social Service, Legal, Arts, Design, Entertainment, Sports & Media Occupations	0	0	0	1	1	0	3	0	0	3	2
Computer, Engineering & Science Occupations	0	2	0	1	0	0	19	0	0	15	7
Healthcare Practitioners & Technical Occupations	0	0	0	0	0	0	4	0	0	2	2
Librarians	0	0	0	0	0	0	3	0	0	1	2
Library Technicians	0	0	0	0	0	0	1	0	0	0	1
Management Occupations	0	4	0	3	5	0	93	0	0	31	74
Natural Resources, Construction & Maintenance Occupations	0	0	0	0	0	0	12	0	0	12	0
Office & Administrative Support Occupations	0	5	0	2	4	0	85	0	0	12	84
Production, Transportation & Materials, Moving Occupations	0	0	0	0	0	0	2	0	0	2	0
Service Occupations	0	8	0	0	4	0	46	0	4	53	9
<b>Total</b>	<b>0</b>	<b>20</b>	<b>0</b>	<b>7</b>	<b>14</b>	<b>0</b>	<b>279</b>	<b>0</b>	<b>4</b>	<b>138</b>	<b>186</b>

Source: IR Official DHE HR Files



## Part-time Employees/Staff, Fall 2013

SOC Category	Part-Time									Male	Female
	Nonresident Alien	Hispanic	American Indian/ Alaska Native	Asian	Black	Native Hawaiian/ Pacific Islander	White	Two or more races	Unknown		
Business & Financial Operations Occupations	0	0	0	0	0	0	0	0	0	0	0
Community, Social Service, Legal, Arts, Design, Entertainment, Sports & Media Occupations	0	0	0	0	0	0	1	0	0	0	1
Computer, Engineering & Science Occupations	0	0	0	1	0	0	0	0	0	1	0
Healthcare Practitioners & Technical Occupations	0	0	0	0	0	0	0	0	0	0	0
Librarians	0	0	0	0	0	0	0	0	0	0	0
Library Technicians	0	0	0	0	0	0	0	0	0	0	0
Management Occupations	0	0	0	0	0	0	4	0	0	1	3
Natural Resources, Construction & Maintenance Occupations	0	0	0	0	0	0	0	0	0	0	0
Office & Administrative Support Occupations	0	0	0	0	0	0	9	0	0	0	9
Production, Transportation & Materials, Moving Occupations	0	0	0	0	0	0	0	0	0	0	0
Service Occupations	0	0	0	0	0	0	0	0	0	0	0
<b>Total</b>	<b>0</b>	<b>0</b>	<b>0</b>	<b>1</b>	<b>0</b>	<b>0</b>	<b>14</b>	<b>0</b>	<b>0</b>	<b>2</b>	<b>13</b>

## Faculty by Institution of Highest Degree, Fall 2013

<i>Awarding Institution</i>	<i>Graduates</i>	<i>Awarding Institution</i>	<i>Graduates</i>
University of Massachusetts-Amherst	18	Georgetown University	1
Boston University	15	Kent State University	1
University of Connecticut	12	Mass College of Liberal Arts	1
Clark University	7	McGill University	1
University of California	7	Massachusetts Institute of Technology	1
Worcester State College	7	Moscow University	1
Brandeis University	5	Nichols College	1
Assumption College	4	North Carolina State University	1
Boston College	4	Northwestern University	1
Harvard University	4	Ohio State University	1
Nova College	4	Purdue University	1
University of Rhode Island	4	Rhode Island School of Design	1
Indiana University	3	Rice University	1
Rutgers University	3	Rivier College	1
University of Michigan	3	Rochester University-University College	1
University of Minnesota-Minneapolis	3	Southern Illinois University	1
University of New Hampshire	3	State University New York-Stony Brook	1
Colorado State University	2	Suffolk University	1
Indiana University-Pennsylvania	2	Texas A&M University	1
Michigan State University	2	Thomas Jefferson University	1
Northeastern University	2	Union College	1
State University New York-Albany	2	University of Alabama	1
State University New York-Buffalo	2	University of Arizona	1
Temple University	2	University of Cincinnati	1
University of Colorado	2	University of Illinois	1
University of Georgia	2	University of Iowa	1
University of Maryland	2	University of Maryland	1
University of Massachusetts-Boston	2	University of Miami	1
University of Massachusetts-Lowell	2	University of Minnesota	1
University of Virginia	2	University of Mississippi	1
Vanderbilt University	2	University of Nebraska	1
Worcester Polytechnic Institute	2	University of North Carolina	1
American International College	1	University of Notre Dame	1
American University	1	University of Oklahoma	1
Anna Maria College	1	University of Oregon	1
Arizona State University	1	University of Pennsylvania	1
Brown University	1	University of Pretoria	1
California School of Professional Psychology	1	University of South Carolina	1
Carnegie-Mellon University	1	University of Texas-Austin	1
City University of New York	1	University of Vermont	1
Clark Atlanta University	1	University of Washington	1
College of William and Mary	1	University of Waterloo	1
Columbia University-Columbia College	1	University of Wisconsin	1
Columbia University-School of General Studies	1	Virginia Polytechnic Institute	1
Cornell University	1	Washington State University	1
Eastman School of Music	1	Wesleyan University	1
Fitchburg State University	1	Worcester State University	1
Florida International University	1	Yale University	1
Florida State University	1		
		<b>Total</b>	<b>201</b>

Source: IR Official DHE HR Files

## Full-time Faculty by Department and Rank, Fall 2013

<i>Department</i>	<i>Professor</i>	<i>Associate Professor</i>	<i>Assistant Professor</i>	<i>Instructor</i>	<i>Total</i>
Biology	7	3	3	0	<b>13</b>
Business and Economics	11	2	7	0	<b>20</b>
Chemistry	2	2	5	0	<b>9</b>
Communication	5	2	2	0	<b>9</b>
Communication Sciences & Disorders	1	3	2	0	<b>6</b>
Computer Science	3	1	0	0	<b>4</b>
Criminal Justice	0	3	4	0	<b>7</b>
Education	6	2	6	0	<b>14</b>
English	5	5	2	0	<b>12</b>
Health Sciences	0	3	3	0	<b>6</b>
History & Political Science	1	8	5	0	<b>14</b>
Mathematics	1	4	3	2	<b>10</b>
Nursing	2	1	2	9	<b>14</b>
Occupational Therapy	3	0	2	1	<b>6</b>
Philosophy	4	0	0	1	<b>5</b>
Physical & Earth Sciences	1	7	2	0	<b>10</b>
Psychology	6	5	5	0	<b>16</b>
Sociology	0	2	4	0	<b>6</b>
Urban Studies	2	1	2	0	<b>5</b>
Visual & Performing Arts	6	3	1	0	<b>10</b>
World Languages	3	0	2	0	<b>5</b>
<b>Total</b>	<b>69</b>	<b>57</b>	<b>62</b>	<b>13</b>	<b>201</b>

Source: IR Official DHE HR Files

**Full-time Faculty by Rank and Gender, Fall 2013**

<i>Rank</i>	<i>Male</i>	<i>Female</i>	<i>Total</i>
Professor	26	43	69
Associate Professor	33	24	57
Assistant Professor	21	41	62
Instructor	1	12	13
<b>Total</b>	<b>81</b>	<b>120</b>	<b>201</b>

**Full-time Faculty by Ethnicity and Gender, Fall 2013**

<i>Ethnicity</i>	<i>Male</i>	<i>Female</i>	<i>Total</i>
Non-Resident Alien	0	0	0
Hispanic	7	4	11
American Indian/Alaskan Native	0	0	0
Asian	7	13	20
Black	5	4	9
Native Hawaiian/Pacific Islander	0	0	0
White	62	98	160
Two or more races	0	0	0
Race/ethnicity unknown	0	1	1
<b>Total</b>	<b>81</b>	<b>120</b>	<b>201</b>

**Full-time Faculty by Tenure Status and Gender, Fall 2013**

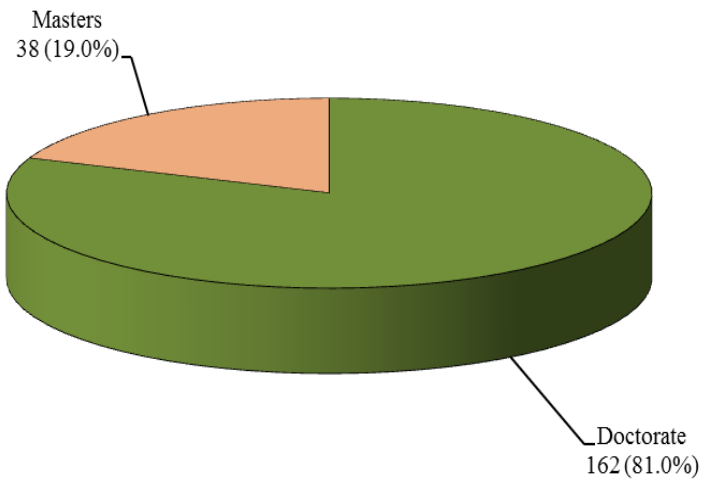
<i>Tenure Status</i>	<i>Male</i>	<i>Female</i>	<i>Total</i>
Tenured	60	71	131
On tenure track	18	35	53
Not on tenure track	3	14	17
<b>Total</b>	<b>81</b>	<b>120</b>	<b>201</b>

**Full-time Faculty by Age Range and Rank, Fall 2013**

<i>Age Range</i>	<i>Professor</i>	<i>Associate Professor</i>	<i>Assistant Professor</i>	<i>Instructor</i>	<i>Total</i>
30 - 39	0	7	28	2	37
40 - 49	13	16	22	2	53
50 - 59	22	11	7	6	46
60 - 69	24	12	5	3	44
70 and over	10	11	0	0	21
<b>Total</b>	<b>69</b>	<b>57</b>	<b>62</b>	<b>13</b>	<b>201</b>

Source: IR Official IPEDS HR Files

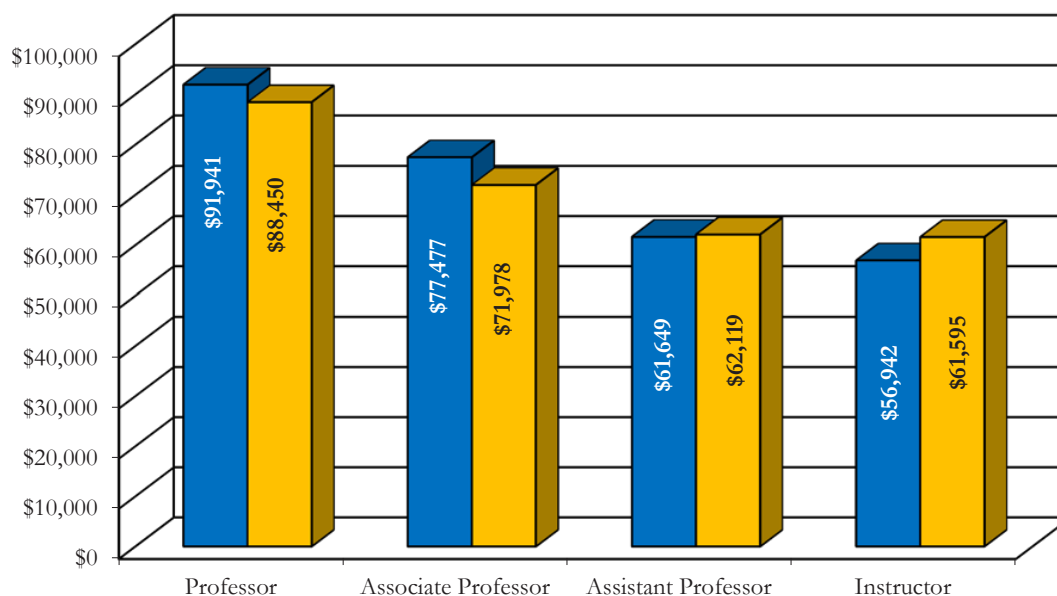
## Full-time Faculty by Highest Degree Earned, Fall 2013



Source: IR Official IPEDS HR Files

## Average Salaries of Full-time Faculty by Rank and Gender, Fall 2013

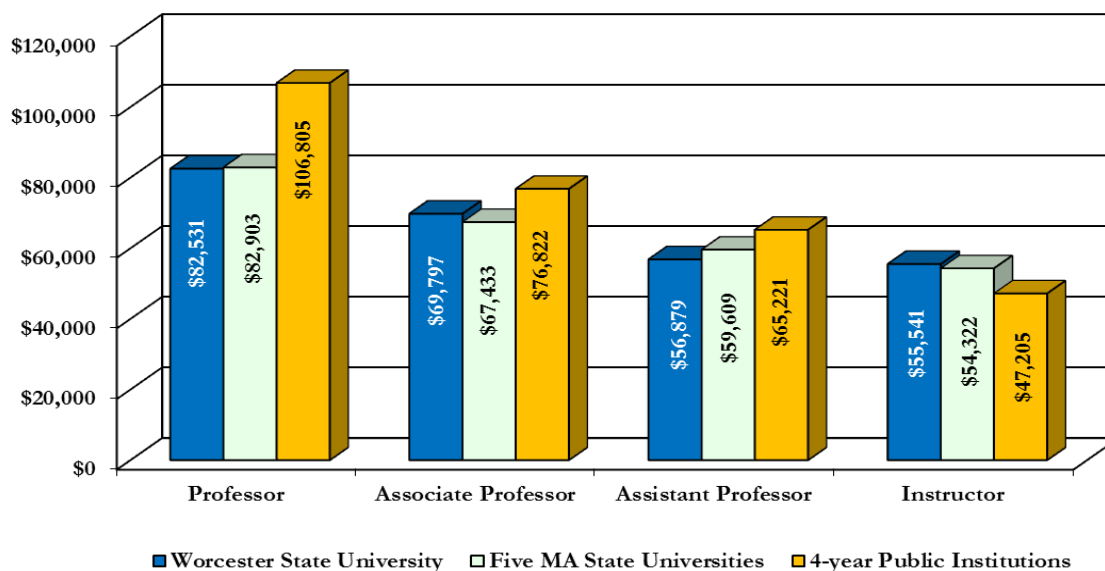
<i>Rank</i>	<i>Male</i>	<i>Female</i>	<i>Total</i>
Professor	\$91,941	\$88,450	\$89,765
Associate Professor	\$77,477	\$71,978	\$75,162
Assistant Professor	\$61,649	\$62,119	\$61,960
Instructor	\$56,942	\$61,595	\$61,237



Source: IR Official IPEDS HR Files

## Average Faculty Salaries Comparison, AY 2011-2012\*

Rank	Worcester State University	Five MA State Universities	National 4-year Public Institutions
Professor	\$82,531	\$82,903	\$106,805
Associate Professor	\$69,797	\$67,433	\$76,822
Assistant Professor	\$56,879	\$59,609	\$65,221
Instructor	\$55,541	\$54,322	\$47,205



\*Five MA State Universities used for comparison are as follows: Bridgewater State University, Fitchburg State University, Framingham State University, Salem State University, Westfield State University

Source: IR Official IPEDS Salary Files & IPEDS NCES ([www.nces.ed.gov](http://www.nces.ed.gov))





## Library Information

### Library Holdings, FY 2012-FY 2013

<i>Category</i>	<i>FY 2012</i>	<i>FY 2013</i>
Total Print Volumes	204,971	205,424
Electronic On-line Journal Titles	42,326	48,912
Electronic On-line Newspaper Titles	1,227	1,227
Electronic On-line Periodical Subscriptions	186	186
Electronic On-line Books	13,225	90,847
Electronic On-line Research Databases	91	115
Paper Periodical Subscriptions	310	310
Microfilm Titles	588	588
Current Microform Subscriptions	6	4
Media (DVDs, CD-ROM and Videos) Titles	4,267	4,282
<b>Total Library Holdings</b>	<b>267,197</b>	<b>351,895</b>

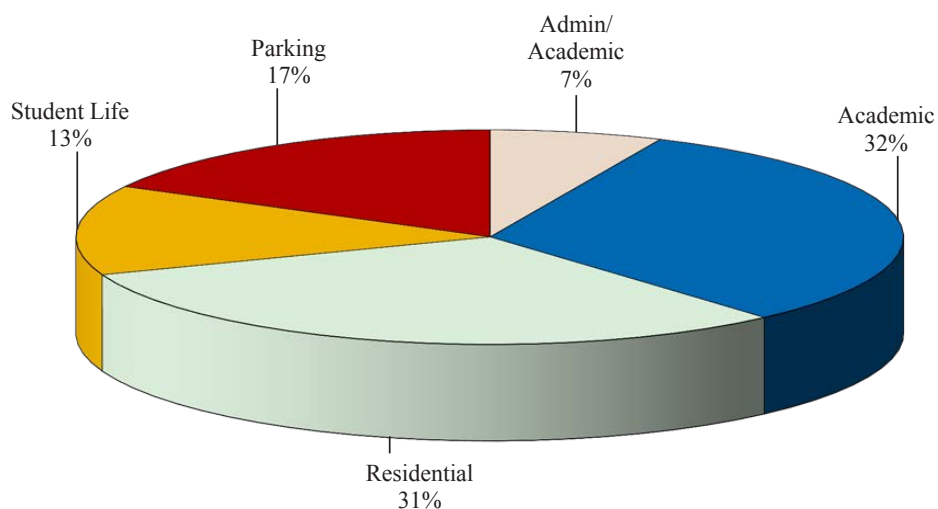
Source: NCES Library Reports



## Facilities Information

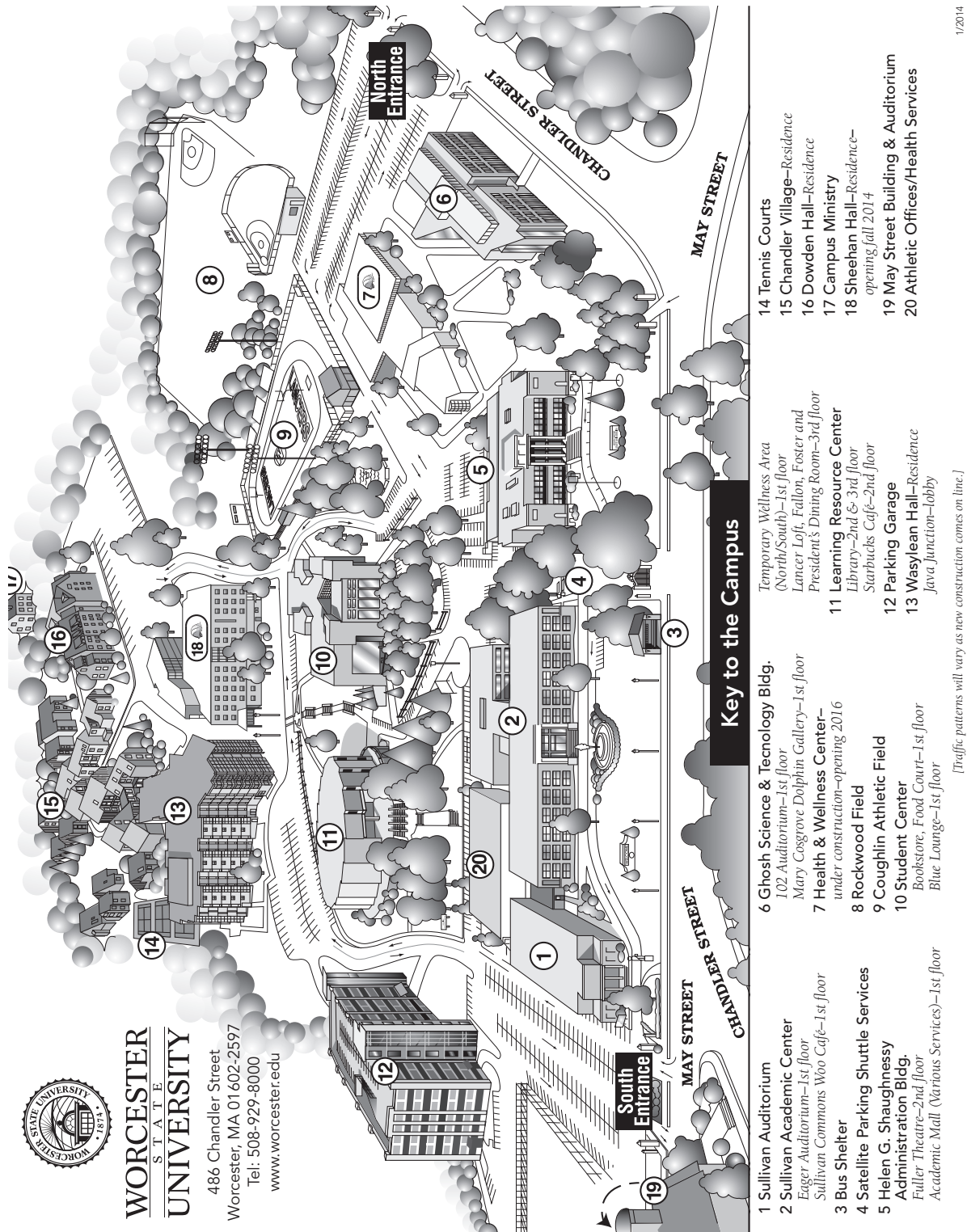
### Physical Plant Facilities, Fall 2013

<i>Building Name</i>	<i>Primary Use</i>	<i>Gross sq. ft.</i>	<i>Assignable sq. ft.</i>	<i>Year</i>
1. Administration	Administrative	67,066	37,695	1932
2. Learning Resource Center	Library, Classrooms	113,335	72,815	1968
3. Sullivan Academic Center	Academic	110,690	72,725	1965
4. Science Tech Center	Academic	97,300	71,072	2000
5. Student Center	Student Affairs, Dining	71,416	46,430	1978
6. Gymnasium	Athletics, Art	65,676	41,155	1958
7. 17 Candlewood Street	Campus Ministry	1,200	960	1927
8. Chandler Village	Housing	103,560	79,490	1973
9. Dowden Hall	Housing	98,555	56,910	1990
10. Wasylean Hall	Housing	109,000	70,510	2004
11. Parking Garage	Parking	174,032	166,592	2007



Source: Office of Facilities

## Campus Map



1/2014

Source: Printing & Publications

## University Advancement

### Foundation Board of Directors 2013-2014

Mary C. Ritter, *President*  
 Craig A. Bovaird '77, *Vice President*  
 Jill C. Dagilis '78, *Vice President*  
 Edward L. Sherr, *Treasurer*  
 Robin J. Quill, '97, *Assistant Treasurer*  
 Gregg H. Rosen '86, *Immediate Past President*  
 Thomas M. McNamara '94, *Clerk*  
 George H. Albro '65, M.Ed. '68  
 Mary K. Alexander, Ed.D.  
 David E. Bedard '74  
 Keith E. Blanchette '98, CPA  
 Jean M. Borgatti, Ph.D.  
 Derek S. Brindisi '99  
 John P. Brissette '88  
 Matthew Cote  
 Leslie K. Cutler  
 Julia Dvorko, Ph.D.  
 Mary Burke Fallon  
 James D. Glickman  
 Lillian R. Goodman, Ed.D.  
 Maryanne H. Hammond '69, M.Ed. '72  
 Kimberly M. Harmon, R.N. '95  
 Kristina M. Jackson '93, Ex Officio  
 Charlotte Z. Klein '75  
 Barry M. Maloney  
 Dorothy J. Manning, M.Ed. '88  
 Daniel J. Mastrototaro  
 Rosanne Sullivan Matulaitis '65  
 Kerri Aleksiewicz Melley  
 Satya B. Mitra, Ph.D.  
 Janet Wilson Moore  
 Robert J. Morton  
 Suzanne Singh Nebelung, M.Ed. '00  
 Alan O. Osmolowski, '91, CPA  
 Marc Pisa, Parent Representative  
 Cameron Pramas '14  
 R. David Richer  
 Terence J. Shanley, Ex Officio  
 Robert J. Spain '78  
 George W. Tetler III  
 Richard E. Thomas  
 Ronald B. Valerio '75, Ex Officio  
 Steven J. Ward '76  
 Randal D. Webber '91

### Alumni Association's Advisory Board 2013-2014

Kristina M. Jackson '93, *President*  
 Hugh F. Donohue '70, *Vice President*  
 Danielle M. Horn '03, *Secretary*  
 John J. Brown III '02, *Executive Committee*  
 Margaret C. Farrey '54, M.Ed. '78, *Executive Committee*

### Directors 2013-2014

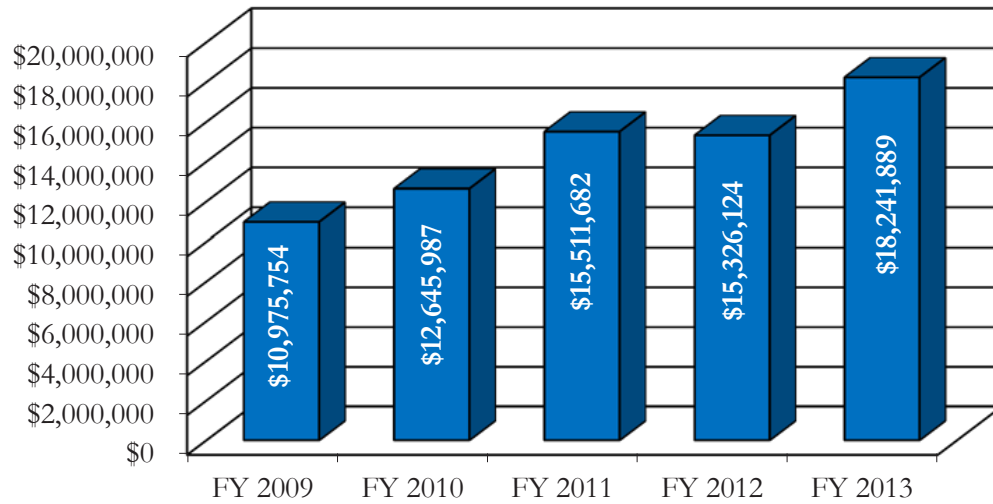
John A. Ahern '80  
 Michael J. Borowiec '10  
 Camilla H. Caffrey  
 Joseph C. Deeley '56, M.Ed. '58, Colonel,  
     United States Air Force, Retired  
 Joshua L. Katz '06  
 Cathleen M. Liberty '08  
 Vincent J. Matulaitis '66  
 Michael J. Mills '72  
 Deirdre A. Olson O'Connor '71  
 Patricia A. Pennucci '62, M.Ed. '67  
 Kathryn M. Portle '69  
 Amanda M. Riik '02  
 Elaine G. Tateronis '63, M.Ed. '74, Ed.D.  
 Jacqueline M. Trotta '69, M.Ed. '74  
 Nicole E. Valentine '96

Maryanne M. Hammond '69, M.Ed. '72,  
*Alumni Representative to the Board of Trustees*

Marion S. Calabro '14, *SGA President/Student Representative*

Source: Office of University Advancement

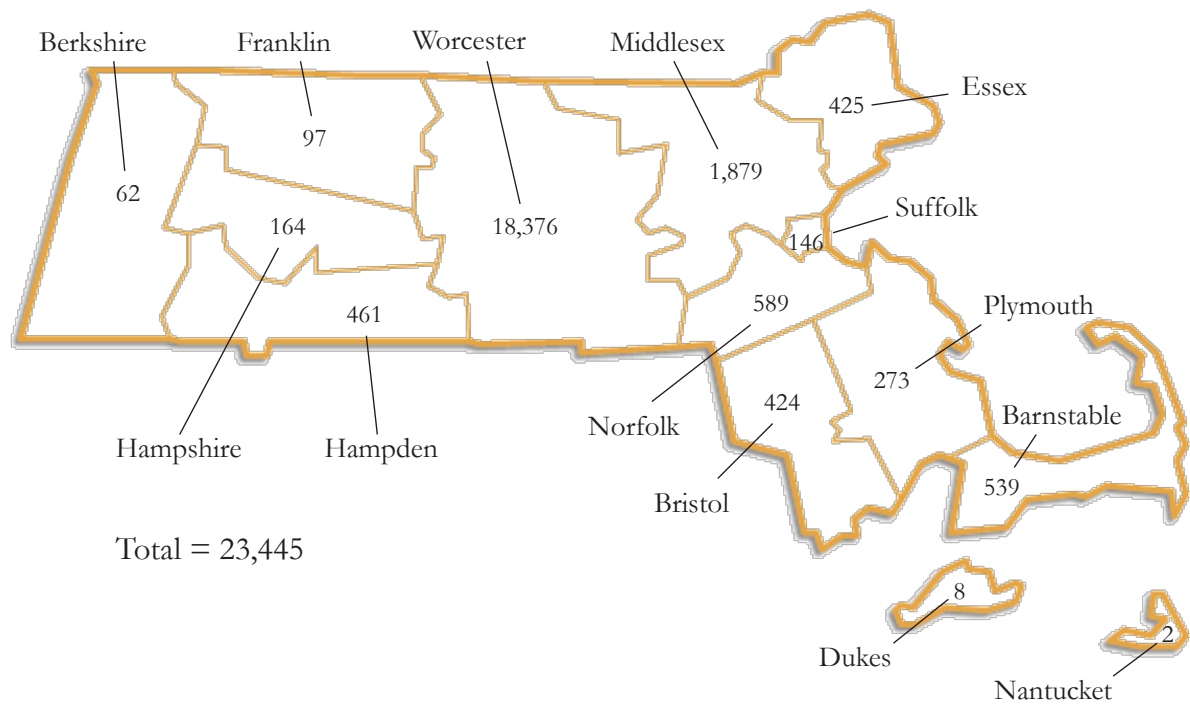
## Total Market Value of Funds Under Management<sup>1</sup>, FY 2009-FY 2013



<sup>1</sup>Total Net Asset Per Official Audit

Source: Office of University Advancement

## Alumni by Massachusetts County of Residence, Fall 2013



Source: Office of University Advancement

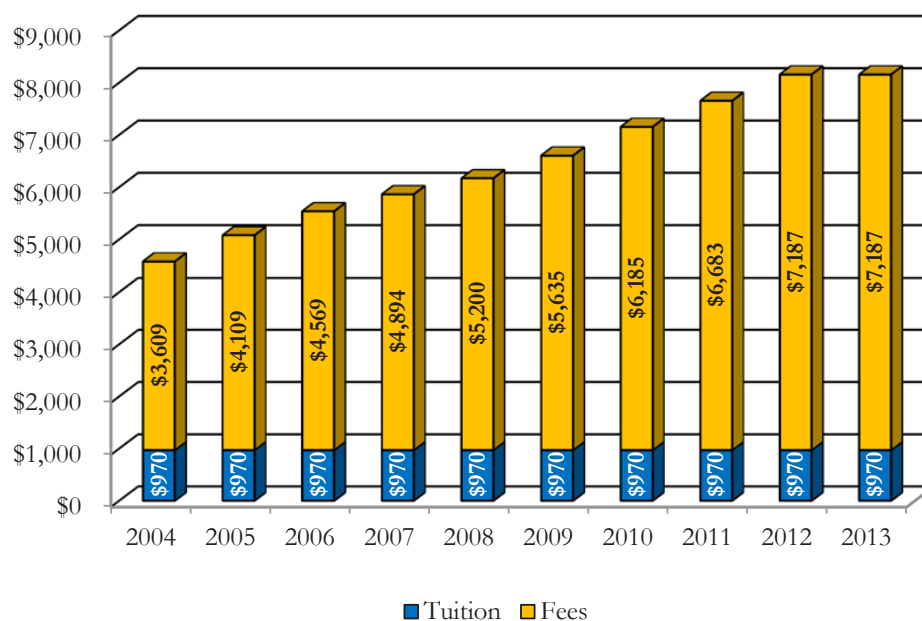




## Financial Information

### Tuition and Fees per Academic Year, 2004-2013

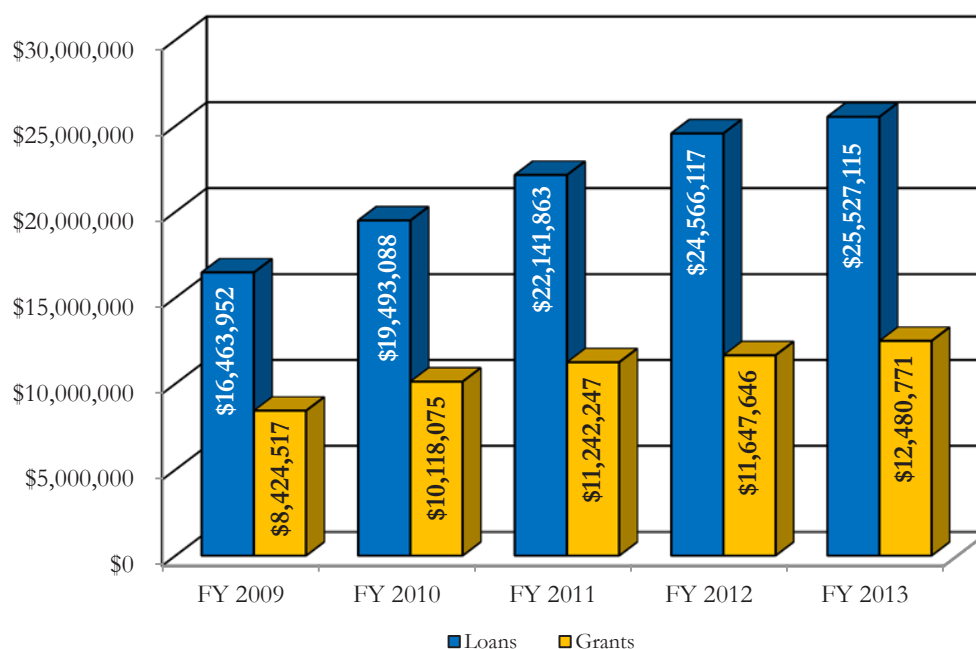
	<i>AY</i> 2004	<i>AY</i> 2005	<i>AY</i> 2006	<i>AY</i> 2007	<i>AY</i> 2008	<i>AY</i> 2009	<i>AY</i> 2010	<i>AY</i> 2011	<i>AY</i> 2012	<i>AY</i> 2013
Tuition	\$970	\$970	\$970	\$970	\$970	\$970	\$970	\$970	\$970	\$970
Fees	\$3,609	\$4,109	\$4,569	\$4,894	\$5,200	\$5,635	\$6,185	\$6,683	\$7,187	\$7,187
<b>Total</b>	<b>\$4,579</b>	<b>\$5,079</b>	<b>\$5,539</b>	<b>\$5,864</b>	<b>\$6,170</b>	<b>\$6,605</b>	<b>\$7,155</b>	<b>\$7,653</b>	<b>\$8,157</b>	<b>\$8,157</b>



Source: Office of Administration and Finance

## Financial Aid Awards, FY 2009-FY 2013

	<i>FY 2009</i>	<i>FY 2010</i>	<i>FY 2011</i>	<i>FY 2012</i>	<i>FY 2013</i>
Loans	\$16,463,952	\$19,493,088	\$22,141,863	\$24,566,117	\$25,527,115
Grants	\$8,424,517	\$10,118,075	\$11,242,247	\$11,647,646	\$12,480,771
<b>Total</b>	<b>\$24,888,469</b>	<b>\$29,611,163</b>	<b>\$33,384,110</b>	<b>\$36,213,763</b>	<b>\$38,007,886</b>



Source: Office of Financial Aid

## Revenues and Expenditures, FY 2011-FY 2013

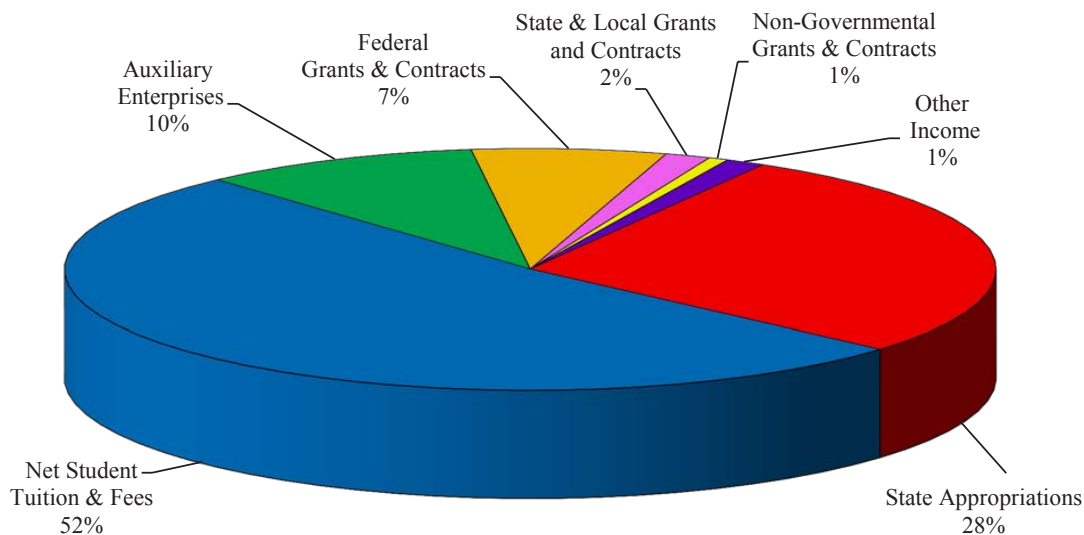
REVENUES	FY 2013	FY 2012	FY 2011
Operating Revenues			
Student Tuition and fees	\$ 41,388,967	\$ 38,714,218	\$ 36,322,718
Less: Scholarship discounts and allowance	7,252,129	8,447,639	7,347,390
Net student tuition and fees	48,641,096	30,266,579	28,975,328
Federal grants and contracts	6,350,039	6,134,752	10,867,450
State and local grants and contracts	1,477,595	1,269,367	944,511
Nongovernmental grants and contracts	636,200	928,886	910,612
Auxiliary enterprises	9,120,518	9,017,786	8,277,300
Other operating revenues	1,281,025	1,197,025	1,127,693
Total operating revenues	\$ 51,829,359	\$ 48,814,395	\$ 51,102,894
EXPENSES			
Operating expenses			
Instruction	\$ 31,349,284	\$ 29,123,787	\$ 28,317,953
Public service	675,857	609,273	466,426
Academic support	6,782,540	6,214,371	5,864,229
Student services	7,220,968	6,578,675	6,115,465
Institutional support	11,443,857	10,016,600	9,339,162
Operation and maintenance of plant	7,622,054	7,784,839	8,416,670
Scholarship	1,207,642	596,114	1,267,657
Depreciation	4,174,992	4,402,075	4,296,608
Debt service	734,283	580,577	591,101
Auxiliary enterprises	7,423,424	8,082,112	8,127,535
Total operating expenses	\$ 78,634,901	\$ 73,988,423	\$ 72,802,806
Operating loss	\$ (26,805,542)	\$ (25,174,028)	\$ (21,698,912)
NONOPERATING REVENUES			
State appropriations	\$ 26,483,839	\$ 25,412,179	\$ 25,931,430
Interest and investment income	(117,299)	1,036,814	307,776
Other nonoperating revenues(expenses)	(9,018)	20,811	3,241
Net nonoperating revenues	\$ 26,357,522	\$ 26,469,804	\$ 26,242,447
Income before other revenues,expenses, gains or losses	\$ (448,020)	\$ 1,295,776	\$ 4,543,535
Capital appropriations		17,078	102,000
Increase in net assets	\$ (448,020)	\$ 1,312,854	\$ 4,645,535
NET ASSETS			
Beginning of year	88,314,805	87,162,957	82,517,422
End of year	\$ 87,866,785	\$ 88,475,811	\$ 87,162,957

Source: Financial Statements year ended June 30, 2013, 2012 and 2011, and Independent Auditor's Report

## Fund Revenues by Source, FY 2013

### REVENUES

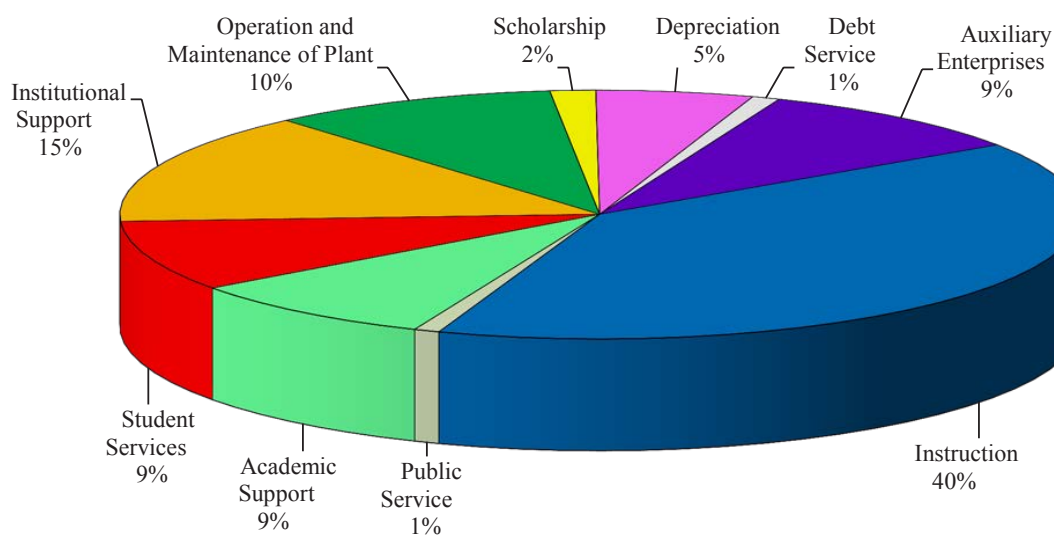
Total = \$78,186,881



## Fund Expenditures by Source, FY 2013

### EXPENSES

Total = \$78,634,901



Source: Financial Statements year ended June 30, 2013, 2012 and 2011, and Independent Auditor's Report



**Office of Institutional Research**

**Phone: (508) 929-8121**

**Fax: (508) 929-8185**



**Change the Way the World Works**