



WORCESTER STATE UNIVERSITY

FACT BOOK 2012



Cover Photo: Shaughnessy Administration Building

FACT BOOK 2012



**Office of Institutional Research
Worcester State University
486 Chandler Street
Worcester, Massachusetts 01602-2597
508-929-8121**

Prepared by:
Kristina Rearick, Ed.D., Database Coordinator/Research Analyst

Kenneth Smith, Director of Institutional Research

Worcester State University is an equal employment/ education opportunity institution.

Table of Contents

INTRODUCTION

President's Message	1
Board and Standing Committees	2
Board of Trustees	2
Standing Committees 2012-2013	2
Campus Administration.....	3
Department Chairs, Fall 2012	4
Organizational Chart.....	5

GENERAL INFORMATION

Worcester State University <i>SNAPSHOT</i> , Fall 2012	11
Brief History of WSU	12
Prologue and Mission Statement	13
Institutional Goals, FY 2012-2014	14
Accreditation	15

STUDENT PROFILE

Longitudinal Enrollment, Fall 2003-Fall 2012	17
Students by Country of Residence, Fall 2012.....	18
Students by State of Residence, Fall 2012.....	19
Students by Massachusetts County of Residence, Fall 2012.....	20
Age of Degree-seeking, First-time Freshmen, Fall 2012.....	21
High School GPA of Degree-seeking, First-time Freshmen, Fall 2012	21
SAT Scores of Degree-seeking, First-time Freshmen, Fall 2012	22
Average Combined SAT, Fall 2012.....	22
Gender and Ethnicity of Degree-seeking, First-time Freshmen, Fall 2012	23
Age of New Degree-seeking, Transfer Students, Fall 2012	24
Ethnicity of New Degree-seeking, Transfer Students, Fall 2012.....	24
Transfer Institutions, Fall 2012.....	25
Majors of New Degree-seeking, Transfer Students, Fall 2012.....	26
Ethnicity of Full-time Students, Fall 2012	27
Ethnicity of Part-time Students, Fall 2012.....	27
Gender of Full-time Students, Fall 2012	28
Gender of Part-time Students, Fall 2012.....	28
Total Enrollment by Student Classification, Fall 2012	29
On-Campus Housing by State of Residence and Class, Fall 2012.....	30

INSTRUCTIONAL PROGRAMS

Student Enrollment by Major and Student Classification, Fall 2012	31
---	----

ACADEMIC ACHIEVEMENT/LEARNING OUTCOMES

Grade Distribution of First-time, Full-time, Degree-seeking Freshmen, Fall 2012	33
First-time, Full-time Freshmen Retention and Graduation Rates	34
Degrees Conferred by CIP Code Category, FY 2012	35

PERSONNEL PROFILE

Employees/Staff, Fall 2012	37
Faculty by Institution of Highest Degree, Fall 2012	39
Full-time Faculty by Department and Rank, Fall 2012	40
Full-time Faculty by Gender and Ethnicity, Fall 2012	41
Full-time Faculty by Gender and Tenure, Fall 2012	41
Full-time Faculty by Gender and Rank, Fall 2012	41
Full-time Faculty by Age Range and Rank, Fall 2012	41
Full-time Faculty by Highest Degree Earned, Fall 2012	42
Average Salaries of Full-time Faculty by Rank and Gender, Fall 2012	43
Average Faculty Salaries Comparison, AY 2010-2011	44
Average Faculty Salaries Comparison, AY 2011-2012	45

LIBRARY INFORMATION

Library Holdings, FY 2008-2012	47
--------------------------------------	----

FACILITIES INFORMATION

Physical Plant Facilities, Fall 2012	49
Campus Map	50

INSTITUTIONAL ADVANCEMENT

Foundation Board of Directors, Alumni Board and Directors, 2012-2013	51
Total Market Value of Funds Under Management, FY 2008-FY 2012	52
Alumni by Massachusetts County of Residence, 2012	53

FINANCIAL INFORMATION

Tuition and Fees per Academic Year, 2003-2012	55
Financial Aid Awards, FY 2008-FY 2012	56
Revenues and Expenditures, FY 2010-FY 2012	57
Fund Revenues by Source – FY 2012	58
Fund Expenditures by Functions – FY 2012	58

Introduction

President's Message

A Message from Barry M. Maloney, President of Worcester State University

This past year has been an inspirational and productive year. Worcester State University completed two years of comprehensive evaluation with a visit by a team representing the Commission on Institutions of Higher Education of the New England Association of Schools and Colleges (NEASC). WSU has been accredited by the Commission since 1957 and was last reviewed in 2002.



Our campus expansion and renewal projects continue to progress. Renovations to the Learning Resource Center wrapped up at fall semester's end and we are on target to open a new Wellness Center in 2015 and a new residence and dining hall in fall of 2014. The new residence hall will feature meeting and study space for students, employees, and the greater community and will nearly double our dining capacity. The Wellness Center will replace the existing gym building and feature athletic space, instructional space, studio space, and community space. These student-centered buildings will enable students to enjoy and take advantage of a comprehensive university environment for years to come.

I was humbled and energized by my inauguration ceremony in September which capped a series of campus events celebrating our academic rigor and strong ties to our alumni and greater community. As part of the ceremony, we announced the largest philanthropic gift in WSU history. The \$3 million bequest will create a new honors college, fund study abroad programs for students and faculty and provide merit-based scholarships. The gift was given by Lt. Colonel James Sheehan (USMC, Retired), WSU class of '55, and is among the largest philanthropic gifts ever made to a Massachusetts state university. It was wonderful to welcome back WSU alumnus Brian Skerry who delivered a fascinating lecture and presentation of his National Geographic photography from his new book "Ocean Soul" and Worcester Art Museum Director Matthias Waschek addressed our growing relationship in his lecture, "University and the Museum: A Dynamic partnership."

Our faculty and students continue to demonstrate how they are changing the way the world works in a myriad of ways. The Theme Semester topic, "Contagion: How Things and Ideas Spread and Evolve", engaged the university and greater community through thought-provoking lectures, theatre performances and more.

Your university, founded in 1874, continues to rely on hard data to drive all that we do. I hope you find this report, compiled by our Office of Institutional Research, valuable.

Sincerely,

A handwritten signature in dark ink, reading "Barry M. Maloney". The signature is written in a cursive, flowing style.

Barry M. Maloney
President

Board and Standing Committees

Board of Trustees

John P. Brissette '88, *Chair*
George H. Albro '65, '68 M.Ed., *Vice Chair*
Ronald R. Valerio '75, *Vice Chair*
Craig L. Blais
Stephen J. Bostic '77, M.Ed. '86
Isabel Gonzalez-Webster

Maryanne Hammond '69, '72 M.Ed.
Colleen M. McKenna '13
Terence J. Shanley
Shirley A. Steele '59, M.Ed. '62
Robert L. Thomas

Standing Committees 2012-2013

Academic/Student Development:

Ronald Valerio, *Chair*
Colleen McKenna
Terence Shanley
Robert Thomas

Finance and Facilities:

Craig Blais, *Chair*
George Albro
Shirley Steele

Human Resources:

George Albro, *Chair*
Craig Blais
Isabel Gonzalez-Webster
Maryanne Hammond
Terence Shanley

Planning and Development:

Stephen Bostic, *Chair*
Colleen McKenna
Shirley Steele
Ronald Valerio

Note: Chair John Brissette is an ex-officio voting member of each committee.
President Barry Maloney is an ex-officio non-voting member of each committee

Campus Administration

Barry Maloney, <i>President</i>	Karen Sharpe, <i>Executive Director, University Advancement</i>
Charles Cullum, <i>Provost/VP, Academic Affairs</i>	Jillian Anderson, <i>Director, Career Services</i>
Sibyl M. Brownlee, <i>VP, Student Affairs</i>	Lynn E. Bromley, <i>Director, Payroll/Benefits</i>
Kathleen M. Eichelroth, <i>VP, Administration and Finance</i>	Brenda Bussey, <i>Director, Procurement/Business Manager</i>
Thomas M. McNamara, <i>VP, University Advancement</i>	Julie Carmel, <i>Director, Student Accounts</i>
Donald W. Vescio, <i>Interim VP of Enrollment Management</i>	Marion Catacchio, <i>Director, Financial Records, University Advancement</i>
Julie Kazarian, <i>Assoc. VP/Student Affairs, Dean of Students</i>	Julie A. Chaffee, <i>Director, Registrar</i>
Patricia Marshall, <i>Interim Associate VP, Academic Affairs</i>	Susan E. Chapman, <i>Director, Strategic Initiatives</i>
Robin J. Quill, <i>Assoc. VP, Administration and Finance</i>	Joseph DiCarlo, <i>Director, Admissions</i>
William H. White, <i>Assoc. VP & Dean, Graduate and Continuing Education</i>	James Driscoll, <i>Director of Budget, Planning & Policy Development</i>
Carol Lerch, <i>Asst. VP, Assessment and Planning</i>	Melissa Fleming, <i>Director, Student Affairs/Conference & Event Services</i>
Lea Ann Scales, <i>Asst. VP, Public Relations and Marketing</i>	Jane Grant, <i>Director of Leadership Giving, University Advancement</i>
Judith A. St. Amand, <i>Executive Assistant to the President</i>	Calvin Hill, <i>Director, Office of Diversity, Inclusion & Equal Opportunity</i>
Carl Herrin, <i>Asst. to the President for International, Community, & Government Affairs</i>	Alan Jackson, <i>Director, Veterans Affairs</i>
Eihab Jaber, <i>Interim Chief Information Officer, University Technology Services</i>	Frances Manocchio, <i>Director, Disability Services</i>
Charles Fox, <i>Dean, School of Humanities and Social Sciences</i>	Jayne A. McGinn, <i>Director, Financial Aid</i>
Frank Hall, <i>Dean, School of Education, Health & Natural Sciences</i>	Rosemary F. Naughton, <i>Chief of University Police</i>
Roberta Kyle, <i>Associate Dean, Graduate & Continuing Education</i>	Sandra K. Olson, <i>Director, Facilities</i>
Raynold Lewis, <i>Interim Assoc. Dean, Education, Health & Natural Sciences</i>	Katey Palumbo, <i>Interim Director, International Programs</i>
Timothy J. Sullivan, <i>Associate Dean, Student Affairs and Director, Student Activities & Student Center</i>	Angela Quitadamo, <i>Director of Retention</i>
Adrian Gage, <i>Assistant Dean, Student Affairs/Director of Residence Life</i>	Nancy Ramsdell, <i>Director, Outreach & Technology Development, University Technology Services</i>
Sara Grady, <i>Assistant Dean, Graduate & Continuing Education</i>	Katharine Ritter, <i>Interim Director, Library</i>
Laura A. Murphy, <i>Assistant Dean/Director, Counseling Services</i>	David Roach, <i>Director, Center for Effective Instruction</i>
Marcella Uribe-Jennings, <i>Assistant Dean/Director, Office of Multicultural Affairs</i>	Susan Seibel, <i>Director, Intensive English Language Institute</i>
Honee Hess, <i>Executive Director, Worcester Center for Crafts</i>	Kenneth A. Smith, <i>Director, Institutional Research</i>
Mary Jo Marion, <i>Executive Director, Latino Educational Institute</i>	Gerald E. Sorge, <i>Director, Academic Affairs Administrative Support</i>
	Tammy Tebo, <i>Director, Academic Success Center</i>
	Russell E. Vickstrom, <i>Director, Human Resources</i>
	Mark Wagner, <i>Director, The Center for Service Learning & Civic Engagement</i>
	John Meany, <i>Interim Senior Assoc. Director, Athletics</i>
	Lisa Godfrin, <i>Interim Asst. Director, Advancement Services, University Advancement</i>

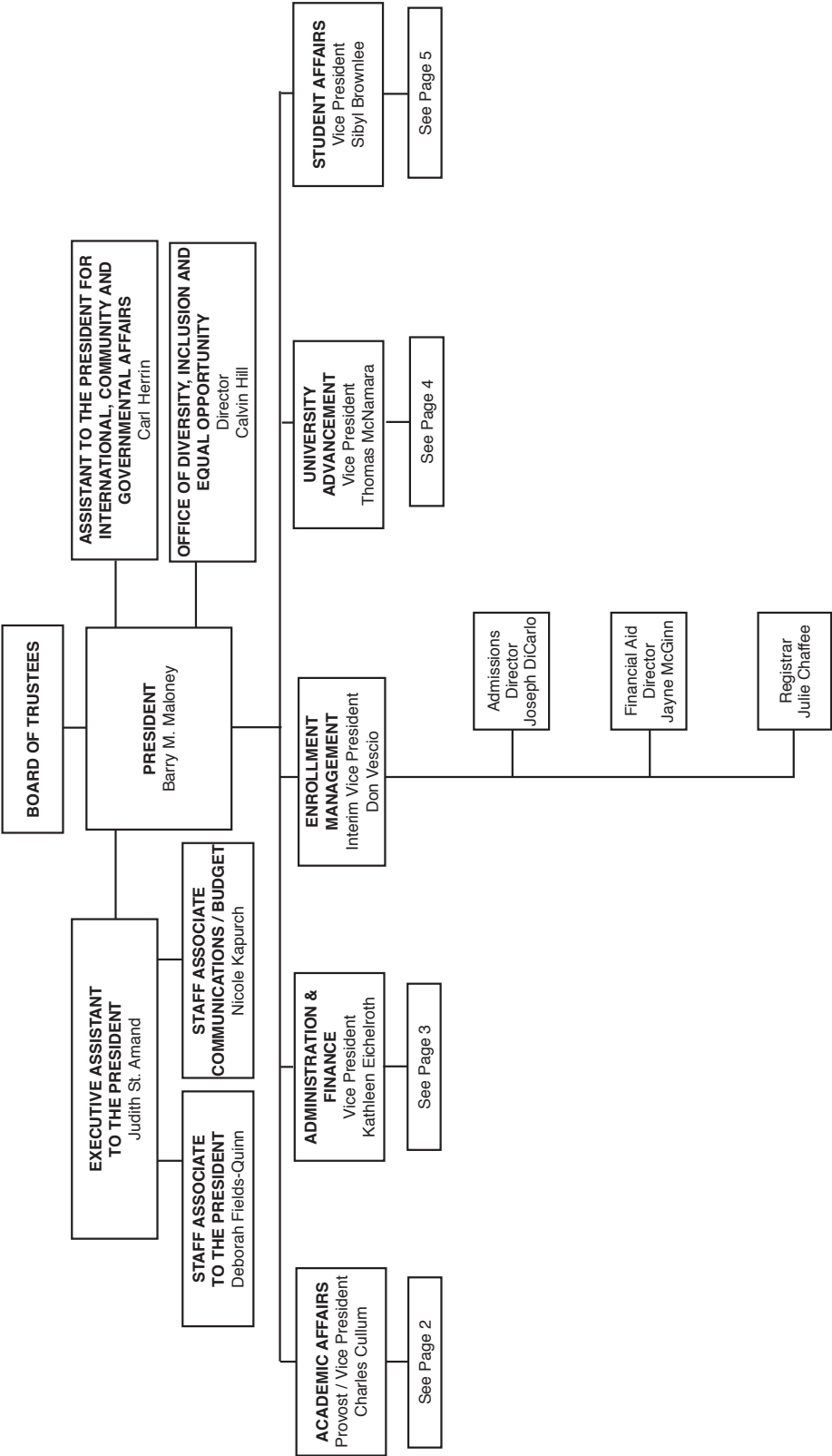
Note: President Maloney is an ex-officio non-voting member of each committee.

Department Chairs, Fall 2012

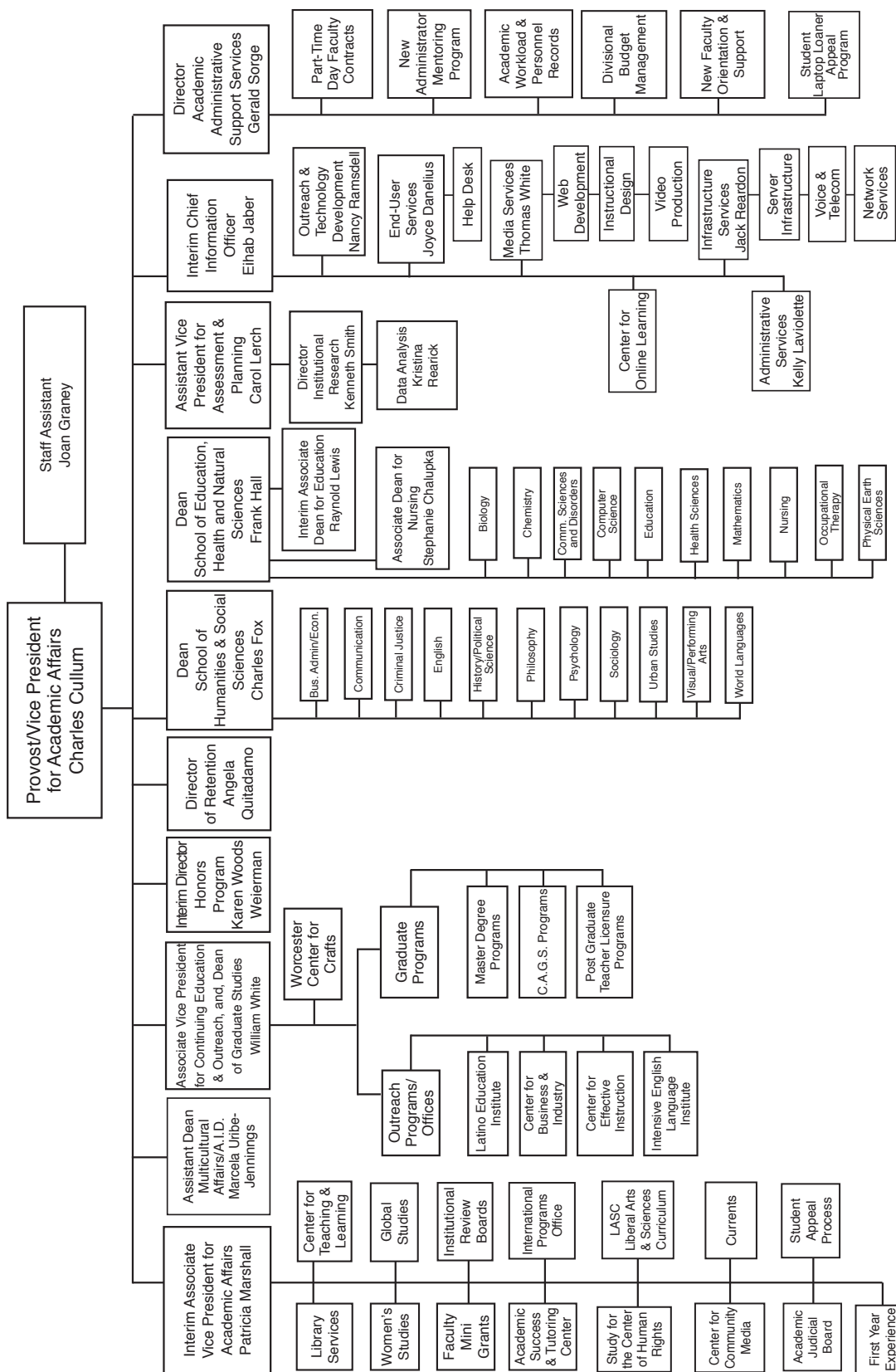
<i>Name</i>	<i>Department</i>
Ellen Fynan	Biology
Renuka Jain	Business and Economics
Margaret Kerr	Chemistry
Don Bullens	Communication
Linda Larrivee	Communication Sciences & Disorders
Karl Wurst	Computer Science
Robert Brooks	Criminal Justice
Carol Donnelly	Education
Dennis Quinn	English
Helena Semerjian	Health Sciences
Frank Minasian	History and Political Science
Mary Fowler	Mathematics
Annmarie Samar	Nursing
Margaret Hart	Occupational Therapy
Henry Theriault	Philosophy
Patricia Benjamin	Physical and Earth Science
Bonnie Kanner	Psychology
Matthew Johnsen	Sociology
Thomas Conroy	Urban Studies
Adam Zahler	Visual & Performing Arts
Dennis Quinn	World Languages

Organizational Chart

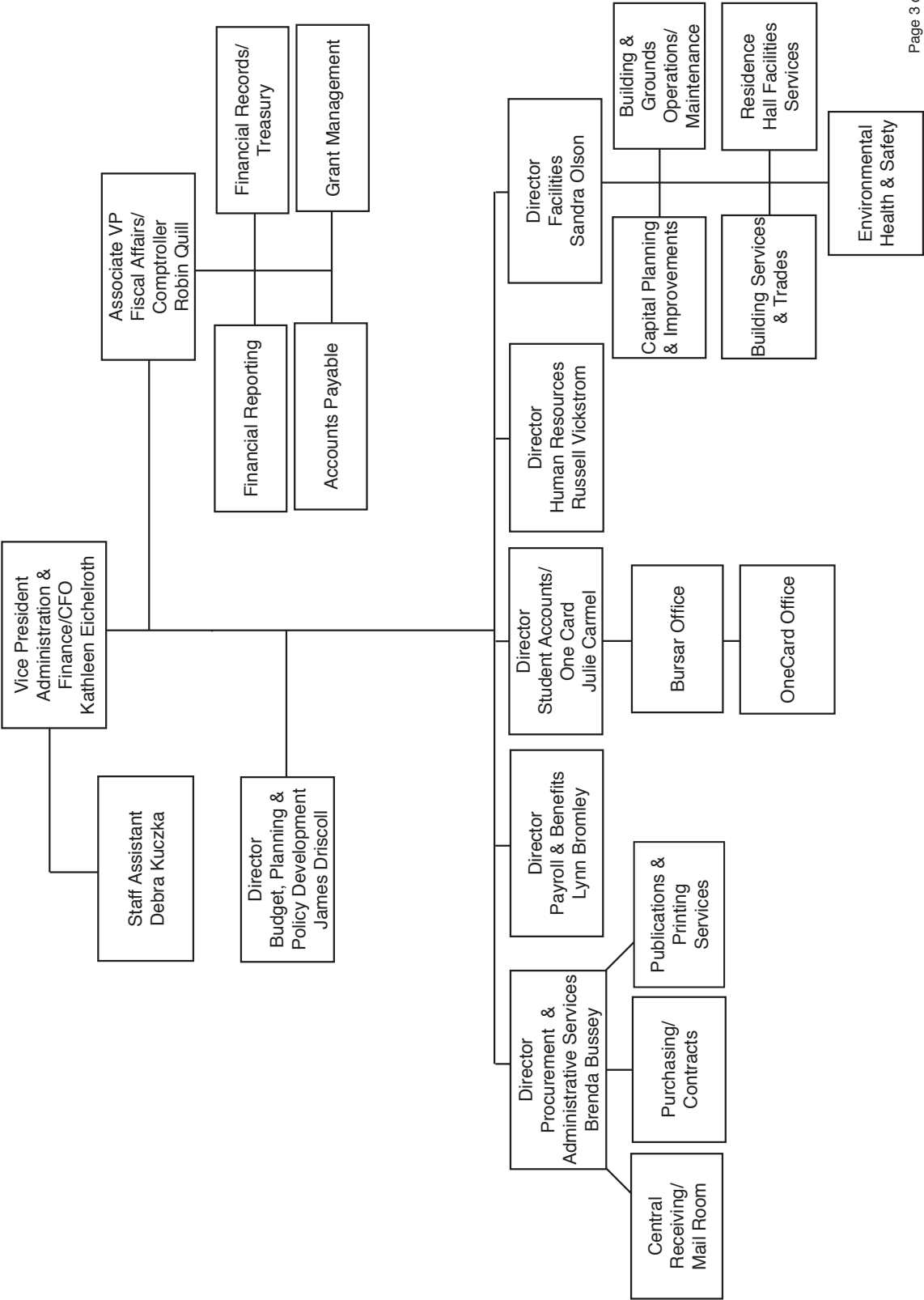
WORCESTER STATE UNIVERSITY
TABLE OF ORGANIZATION



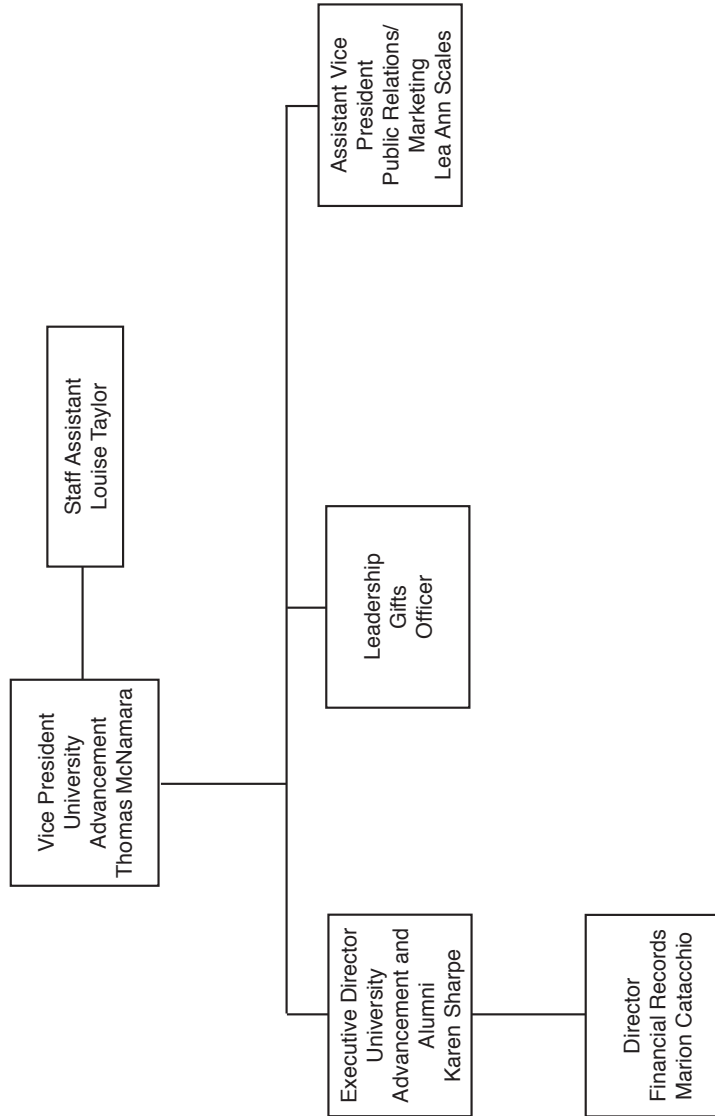
Division of Academic Affairs



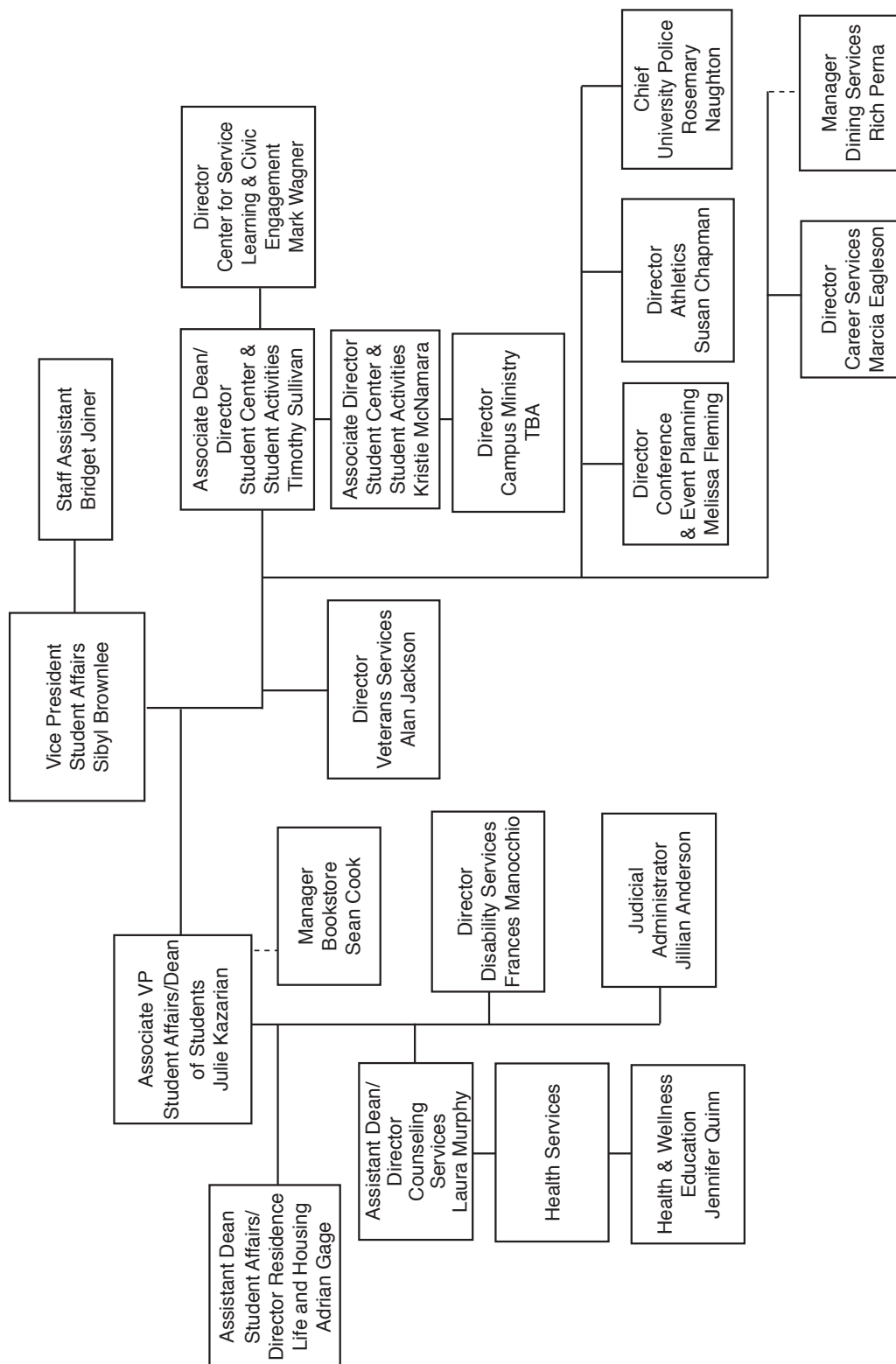
Division of Administration and Finance



Division of University Advancement



Division of Student Affairs



General Information

Worcester State University Fall 2012 Snapshot

STUDENT PROFILE

Fall 2012 Total Enrollment:

Undergraduate Full-Time	3,973
Undergraduate Part-Time	1,334
Graduate Full-Time	189
Graduate Part-Time	725
Total Headcount	6,221

Undergraduate Degree-Seeking Student Characteristics:

Women (Undergraduate)	60%
Men (Undergraduate)	40%
Out of State	2.5%
International (9 Countries)	0.7%
Minority ¹ Students	16.8%
Residential Students ²	31%
Average Age	22.7
First-time Freshmen Average HSGPA	3.14
First-time Freshmen Average SAT Score	1,003
First-time Freshmen Retention (Fall 2011, 1st year)	78.1%
Graduation (2006, 6th year)	51%

First-time Freshmen Admissions:

Applied	3,434
Accepted	2,340
Accepted & Enrolled	784

Transfer Admissions:

Applied	942
Accepted	812
Accepted & Enrolled	534

FINANCES

Cost of Attendance:

Undergraduate Tuition	\$ 970
Undergraduate Fees	\$ 7,187
Room and Board (Average)	\$ 10,500

Revenues (2011-2012):

State Appropriation	\$25,412,179
Tuition and Fees-Net	\$30,293,578
Other Sources	\$19,605,442
Total Revenues	\$75,311,199

Student Financial Aid (2011-2012):

Students Receiving FAID	3,949
Average Size of Award	\$ 9,193
Students on WSU Scholarships	1,380

Market Value of Funds under Management (FY 2012): \$15,326,124

Endowment (FY 2012): \$10,573,433

FACULTY-STAFF PROFILE

Faculty: (from IPEDS Data)

Full-Time (includes Librarians)	199
Part-Time Faculty (Adjuncts only)	226
Full-Time Faculty with PhD/T Degree	156
Student to Faculty Ratio ³	18 : 1

Staff: (Full-time)

Association of Professional Adm.	116
AFSCME	160
Non Unit Professionals	40

ACADEMICS

Academic Programs:

Undergraduate Majors	25
Undergraduate Minors	32
Graduate Programs	25
Study Abroad Programs	73

Largest Major (1st Major only):

Business Administration	748
Criminal Justice	445
Psychology	444
Biology	306
Undeclared	273

Average Undergraduate Class Size:

	19
--	----

Degrees Conferred (2011-2012):

Baccalaureate's	861
Post Bachelor's Certificates	169
Master's	195
Certificate of Advanced Graduate Study	8
Total Degrees Conferred	1,233

STUDENT LIFE

Organizations, Clubs & Honor Societies:

Student Organizations and Clubs	33
Honor Societies	17

Intercollegiate Sports:

Men	9
Women	10

ALUMNI⁴

Total Alumni	34,845
Alumni Living in MA	23,115
Alumni in Worcester County	18,057
Alumni in the City of Worcester	5,153

¹ Minority includes Black/African American, American Indian/Alaskan Native, Hispanic/Latino, Asian, and Native Hawaiian or other Pacific Islander

² Based only on Full-time, Degree-Seeking, Undergraduate Students

³ FTE Students Taught/FTE Faculty

⁴ Includes both Undergraduate and Graduate Degree Recipients.

Brief History of WSU

Worcester State University was founded as the Worcester Normal School in 1874, the fifth state-funded normal school in Massachusetts and one of dozens of teacher-training schools established during the 19th century.

In 1932, all of the state's normal schools were re-christened "teachers colleges" and the old Normal School became Worcester State Teachers College. That same year, the University moved to its present location on Chandler Street.

The large, colonial-style building now known as the Administration Building was constructed on the site of Willow Farm, owned by Worcester inventor and philanthropist George I. Rockwood. In 1942, Rockwood donated an additional thirty-five acres, paving the way for campus expansion.

The University's fifth president, Dr. Eugene A. Sullivan (1947-1970), presided over a period of unprecedented growth. From 1947 to 1970, enrollment grew from 150 students (all pursuing education degrees) to nearly 2,800 students pursuing a variety of degrees. In 1952, the University introduced its first graduate degree, a master of science in education. Campus expansion included construction of the Gymnasium and Classroom Building in 1958, the Science Building in 1965 (rechristened the Dr. Eugene A. Sullivan Building in 1980), and the Learning Resource Center in 1970. Dr. Sullivan also laid the groundwork for construction of Chandler Village, the first student residence hall on campus.

By 1963, the former teachers college had evolved into a liberal arts and sciences college, a transition acknowledged by the Board of Education in 1963 when it voted to change the school's name to Worcester State College.

In 1974, the curriculum was expanded to include a B.S. in business administration and a B.S. in nursing, the first Bachelor of Science program for registered nurses in New England and the first to be accredited by the National League of Nurses.

That same year, the University established The Graduate School, which offered several new master's degree programs. During the 1980s, the University expanded its programs to include the area's first Master of Science in Speech-Language Pathology and the first bachelor's degree in Occupational Therapy in the state college system.

During the presidency of Dr. Kalyan K. Ghosh (1992-2002), the University incorporated the widespread use of technology, from computer-based learning to a campus-wide network. In 2000, the University opened the 110,000-square-foot Kalyan K. Ghosh Center for Science and Technology, with instructional laboratory facilities for twelve academic programs and a 196-seat multimedia lecture hall.

The University welcomed its first female president, Dr. Janelle C. Ashley, in 2002. Under her leadership the campus has undertaken major renovation and building projects, including construction of Wasylean Hall, an award-winning 348-bed residence hall that opened its doors in 2004, and expansion of Dowden Hall, which increased the number of beds for resident students to 1,200.

In 2010, the Massachusetts Legislature voted to grant university status to Massachusetts state colleges, recognition of the fact that the schools qualified as universities according to the classification of institutions of higher education established by the Carnegie Foundation for the Advancement of Teaching. The old Worcester Normal School had officially evolved into Worcester State University.

Barry M. Maloney, the 11th president of Worcester State University, assumed the helm in July 1, 2011. He was officially sworn in on September 21, 2012.

Prologue

From its founding in 1874, Worcester State University has been dedicated to educational programs that lead to self-enrichment and to careers in the professions, government, business, and industry.

As a public, state operated university governed by a local Board of Trustees under the direction of the Massachusetts Department of Higher Education, Worcester State University is empowered to award baccalaureate and master's degrees in education and in the arts and sciences. While continuing its tradition of serving the residents of the Commonwealth, Worcester State University has earned a reputation for quality teaching by dedicated faculty in classes of moderate size, and for programs responsive to its students' and society's changing needs.

Mission

Worcester State University, a public metropolitan institution of higher learning located in a culturally vibrant region of the Commonwealth, affirms the principles of liberal learning as the foundation for all advanced programs of study.

Worcester State University offers programs in the traditional liberal arts and sciences disciplines, while maintaining its historical focus on teacher education. It has expanded its offerings with professional degree programs in biomedical sciences, business, and the health professions. Through its curricula, Worcester State addresses the intellectual and career needs of the increasingly diverse citizenry of central Massachusetts.

Worcester State University is dedicated to offering high quality, affordable undergraduate and graduate academic programs and to promoting lifelong intellectual growth, global awareness, and career opportunities of its students. To this end, Worcester State University values teaching excellence rooted in scholarship and community service; cooperates with the business, social, and cultural resources of Worcester County; collaborates with other institutions of higher learning in the region; and develops new programs responsive to emerging community needs.

Institutional Goals 2012-2014

Goal #1: *Actively promote student centered academic environments that provide rigorous learning opportunities and scholarship.*

Goal #2: *Promote an inclusive decision making process that is driven by qualitative and quantitative data while maintaining a student centered focus.*

Goal #3: *Prepare students for life and careers in a diverse and rapidly changing world.*

Goal #4: *Foster an environment of open communication, collaboration, inclusion, and respect.*

Goal #5: *Foster an ethos of sustainability that informs all aspects of the university community.*

Goal #6: *Cultivate and enhance local, regional, and global connections to strengthen WSU's impact on the world.*



For more information, please check out our website
<http://www.worcester.edu/StrategicPlanning/Shared%20Documents/2010-2014%20Goals.aspx>

Accreditation

Worcester State University is accredited by the New England Association of Schools and Colleges, Inc., a non-governmental, nationally recognized organization whose affiliated institutions include elementary schools through collegiate institutions offering postgraduate instruction.

Accreditation of an institution by the New England Association indicates that it meets or exceeds criteria for the assessment of institutional quality periodically applied through a peer group review process. An accredited school or college is one which has available the necessary resources to achieve its stated purposes through appropriate educational programs, is substantially doing so, and gives reasonable evidence that it will continue to do so in the foreseeable future. Institutional integrity is also addressed through accreditation.

The following programs are also accredited by their respective professional organizations:

- Nursing: The National League for Nursing
- Speech-Language Pathology: The American Speech-Language-Hearing Association
- Occupational Therapy: Accreditation Council for Occupational Therapy Education
- Nuclear Medicine Technology: The Joint Review Committee on Educational Programs in Nuclear Medicine Technology.
- School Psychology: National Association of School Psychologists

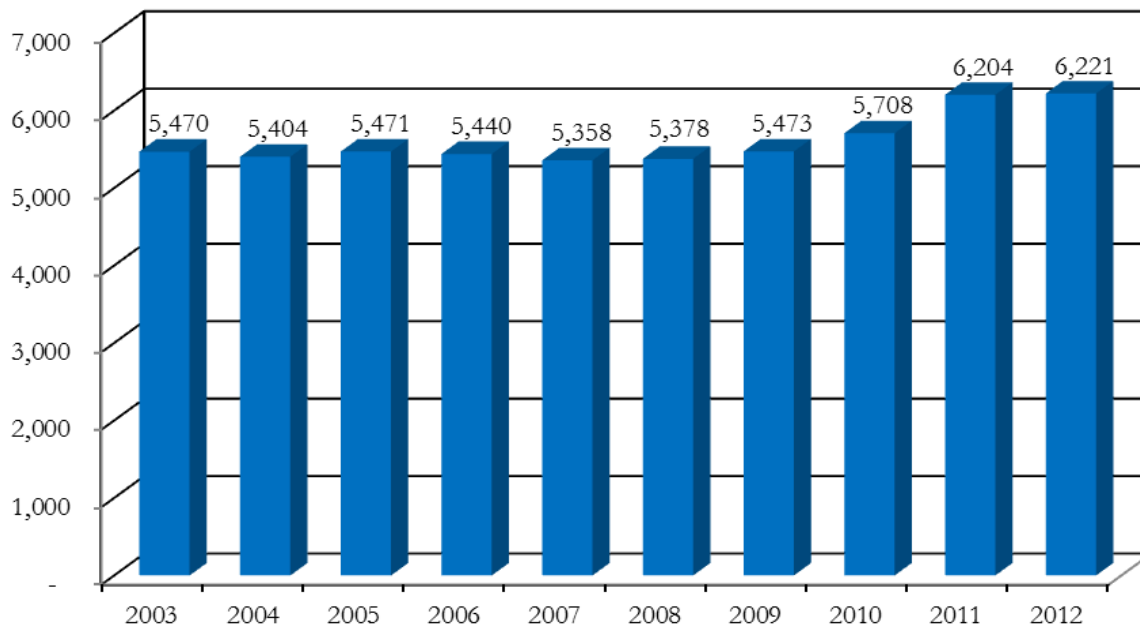
Worcester State University has been named “Best in the Northeast”, by the Princeton Review for the eighth year in a row. It is the only Massachusetts state university with this designation. WSU was recognized as one of two Massachusetts state universities in the top tier of the 2013 “Best Regional Universities” of the 2012 U.S. News and World Report College Rankings. WSU was also recognized for having the highest alumni giving rate in the state university system.



Worcester State University has been named “Best College” by Worcester Magazine for the seventh time. The university also received this honor in 2002, 2006, 2007, 2009, 2010 and 2011.

Student Profile

Longitudinal Enrollment, Fall 2003-Fall 2012



Source: IR Official DHE Fall Files

Students by Country of Residence, Fall 2012

<i>Country</i>	<i>Undergraduate</i>	<i>Graduate</i>	<i>Total</i>
Albania	5	0	5
Brazil	0	1	1
Canada	2	0	2
China	14	2	16
Colombia	0	1	1
Ghana	2	0	2
Greece	1	0	1
India	0	3	3
Kenya	3	2	5
Korea, Democratic People's Republic of	1	0	1
Korea, Republic of	1	1	2
Nepal	1	0	1
Russian Federation	0	1	1
Syrian Arab Republic	1	0	1
Turkey	1	1	2
United States of America	5,265	902	6,167
Venezuela	1	0	1
Vietnam	9	0	9
Total	5,307	914	6,221

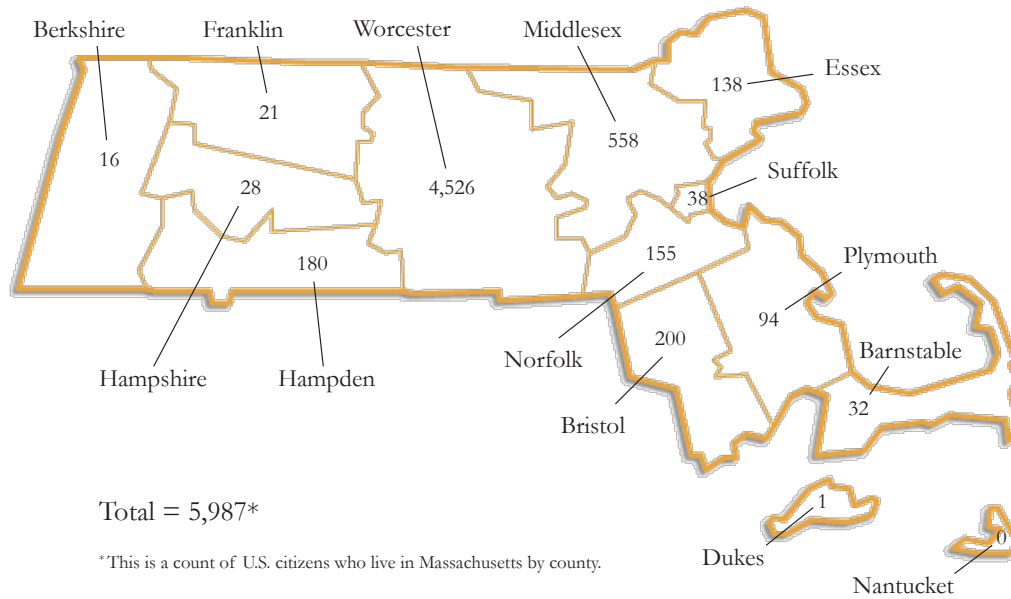
Source: IR Official DHE Fall Files

Students by State of Residence, Fall 2012

State	<u>Undergraduate</u>			<u>Graduate</u>			Total
	Male	Female	Total	Male	Female	Total	
California	2	0	2	0	0	0	2
Colorado	2	0	2	0	0	0	2
Connecticut	27	43	70	4	11	15	85
Delaware	1	0	1	0	0	0	1
Florida	1	0	1	0	0	0	1
Idaho	1	0	1	0	0	0	1
Illinois	2	0	2	0	0	0	2
Kentucky	1	0	1	0	0	0	1
Massachusetts	2,025	3,097	5,122	224	641	865	5,987
Maine	0	2	2	0	1	1	3
Minnesota	0	1	1	0	0	0	1
North Carolina	1	0	1	0	0	0	1
New Hampshire	4	8	12	0	6	6	18
New Jersey	4	1	5	0	0	0	5
New York	4	4	8	1	2	3	11
Oklahoma	1	0	1	0	0	0	1
Pennsylvania	1	0	1	1	0	1	2
Rhode Island	4	18	22	3	8	11	33
Texas	1	1	2	0	0	0	2
Vermont	1	2	3	0	0	0	3
Washington	1	0	1	0	0	0	1
Unknown	2	2	4	0	0	0	4
Non-US Citizen	22	20	42	4	8	12	54
Total	2,108	3,199	5,307	237	677	914	6,221

Source: IR Official DHE Fall Files

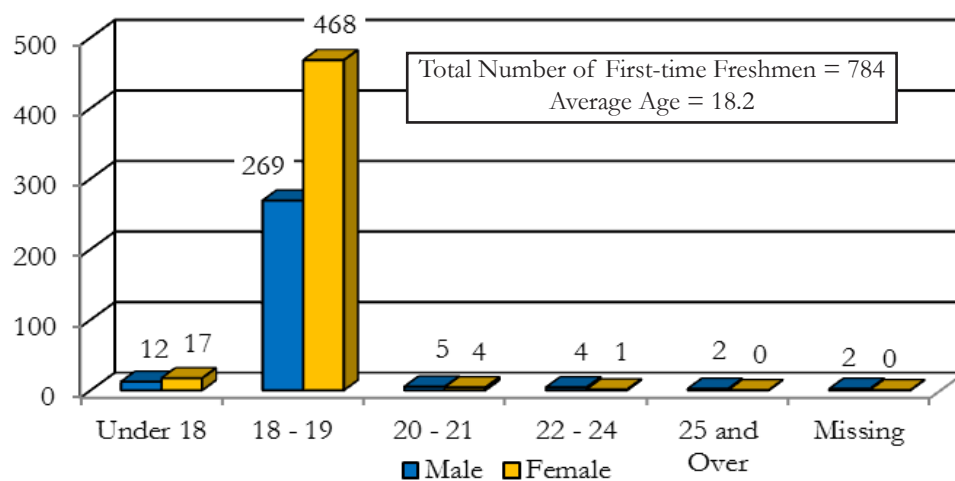
Students by Massachusetts County of Residence, Fall 2012



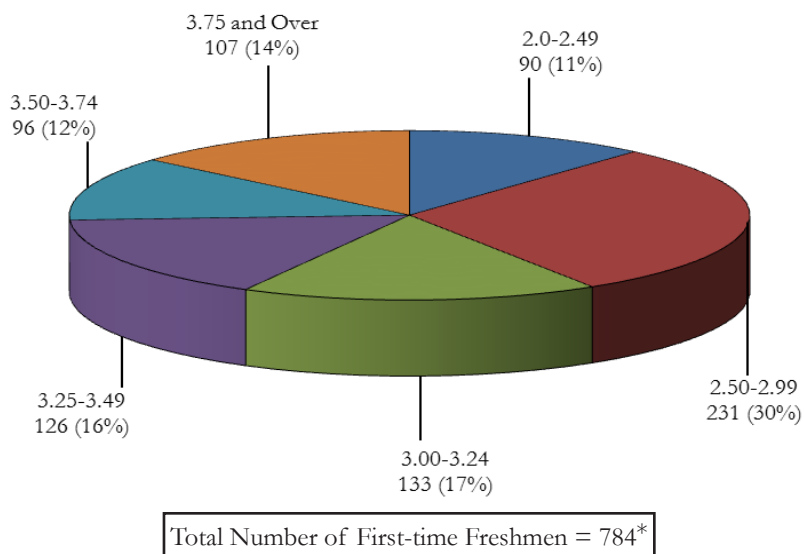
County	Undergraduate	Graduate	Total
Barnstable	27	5	32
Berkshire	14	2	16
Bristol	180	20	200
Duke	1	0	1
Essex	127	11	138
Franklin	18	3	21
Hampden	166	14	180
Hampshire	24	4	28
Middlesex	486	72	558
Norfolk	135	20	155
Plymouth	83	11	94
Suffolk	32	6	38
Worcester	3,829	697	4,526
Total	5,122	865	5,987

Source: IR Official DHE Fall Files

Age of Degree-seeking, First-time Freshmen, Fall 2012



High School GPA of Degree-seeking, First-time Freshmen, Fall 2012

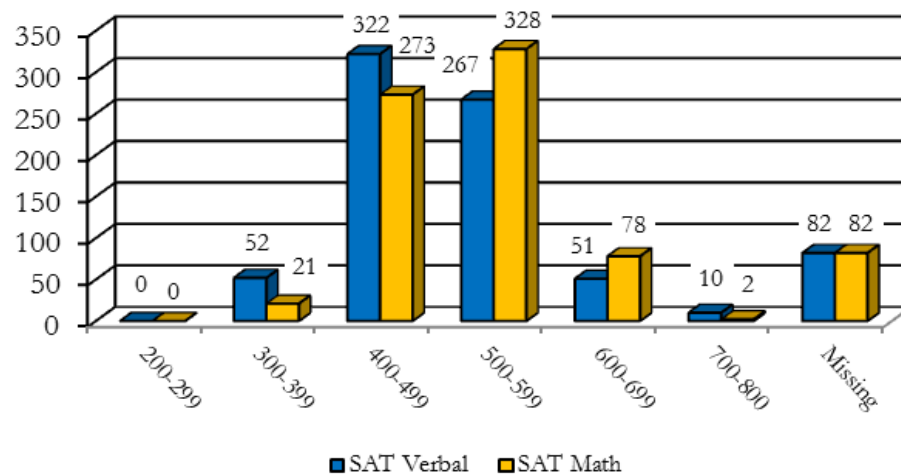


*One student did not submit H.S. GPA

Source: IR Official DHE Fall Files

SAT Scores of Degree-seeking, First-time Freshmen, Fall 2012

Score Range	SAT Verbal			SAT Math		
	Male	Female	Total	Male	Female	Total
200-299	0	0	0	0	0	0
300-399	19	33	52	1	20	21
400-499	110	212	322	83	190	273
500-599	104	163	267	133	195	328
600-699	23	28	51	43	35	78
700-800	5	5	10	1	1	2
Missing	33	49	82	33	49	82
Total	294	490	784	294	490	784



Average Combined SAT Scores, Fall 2012

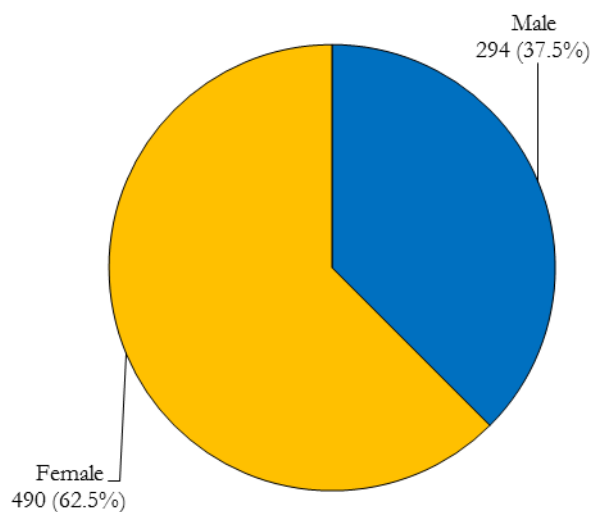
Male 1026.4

Female 989.0

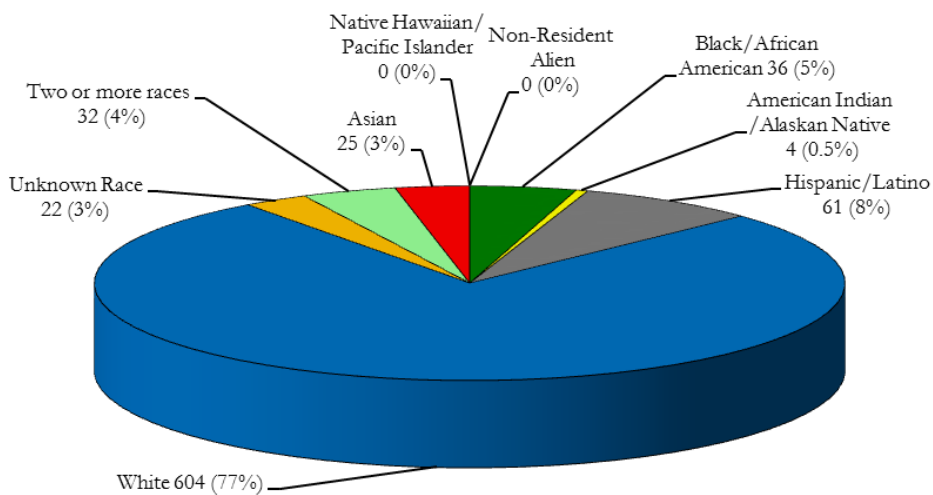
Total 1003.3

Source: IR Official DHE Fall Files

Gender and Ethnicity of Degree-seeking, First-time Freshmen, Fall 2012



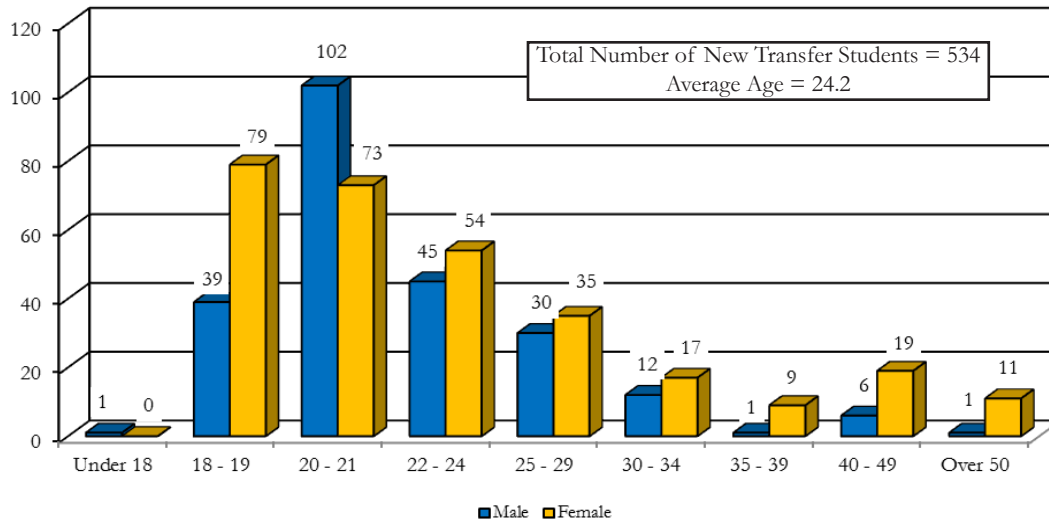
Total Number of First-time Freshmen = 784



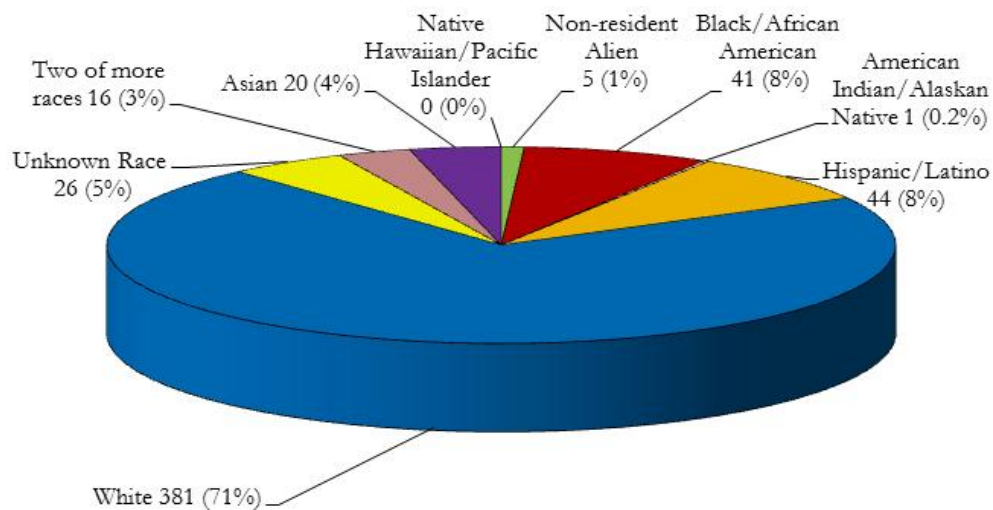
Total Number of First-time Freshmen = 784

Source: IR Official DHE Fall Files

Age of New Degree-seeking, Transfer Students, Fall 2012



Ethnicity of New Degree-seeking, Transfer Students, Fall 2012



Source: IR Official DHE Fall Files

Transfer Institutions, Fall 2012

<i>Institution*</i>	<i># of Students</i>
Quinsigamond Community College	174
Westfield State University	21
Becker College	17
University of Massachusetts at Amherst	15
Fitchburg State University	14
University of Massachusetts at Dartmouth	13
Mass Bay Community College	11
Salem State University	10
Bridgewater State University	10
Dean College	9
Mount Wachusett Community College	8

* Institutions contributing approximately 60% of the transfer students

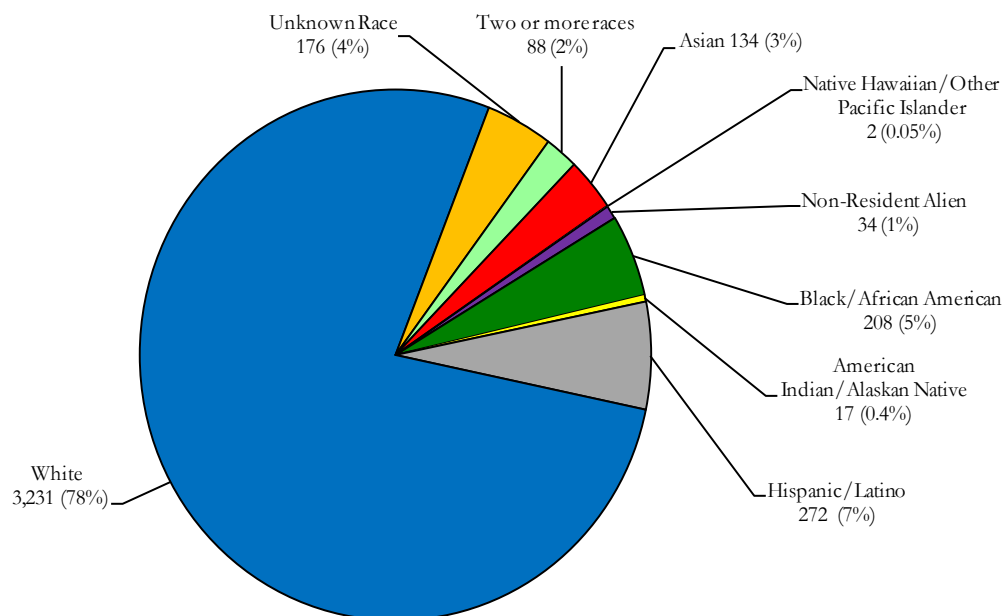
Source: IR Official DHE Fall Files

Majors of New Degree-seeking, Transfer Students, Fall 2012

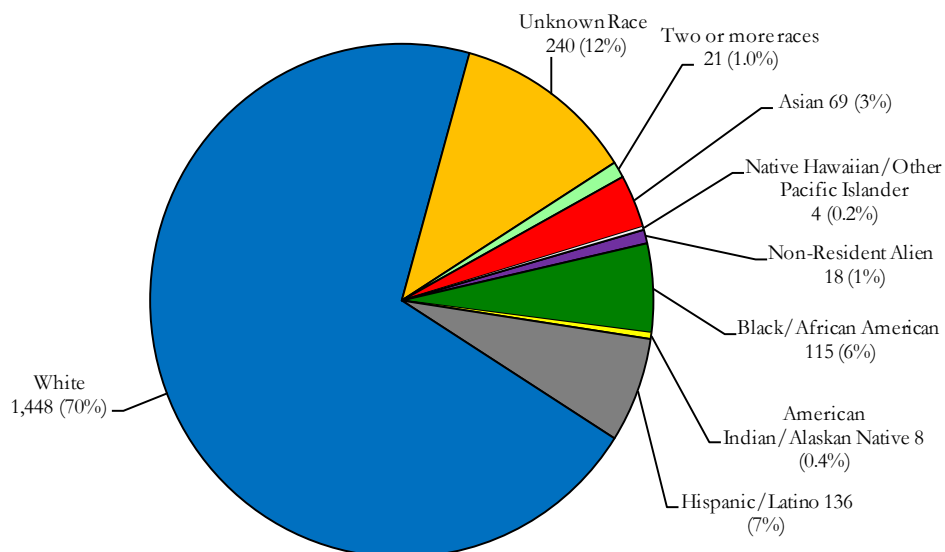
<i>Major</i>	<i>Male</i>	<i>Female</i>	<i>Total</i>
Biology	15	29	44
Biotechnology	6	4	10
Business Administration	63	37	100
Chemistry	6	13	19
Communication	11	19	30
Communication Sciences & Disorders	1	13	14
Community Health	1	12	13
Computer Science	13	0	13
Criminal Justice	44	17	61
Early Childhood Education	0	11	11
Early Childhood Education (Non-Licensure)	0	7	7
Economics	2	4	6
Elementary Education	2	7	9
English	3	10	13
Geography	1	0	1
Health Education	7	4	11
History	14	5	19
Mathematics	6	4	10
Natural Science	5	4	9
Nursing (Track 1)	1	0	1
Nursing (Track 1) NUL	0	2	2
Nursing (Track 2)	0	1	1
Nursing (Track 2) NUM	1	6	7
Psychology	10	37	47
Sociology	3	4	7
Spanish	0	1	1
Undeclared	17	21	38
Undeclared ED	1	14	15
Urban Studies	2	5	7
Visual & Performing Arts	2	6	8
Total	237	297	534

Source: IR Official DHE Fall Files

Ethnicity of Full-time Students, Fall 2012

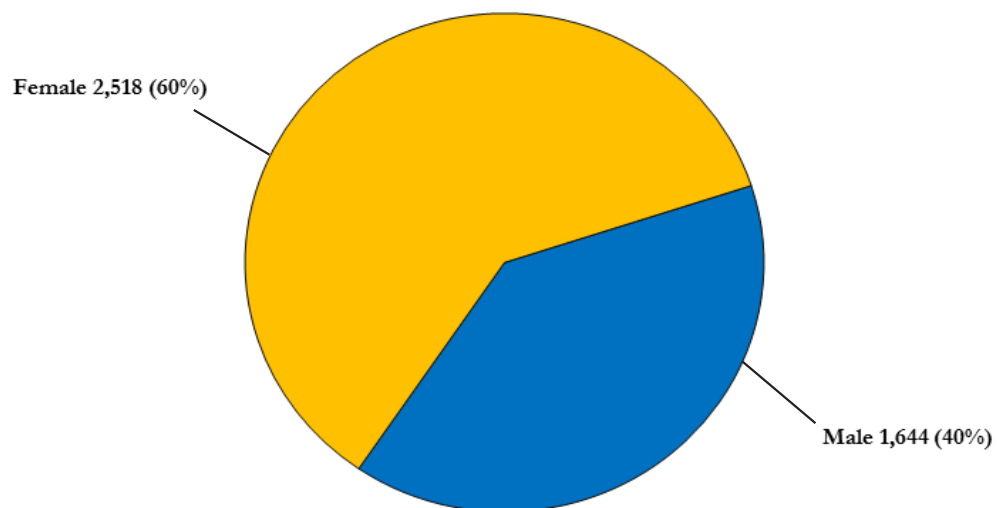


Ethnicity of Part-time Students, Fall 2012

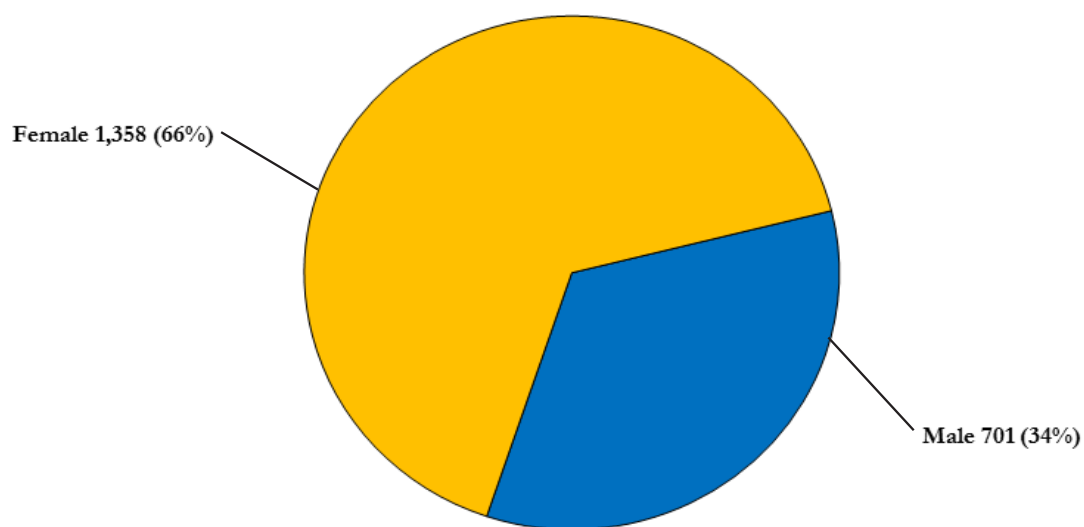


Source: IR Official DHE Fall Files

Gender of Full-time Students, Fall 2012

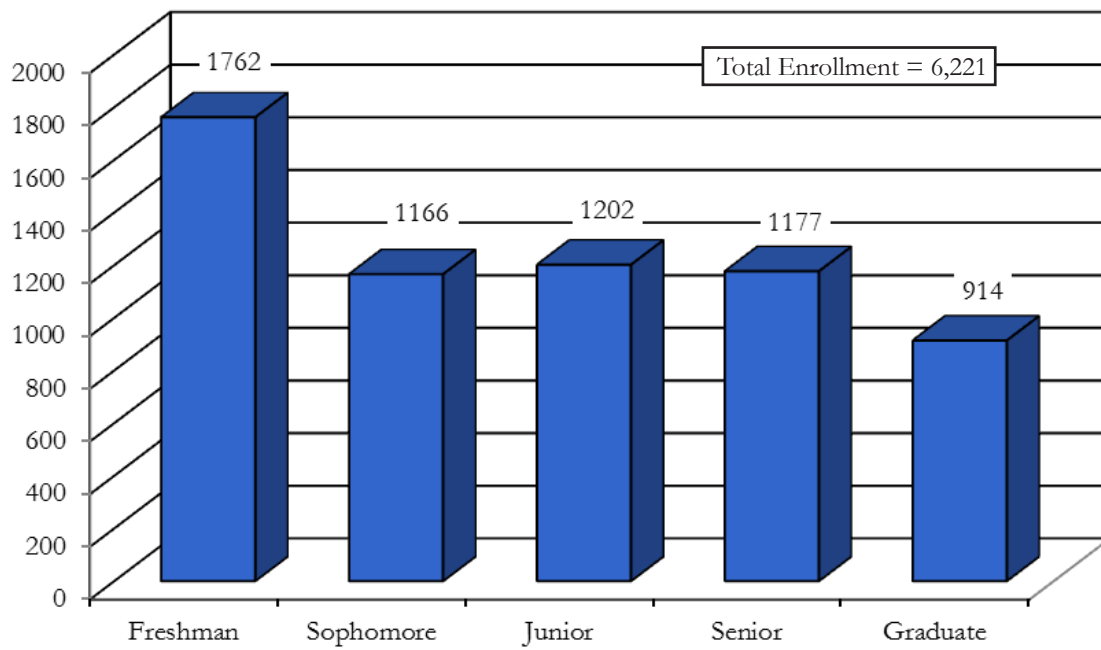


Gender of Part-time Students, Fall 2012



Source: IR Official DHE Fall Files

Total Enrollment by Student Classification, Fall 2012



Source: IR Official DHE Fall Files

On-Campus Housing by State of Residence and Class, Fall 2012

<i>Class</i>	<i>Residence</i>	<i>Total</i>
Freshman	Connecticut	16
	Florida	1
	Idaho	1
	Illinois	2
	Kentucky	1
	Massachusetts	600
	New Hampshire	2
	New Jersey	2
	New York	3
	Oklahoma	1
	Pennsylvania	1
	Rhode Island	1
	Non-Resident Alien	4
Total		635
Sophomore	Connecticut	12
	Massachusetts	281
	New Hampshire	1
	New Jersey	1
	New York	1
	Rhode Island	7
	Vermont	1
Total		304
Junior	California	1
	Connecticut	1
	Maine	1
	Massachusetts	180
	New Hampshire	1
	Rhode Island	1
Total		185
Senior	Connecticut	2
	Massachusetts	87
Total		89
Grand Total		1,213

Source: IR Official DHE Fall Files

Instructional Programs

Student Enrollment by Major and Student Classification, Fall 2012

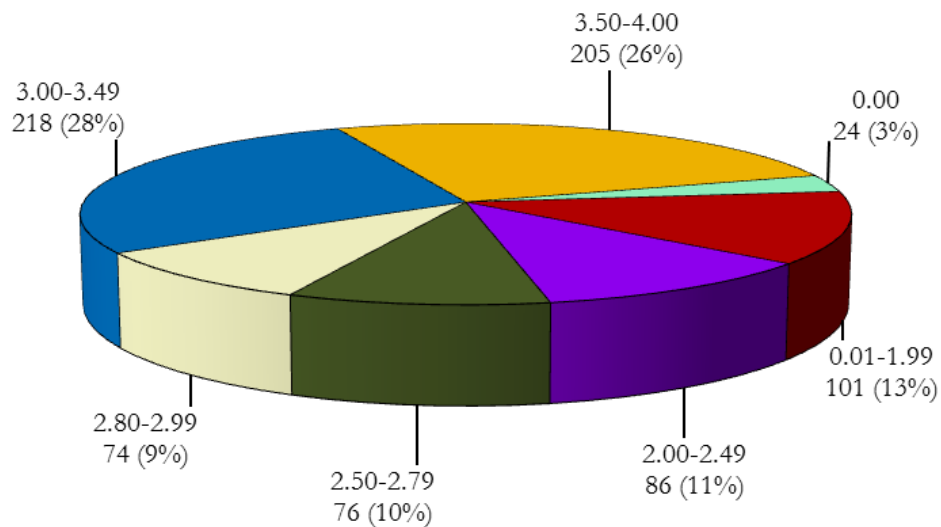
Major ¹	Student Classification		Total
	Undergraduate	Graduate	
Biology	306	N/A	306
Biotechnology	80	26	106
Business Administration	748	N/A	748
Chemistry	141	N/A	141
Communication	245	N/A	245
Communication Sciences & Disorders	218	N/A	218
Community Health	158	N/A	158
Computer Science	116	N/A	116
Criminal Justice	445	N/A	445
Early Childhood Education	80	19	99
Early Childhood Education, Non-Licensure	26	N/A	26
Economics	38	N/A	38
Education	N/A	15	15
(Concentration)			
Education	N/A	4	4
Health Education	N/A	11	11
Elementary Education	147	23	170
English	161	13	174
Geography	30	N/A	30
Health Care Administration	N/A	18	18
Health Education	121	N/A	121
History	199	21	220
Management	N/A	33	33
Mathematics	70	N/A	70
Middle School Education	N/A	26	26
Moderate Special Needs	N/A	17	17
Natural Science	46	N/A	46
Non-Profit Management	N/A	22	22
Nursing	310	44	354
(Concentration)			
Community & Public Health Nursing	N/A	31	31
Nurse Educator	N/A	13	13
Nursing (Track 1)	249	N/A	249
Nursing (Track 2)	48	N/A	48
Nursing (Track 1) NUL	3	N/A	3
Nursing (Track 2) NUM	10	N/A	10
Occupational Studies	104	N/A	104
Occupational Therapy	N/A	57	57
Psychology	444	N/A	444
Reading	N/A	11	11
School Leadership & Administration	N/A	56	56
School Psychology	N/A	26	26
Secondary Education	N/A	66	66
Sociology	79	N/A	79
Spanish	29	14	43
Speech-Language Pathology	N/A	91	91
Urban Studies	52	N/A	52
Visual & Performing Arts	59	N/A	59
Undeclared	273	0	273
Undeclared - Education ²	83	0	83
Non-Degree Seeking	499	316	815
Total	5,307	914	6,221

¹ Includes 1st Major only² For previous years, UED are included in Undeclared

Source: IR Official DHE Fall Files

Academic Achievement/Learning Outcomes

Grade Distribution of First-time, Full-time, Degree-seeking Freshmen, Fall 2012



Total Number of Freshmen = 784

Source: IR Official DHE Fall Files

First-time, Full-time Freshmen Retention and Graduation Rates

Entering Class	Initial Cohort	After 1st Year		After 2nd Year		After 3rd Year		After 4th Year		After 5th Year		After 6th Year		After 7th Year		After 8th Year	
		N	%	N	%	N	%	N	%	N	%	N	%	N	%	N	%
2004	626																
Continued		470	75.1	371	59.3	341	54.6 ¹	168	26.9	49	7.8	29	4.6	15	2.4 ²	13	2.1
Dropout (cumulative)			24.9		40.7		44.3		47.8		50.7		50.2		50.0		49.4
Graduated (cumulative)						7	1.1	158	25.3	259	41.4	282	45.1	297	47.6	303	48.6
2005	641																
Continued		473	73.9 ³	377	59.0 ⁴	346	54.1	161	25.2	52	8.1	22	3.4	14	2.2		
Dropout (cumulative)			26.1		41.0		45.2		46.3		48.9		49.7		48.2		
Graduated (cumulative)						4	0.6	182	28.5	275	43.0	300	46.9	317	49.6		
2006	668																
Continued		508	76.0	430	64.4	388	58.1	151	22.6 ⁵	58	8.7	25	3.7				
Dropout (cumulative)			24.0		35.6		41.0		44.9		44.8		45.3				
Graduated (cumulative)						6	0.9	217	32.5	310	46.5	340	51.0				
2007	678																
Continued		513	75.7	441	65.0	396	58.4	150	22.1	68	10.0						
Dropout (cumulative)			24.3		35.0		40.9		43.7		45.3						
Graduated (cumulative)						5	0.7	232	34.2	303	44.7						
2008	654																
Continued		501	76.6	425	65.0	389	59.6 ⁶	158	24.2								
Dropout (cumulative)			23.4		35.0		39.8		44.6								
Graduated (cumulative)						4	0.6	204	31.2								
2009	693																
Continued		521	75.2	458	66.1	415	59.9										
Dropout (cumulative)			24.8		33.9		39.5										
Graduated (cumulative)						4	0.6										
2010	809																
Continued		644	79.8 ⁷	543	67.3												
Dropout (cumulative)			20.2		32.7												
Graduated (cumulative)																	
2011	790																
Continued		617	78.1														
Dropout (cumulative)			21.9														
Graduated (cumulative)																	

Adjusted cohorts due to deceased students: ¹625, ²624, ³640, ⁴639, ⁵667, ⁶653, ⁷807

Source: WSU Colleague Data System

Degrees Conferred by CIP Code Category, FY 2012

<i>CIP Code Category</i>	<i>Bachelor</i>	<i>Post-Bacc. Certificate</i>	<i>Master</i>	<i>Post-Masters Certificate</i>
Adult Health Nurse/Nursing	24			
Biology Teacher Education		4		
Biology/Biological Sciences, General	36			
Biotechnology	10		12	
Business Administration and Management, General	193		9	
Chemistry Teacher Education		4		
Chemistry, General	19			
Clinical Nurse Specialist			7	
Communication Sciences and Disorders, General	28			
Community Health Services/Liaison/Counseling	21		8	
Computer and Information Sciences, General	24			
Criminal Justice/Safety Studies	76			
Early Childhood Education and Teaching	17		5	
Economics, General	11			
Education, General		31	17	
Educational Leadership and Administration, General			13	
Elementary Education and Teaching	20	22	7	
Elementary and Middle School Administration/Principalship		6		
English Language and Literature, General	25		6	
English/Language Arts Teacher Education		14		
Foreign Language Teacher Education		4		
Geography	10			
Health Professions and Related Clinical Sciences, Other	22			
Health Services/Allied Health/Health Sciences, General		1		
Health/Health Care Administration/Management			2	
History Teacher Education		3		
History, General	32		10	
Junior High/Intermediate/Middle School Education & Teaching			4	
Kindergarten/Preschool Education and Teaching		6		
Mass Communication/Media Studies	23			
Mathematics Teacher Education		11		
Mathematics, General	8			
Non-Profit/Public/Organizational Management			16	
Nursing- Registered Nurse Training (RN, ASN, BSN, MSN)	41			
Occupational Therapy/Therapist	17		27	
Physical Sciences	10			
Psychology, General	104			
Reading Teacher Education		8	5	
School Psychology			9	8
Science Teacher Education/General Science Teacher Education		2		
Secondary Education and Teaching			1	
Social Studies Teacher Education		8		
Sociology	20			
Spanish Language And Literature	9		10	
Special Education and Teaching, Other		27		
Speech Communication and Rhetoric	38			
Speech-Language Pathology/Pathologist			27	
Teacher Education, Multiple Levels		18		
Urban Studies/Affairs	16			
Visual and Performing Arts	7			
Total	861	169	195	8

Source: IR Official DHE Degrees Conferred Files

Personnel Profile

Employees/Staff, Fall 2012*

SOC Category	Total									Male	Female
	Nonresident Alien	Hispanic	American Indian/ Alaska Native	Asian	Black	Native Hawaiian/ Pacific Islander	White	Two or more races	Unknown		
Library & Instructional Support Occupations	0	0	0	0	0	0	5	0	0	1	4
Management Occupations	0	5	0	2	6	0	90	0	0	33	70
Business & Financial Operations Occupations	0	1	0	0	0	0	12	0	0	8	5
Computer, Engineering & Science Occupations	0	3	0	1	0	0	19	0	0	16	7
Community Service, Legal, Arts & Media Occupations	0	0	0	1	0	0	2	0	0	1	2
Healthcare Practitioners & Technical Support	0	0	0	0	0	0	4	0	0	2	2
Service Occupations	0	12	0	0	3	0	47	0	2	55	9
Office & Administrative Support Occupations	0	5	0	2	4	0	93	0	1	12	93
Natural Resources, Construction & Maintenance Occupations	0	0	0	0	0	0	12	0	0	12	0
Production, Transportation & Material Moving Occupations	0	0	0	0	0	0	3	0	0	2	1
Total	0	26	0	6	13	0	287	0	3	142	193

SOC Category	Full-Time									Male	Female
	Nonresident Alien	Hispanic	American Indian/ Alaska Native	Asian	Black	Native Hawaiian/ Pacific Islander	White	Two or more races	Unknown		
Library & Instructional Support Occupations	0	0	0	0	0	0	5	0	0	1	4
Management Occupations	0	5	0	2	6	0	88	0	0	32	69
Business & Financial Operations Occupations	0	1	0	0	0	0	12	0	0	8	5
Computer, Engineering & Science Occupations	0	3	0	1	0	0	18	0	0	15	7
Community Service, Legal, Arts & Media Occupations	0	0	0	1	0	0	1	0	0	1	1
Healthcare Practitioners & Technical Support	0	0	0	0	0	0	4	0	0	2	2
Service Occupations	0	12	0	0	3	0	47	0	2	55	9
Office & Administrative Support Occupations	0	5	0	2	4	0	84	0	1	12	84
Natural Resources, Construction & Maintenance Occupations	0	0	0	0	0	0	12	0	0	12	0
Production, Transportation & Material Moving Occupations	0	0	0	0	0	0	3	0	0	2	1
Total	0	26	0	6	13	0	274	0	3	140	182

*Due to changes in IPEDS reporting, new category codes (SOC) have replaced previously used EEO codes.

Source: IR Official IPEDS HR Files

Employees/Staff, Fall 2012*

SOC Category	Part-Time									Male	Female
	Nonresident Alien	Hispanic	American Indian/ Alaska Native	Asian	Black	Native Hawaiian/ Pacific Islander	White	Two or more races	Unknown		
Library & Instructional Support Occupations	0	0	0	0	0	0	0	0	0	0	0
Management Occupations	0	0	0	0	0	0	2	0	0	1	1
Business & Financial Operations Occupations	0	0	0	0	0	0	0	0	0	0	0
Computer, Engineering & Science Occupations	0	0	0	0	0	0	1	0	0	0	1
Community Service, Legal, Arts & Media Occupations	0	0	0	0	0	0	1	0	0	0	1
Healthcare Practitioners & Technical Support	0	0	0	0	0	0	0	0	0	0	0
Service Occupations	0	0	0	0	0	0	0	0	0	0	0
Office & Administrative Support Occupations	0	0	0	0	0	0	9	0	0	0	9
Natural Resources, Construction & Maintenance Occupations	0	0	0	0	0	0	0	0	0	0	0
Production, Transportation & Material Moving Occupations	0	0	0	0	0	0	0	0	0	0	0
Total	0	0	0	0	0	0	13	0	0	1	12

*Due to changes in IPEDS reporting, new category codes (SOC) have replaced previously used EEO codes.

Source: IR Official IPEDS HR Files

Faculty by Institution of Highest Degree, Fall 2012

<i>Awarding Institution</i>	<i>Graduates</i>	<i>Awarding Institution</i>	<i>Graduates</i>
University of Massachusetts-Amherst	18	Mass College of Liberal Arts	1
Boston University	14	Massachusetts Institute of Technology	1
University of Connecticut	10	McGill University	1
Clark University	8	Moscow University	1
University of California	8	New Hampshire College	1
Worcester State College	6	New York University	1
Brandeis University	4	Nichols College	1
Harvard University	4	North Carolina State University	1
Nova College	4	Northwestern University	1
University of Rhode Island	4	Ohio State University	1
Assumption College	3	Purdue University	1
Boston College	3	Rhode Island School of Design	1
Indiana University	3	Rice University	1
University of Michigan	3	Rivier College	1
University of Minnesota-Minneapolis	3	Rochester University-University College	1
University of New Hampshire	3	Simmons College	1
Colorado State University	2	Southern Illinois University	1
Columbia University-Columbia College	2	Suffolk University	1
Indiana University-Pennsylvania	2	Texas A&M University	1
Michigan State University	2	Thomas Jefferson University	1
Northeastern University	2	Union College	1
Rutgers University	2	University of Alabama	1
State University New York-Albany	2	University of Arizona	1
State University New York-Buffalo	2	University of Cincinnati	1
Temple University	2	University of Colorado	1
University of Georgia	2	University of Iowa	1
University of Maryland	2	University of Kansas	1
University of Massachusetts-Boston	2	University of Liverpool	1
University of Massachusetts-Lowell	2	University of Maryland	1
Vanderbilt University	2	University of Massachusetts Memorial Medical Group	1
Worcester Polytechnic Institute	2	University of Miami	1
American University	1	University of Minnesota	1
Anna Maria College	1	University of Mississippi	1
Arizona State University	1	University of North Carolina	1
Brown University	1	University of Notre Dame	1
California School of Professional Psychology	1	University of Oklahoma	1
Carnegie-Mellon University	1	University of Oregon	1
Central Michigan University	1	University of Pennsylvania	1
City University of New York	1	University of Pretoria	1
Clark Atlanta University	1	University of South Carolina	1
College of William and Mary	1	University of Texas-Austin	1
Cornell University	1	University of Vermont	1
Eastman School of Music	1	University of Virginia	1
Emerson College	1	University of Washington	1
Fitchburg State College	1	University of Waterloo	1
Florida International University	1	University of Wisconsin	1
Florida State University	1	Washington State University	1
Georgetown University	1	Wesleyan University	1
Kent State University	1	Yale University	1
		Total	195

Source: IR Official DHE HR Files

Full-time Faculty by Department and Rank, Fall 2012

<i>Department</i>	<i>Professor</i>	<i>Associate Professor</i>	<i>Assistant Professor</i>	<i>Instructor</i>	<i>Total</i>
Biology	7	3	3	0	13
Business and Economics	11	3	5	1	20
Chemistry	3	2	4	0	9
Communication	5	2	1	1	9
Communication Sciences & Disorders	2	3	1	0	6
Computer Science	3	1	0	0	4
Criminal Justice	0	2	5	0	7
Education	5	3	5	0	13
English	6	4	3	0	13
Health Science	0	3	1	0	4
History & Political Science	1	7	5	0	13
Mathematics	1	5	2	3	11
Nursing	2	1	2	8	13
Occupational Therapy	3	0	3	0	6
Philosophy	4	0	0	1	5
Physical & Earth Sciences	0	5	4	0	9
Psychology	5	4	6	0	15
Sociology	0	1	3	1	5
Urban Studies	3	1	2	0	6
Visual & Performing Arts	5	3	2	0	10
World Languages	3	0	1	0	4
Total	69	53	58	15	195

Source: IR Official DHE HR Files

Full-time Faculty by Ethnicity and Gender, Fall 2012

<i>Ethnicity</i>	<i>Male</i>	<i>Female</i>	<i>Total</i>
Non-Resident Alien	0	0	0
Hispanic	5	4	9
American Indian/Alaskan Native	0	0	0
Asian	6	13	19
Black	6	4	10
Native Hawaiian/Pacific Islander	0	0	0
White	64	92	156
Two or more races	0	0	0
Race/ethnicity unknown	0	1	1
Total	81	114	195

Full-time Faculty by Gender and Tenure, Fall 2012

<i>Tenure Status</i>	<i>Male</i>	<i>Female</i>	<i>Total</i>
Tenured	58	70	128
On tenure track	21	32	53
Not on tenure track	2	12	14
Total	81	114	195

Full-time Faculty by Rank and Gender, Fall 2012

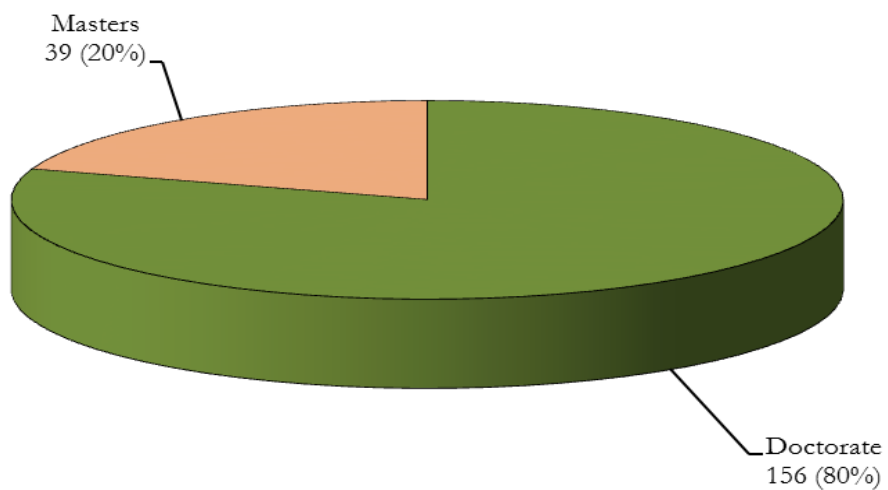
<i>Rank</i>	<i>Male</i>	<i>Female</i>	<i>Total</i>
Professor	26	43	69
Associate Professor	32	21	53
Assistant Professor	21	37	58
Instructor	2	13	15
Total	81	114	195

Full-time Faculty by Age Range and Rank, Fall 2012

<i>Age Range</i>	<i>Professor</i>	<i>Associate Professor</i>	<i>Assistant Professor</i>	<i>Instructor</i>	<i>Total</i>
Under 30	0	0	1	2	3
30 - 39	0	4	30	1	35
40 - 49	14	15	16	4	49
50 - 59	22	9	4	5	40
60 - 69	24	15	7	3	49
70 and over	9	10	0	0	19
Total	69	53	58	15	195

Source: IR Official IPEDS HR Files

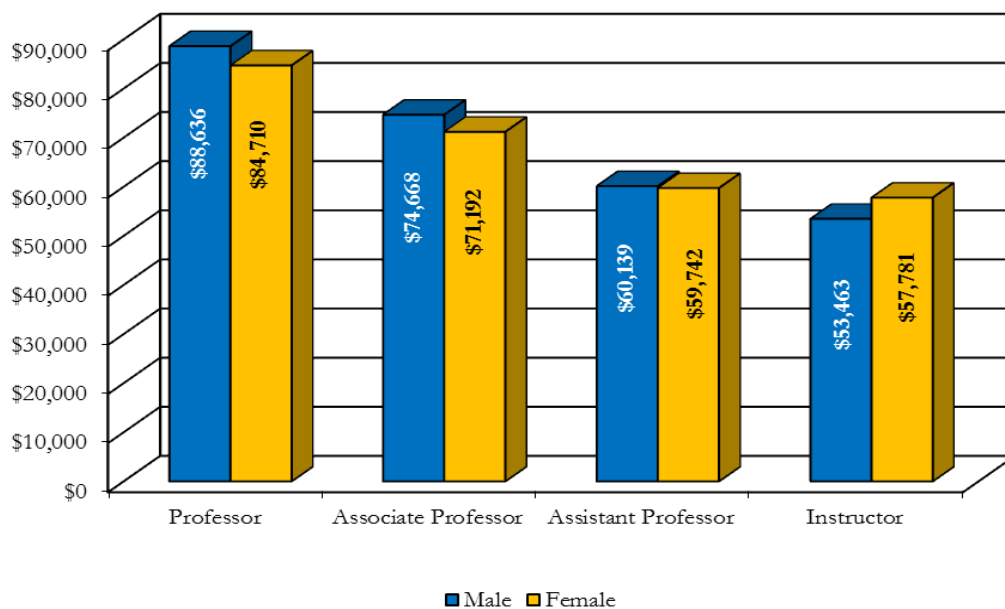
Full-time Faculty by Highest Degree Earned, Fall 2012



Source: IR Official IPEDS HR Files

Average Salaries of Full-time Faculty by Rank and Gender, Fall 2012

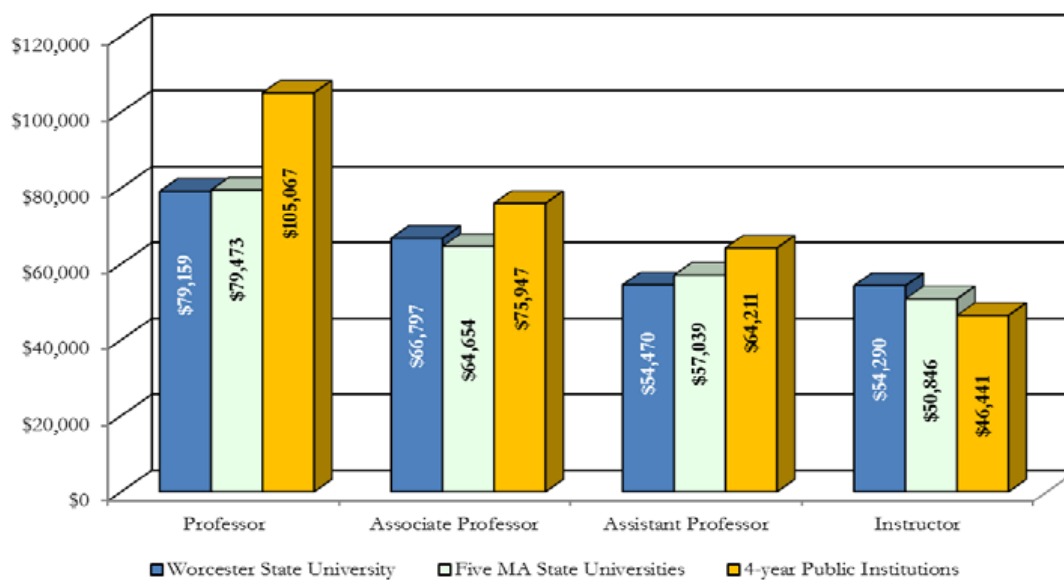
<i>Rank</i>	<i>Male</i>	<i>Female</i>	<i>Total</i>
Professor	\$88,636	\$84,710	\$86,189
Associate Professor	\$74,668	\$71,192	\$73,291
Assistant Professor	\$60,139	\$59,742	\$59,886
Instructor	\$53,463	\$57,781	\$57,205



Source: IR Official IPEDS HR Files

Average Faculty Salaries Comparison, AY 2010-2011*

<i>Rank</i>	<i>Worcester State University</i>	<i>Five MA State Universities</i>	<i>4-year Public Institutions</i>
Professor	\$79,159	\$79,473	\$105,067
Associate Professor	\$66,797	\$64,654	\$75,947
Assistant Professor	\$54,470	\$57,039	\$64,211
Instructor	\$54,290	\$50,846	\$46,441

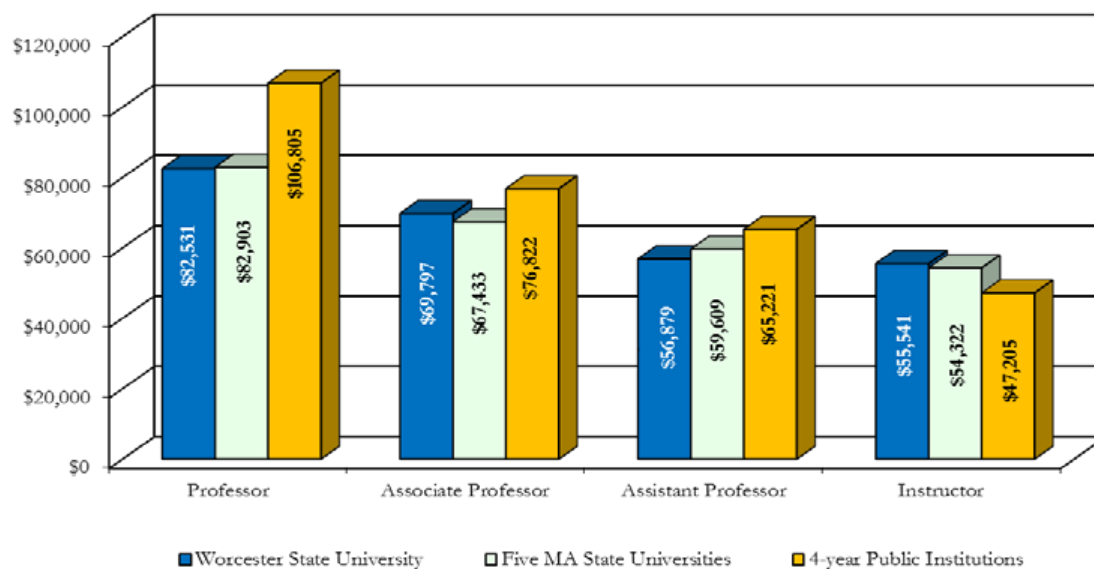


*Five MA State Universities used for comparison are as follows: Bridgewater State University, Fitchburg State University, Framingham State University, Salem State University, Westfield State University

Source: IR Official IPEDS Salary Files & IPEDS NCES

Average Faculty Salaries Comparison, AY 2011-2012*

<i>Rank</i>	<i>Worcester State University</i>	<i>Five MA State Universities</i>	<i>4-year Public Institutions</i>
Professor	\$82,531	\$82,903	\$106,805
Associate Professor	\$69,797	\$67,433	\$76,822
Assistant Professor	\$56,879	\$59,609	\$65,221
Instructor	\$55,541	\$54,322	\$47,205



*Five MA State Universities used for comparison are as follows: Bridgewater State University, Fitchburg State University, Framingham State University, Salem State University, Westfield State University

Source: IR Official IPEDS Salary Files & IPEDS NCES

Library Information

Library Holdings, FY 2008-2012

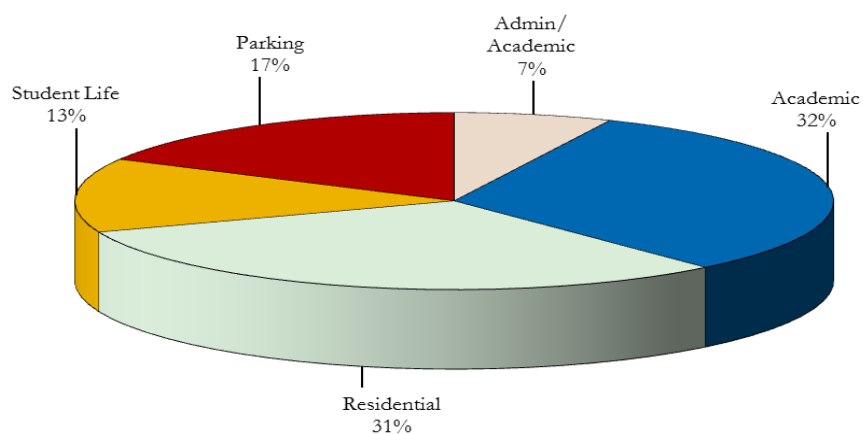
<i>Category</i>	<i>FY 2012</i>
Total Print Volumes	204,971
Electronic On-line Journal Titles	42,326
Electronic On-line Newspaper Titles	1,227
Electronic On-line Periodical Subscriptions	186
Electronic On-line Books	13,225
Electronic On-line Research Databases	91
Paper Periodical Subscriptions	310
Microfilm Titles	588
Current Microform Subscriptions	6
Media (DVDs, CD-ROM and Videos) Titles	4,267

Source: NCES Library Reports

Facilities Information

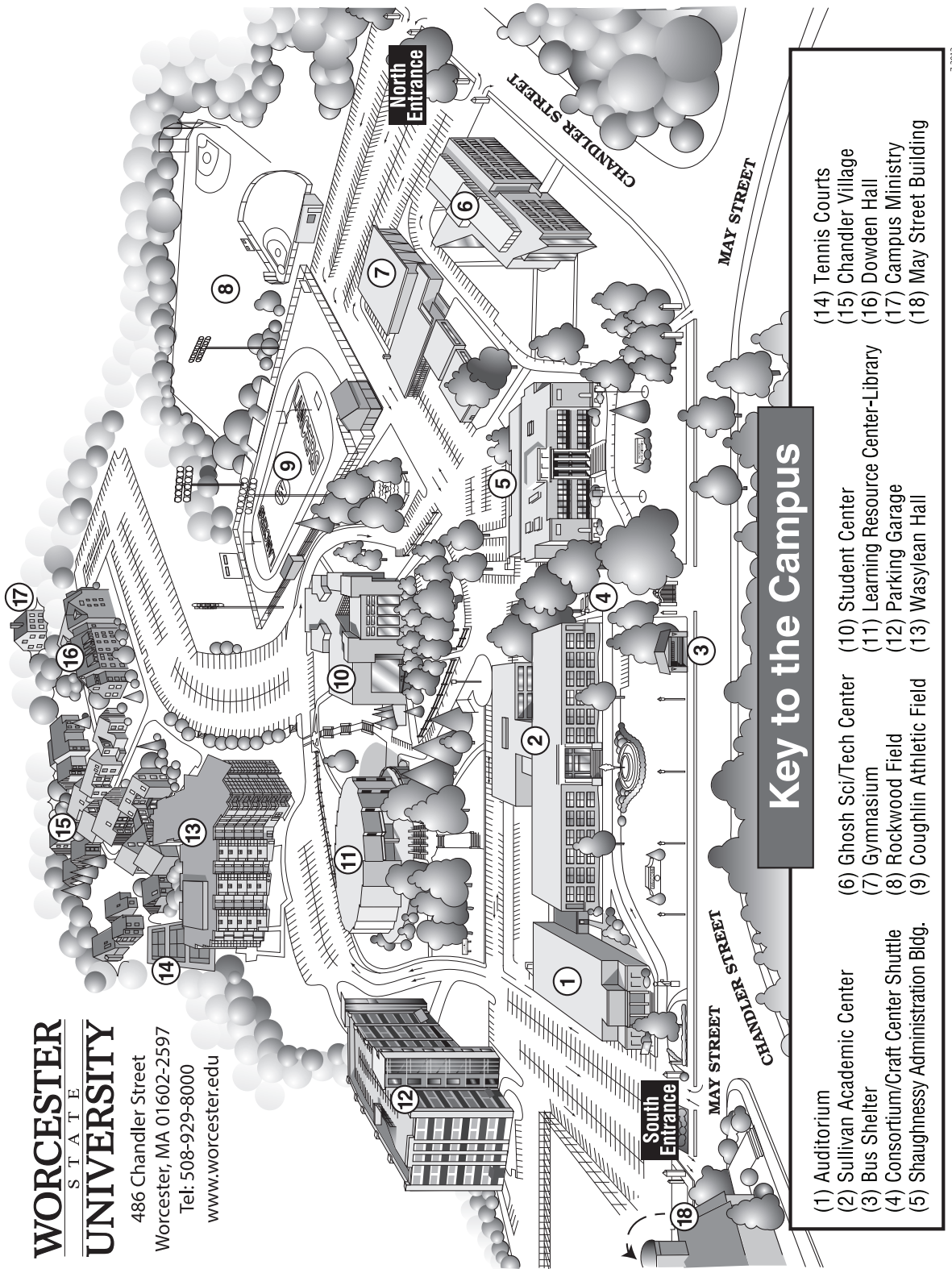
Physical Plant Facilities, Fall 2012

	<i>Building Name</i>	<i>Primary Use</i>	<i>Gross sq. ft.</i>	<i>Assignable sq. ft.</i>	<i>Year</i>
1.	Administration	Administrative	67,066	37,695	1932
2.	Learning Resource Center	Library, Classrooms	113,335	72,815	1968
3.	Sullivan Academic Center	Academic	110,690	72,725	1965
4.	Science Tech Center	Academic	97,300	71,072	2000
5.	Student Center	Student Affairs, Dining	71,416	46,430	1978
6.	Gymnasium	Athletics, Art	65,676	41,155	1958
7.	17 Candlewood Street	Campus Ministry	1,200	960	1927
8.	Chandler Village	Housing	103,560	79,490	1973
9.	Dowden Hall	Housing	98,555	56,910	1990
10.	Wasylean Hall	Housing	109,000	70,510	2004
11.	Parking Garage	Parking	174,032	166,592	2007



Source: Office of Facilities

Campus Map



7-2012

Source: Printing & Publications

University Advancement

Foundation Board of Directors 2012-2013

Gregg H. Rosen '83, *President*
 Craig A. Bovaird '77, *Vice President*
 Mary C. Ritter, *Vice President*
 Edward L. Sherr, *Treasurer*
 Kathleen Eichelroth, CPA, *Assistant Treasurer*
 Thomas M. McNamara '94, *Clerk*
 George H. Albro '65, M.Ed. '68
 Mary K. Alexander, Ed.D.
 David E. Bedard '74
 Keith E. Blanchette '98, CPA
 Jean M. Borgatti, Ph.D.
 John P. Brissette '88
 Derek S. Brindisi '99
 Marion Calbro '14
 Matthew Cote
 Leslie K. Cutler
 Jill C. Dagilis '78
 Julia Dvorko, Ph.D.
 Mary Burke Fallon
 James D. Glickman
 Lillian R. Goodman, Ed.D.
 Maryanne H. Hammond '69, M.Ed. '72
 Kimberly M. Harmon, R.N. '95
 Charlotte Z. Klein '75
 Dorothy J. Manning, M.Ed. '88
 Daniel J. Mastrototaro
 Rosanne Sullivan Matulaitis '88
 Kerri Aleksiewicz Melley
 Suzanne Singh Nebelung, M.Ed. '00
 William F. O'Neil, M.Ed. '63, Ed.D.
 Alan O. Osmolowski, '91, CPA
 R. David Richer
 Robert J. Spain '78
 George W. Tetler III
 Richard E. Thomas
 Steven J. Ward '76
 Randal D. Webber '91

Alumni Association's Advisory Board 2012-2013

Vincent J. Matulaitis '66, *President*
 Kristina M. Jackson '93, *Vice President*
 Patricia A. Pennucci '62, M.Ed. '67, *Secretary*
 Margaret C. Farrey '54, M.Ed. '78, *Executive
Committee*
 John J. Brown III '02, *Executive Committee*

Directors 2012-2013

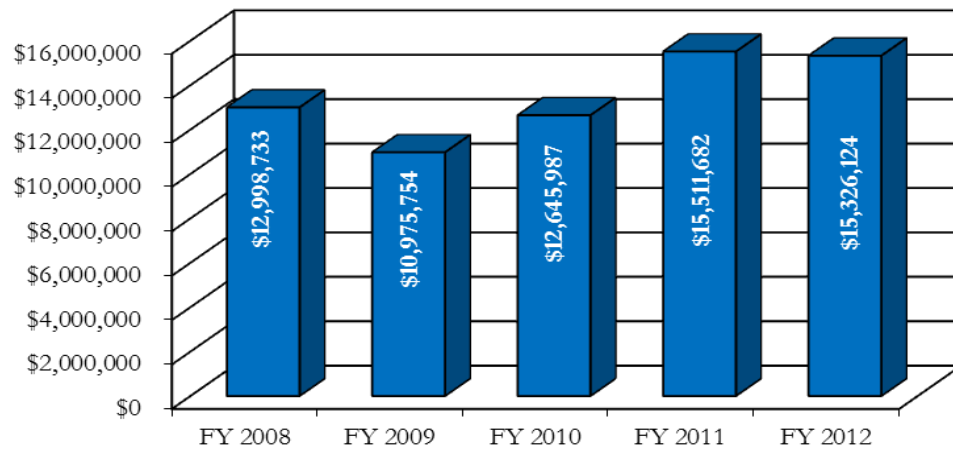
John A. Ahern '80
 Michael J. Borowiec '10
 Derek S. Brindisi '99
 Joseph C. Deeley '56, M.Ed. '58, Colonel,
 United States Air Force, Retired
 Hugh F. Donohue '70
 Danielle M. Horn '03
 Joshua L. Katz '06
 Cathleen M. Liberty '08
 Michael J. Mills '72
 Deirdre A. Olson O'Connor '71
 Amanda M. Riik '02
 Elaine G. Tateronis '63, M.Ed. '74, Ed.D.
 Jacqueline M. Trotta '69, M.Ed. '74
 Nicole E. Valentine '96

Maryanne M. Hammond '69, M.Ed. '72,
Alumni Representative to the Board of Trustees

Trevor Sansoucy '13, *SGA President/ Student
Representative*

Nicole Losavio, *Staff Liaison*
 Karen Sharpe, *Staff Liaison*

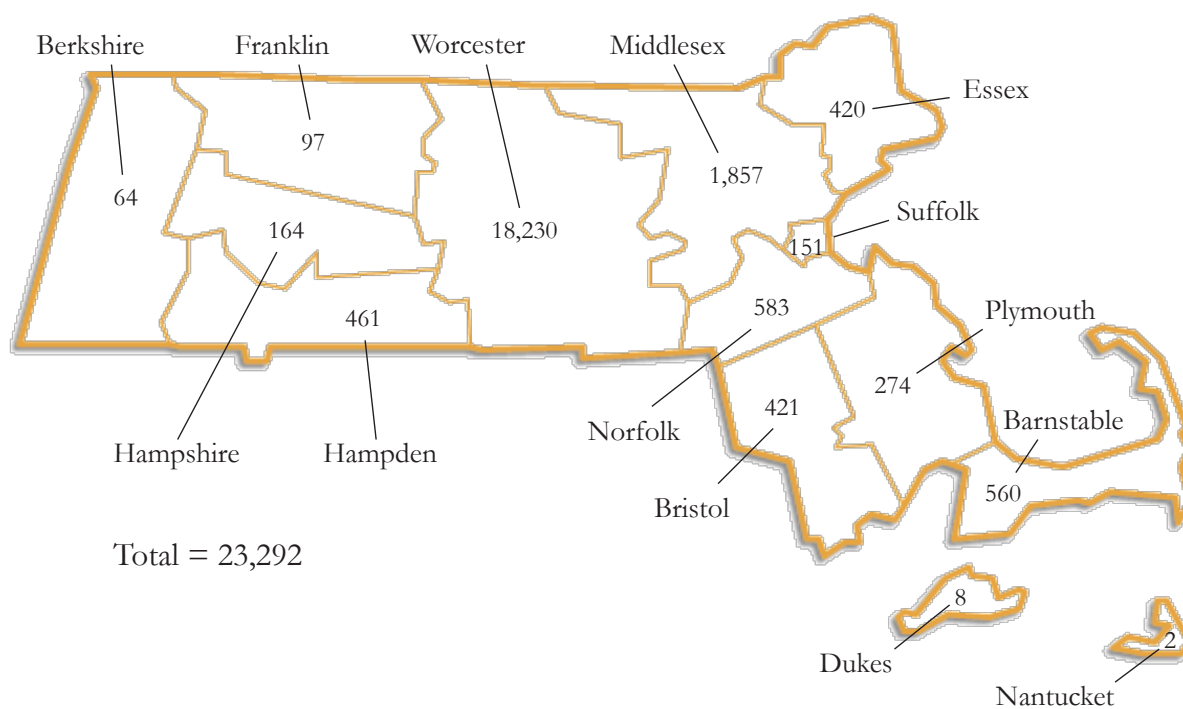
Total Market Value of Funds Under Management¹, FY 2008-FY 2012



¹Total Net Asset Per Official Audit

Source: Office of University Advancement

Alumni by Massachusetts County of Residence, 2012

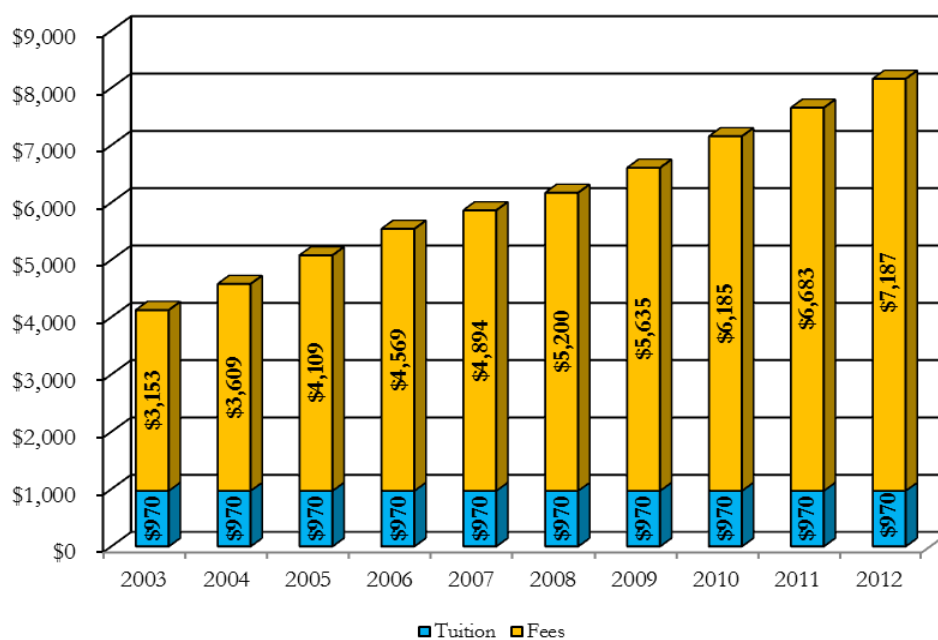


Source: Office of University Advancement

Financial Information

Tuition and Fees per Academic Year, 2003-2012

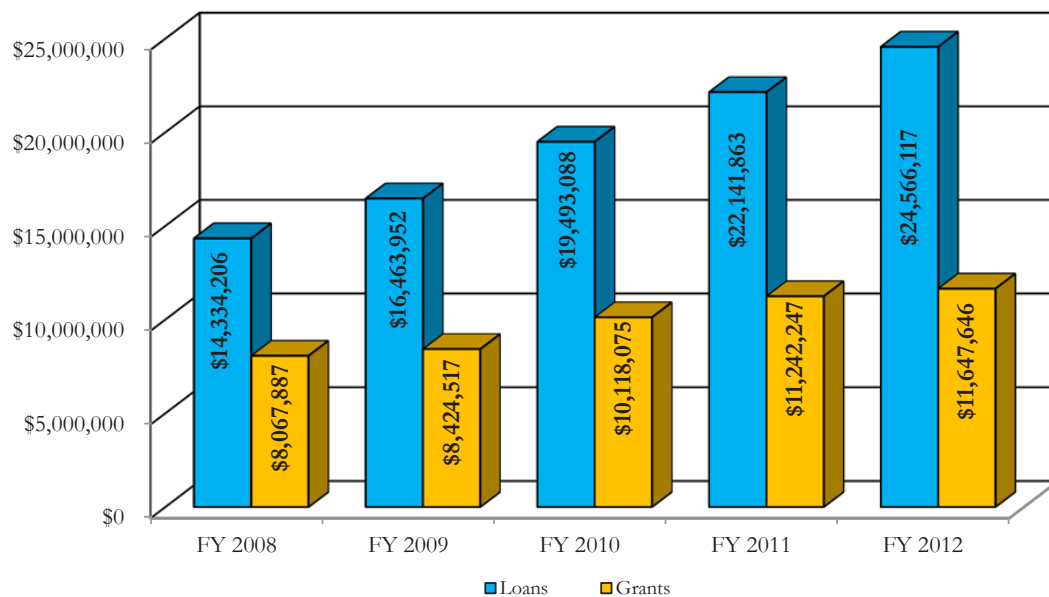
	<i>AY</i> 2003	<i>AY</i> 2004	<i>AY</i> 2005	<i>AY</i> 2006	<i>AY</i> 2007	<i>AY</i> 2008	<i>AY</i> 2009	<i>AY</i> 2010	<i>AY</i> 2011	<i>AY</i> 2012
Tuition	\$970	\$970	\$970	\$970	\$970	\$970	\$970	\$970	\$970	\$970
Fees	\$3,153	\$3,609	\$4,109	\$4,569	\$4,894	\$5,200	\$5,635	\$6,185	\$6,683	\$7,187
Total	\$4,123	\$4,579	\$5,079	\$5,539	\$5,864	\$6,170	\$6,605	\$7,155	\$7,653	\$8,157



Source: Office of Administration and Finance

Financial Aid Awards, FY 2008-FY 2012

	<i>FY 2008</i>	<i>FY 2009</i>	<i>FY 2010</i>	<i>FY 2011</i>	<i>FY 2012</i>
Loans	\$14,334,206	\$16,463,952	\$19,493,088	\$22,141,863	\$24,566,117
Grants	\$8,067,887	\$8,424,517	\$10,118,075	\$11,242,247	\$11,647,646
Total	\$22,402,093	\$24,888,469	\$29,611,163	\$33,384,110	\$36,213,763



Source: Office of Financial Aid

Revenues and Expenditures, FY 2010-FY 2012

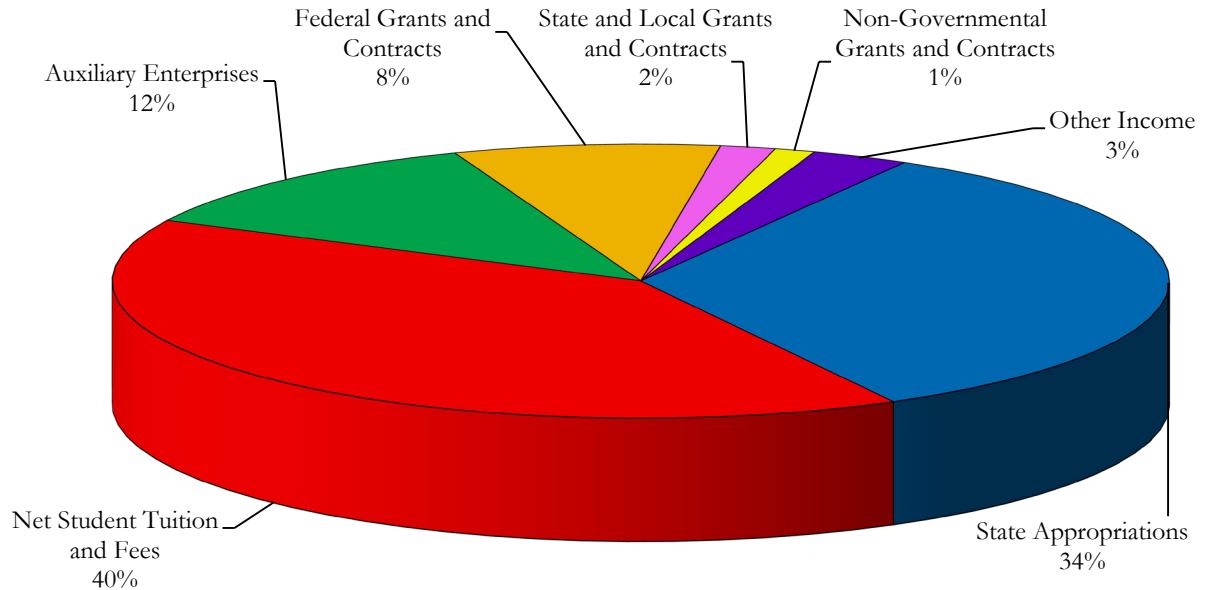
REVENUES	FY 2012	FY 2011	FY 2010
Operating Revenues			
Student Tuition and fees	\$ 38,714,218	\$ 36,322,718	\$ 33,228,317
Less: Scholarship discounts and allowance	8,447,639	7,347,390	6,464,179
Net student tuition and fees	30,266,579	28,975,328	26,764,138
Federal grants and contracts	6,134,752	10,867,450	8,586,193
State and local grants and contracts	1,269,367	944,511	1,296,211
Nongovernmental grants and contracts	928,886	910,612	533,196
Auxiliary enterprises	9,017,786	8,277,300	6,742,819
Other operating revenues	1,197,025	1,127,693	1,217,214
Total operating revenues	<u>\$ 48,814,395</u>	<u>\$ 51,102,894</u>	<u>\$ 45,159,771</u>
EXPENSES			
Operating expenses			
Instruction	\$ 29,123,787	\$ 28,317,953	\$ 26,205,866
Public service	609,273	466,426	491,683
Academic support	6,214,371	5,864,229	5,215,746
Student services	6,578,675	6,115,465	5,925,693
Institutional support	10,016,600	9,339,162	8,025,540
Operation and maintenance of plant	7,784,839	8,416,670	7,412,106
Scholarship	596,114	1,267,657	1,309,597
Depreciation	4,402,075	4,296,608	3,389,333
Debt service	580,577	591,101	601,318
Auxiliary enterprises	8,082,112	8,127,535	6,355,184
Total operating expenses	<u>\$ 73,988,423</u>	<u>\$ 72,802,806</u>	<u>\$ 64,932,066</u>
Operating loss	<u>\$ (25,174,028)</u>	<u>\$ (21,698,912)</u>	<u>\$ (19,772,295)</u>
NONOPERATING REVENUES			
State appropriations	\$ 25,412,179	\$ 25,931,430	\$ 21,428,433
Interest and investment income	1,036,814	307,776	606,154
Other nonoperating revenues(expenses)	20,811	3,241	1,474
Net nonoperating revenues	<u>\$ 26,469,804</u>	<u>\$ 26,242,447</u>	<u>\$ 22,036,061</u>
Income before other revenues,expenses, gains or losses	<u>\$ 1,295,776</u>	<u>\$ 4,543,535</u>	<u>\$ 2,263,766</u>
Capital appropriations	17,078	102,000	488,046
Increase in net assets	<u>\$ 1,312,854</u>	<u>\$ 4,645,535</u>	<u>\$ 2,751,812</u>
NET ASSETS			
Beginning of year	87,162,957	\$ 82,517,422	\$ 79,765,610
End of year	<u>\$ 88,475,811</u>	<u>\$ 87,162,957</u>	<u>\$ 82,517,422</u>

Source: Financial Statements year ended June 30, 2012, 2011 and 2010, and Independent Auditor's Report

Fund Revenues by Source - FY 2012

REVENUES

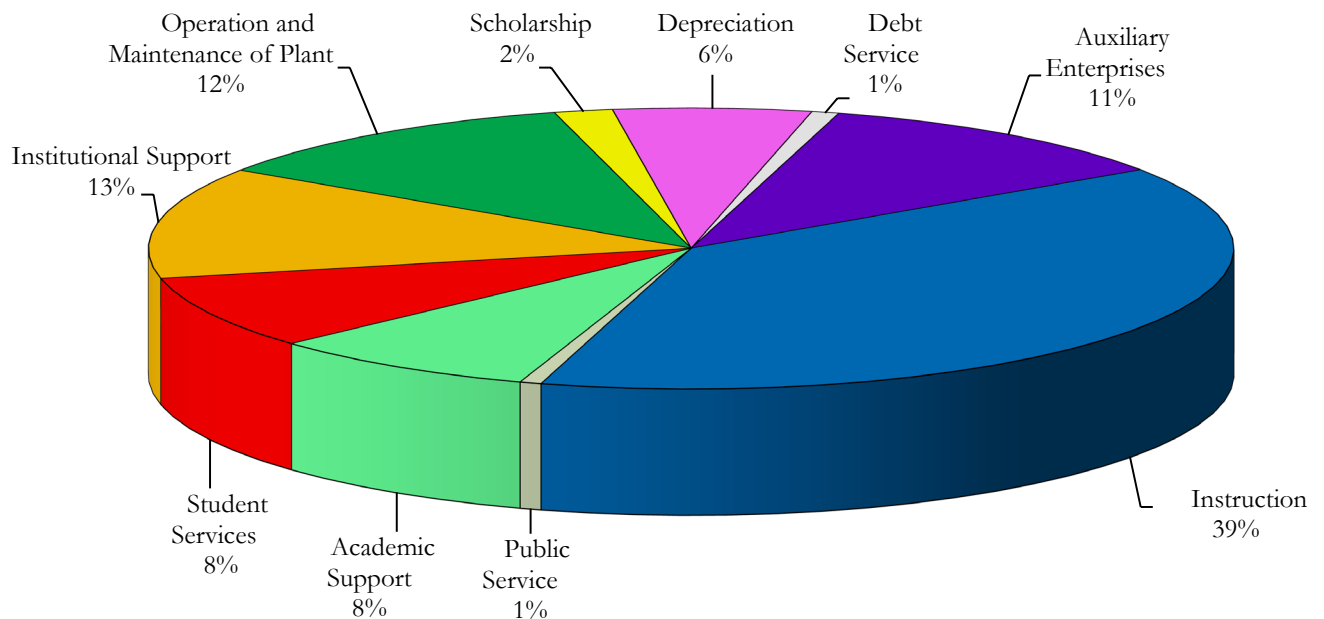
Total = \$75,284,199



Fund Expenditures by Source - FY 2012

EXPENSES

Total = \$72,802,806



Source: Financial Statements year ended June 30, 2012, 2011 and 2010, and Independent Auditor's Report

Office of Institutional Research

Phone: (508) 929-8121

Fax: (508) 929-8185



Change the Way the World Works