

WSU BY THE NUMBERS:

FACT BOOK 2011



Cover Photo: Kalyan K. Ghosh Center for Science and Technology

WSU by the Numbers:

Fact Book 2011



Office of Institutional Research
Worcester State University
486 Chandler Street
Worcester, Massachusetts 01602-2597
508-929-8121

Prepared by:
Kristina Rearick, Ed.D., Database Coordinator/Research Analyst
Kenneth Smith, Director of Institutional Research

Worcester State University is an equal employment/education opportunity institution.

Table of Contents

INTRODUCTION

| | |
|-------------------------------------|---|
| President's Message | 1 |
| Board and Administration | 2 |
| Board of Trustees | 2 |
| Standing Committees 2011-2012 | 2 |
| Campus Administration | 3 |
| Department Chairs, Fall 2011 | 4 |
| Organizational Chart | 5 |

GENERAL INFORMATION

| | |
|--|----|
| Worcester State University <i>SNAPSHOT</i> , Fall 2011 | 11 |
| Brief History of WSU | 12 |
| Core Values | 13 |
| Vision | 13 |
| Mission | 13 |
| Strategic Priorities, FY 2010-2014 | 14 |
| Accreditation | 15 |

STUDENT PROFILE

| | |
|--|----|
| Longitudinal Enrollment, Fall 2002-Fall 2011 | 17 |
| Students by Country of Residence, Fall 2011 | 18 |
| Students by State of Residence, Fall 2011 | 19 |
| Students by Massachusetts County of Residence, Fall 2011 | 20 |
| Age of Degree-seeking, First-time Freshmen, Fall 2011 | 21 |
| High School GPA of Degree-seeking, First-time Freshmen, Fall 2011 | 21 |
| SAT Scores of Degree-seeking, First-time Freshmen, Fall 2011 | 22 |
| Average Combined SAT, Fall 2011 | 22 |
| Gender and Ethnicity of Degree-seeking, First-time Freshmen, Fall 2011 | 23 |
| Age of New Degree-seeking, Transfer Students, Fall 2011 | 24 |
| Ethnicity of New Degree-seeking, Transfer Students, Fall 2011 | 24 |
| Transfer Institutions, Fall 2011 | 25 |
| Majors of New Degree-seeking, Transfer Students, Fall 2011 | 26 |
| Ethnicity of Full-time Students, Fall 2011 | 27 |
| Ethnicity of Part-time Students, Fall 2011 | 27 |
| Gender of Full-time Students, Fall 2011 | 28 |
| Gender of Part-time Students, Fall 2011 | 28 |
| Total Enrollment by Student Classification, Fall 2011 | 29 |
| On-Campus Housing by State of Residence and Class, Fall 2011 | 30 |

INSTRUCTIONAL PROGRAMS

| | |
|---|----|
| Student Enrollment by Major and Student Classification, Fall 2011 | 31 |
|---|----|

ACADEMIC ACHIEVEMENT/LEARNING OUTCOMES

| | |
|---|----|
| Grade Distribution of First-time, Full-time, Degree-seeking Freshmen, Fall 2011 | 33 |
| First-time, Full-time Freshmen Retention and Graduation Rates | 34 |
| Degrees Conferred by CIP Code Category, FY 2011 | 35 |

PERSONNEL PROFILE

| | |
|---|----|
| Employees/Staff, Fall 2011 | 37 |
| Faculty by Institution of Highest Degree, Fall 2011 | 38 |
| Full-time Faculty by Department and Rank, Fall 2011 | 39 |
| Full-time Faculty by Gender and Ethnicity, Fall 2011 | 40 |
| Full-time Faculty by Gender and Tenure, Fall 2011 | 40 |
| Full-time Faculty by Gender and Rank, Fall 2011 | 40 |
| Full-time Faculty by Age Range and Rank, Fall 2011 | 40 |
| Full-time Faculty by Highest Degree Earned, Fall 2011 | 41 |
| Average Salaries of Full-time Faculty by Rank and Gender, Fall 2011 | 42 |
| Average Faculty Salaries Comparison, AY 2009-2010 | 43 |

LIBRARY INFORMATION

| | |
|--------------------------------------|----|
| Library Holdings, FY 2007-2011 | 45 |
|--------------------------------------|----|

FACILITIES INFORMATION

| | |
|--|----|
| Physical Plant Facilities, Fall 2011 | 47 |
| Campus Map | 48 |

INSTITUTIONAL ADVANCEMENT

| | |
|--|----|
| Foundation Board of Directors, Alumni Board and Directors, 2011-2012 | 49 |
| Total Market Value of Funds Under Management, FY 2007-FY 2011 | 50 |
| Alumni by Massachusetts County of Residence, 2011 | 51 |

FINANCIAL INFORMATION

| | |
|---|----|
| Tuition and Fees per Academic Year, 2002-2011 | 53 |
| Financial Aid Awards, FY 2007-FY 2011 | 54 |
| Revenues and Expenditures, FY 2009-FY 2011 | 55 |
| Fund Revenues by Source – FY 2011 | 56 |
| Fund Expenditures by Functions – FY 2011 | 56 |

Introduction

President's Message

A Message from Barry M. Maloney, President of Worcester State University

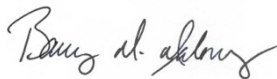


It was a singular privilege when I stepped into the Worcester State University's President's office July 1, 2011. I have been impressed by both the outstanding reputation of the university and the quality of its students and faculty. WSU is the only state university to be named "Best in the Northeast" by the *Princeton Review*—for eight years in a row. In addition, *U.S. News and World Report* recognized WSU as one of only two Massachusetts State Universities in the top tier of their northern region rankings. We have also been named as one of only 311 "Green Colleges" by the Princeton Review. Worcester Magazine has named WSU a "Best College" six times. In addition to all of these facts that demonstrate our quality and innovation, our Office of Institutional Research annually compiles this annual report of valuable data.

As the facts in this report demonstrate, our university is not the same today as it was in 1874 when we were founded. However, our dedication to enriching the lives of our students through excellence in education remains unchanged.

The importance of this publication and our reliance on hard data to drive our strategic decision making process remains as crucial today as it has always been.

Sincerely,

A handwritten signature in black ink that reads "Barry M. Maloney". The signature is fluid and cursive.

Barry M. Maloney
President

Board and Administration

Board of Trustees

John P. Brissette '88, *Chair*
George H. Albro '65, M.S. '68, *Vice Chair*
Ronald R. Valerio '75, *Vice Chair*
Craig L. Blais
Stephen J. Bostic '77, M.S. '86
Abigail J. Chmielecki '12

Isabel Gonzalez-Webster
Terence J. Shanley
Shirley A. Steele '59, M.S. '63
George W. Tetler III
Robert L. Thomas

Standing Committees 2011-2012

Academic/Student Development:

Ronald R. Valerio, *Chair*
Abigail J. Chmielecki
Terence J. Shanley
Robert L. Thomas

Human Resources:

George Albro, *Chair*
Craig Blais
Isabel Gonzalez-Webster
Terence Shanley

Finance and Facilities:

George W. Tetler III, *Chair*
George H. Albro
Craig L. Blais
Shirley A. Steele

Planning and Development:

Stephen Bostic, *Chair*
Abigail J. Chmielecki
Shirley A. Steele
George W. Tetler III
Ronald R. Valerio

Note: Chair John Brissette is an ex-officio voting member of each committee.
President Barry Maloney is an ex-officio non-voting member of each committee.

Campus Administration

Barry Maloney, *President*

Charles Cullum, *Provost/VP, Academic Affairs*

Sibyl M. Brownlee, *VP, Student Affairs*

Kathleen M. Eichelroth, *VP, Administration
and Finance*

Thomas M. McNamara, *VP, Institutional
Advancement*

Donald W. Vescio, *VP, Information Technologies*

Julie Kazarian, *Assoc. VP/Student Affairs, Dean
of Students*

Robin J. Quill, *Assoc. VP, Administration and
Finance*

Maureen D. Shamgochian, *Associate VP,
Academic Affairs*

William H. White, *Assoc. VP & Dean, Graduate
and Continuing Education*

Carol Lerch, *Asst. VP, Assessment and Planning*

Lea Ann Scales, *Asst. VP, Public Relations and
Marketing*

Judith A. St. Amand, *Executive Assistant to the
President*

Lori J. Dawson, *Dean, School of Humanities and
Social Sciences*

Roberta Kyle, *Associate Dean, Graduate &
Continuing Education*

Adrian Gage, *Assistant Dean, Student
Affairs/Director of Residence Life*

Sara Grady, *Assistant Dean, Graduate &
Continuing Education*

Timothy J. Sullivan, *Assistant Dean, Student
Affairs and Director, Student Activities*

Marcella Uribe-Jennings, *Assistant
Dean/Director, Office of Multicultural
Affairs*

Mary Jo Marion, *Executive Director, Latino
Educational Institute*

Beth Axelson, *Director, Admissions*

Lynn E. Bromley, *Director, Payroll/Benefits*

Brenda Bussey, *Director, Procurement/Business
Manager*

Marion Catacchio, *Director, Financial Records,
Institutional Advancement*

Julie A. Chaffee, *Director, Registrar*

Susan E. Chapman, *Director, Athletics*

James Driscoll, *Director of Budget, Planning &
Policy Development*

Marcia J. Eagleson, *Director, Career Services*

Melissa Fleming, *Director, Student
Affairs/Conference & Event Services*

Tara Hancock, *Director of Alumni Affairs*

Calvin Hill, *Director, Affirmative Action &
Compliance*

Donald D. Hochstetler, *Director, Library*

William Hosmer, *Director, Center for Effective
Instruction*

Frances Manocchio, *Director, Disability Services*

Jayne A. McGinn, *Director, Financial Aid*

Raja Mukherjee, *Director, Advancement Services*

Laura A. Murphy, *Director, Counseling Services*

Rosemary F. Naughton, *Chief of University Police*

Sandra K. Olson, *Director, Facilities*

Katey Palumbo, *Interim Director, International
Programs*

Nancy Ramsdell, *Director, End User Service &
Technology Development, IT*

Susan Seibel, *Director, Intensive English Language
Institute*

Kenneth A. Smith, *Director, Institutional Research*

Gerald E. Sorge, *Director, Academic Affairs
Administrative Support*

Russell E. Vickstrom, *Director, Human Resources*

Andrea L. Wamboldt, *Director, Academic Success*

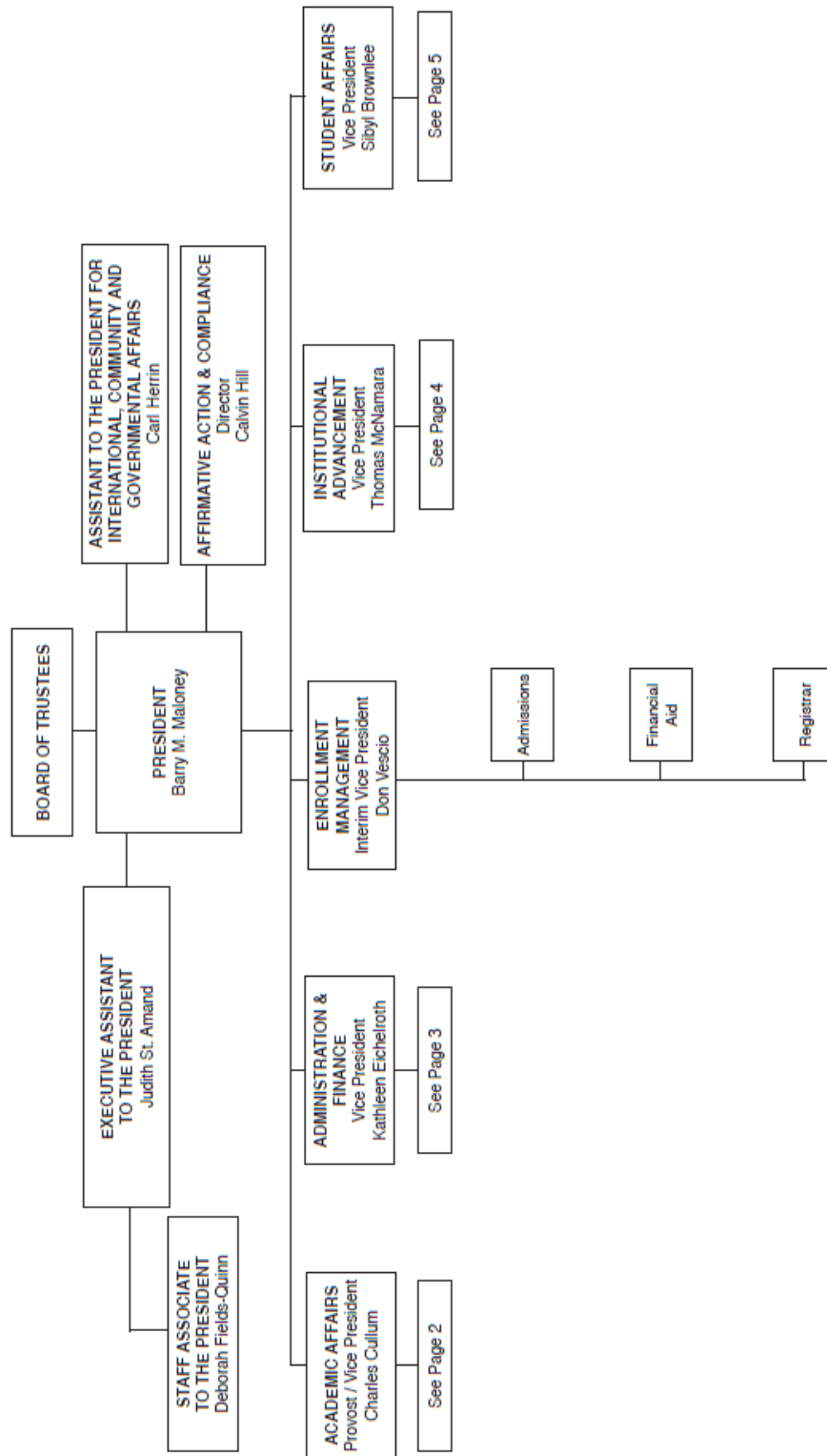
Department Chairs, Fall 2011

| <i>Name</i> | <i>Department</i> | <i>Title</i> |
|--------------------|------------------------------------|--------------|
| Ellen Fynan | Biology | Chair |
| Renuka Jain | Business and Economics | Chair |
| Alan Cooper | Chemistry | Chair |
| Don Bullens | Communication | Chair |
| Linda Larrivee | Communication Sciences & Disorders | Chair |
| Karl Wurst | Computer Science | Chair |
| Robert Brooks | Criminal Justice | Chair |
| Raynold Lewis | Education | Chair |
| Dennis Quinn | English | Chair |
| Helena Semerjian | Health Sciences | Chair |
| Frank Minasian | History and Political Science | Chair |
| Richard Bisk | Mathematics | Chair |
| Stephanie Chalupka | Nursing | Chair |
| Margaret Hart | Occupational Therapy | Chair |
| Henry Theriault | Philosophy | Chair |
| Patricia Benjamin | Physical and Earth Science | Chair |
| Emily Soltano | Psychology | Chair |
| Matthew Johnsen | Sociology | Chair |
| Steven Corey | Urban Studies | Chair |
| Michael Hachey | Visual & Performing Arts | Chair |
| Dennis Quinn | World Languages | Chair |

Source: Academic Affairs Office

Organizational Chart

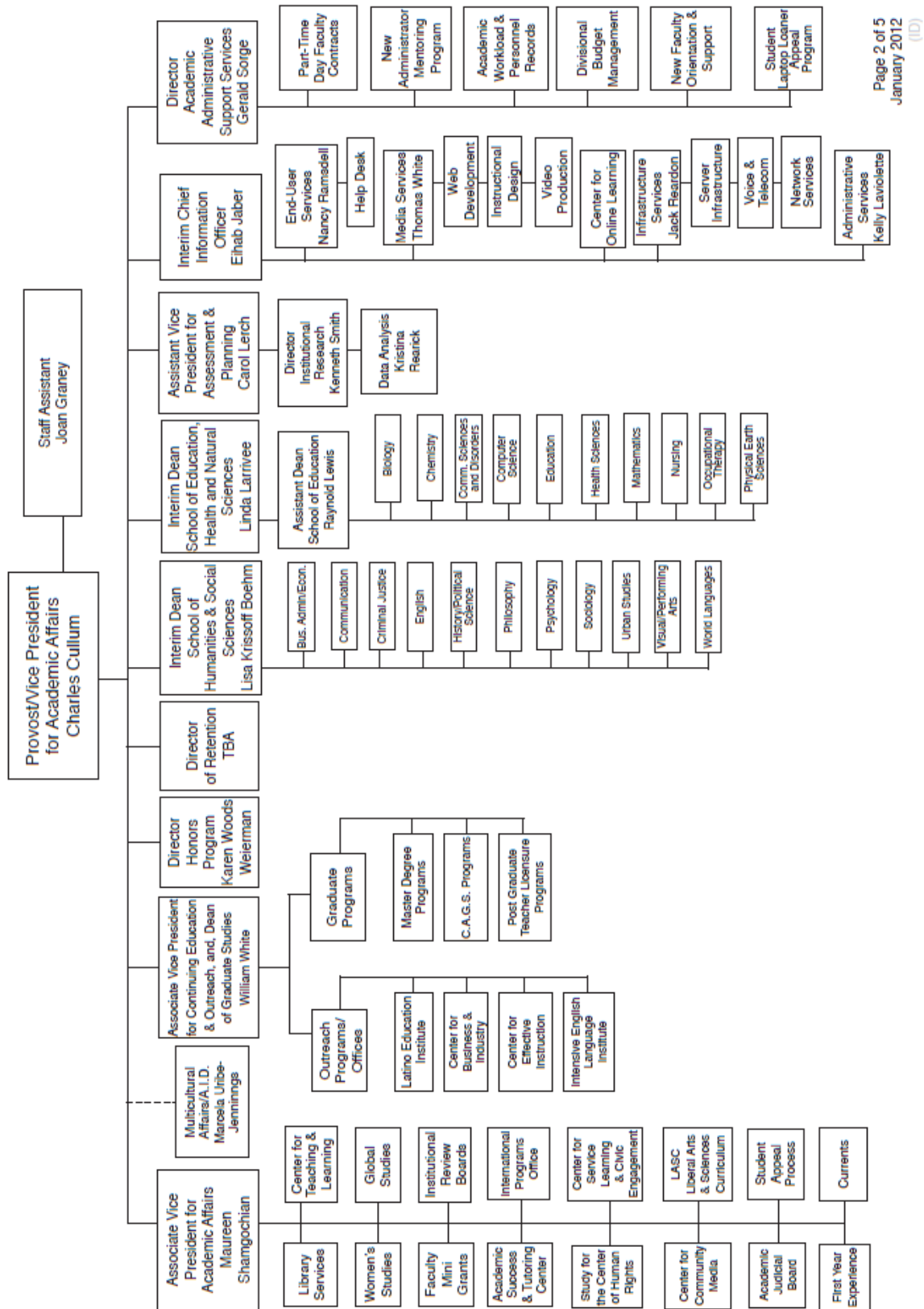
WORCESTER STATE UNIVERSITY TABLE OF ORGANIZATION



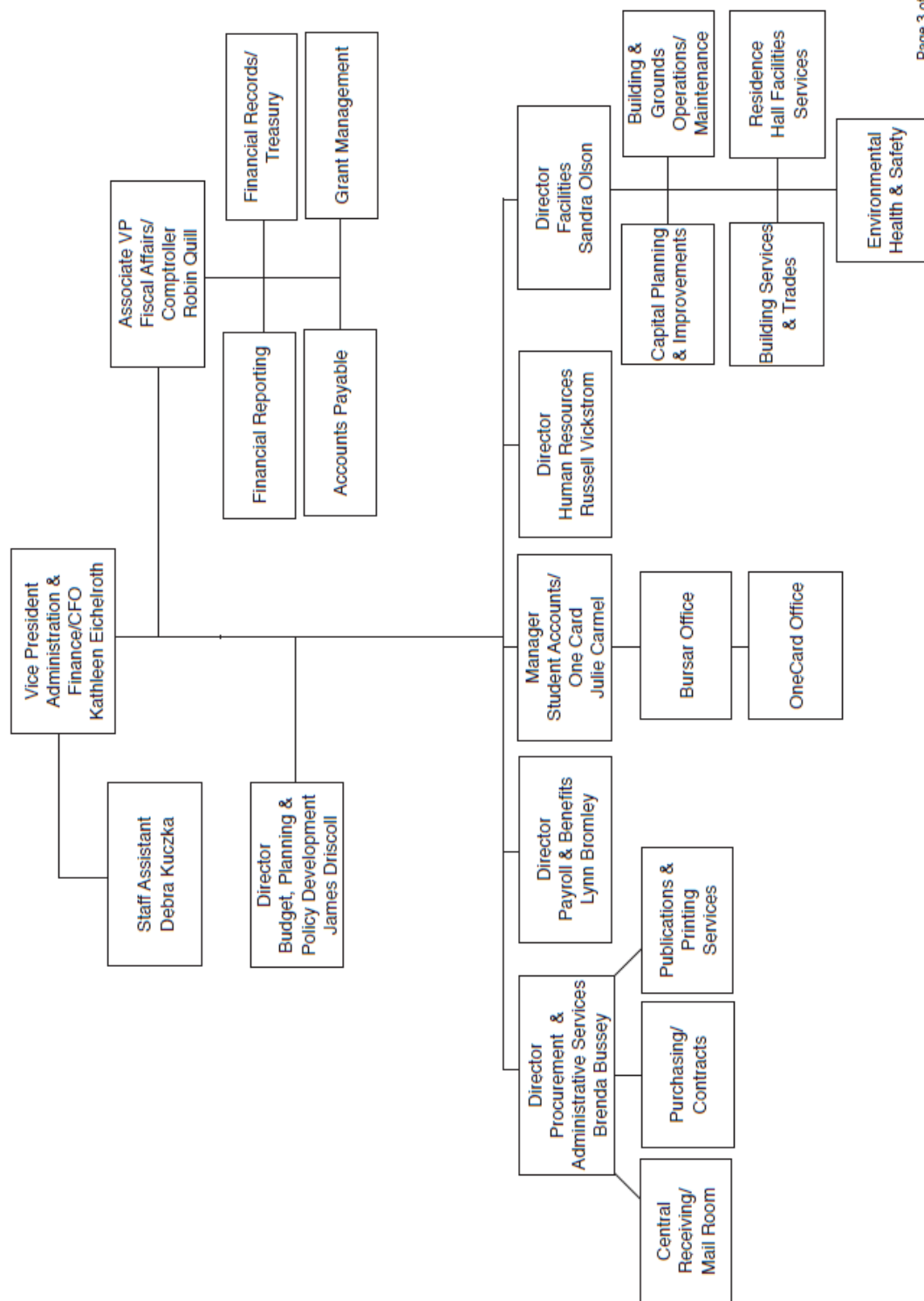
Page 1 of 5
January 2012
(10)

Source: Printing and Publications

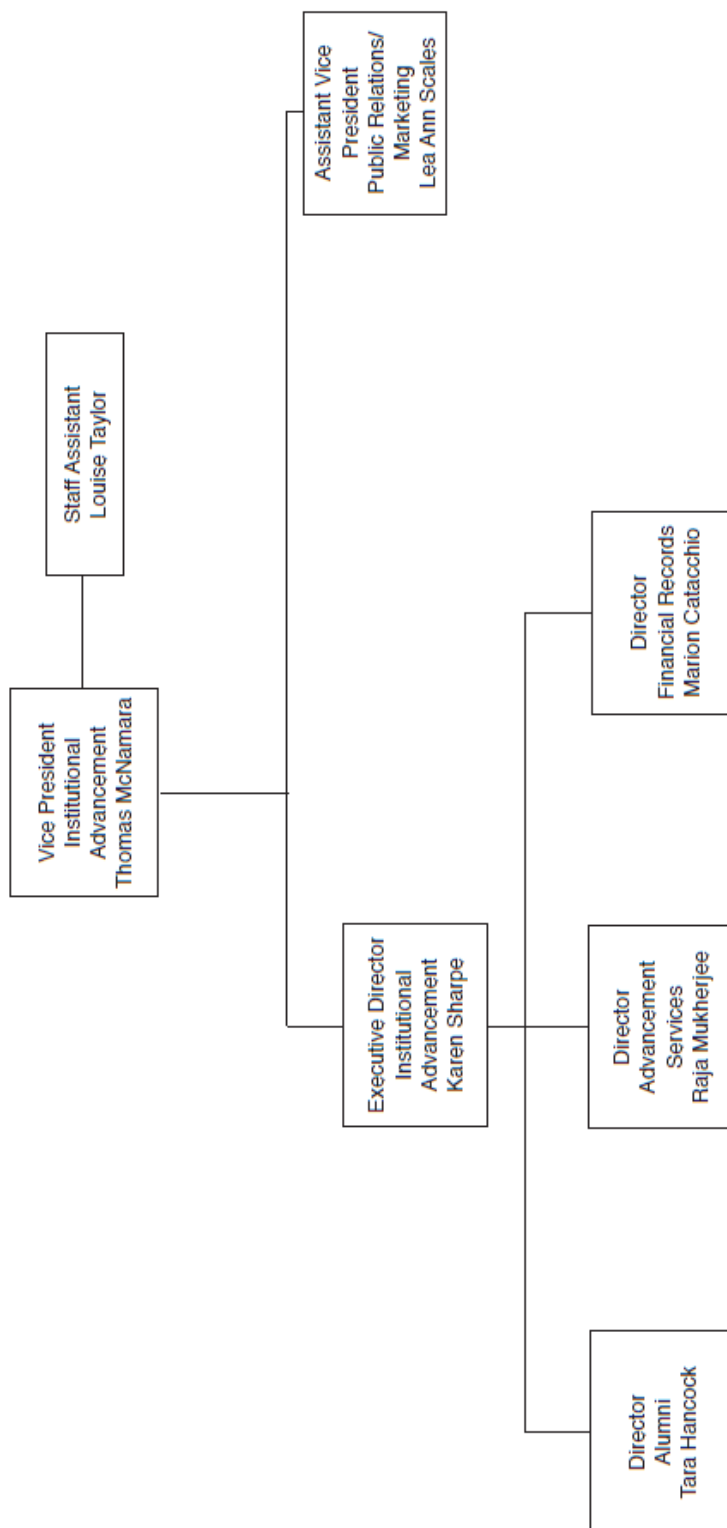
Division of Academic Affairs



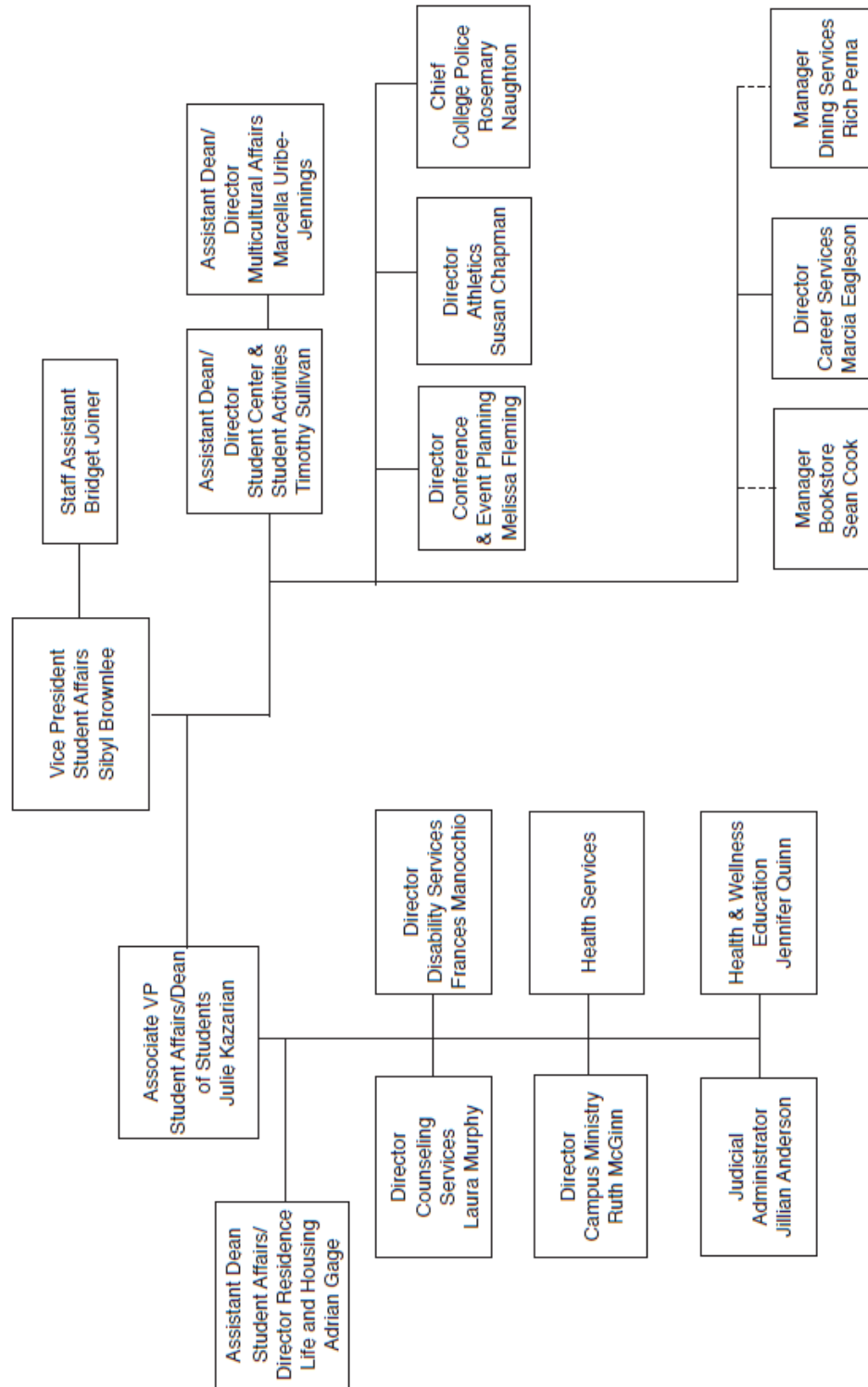
Division of Administration and Finance



Division of Institutional Advancement



Division of Student Affairs



General Information

Worcester State University *SNAPSHOT*, Fall 2011

STUDENT PROFILE

Fall Enrollment 2011:

| | |
|-------------------------|-------|
| Undergraduate Full-Time | 3,901 |
| Undergraduate Part-Time | 1,376 |
| Graduate Full-Time | 166 |
| Graduate Part-Time | 761 |
| Total Headcount | 6,204 |

Student Characteristics:

| | |
|---|-------|
| Women (Undergraduate) | 60% |
| Men (Undergraduate) | 40% |
| Out of State | 2.9% |
| International (18 Countries) | 1.0% |
| ALANA ¹ Students | 16.4% |
| Residential Students ² | 32% |
| Average Age (Undergraduate) | 23.9 |
| Average HSGPA | 3.06 |
| Average SAT Score | 1014 |
| Retention (Fall 2010, 1 st year) | 80% |
| Graduation (2005, 6 th year) | 47% |

First-time Freshmen Admissions:

| | |
|---------------------|-------|
| Applied | 3,649 |
| Accepted | 2,387 |
| Accepted & Enrolled | 796 |

Transfer Admissions:

| | |
|---------------------|-------|
| Applied | 1,016 |
| Accepted | 834 |
| Accepted & Enrolled | 547 |

FINANCES

Cost of Attendance:

| | |
|--------------------------|----------|
| Undergraduate Tuition | \$970 |
| Undergraduate Fees | \$6,683 |
| Room and Board (Average) | \$10,400 |

Revenues (2010-2011):

| | |
|----------------------|--------------|
| State Appropriation | \$25,931,430 |
| Tuition and Fees-Net | \$28,975,328 |
| Other Sources | \$22,438,583 |
| Total Revenues | \$77,345,341 |

Student Financial Aid (2010-2011):

| | |
|------------------------------|---------|
| Students Receiving FAID | 3,699 |
| Average Size of Award | \$9,015 |
| Students on WSC Scholarships | 1,225 |

Market Value of Funds under Mgmt:

| | |
|------------|--------------|
| Endowment: | \$15,511,682 |
| | \$10,162,832 |

¹ ALANA (African-American, Latino, Asian, Native-American)

² Based only on Full-time, Degree-Seeking, Undergraduate Students

FACULTY-STAFF PROFILE

Faculty:

| | |
|---------------------------------------|--------|
| Full-Time (includes Librarians) | 191 |
| Part-Time Faculty | 233 |
| Full-Time Faculty with PhD/T Degree | 146 |
| Student to Faculty Ratio ³ | 17 : 1 |

Staff: (Full-time)

| | |
|----------------------------------|-----|
| Association of Professional Adm. | 115 |
| AFSCME | 156 |
| Non Unit Professionals | 35 |

ACADEMICS

Academic Programs:

| | |
|-----------------------|----|
| Undergraduate Majors | 25 |
| Undergraduate Minors | 27 |
| Graduate Programs | 24 |
| Study Abroad Programs | 43 |

Largest Major (1st Major only):

| | |
|-------------------------|-----|
| Business Administration | 797 |
| Criminal Justice | 416 |
| Psychology | 414 |
| Biology | 332 |
| Communication | 253 |

Average Undergraduate Class Size

19

Degrees Conferred (2010-2011):

| | |
|--|-------|
| Baccalaureate's | 809 |
| Post Bachelor's Certificates | 187 |
| Master's | 179 |
| Certificate of Advanced Graduate Study | 3 |
| Total Degrees Conferred | 1,178 |

STUDENT LIFE

| | |
|---------------------------------|----|
| Student Organizations and Clubs | 33 |
| Honor Societies | 17 |

Intercollegiate Sports:

| | |
|-------|----|
| Men | 10 |
| Women | 10 |

ALUMNI⁴

| | |
|---------------------------------|--------|
| Total Alumni | 34,109 |
| Alumni Living in MA | 22,872 |
| Alumni in Worcester County | 17,887 |
| Alumni in the City of Worcester | 5,140 |

³ FTE Students Taught/FTE Faculty

⁴ Includes both Undergraduate and Graduate Degree Recipients

Brief History of WSU

Worcester State University was founded as the Worcester Normal School in 1874, the fifth state-funded normal school in Massachusetts and one of dozens of teacher-training schools established during the 19th century.

In 1932, all of the state's normal schools were re-christened "teachers colleges" and the old Normal School became Worcester State Teachers College. That same year, the University moved to its present location on Chandler Street.

The large, colonial-style building now known as the Administration Building was constructed on the site of Willow Farm, owned by Worcester inventor and philanthropist George I. Rockwood. In 1942, Rockwood donated an additional thirty-five acres, paving the way for campus expansion.

The University's fifth president, Dr. Eugene A. Sullivan (1947-1970), presided over a period of unprecedented growth. From 1947 to 1970, enrollment grew from 150 students (all pursuing education degrees) to nearly 2,800 students pursuing a variety of degrees. In 1952, the University introduced its first graduate degree, a master of science in education. Campus expansion included construction of the Gymnasium and Classroom Building in 1958, the Science Building in 1965 (rechristened the Dr. Eugene A. Sullivan Building in 1980), and the Learning Resource Center in 1970. Dr. Sullivan also laid the groundwork for construction of Chandler Village, the first student residence hall on campus.

By 1963, the former teachers college had evolved into a liberal arts and sciences college, a transition acknowledged by the Board of Education in 1963 when it voted to change the school's name to Worcester State College.

In 1974, the curriculum was expanded to include a B.S. in business administration and a B.S. in nursing, the first Bachelor of Science program for registered nurses in New England and the first to be accredited by the National League of Nurses.

That same year, the University established The Graduate School, which offered several new master's degree programs. During the 1980s, the University expanded its programs to include the area's first Master of Science in Speech-Language Pathology and the first bachelor's degree in Occupational Therapy in the state college system.

During the presidency of Dr. Kalyan K. Ghosh (1992-2002), the University incorporated the widespread use of technology, from computer-based learning to a campus-wide network. In 2000, the University opened the 110,000-square-foot Kalyan K. Ghosh Center for Science and Technology, with instructional laboratory facilities for twelve academic programs and a 196-seat multimedia lecture hall.

The University welcomed its first female president, Dr. Janelle C. Ashley, in 2002. Under her leadership the campus has undertaken major renovation and building projects, including construction of Wasylean Hall, an award-winning 348-bed residence hall that opened its doors in 2004, and expansion of Dowden Hall, which increased the number of beds for resident students to 1,200.

In 2010, the Massachusetts Legislature voted to grant university status to Massachusetts state colleges, recognition of the fact that the schools qualified as universities according to the classification of institutions of higher education established by the Carnegie Foundation for the Advancement of Teaching. The old Worcester Normal School had officially evolved into Worcester State University.

Barry M. Maloney, the 11th president of Worcester State University, assumed the helm July 1, 2011.

Source: Public Relations and Marketing

Core Values

Worcester State University values inclusiveness and diversity, recognizes higher education's responsibility to society, and embraces the belief that widespread access to excellent educational opportunities is the cornerstone of a democratic society.

Vision

Worcester State University is dedicated to offering high quality, affordable undergraduate and graduate academic programs and to promoting the lifelong intellectual growth, global awareness, and career opportunities of its students.

Mission

Worcester State University, a public metropolitan institution of higher learning located in a culturally vibrant region of the Commonwealth, affirms the principles of liberal learning as the foundation for all traditional liberal arts and sciences disciplines, while maintaining its historical focus on teacher education. It has expanded its offerings with professional degree programs in biomedical sciences, business, and the health professions. Through its curricula, the university addresses the intellectual and career needs of the increasingly diverse citizenry of central Massachusetts.

Worcester State University is dedicated to offering high quality, affordable undergraduate and graduate academic programs and to promoting global awareness, lifelong intellectual growth, and career opportunities of its students. To this end, the university values teaching excellence rooted in scholarship and community service; cooperates with the business, social and cultural resources of Worcester County; collaborates with other institutions of higher learning in the region, and develops new programs responsive to emerging community needs.



Strategic Priorities FY 2010-2014

RETENTION: Develop diverse program offerings to meet the needs of a changing student population.

A continued decline in the population of traditional college age students will require changes in student recruitment efforts and student services in order to attract and retain a greater share of this declining market and/or new market segments.

ACADEMICS: Promote greater flexibility to address the changing needs of teaching and scholarship.

The changing needs of students, employers, the Commonwealth, and faculty as well as increasing global challenges will necessitate shifts in academic offerings and in the way in which academics are taught and supported.

ASSESSMENT: Develop a culture of assessment that informs all aspects of the College's business operations and academic offerings.

The state government and general public will increasingly demand evidence of educational impact and cost efficiency as justification for public financing.

INFRASTRUCTURE: Modernize existing facilities and prioritize sustainability in infrastructure development.

Despite resource constraints, substantial ongoing support of facility, technology initiatives, and communication processes will be necessary to expand the quality of learning and meet the needs and expectations of students, faculty, and staff.

FISCAL: Continue to deliver quality academic programming, while maintaining the fiscal health of the University.

The University will experience continued and potentially increasing financial constraints in the foreseeable future. WSU must increase its capacity to generate resources that will allow it to pursue strategic, transformational goals.

COMMUNICATION: Develop efficient and effective communications processes to promote the University and to foster greater collaboration on campus.

The University will reinforce its reputation for excellence by raising awareness of its outstanding academic programs and innovative community service initiatives.

Source: 2010 President's Annual Report

Accreditation

Worcester State University is accredited by the New England Association of Schools and Colleges, Inc., a non-governmental, nationally recognized organization whose affiliated institutions include elementary schools through collegiate institutions offering postgraduate instruction.

Accreditation of an institution by the New England Association indicates that it meets or exceeds criteria for the assessment of institutional quality periodically applied through a peer group review process. An accredited school or college is one which has available the necessary resources to achieve its stated purposes through appropriate educational programs, is substantially doing so, and gives reasonable evidence that it will continue to do so in the foreseeable future. Institutional integrity is also addressed through accreditation.

The following programs are also accredited by their respective professional organizations:

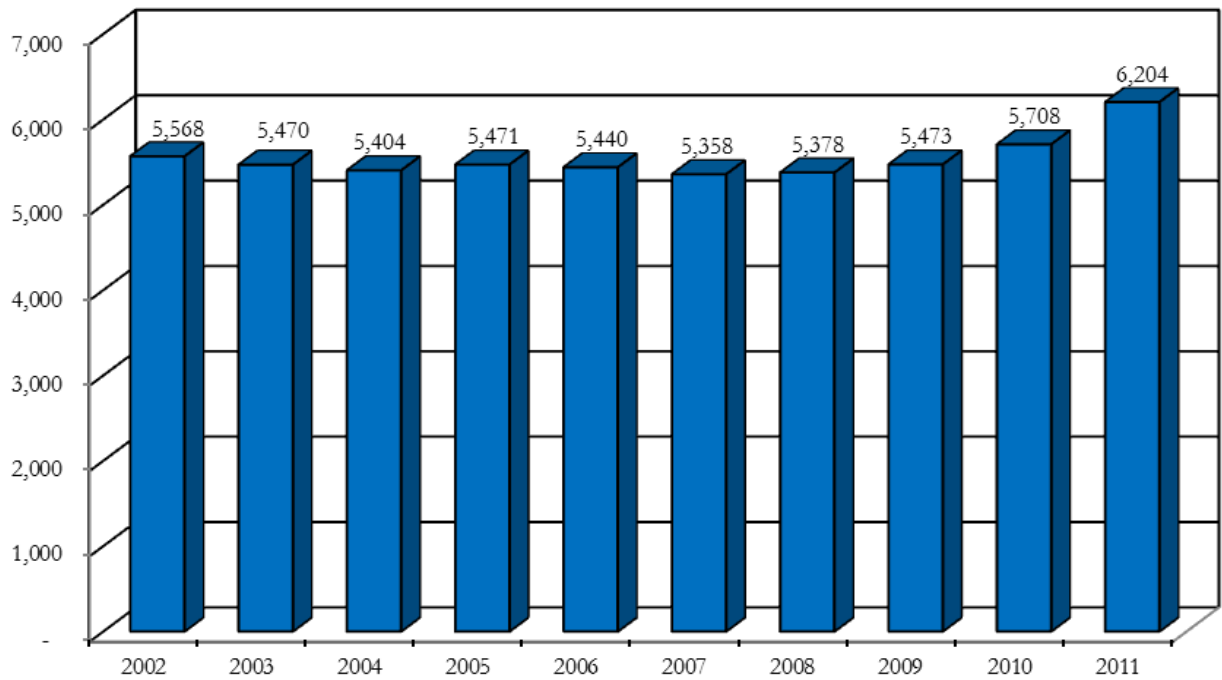
- Nursing: The National League for Nursing
- Speech-Language Pathology: The American Speech-Language Association
- Occupational Therapy: Accreditation Council for Occupational Therapy Education
- Nuclear Medicine Technology: The Joint Review Committee on Educational Programs in Nuclear Medicine Technology

Worcester State University has been named “Best in the Northeast”, by the Princeton Review for the eighth year in a row. It is the only Massachusetts State University with this designation. WSU was recognized as one of two Massachusetts State Universities in the top tier of the 2012 “Best Regional Universities” of the 2012 U.S. News and World Report College Rankings. WSU was also recognized for having the highest alumni giving rate in the state university system.



Student Profile

Longitudinal Enrollment, Fall 2002- Fall 2011



Source: IR Official DHE Fall Files

Students by Country of Residence, Fall 2011

| <i>Country</i> | <i>Undergraduate</i> | <i>Graduate</i> | <i>Total</i> |
|----------------------|----------------------|-----------------|--------------|
| Albania | 6 | 0 | 6 |
| Canada | 1 | 0 | 1 |
| China | 15 | 2 | 17 |
| Ghana | 3 | 3 | 6 |
| Greece | 2 | 0 | 2 |
| India | 0 | 1 | 1 |
| Iran | 1 | 0 | 1 |
| Kenya | 2 | 1 | 3 |
| Korea, Republic of | 2 | 0 | 2 |
| Nepal | 1 | 0 | 1 |
| Nigeria | 1 | 0 | 1 |
| Philippines | 1 | 0 | 1 |
| Poland | 1 | 0 | 1 |
| Spain | 1 | 0 | 1 |
| Syrian Arab Republic | 1 | 0 | 1 |
| Uganda | 1 | 0 | 1 |
| United States | 5,227 | 920 | 6,147 |
| Venezuela | 9 | 0 | 9 |
| Vietnam | 1 | 0 | 1 |
| Zambia | 1 | 0 | 1 |
| Total | 5,277 | 927 | 6,204 |

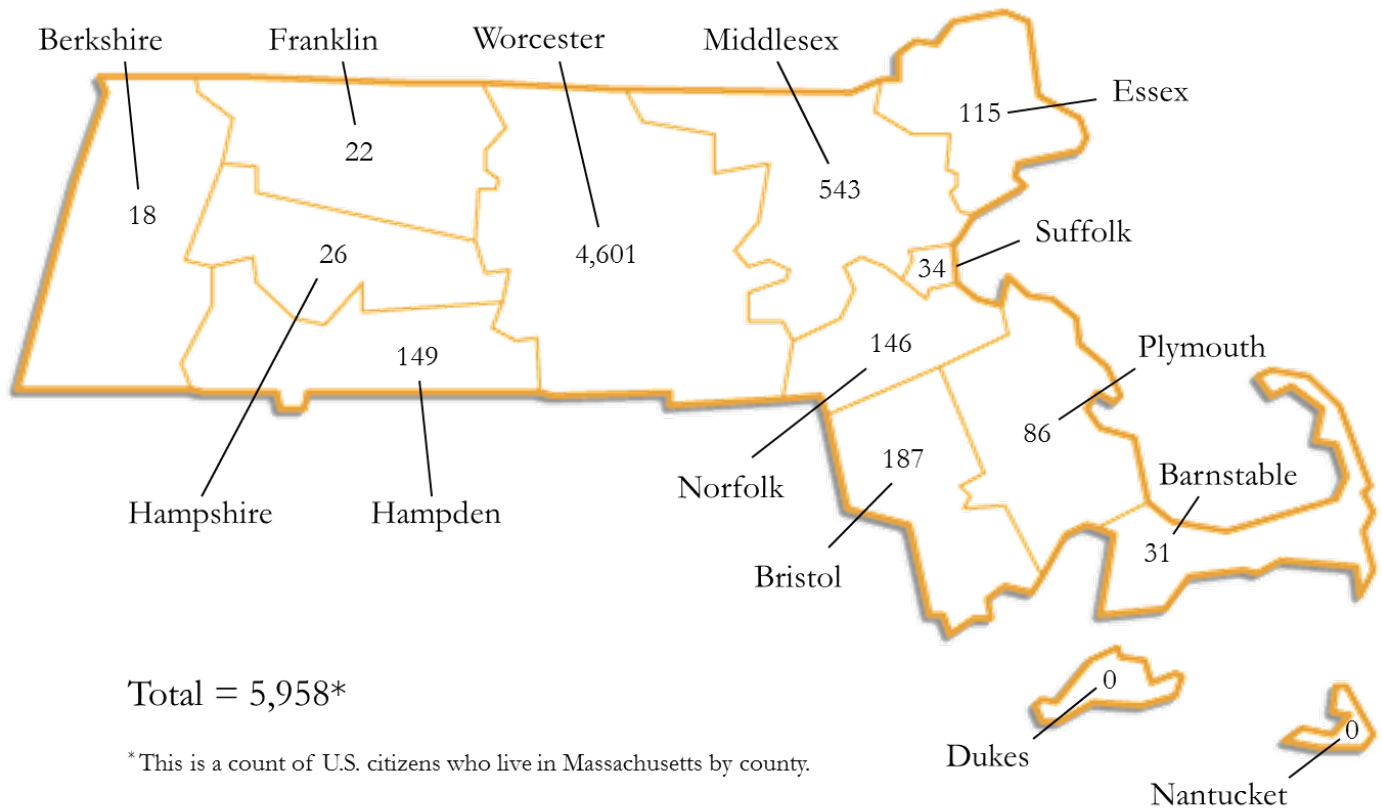
Source: IR Official DHE Fall Files

Students by State of Residence, Fall 2011

| <i>State</i> | <i>Undergraduate</i> | | | <i>Graduate</i> | | | <i>Total</i> |
|----------------------|----------------------|---------------|--------------|-----------------|---------------|--------------|--------------|
| | <i>Male</i> | <i>Female</i> | <i>Total</i> | <i>Male</i> | <i>Female</i> | <i>Total</i> | |
| California | 4 | 0 | 4 | 0 | 0 | 0 | 4 |
| Colorado | 2 | 0 | 2 | 0 | 0 | 0 | 2 |
| Connecticut | 26 | 35 | 61 | 7 | 12 | 19 | 80 |
| Florida | 2 | 2 | 4 | 0 | 0 | 0 | 4 |
| Georgia | 0 | 0 | 0 | 0 | 1 | 1 | 1 |
| Idaho | 1 | 0 | 1 | 0 | 0 | 0 | 1 |
| Maine | 1 | 2 | 3 | 0 | 0 | 0 | 3 |
| Massachusetts | 2036 | 3041 | 5077 | 243 | 638 | 881 | 5,958 |
| Michigan | 1 | 1 | 2 | 0 | 0 | 0 | 2 |
| New Hampshire | 4 | 12 | 16 | 1 | 5 | 6 | 22 |
| New Jersey | 5 | 0 | 5 | 0 | 1 | 1 | 6 |
| New York | 5 | 1 | 6 | 0 | 4 | 4 | 10 |
| Oklahoma | 1 | 0 | 1 | 0 | 0 | 0 | 1 |
| Oregon | 1 | 1 | 2 | 0 | 0 | 0 | 2 |
| Pennsylvania | 5 | 0 | 5 | 0 | 0 | 0 | 5 |
| Rhode Island | 10 | 19 | 29 | 2 | 6 | 8 | 37 |
| Texas | 1 | 0 | 1 | 0 | 0 | 0 | 1 |
| Vermont | 4 | 2 | 6 | 0 | 0 | 0 | 6 |
| Virginia | 1 | 0 | 1 | 0 | 0 | 0 | 1 |
| Washington | 1 | 0 | 1 | 0 | 0 | 0 | 1 |
| Non-US Citizen | 22 | 28 | 50 | 5 | 2 | 7 | 57 |
| Total | 2,133 | 3,144 | 5,277 | 258 | 669 | 927 | 6,204 |

Source: IR Official DHE Fall Files

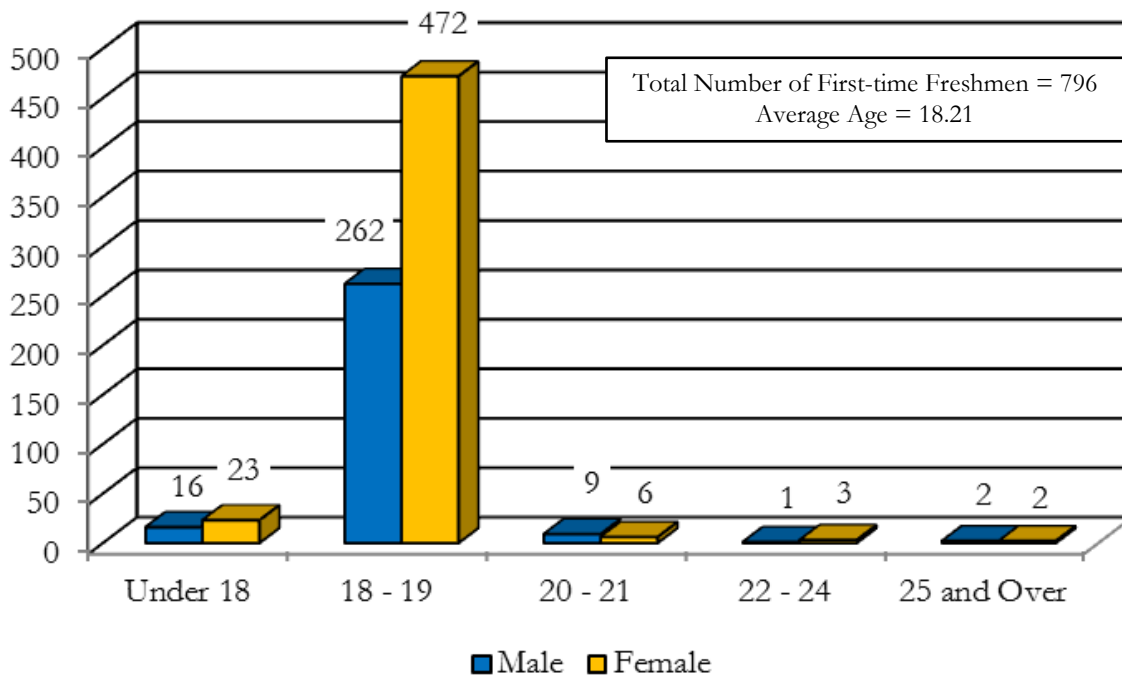
Students by Massachusetts County of Residence, Fall 2011



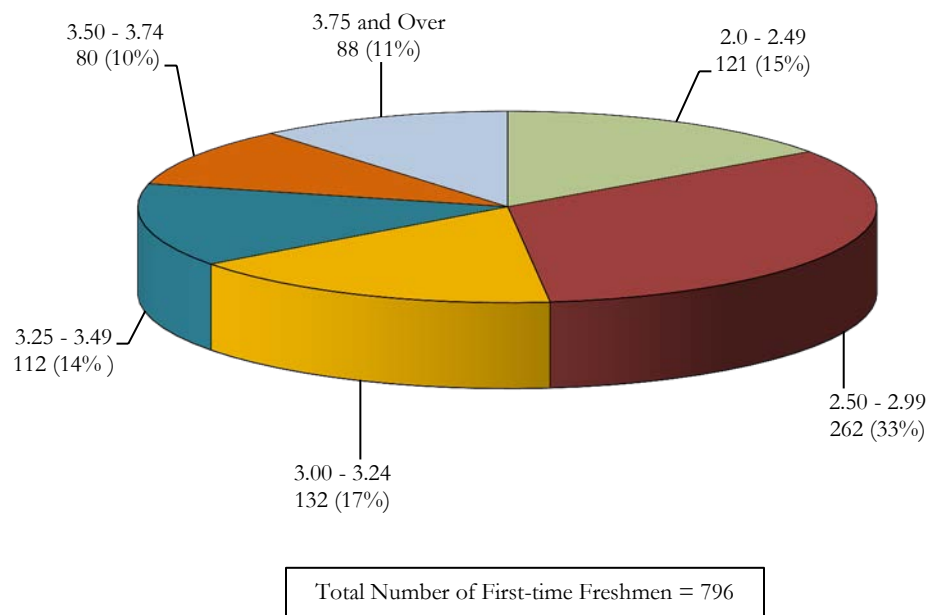
| <i>County</i> | <i>Undergraduate</i> | <i>Graduate</i> | <i>Total</i> |
|---------------|----------------------|-----------------|--------------|
| Barnstable | 25 | 6 | 31 |
| Berkshire | 15 | 3 | 18 |
| Bristol | 163 | 24 | 187 |
| Essex | 106 | 9 | 115 |
| Franklin | 19 | 3 | 22 |
| Hampden | 131 | 18 | 149 |
| Hampshire | 22 | 4 | 26 |
| Middlesex | 471 | 72 | 543 |
| Norfolk | 131 | 15 | 146 |
| Plymouth | 83 | 3 | 86 |
| Suffolk | 26 | 8 | 34 |
| Worcester | 3,885 | 716 | 4,601 |
| Total | 5,077 | 881 | 5,958 |

Source: IR Official DHE Fall Files

Age of Degree-seeking, First-time Freshmen, Fall 2011



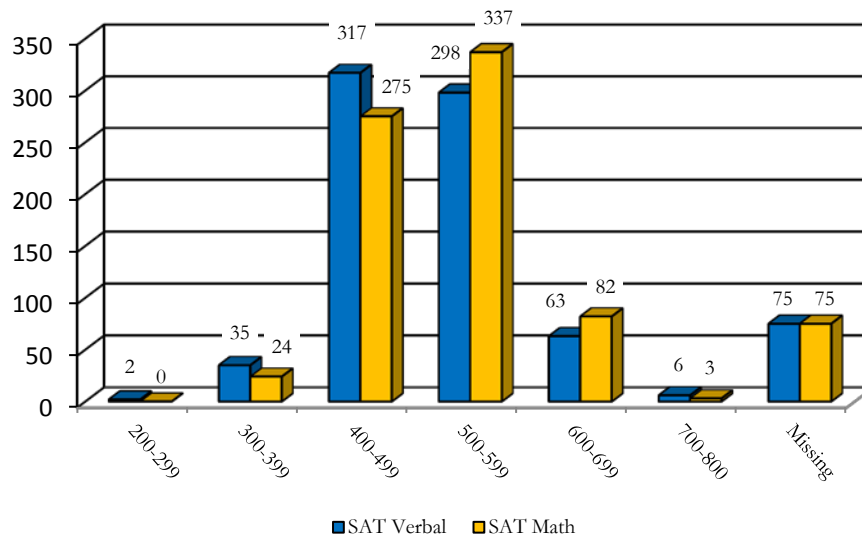
High School GPA of Degree-seeking, First-time Freshmen, Fall 2011



Source: IR Official DHE Fall Files

SAT Scores of Degree-seeking, First-time Freshmen, Fall 2011

| Score Range | SAT Verbal | | | SAT Math | | |
|--------------|------------|------------|------------|------------|------------|------------|
| | Male | Female | Total | Male | Female | Total |
| 200-299 | 1 | 1 | 2 | 0 | 0 | 0 |
| 300-399 | 14 | 21 | 35 | 7 | 17 | 24 |
| 400-499 | 109 | 208 | 317 | 73 | 202 | 275 |
| 500-599 | 106 | 192 | 298 | 133 | 204 | 337 |
| 600-699 | 26 | 37 | 63 | 43 | 39 | 82 |
| 700-800 | 2 | 4 | 6 | 2 | 1 | 3 |
| Missing | 32 | 43 | 75 | 32 | 43 | 75 |
| Total | 290 | 506 | 796 | 290 | 506 | 796 |

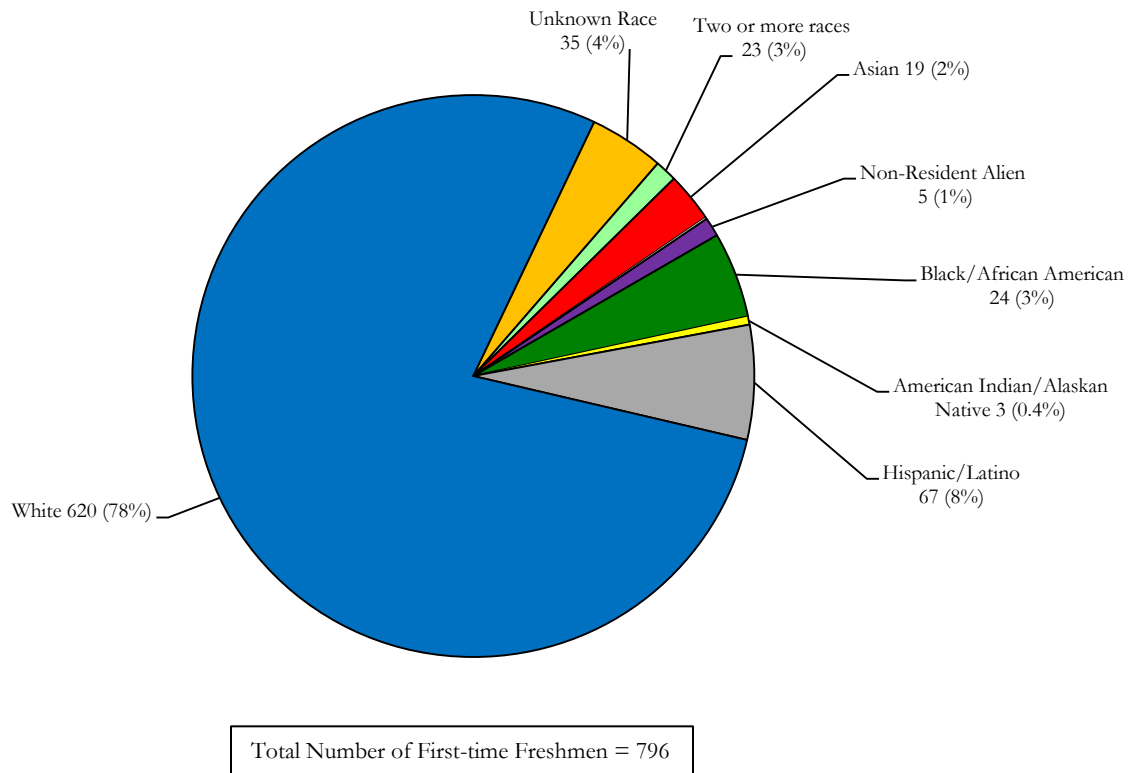
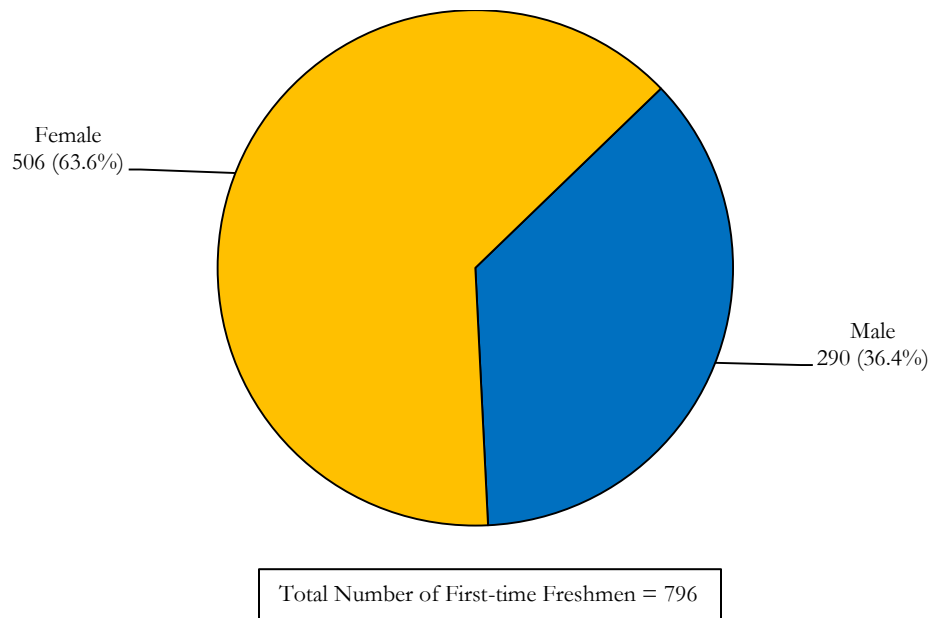


Average Combined SAT Scores, Fall 2011

Male 1031.7 Female 1004.7 Total 1014

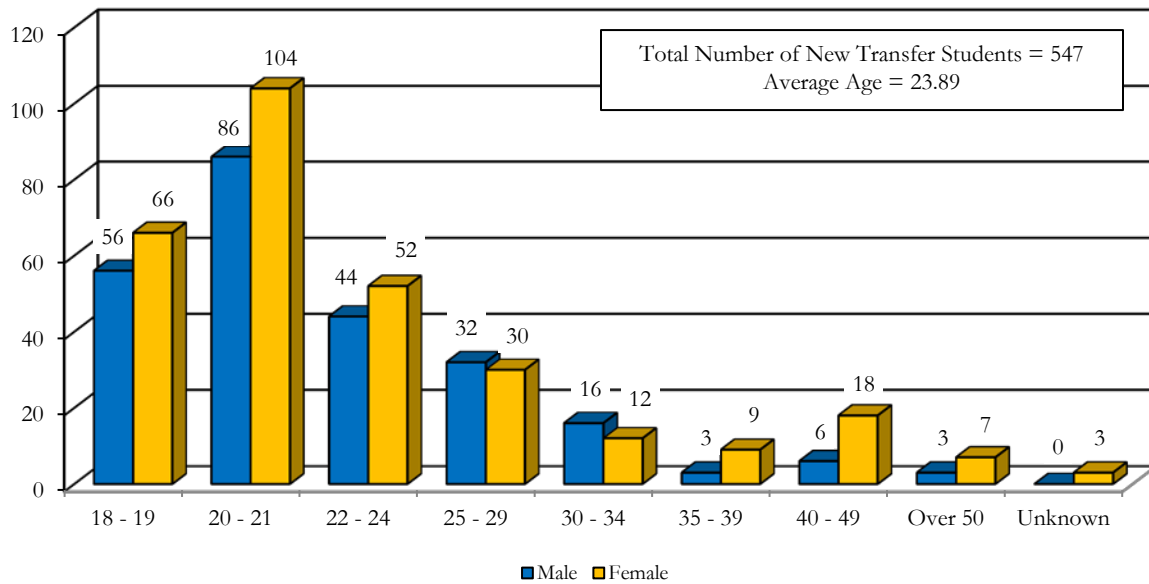
Source: IR Official DHE Fall Files

Gender and Ethnicity of Degree-seeking, First-time Freshmen, Fall 2011

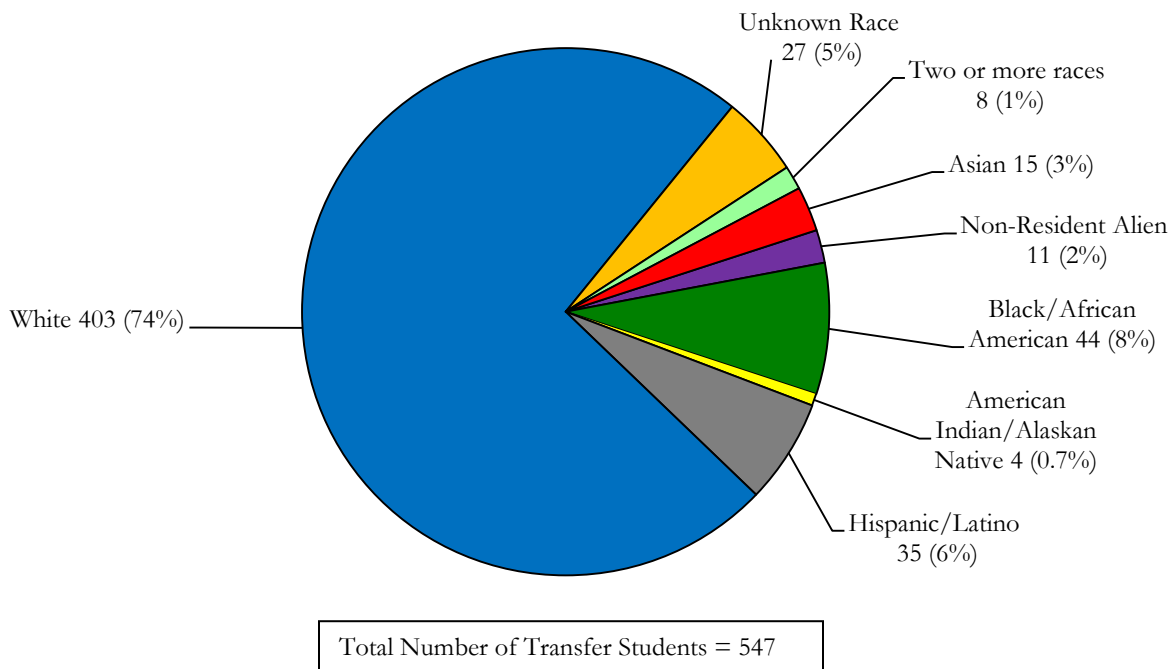


Source: IR Official DHE Fall Files

Age of New Degree-seeking, Transfer Students, Fall 2011



Ethnicity of New Degree-seeking, Transfer Students, Fall 2011



Source: IR Official DHE Fall Files

Transfer Institutions, Fall 2011

| <i>Institution</i> [*] | <i># of Students</i> |
|--|----------------------|
| Quinsigamond Community College | 156 |
| University of Massachusetts at Amherst | 21 |
| Mount Wachusett Community College | 20 |
| Anna Maria College | 11 |
| University of Massachusetts at Dartmouth | 10 |
| Bridgewater State University | 9 |
| Dean College | 9 |
| Mass Bay Community College | 9 |
| Middlesex Community College | 9 |
| Mass College of Liberal Arts | 8 |
| Total | 262 |

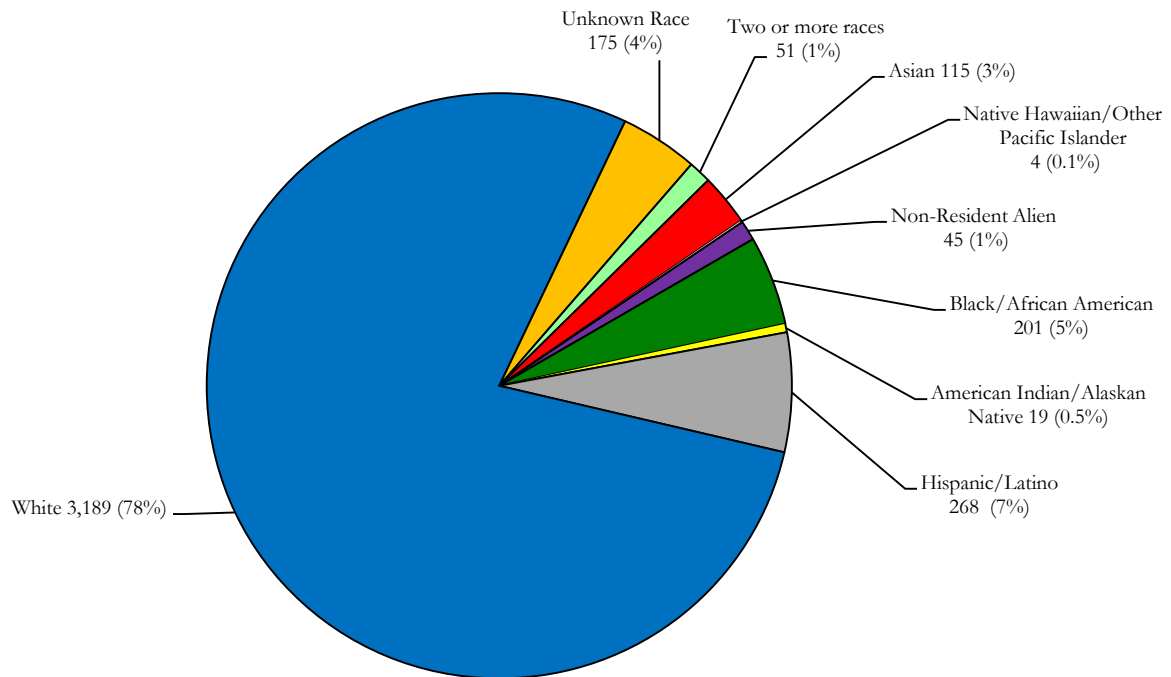
^{*} Institutions contributing approximately 50% of the transfer students

Majors of New Degree-seeking, Transfer Students, Fall 2011

| <i>Major</i> | <i>Male</i> | <i>Female</i> | <i>Total</i> |
|---|-------------|---------------|--------------|
| Biology | 17 | 32 | 49 |
| Biotechnology | 7 | 3 | 10 |
| Business Administration | 64 | 31 | 95 |
| Chemistry | 12 | 8 | 20 |
| Communication | 13 | 11 | 24 |
| Communication Science & Disorders | 2 | 26 | 28 |
| Community Health | 3 | 15 | 18 |
| Computer Science | 11 | 1 | 12 |
| Criminal Justice | 43 | 21 | 64 |
| Early Childhood Education | 0 | 8 | 8 |
| Early Childhood Education (Non-Licensure) | 0 | 5 | 5 |
| Economics | 4 | 3 | 7 |
| Elementary Education | 0 | 15 | 15 |
| English | 11 | 13 | 24 |
| Geography | 2 | 2 | 4 |
| Health Education | 6 | 2 | 8 |
| History | 7 | 6 | 13 |
| Mathematics | 6 | 2 | 8 |
| Natural Science | 4 | 2 | 6 |
| Nursing (Track 1) | 0 | 2 | 2 |
| Nursing (Track 2) | 1 | 3 | 4 |
| Occupational Studies | 0 | 1 | 1 |
| Psychology | 9 | 50 | 59 |
| Sociology | 4 | 12 | 16 |
| Spanish | 1 | 1 | 2 |
| Urban Studies | 1 | 6 | 7 |
| Undeclared | 17 | 17 | 34 |
| Visual & Performing Arts | 1 | 3 | 4 |
| Total | 246 | 301 | 547 |

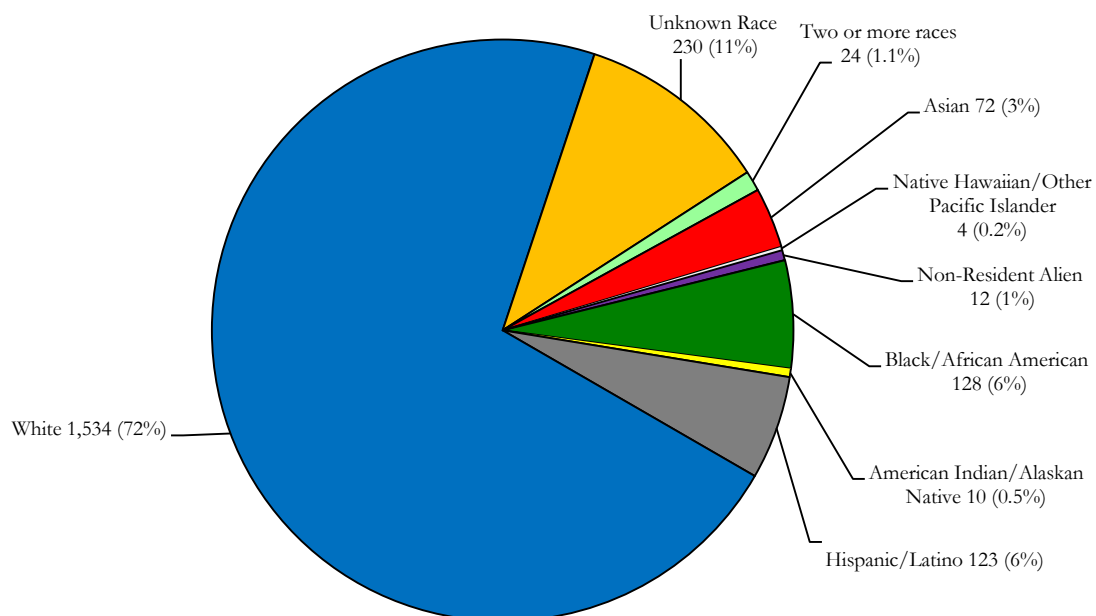
Source: IR Official DHE Fall Files

Ethnicity of Full-time Students, Fall 2011



Total Number of Full-time Students = 4,067

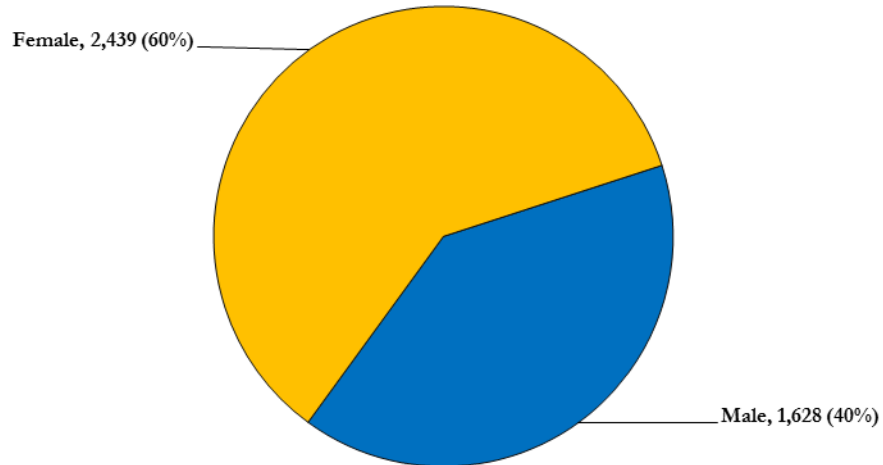
Ethnicity of Part-time Students, Fall 2011



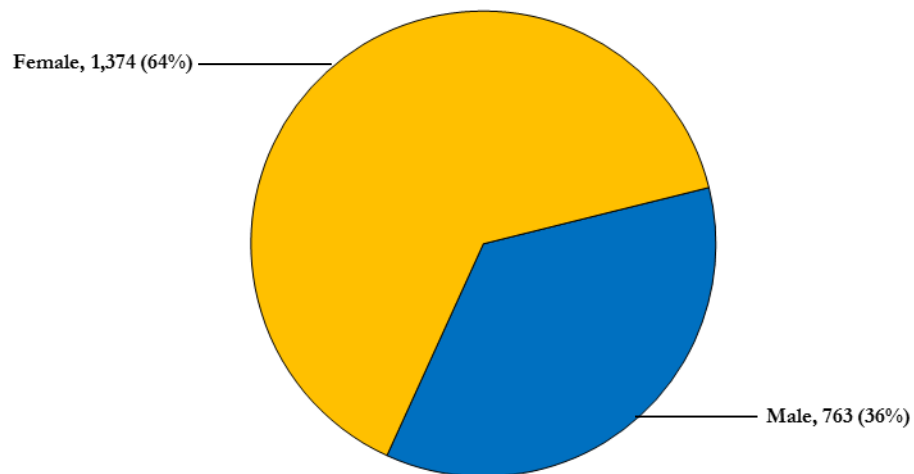
Total Number of Part-time Students = 2,137

Source: IR Official DHE Fall Files

Gender of Full-time Students, Fall 2011

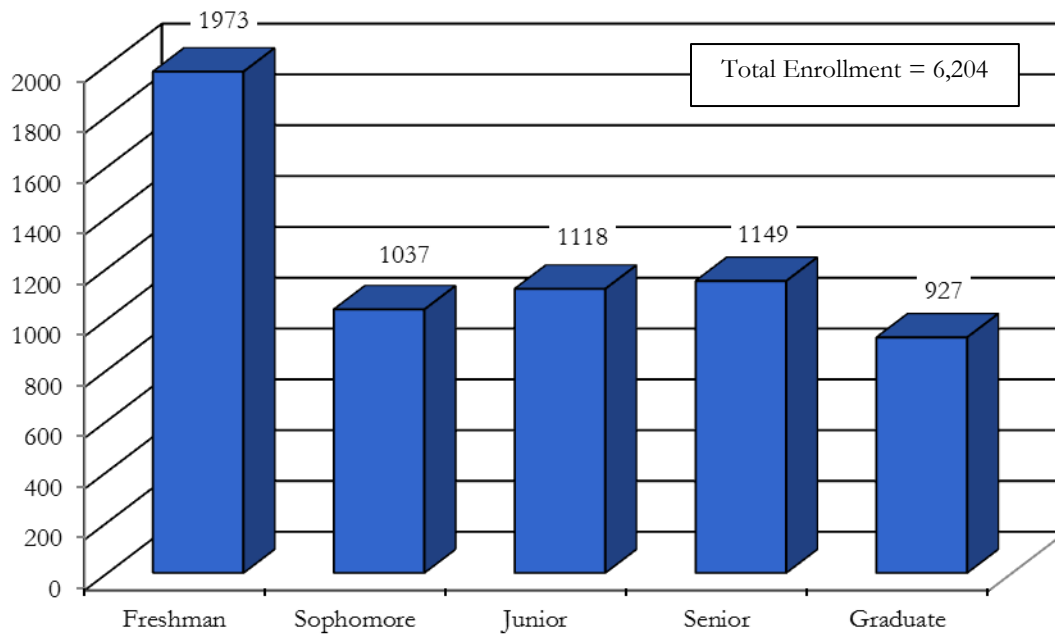


Gender of Part-time Students, Fall 2011



Source: IR Official DHE Fall Files

Total Enrollment by Student Classification, Fall 2011



Source: IR Official DHE Fall Files

On-Campus Housing by State of Residence and Class, Fall 2011

| <i>Class</i> | <i>Residence</i> | <i>Total</i> |
|--------------------|--------------------|--------------|
| Freshman | California | 1 |
| | Connecticut | 19 |
| | Florida | 2 |
| | Idaho | 1 |
| | Massachusetts | 639 |
| | New Hampshire | 5 |
| | New Jersey | 2 |
| | New York | 2 |
| | Oklahoma | 1 |
| | Pennsylvania | 1 |
| | Rhode Island | 10 |
| | Vermont | 1 |
| | Washington | 1 |
| | Non-Resident Alien | 1 |
| Total | | 686 |
| Sophomore | California | 1 |
| | Connecticut | 4 |
| | Maine | 1 |
| | Massachusetts | 267 |
| | New Hampshire | 1 |
| | New Jersey | 1 |
| | Rhode Island | 1 |
| | Non-Resident Alien | 1 |
| Total | | 277 |
| Junior | Connecticut | 2 |
| | Massachusetts | 172 |
| | Michigan | 1 |
| | New Hampshire | 1 |
| | Vermont | 1 |
| | Non-Resident Alien | 1 |
| Total | | 178 |
| Senior | Massachusetts | 81 |
| | New Hampshire | 1 |
| | New Jersey | 1 |
| | New York | 3 |
| | Pennsylvania | 1 |
| | Rhode Island | 2 |
| Total | | 89 |
| Grand Total | | 1,230 |

Source: IR Official DHE Fall Files

Instructional Programs

Student Enrollment by Major and Student Classification, Fall 2011

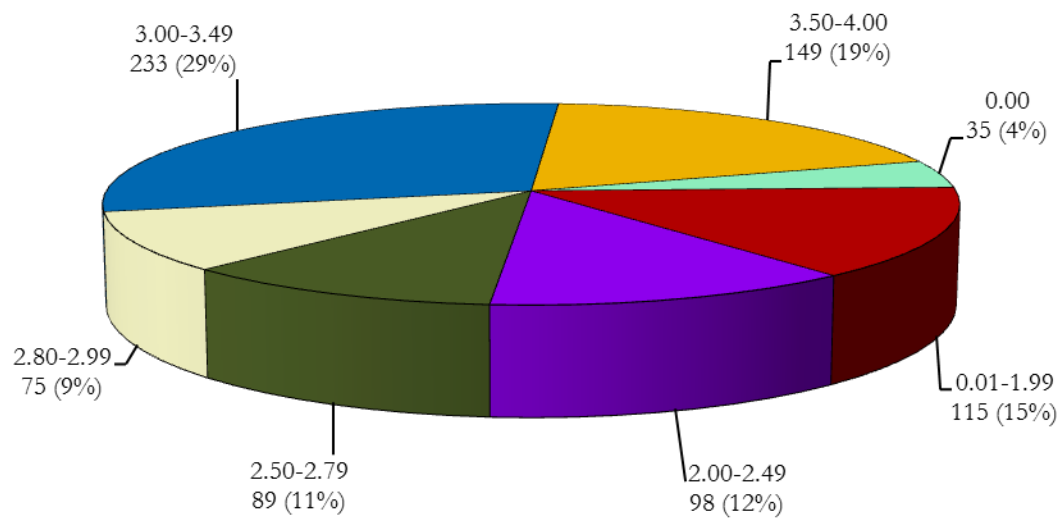
| Major ¹ | Student Classification | | Total |
|--|------------------------|------------|--------------|
| | Undergraduate | Graduate | |
| Biology | 332 | N/A | 332 |
| Biotechnology | 80 | 23 | 103 |
| Business Administration | 797 | N/A | 797 |
| Chemistry | 149 | N/A | 149 |
| Communication | 253 | N/A | 253 |
| Communication Sciences & Disorders | 201 | N/A | 201 |
| Community Health | 117 | N/A | 117 |
| Computer Science | 125 | N/A | 125 |
| Criminal Justice | 416 | N/A | 416 |
| Early Childhood Education | 73 | 15 | 88 |
| Early Childhood Education, Non-Licensure | 24 | N/A | 24 |
| Economics | 35 | N/A | 35 |
| Education | N/A | 11 | 11 |
| (Concentration) Education | N/A | 3 | 3 |
| Health Education | N/A | 8 | 8 |
| Elementary Education | 162 | 25 | 187 |
| English | 168 | 11 | 179 |
| Geography | 28 | N/A | 28 |
| Health Care Administration | N/A | 10 | 10 |
| Health Education | 121 | N/A | 121 |
| History | 198 | 19 | 217 |
| Management | N/A | 28 | 28 |
| Mathematics | 67 | N/A | 67 |
| Middle School Education | N/A | 26 | 26 |
| Moderate Special Needs | N/A | 32 | 32 |
| Natural Science | 42 | N/A | 42 |
| Non-Profit Management | N/A | 26 | 26 |
| Nursing | 300 | 39 | 339 |
| (Concentration) Community & Public Health Nursing | N/A | 29 | 29 |
| Nurse Educator | N/A | 10 | 10 |
| Nursing (Track 1) | 245 | N/A | 245 |
| Nursing (Track 2) | 55 | N/A | 55 |
| Occupational Studies | 103 | N/A | 103 |
| Occupational Therapy | N/A | 62 | 62 |
| Psychology | 414 | N/A | 414 |
| Reading | N/A | 14 | 14 |
| School Leadership & Administration | N/A | 65 | 65 |
| School Psychology | N/A | 28 | 28 |
| Secondary Education | N/A | 74 | 74 |
| Sociology | 83 | N/A | 83 |
| Spanish | 34 | 18 | 52 |
| Speech-Language Pathology | N/A | 90 | 90 |
| Urban Studies | 54 | N/A | 54 |
| Visual & Performing Arts | 52 | N/A | 52 |
| Undeclared | 347 | 0 | 347 |
| Non-Degree Seeking | 502 | 311 | 813 |
| Total | 5,277 | 927 | 6,204 |

¹Includes 1st major only

Source: IR Official DHE Fall Files

Academic Achievement/Learning Outcomes

Grade Distribution of First-time, Full-time, Degree-seeking Freshmen, Fall 2011



Total Number of Full-time Freshmen = 791

Source: IR Official DHE Fall Files

First-time, Full-time Freshmen Retention and Graduation Rates

| Entering Class | Initial Cohort | After 1st Year | | After 2nd Year | | After 3rd Year | | After 4th Year | | After 5th Year | | After 6th Year | | After 7th Year | |
|----------------|------------------------|----------------|-------------------|----------------|-------------------|----------------|-------------------|----------------|-------------------|----------------|------|----------------|------|----------------|------|
| | | N | % | N | % | N | % | N | % | N | % | N | % | N | % |
| 2004 | Continued | 470 | 75.1 | 371 | 59.3 | 341 | 54.6 ¹ | 168 | 26.9 | 49 | 7.8 | 29 | 4.6 | 15 | 2.4 |
| | Dropout (cumulative) | | 24.9 | 40.7 | | | 44.3 | 47.8 | | 50.7 | | 50.2 | | 50.1 | |
| | Graduated (cumulative) | | | | | 7 | 1.1 | 158 | 25.3 | 259 | 41.4 | 282 | 45.1 | 297 | 47.5 |
| 2005 | Continued | 473 | 73.9 ² | 377 | 59.0 ³ | 346 | 54.1 | 161 | 25.2 | 52 | 8.1 | 22 | 3.4 | | |
| | Dropout (cumulative) | | 26.1 | 41.0 | | | 45.2 | 46.3 | | 48.9 | | 49.7 | | | |
| | Graduated (cumulative) | | | | | 4 | 0.6 | 182 | 28.5 | 275 | 43.0 | 300 | 46.9 | | |
| 2006 | Continued | 508 | 76.0 | 430 | 64.4 | 388 | 58.1 | 151 | 22.6 ⁴ | 58 | 8.7 | | | | |
| | Dropout (cumulative) | | 24.0 | 35.6 | | | 41.0 | 44.8 | | 44.8 | | | | | |
| | Graduated (cumulative) | | | | | 6 | 0.9 | 217 | 32.5 | 310 | 46.5 | | | | |
| 2007 | Continued | 513 | 75.7 | 441 | 65.0 | 396 | 58.4 | 150 | 22.1 | | | | | | |
| | Dropout (cumulative) | | 24.3 | 35.0 | | | 40.9 | 43.7 | | | | | | | |
| | Graduated (cumulative) | | | | | 5 | 0.7 | 232 | 34.2 | | | | | | |
| 2008 | Continued | 501 | 76.6 | 425 | 65.0 | 397 | 60.7 | | | | | | | | |
| | Dropout (cumulative) | | 23.4 | 35.0 | | | 38.7 | | | | | | | | |
| | Graduated (cumulative) | | | | | 4 | 0.6 | | | | | | | | |
| 2009 | Continued | 521 | 75.2 | 458 | 66.1 | | | | | | | | | | |
| | Dropout (cumulative) | | 24.8 | 33.9 | | | | | | | | | | | |
| | Graduated (cumulative) | | | | | | | | | | | | | | |
| 2010 | Continued | 644 | 79.8 ⁵ | | | | | | | | | | | | |
| | Dropout (cumulative) | | 20.2 | | | | | | | | | | | | |
| | Graduated (cumulative) | | | | | | | | | | | | | | |

Adjusted cohorts due to deceased students: ¹625, ²640, ³639, ⁴667, ⁵807

Source: WSU Colleague Data System

Degrees Conferred by CIP Code Category, FY 2011

| <i>CIP Code Category</i> | <i>Bachelor</i> | <i>Post-Bacc. Certificate</i> | <i>Master</i> | <i>Post-Masters Certificate</i> |
|---|-----------------|-----------------------------------|---------------|-------------------------------------|
| Adult Health Nurse/Nursing | 14 | | | |
| Bioinformatics | | | | |
| Biology Teacher Education | | 4 | | |
| Biology/Biological Sciences, General | 40 | | | |
| Biotechnology | 12 | | 8 | |
| Business Administration and Management, General | 188 | | | |
| Chemistry Teacher Education | | | 5 | |
| Chemistry, General | 16 | 2 | | |
| Clinical Nurse Specialist | | | 3 | |
| Communication Sciences and Disorders, General | 22 | | | |
| Communication Studies/Speech Communication and Rhetoric | 21 | | | |
| Community Health Services/Liaison/Counseling | 12 | | 6 | |
| Computer and Information Sciences, General | 18 | | | |
| Criminal Justice/ Safety Studies | 64 | | | |
| Early Childhood Education and Teaching | 21 | | 8 | |
| Economics, General | 6 | | | |
| Education, General | | 26 | 12 | |
| Educational Leadership and Administration, General | | | 20 | |
| Elementary Education and Teaching | 30 | 37 | 9 | |
| Elementary and Middle School Administration/Principalship | | 2 | | |
| English Language and Literature, General | 27 | | 9 | |
| English/Language Arts Teacher Education | | 16 | | |
| Foreign Language Teacher Education | | 5 | | |
| Geography | 12 | | | |
| Health Professions and Related Clinical Sciences, Other | 13 | | | |
| Health Services/Allied Health/Health Sciences, General | | 2 | | |
| Health/Health Care Administration/Management | | | 14 | |
| History Teacher Education | | 7 | | |
| History, General | 37 | | 19 | |
| Junior High/Intermediate/Middle School Education & Teaching | | | 2 | |
| Kindergarten/Preschool Education and Teaching | | 18 | | |
| Mass Communication/Media Studies | 29 | | | |
| Mathematics Teacher Education | | 12 | | |
| Mathematics, General | 6 | | | |
| Non-Profit/Public/Organizational Management | | | 6 | |
| Nursing- Registered Nurse Training (RN, ASN, BSN, MSN) | 51 | | | |
| Occupational Therapy/Therapist | 13 | | 11 | |
| Physical Sciences | 26 | | | |
| Political Science And Government, General | | | | |
| Psychology, General | 97 | | | |
| Reading Teacher Education | | 2 | 2 | |
| School Psychology | | | 3 | 3 |
| Science Teacher Education/General Science Teacher Education | | 4 | | |
| Secondary Education and Teaching | | | 1 | |
| Social Studies Teacher Education | | 4 | | |
| Sociology | 11 | | | |
| Spanish Language And Literature | 10 | | 13 | |
| Special Education and Teaching, General | | 1 | | |
| Special Education and Teaching, Other | | 28 | | |
| Speech Communication and Rhetoric | | | | |
| Speech-Language Pathology/Pathologist | | | 28 | |
| Teacher Education, Multiple Levels | | 17 | | |
| Urban Studies/Affairs | 11 | | | |
| Visual and Performing Arts | 2 | | | |
| Total | 809 | 187 | 179 | 3 |

Source: IR Official DHE Degrees Conferred Files

Personnel Profile

Employees/Staff, Fall 2011

| EEO Category | Total | | | | | | | | | | Male | Female |
|-------------------------|-------------|----------|------------------|-------|------------------|------------------|-------------|-----|---------|-----|------|--------|
| | Nonresident | | American Indian/ | | Native Hawaiian/ | | Two or more | | Unknown | | | |
| | Alien | Hispanic | Alaska Native | Asian | Black | Pacific Islander | White | rac | | | | |
| Executive or Management | 0 | 3 | 0 | 1 | 1 | 0 | 67 | 0 | 0 | 28 | 45 | |
| Professionals | 0 | 4 | 0 | 4 | 1 | 0 | 74 | 0 | 0 | 28 | 55 | |
| Tech. Professionals | 0 | 1 | 0 | 1 | 2 | 0 | 17 | 0 | 0 | 8 | 13 | |
| Clerical or Secretarial | 0 | 2 | 0 | 2 | 3 | 0 | 68 | 0 | 1 | 7 | 69 | |
| Skilled Crafts | 0 | 2 | 0 | 0 | 0 | 0 | 11 | 0 | 0 | 13 | 0 | |
| Service Maintenance | 0 | 10 | 0 | 0 | 3 | 0 | 45 | 0 | 1 | 53 | 6 | |
| Total | 0 | 22 | 0 | 8 | 10 | 0 | 282 | 0 | 2 | 137 | 188 | |

| EEO Category | Full-Time | | | | | | | | | | |
|-------------------------|-------------|----------|------------------|-------|------------------|------------------|-------------|-----|---------|------|--------|
| | Nonresident | | American Indian/ | | Native Hawaiian/ | | Two or more | | | | |
| | Alien | Hispanic | Alaska Native | Asian | Black | Pacific Islander | White | rac | Unknown | Male | Female |
| Executive or Management | 0 | 3 | 0 | 1 | 1 | 0 | 67 | 0 | 0 | 28 | 45 |
| Professionals | 0 | 4 | 0 | 4 | 1 | 0 | 71 | 0 | 0 | 27 | 53 |
| Tech. Professionals | 0 | 1 | 0 | 1 | 2 | 0 | 14 | 0 | 0 | 6 | 12 |
| Clerical or Secretarial | 0 | 2 | 0 | 2 | 3 | 0 | 59 | 0 | 1 | 6 | 61 |
| Skilled Crafts | 0 | 2 | 0 | 0 | 0 | 0 | 11 | 0 | 0 | 13 | 0 |
| Service Maintenance | 0 | 10 | 0 | 0 | 3 | 0 | 45 | 0 | 1 | 53 | 6 |
| Total | 0 | 22 | 0 | 8 | 10 | 0 | 267 | 0 | 2 | 133 | 177 |

| EEO Category | Part-Time | | | | | | | | | | |
|-------------------------|-------------|----------|------------------|-------|------------------|------------------|-------------|-----|---------|------|--------|
| | Nonresident | | American Indian/ | | Native Hawaiian/ | | Two or more | | | | |
| | Alien | Hispanic | Alaska Native | Asian | Black | Pacific Islander | White | rac | Unknown | Male | Female |
| Executive or Management | 0 | 0 | 0 | 0 | 0 | 0 | 0 | 0 | 0 | 0 | 0 |
| Professionals | 0 | 0 | 0 | 0 | 0 | 0 | 3 | 0 | 0 | 1 | 2 |
| Tech. Professionals | 0 | 0 | 0 | 0 | 0 | 0 | 3 | 0 | 0 | 2 | 1 |
| Clerical or Secretarial | 0 | 0 | 0 | 0 | 0 | 0 | 9 | 0 | 0 | 1 | 8 |
| Skilled Crafts | 0 | 0 | 0 | 0 | 0 | 0 | 0 | 0 | 0 | 0 | 0 |
| Service Maintenance | 0 | 0 | 0 | 0 | 0 | 0 | 0 | 0 | 0 | 0 | 0 |
| Total | 0 | 0 | 0 | 0 | 0 | 0 | 15 | 0 | 0 | 4 | 11 |

Source: IR Official IPEDS HR Files

Faculty by Institution of Highest Degree, Fall 2011

| <i>Awarding Institution</i> | <i>Graduates</i> | <i>Awarding Institution</i> | <i>Graduates</i> |
|--------------------------------------|------------------|--|------------------|
| University of Massachusetts-Amherst | 19 | Illinois State University | 1 |
| Boston University | 14 | Mass College of Liberal Arts | 1 |
| University of Connecticut | 11 | Massachusetts Institute of Technology | 1 |
| Clark University | 8 | McGill University | 1 |
| University of California | 7 | Moscow University | 1 |
| Worcester State College | 7 | New York University | 1 |
| Brandeis University | 4 | Nichols College | 1 |
| Nova College | 4 | North Carolina State University | 1 |
| University of Rhode Island | 4 | Northwestern University | 1 |
| Assumption College | 3 | Ohio State University | 1 |
| Boston College | 3 | Penn State University | 1 |
| Indiana University | 3 | Purdue University | 1 |
| University of Michigan | 3 | Rhode Island School of Design | 1 |
| University of Minnesota-Minneapolis | 3 | Rice University | 1 |
| University of New Hampshire | 3 | Rochester Institute of Technology | 1 |
| Colorado State University | 2 | Southern Illinois University | 1 |
| Columbia University-Columbia College | 2 | State University New York-Albany | 1 |
| Harvard University | 2 | State University New York-Stony Brook | 1 |
| Indiana University-Pennsylvania | 2 | Thomas Jefferson University | 1 |
| Michigan State University | 2 | University of Massachusetts Memorial Medical Group | 1 |
| Northeastern University | 2 | Union College | 1 |
| Rutgers University | 2 | University of Alabama | 1 |
| State University New York-Buffalo | 2 | University of Colorado | 1 |
| Temple University | 2 | University of Iowa | 1 |
| University of Cincinnati | 2 | University of Kansas | 1 |
| University of Georgia | 2 | University of Liverpool | 1 |
| University of Maryland | 2 | University of Miami | 1 |
| University of Massachusetts-Boston | 2 | University of Minnesota | 1 |
| Vanderbilt University | 2 | University of Mississippi | 1 |
| American University | 1 | University of North Carolina | 1 |
| Arizona State University | 1 | University of Notre Dame | 1 |
| Bentley College | 1 | University of Oklahoma | 1 |
| Brown University | 1 | University of Pennsylvania | 1 |
| Carnegie-Mellon University | 1 | University of Pretoria | 1 |
| Central Michigan University | 1 | University of South Carolina | 1 |
| City University of New York | 1 | University of Texas-Austin | 1 |
| Clark Atlanta University | 1 | University of Tours-Paris | 1 |
| College of William and Mary | 1 | University of Vermont | 1 |
| Cornell University | 1 | University of Virginia | 1 |
| East Carolina University | 1 | University of Washington | 1 |
| Eastman School of Music | 1 | University of Waterloo | 1 |
| Fitchburg State College | 1 | University of Wisconsin | 1 |
| Florida International University | 1 | Washington State University | 1 |
| Florida State University | 1 | Wesleyan University | 1 |
| Framingham State College | 1 | Worcester Polytechnic Institute | 1 |
| Georgetown University | 1 | Yale University | 1 |
| | | Total | 187 |

Source: IR Official DHE HR Files

Full-time Faculty by Department and Rank, Fall 2011

| <i>Department</i> | <i>Professor</i> | <i>Associate Professor</i> | <i>Assistant Professor</i> | <i>Instructor</i> | <i>Total</i> |
|------------------------------------|------------------|--------------------------------|--------------------------------|-------------------|--------------|
| Biology | 6 | 3 | 2 | 0 | 11 |
| Business and Economics | 12 | 3 | 3 | 0 | 18 |
| Chemistry | 3 | 3 | 2 | 0 | 8 |
| Communication | 5 | 2 | 2 | 0 | 9 |
| Communication Sciences & Disorders | 2 | 3 | 1 | 0 | 6 |
| Computer Science | 2 | 2 | 0 | 0 | 4 |
| Criminal Justice | 0 | 2 | 4 | 0 | 6 |
| Earth Science | 0 | 5 | 3 | 1 | 9 |
| Education | 5 | 4 | 4 | 1 | 14 |
| English | 4 | 6 | 3 | 0 | 13 |
| Health Science | 0 | 4 | 1 | 0 | 5 |
| History & Political Science | 2 | 6 | 5 | 0 | 13 |
| Mathematics | 1 | 5 | 3 | 1 | 10 |
| Nursing | 3 | 2 | 2 | 6 | 13 |
| Occupational Therapy | 3 | 0 | 3 | 0 | 6 |
| Philosophy | 4 | 0 | 0 | 0 | 4 |
| Psychology | 4 | 4 | 5 | 0 | 13 |
| Sociology | 0 | 2 | 3 | 1 | 6 |
| Urban Studies | 3 | 1 | 0 | 0 | 4 |
| Visual & Performing Arts | 4 | 3 | 3 | 0 | 10 |
| World Languages | 3 | 1 | 1 | 0 | 5 |
| Total | 66 | 61 | 50 | 10 | 187 |

Source: IR Official DHE HR Files

Full-time Faculty by Gender and Ethnicity, Fall 2011

| <i>Ethnicity</i> | <i>Male</i> | <i>Female</i> | <i>Total</i> |
|----------------------------------|-------------|---------------|--------------|
| Non-Resident Alien | 0 | 0 | 0 |
| Hispanic | 5 | 4 | 9 |
| American Indian/Alaskan Native | 0 | 0 | 0 |
| Asian | 6 | 12 | 18 |
| Black | 6 | 3 | 9 |
| Native Hawaiian/Pacific Islander | 0 | 0 | 0 |
| White | 62 | 88 | 150 |
| Two or more races | 0 | 0 | 0 |
| Race/ethnicity unknown | 1 | 0 | 1 |
| Total | 80 | 107 | 187 |

Full-time Faculty by Gender and Tenure, Fall 2011

| <i>Tenure Status</i> | <i>Male</i> | <i>Female</i> | <i>Total</i> |
|----------------------|-------------|---------------|--------------|
| Tenured | 58 | 69 | 127 |
| Non-tenured | 19 | 29 | 48 |
| Not on tenure track | 3 | 9 | 12 |
| Total | 80 | 107 | 187 |

Full-time Faculty by Gender and Rank, Fall 2011

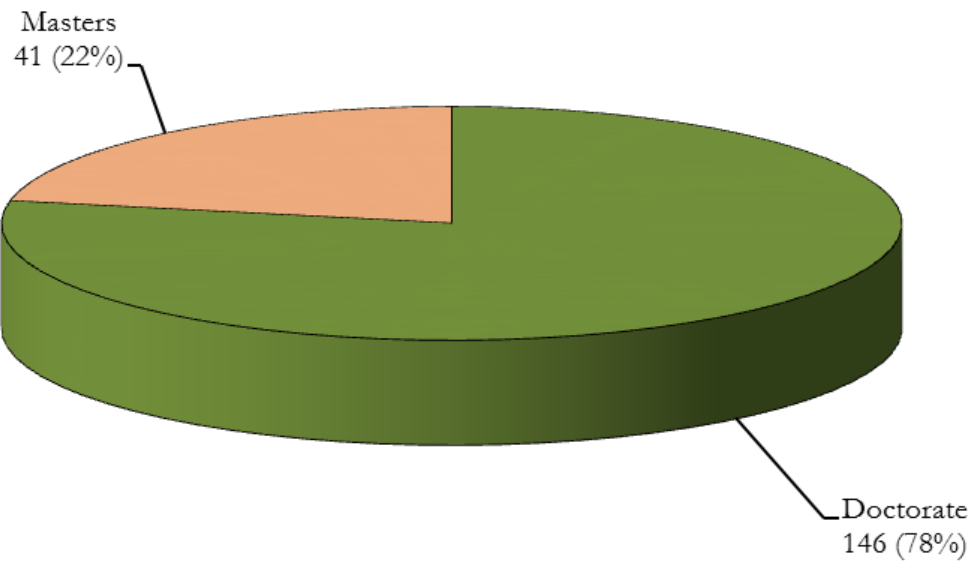
| <i>Rank</i> | <i>Male</i> | <i>Female</i> | <i>Total</i> |
|---------------------|-------------|---------------|--------------|
| Professor | 27 | 39 | 66 |
| Associate Professor | 33 | 28 | 61 |
| Assistant Professor | 20 | 30 | 50 |
| Instructor | 0 | 10 | 10 |
| Total | 80 | 107 | 187 |

Full-time Faculty by Age Range and Rank, Fall 2011

| <i>Age Range</i> | <i>Professor</i> | <i>Associate Professor</i> | <i>Assistant Professor</i> | <i>Instructor</i> | <i>Total</i> |
|------------------|------------------|----------------------------|----------------------------|-------------------|--------------|
| Under 30 | 0 | 0 | 1 | 0 | 1 |
| 30 - 39 | 0 | 7 | 26 | 2 | 35 |
| 40 - 49 | 13 | 18 | 10 | 2 | 43 |
| 50 - 59 | 23 | 12 | 6 | 6 | 47 |
| 60 - 69 | 21 | 14 | 6 | 0 | 41 |
| 70 and over | 9 | 10 | 0 | 0 | 19 |
| Unknown | 0 | 0 | 1 | 0 | 1 |
| Total | 66 | 61 | 50 | 10 | 187 |

Source: IR Official IPEDS HR Files

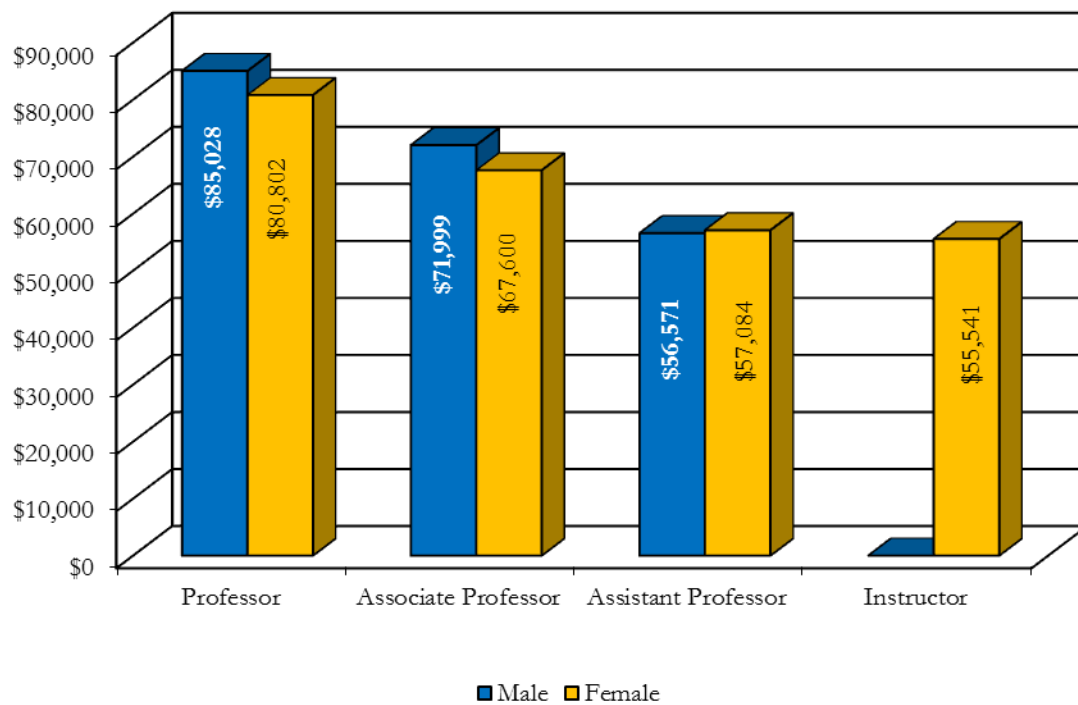
Full-time Faculty by Highest Degree Earned, Fall 2011



Source: IR Official IPEDS HR Files

Average Salaries of Full-time Faculty by Rank and Gender, Fall 2011

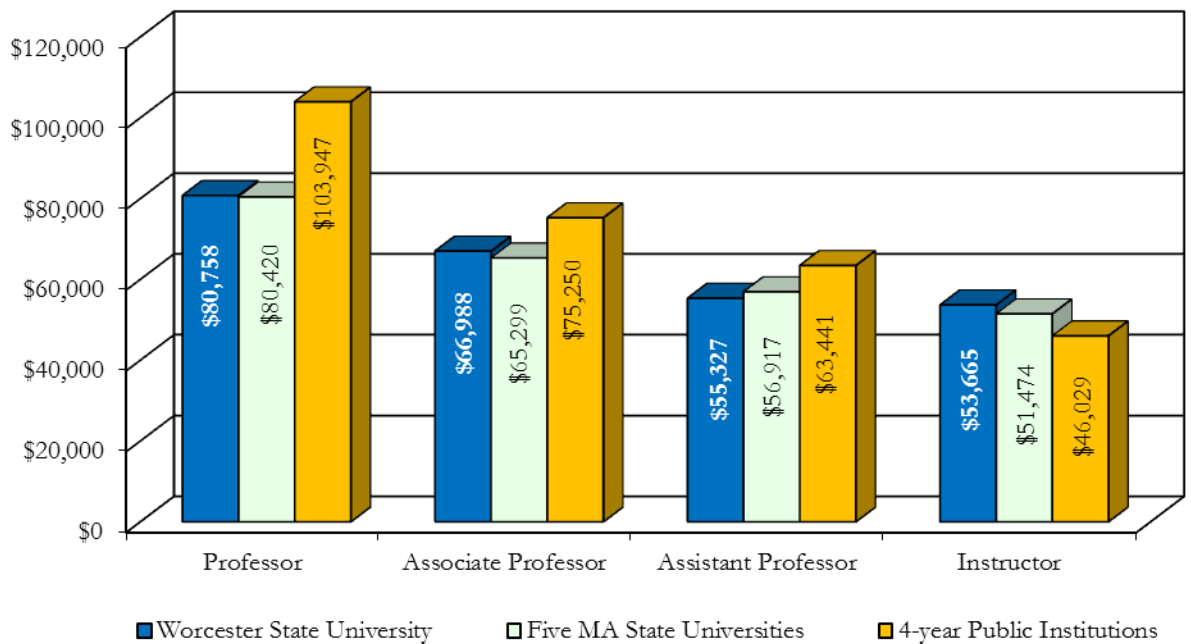
| <i>Rank</i> | <i>Male</i> | <i>Female</i> | <i>Total</i> |
|---------------------|-------------|---------------|--------------|
| Professor | \$85,028 | \$80,802 | \$82,531 |
| Associate Professor | \$71,999 | \$67,600 | \$69,979 |
| Assistant Professor | \$56,571 | \$57,084 | \$56,879 |
| Instructor | N/A | \$55,541 | \$55,541 |



Source: IR Official IPEDS HR Files

Average Faculty Salaries Comparison, AY 2009-2010*

| <i>Rank</i> | <i>Worcester State University</i> | <i>Five MA State Universities</i> | <i>4-year Public Institutions</i> |
|---------------------|-----------------------------------|-----------------------------------|-----------------------------------|
| Professor | \$80,758 | \$80,420 | \$103,947 |
| Associate Professor | \$66,988 | \$65,299 | \$75,250 |
| Assistant Professor | \$55,327 | \$56,917 | \$63,441 |
| Instructor | \$53,665 | \$51,474 | \$46,029 |



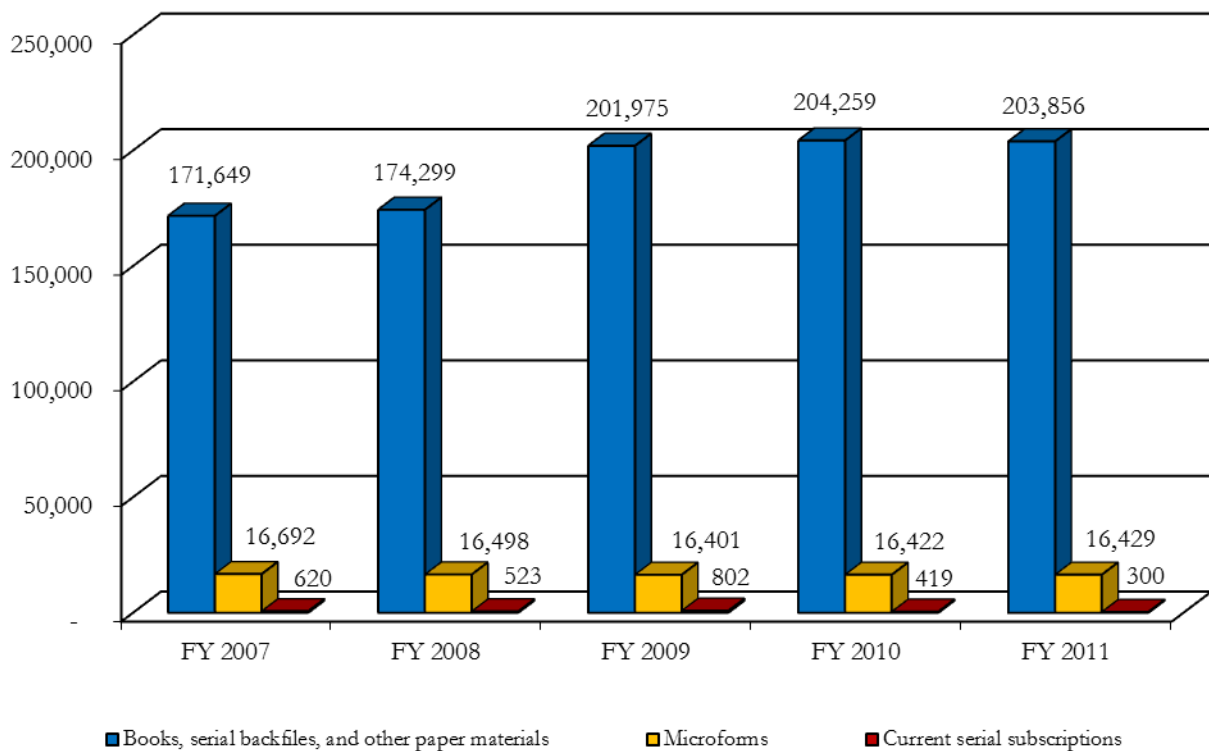
*Salary comparison from AY 2009-2010. Updated information from the federal government was not available at time of publication.

Source: IR Official IPEDS Salary Files

Library Information

Library Holdings, FY 2007-2011

| Category | FY 2007 | FY 2008 | FY 2009 | FY 2010 | FY 2011 |
|--|---------|---------|---------|---------|---------|
| Books, serial backfiles, and other paper materials | 171,649 | 174,299 | 201,975 | 204,259 | 203,856 |
| Microforms | 16,692 | 16,498 | 16,401 | 16,422 | 16,429 |
| Current serial subscriptions | 620 | 523 | 802 | 419 | 300 |

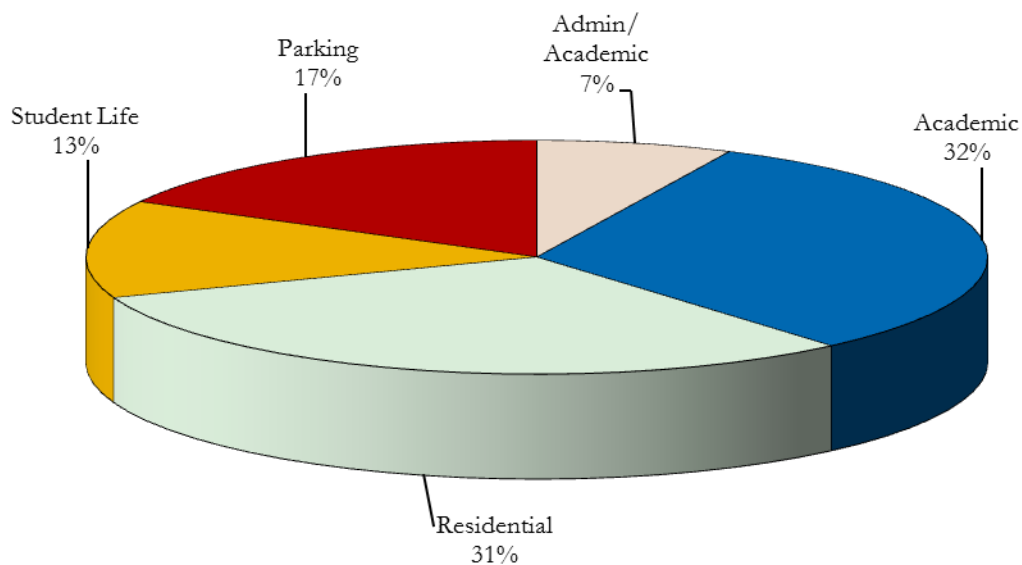


Source: NCES Library Reports

Facilities Information

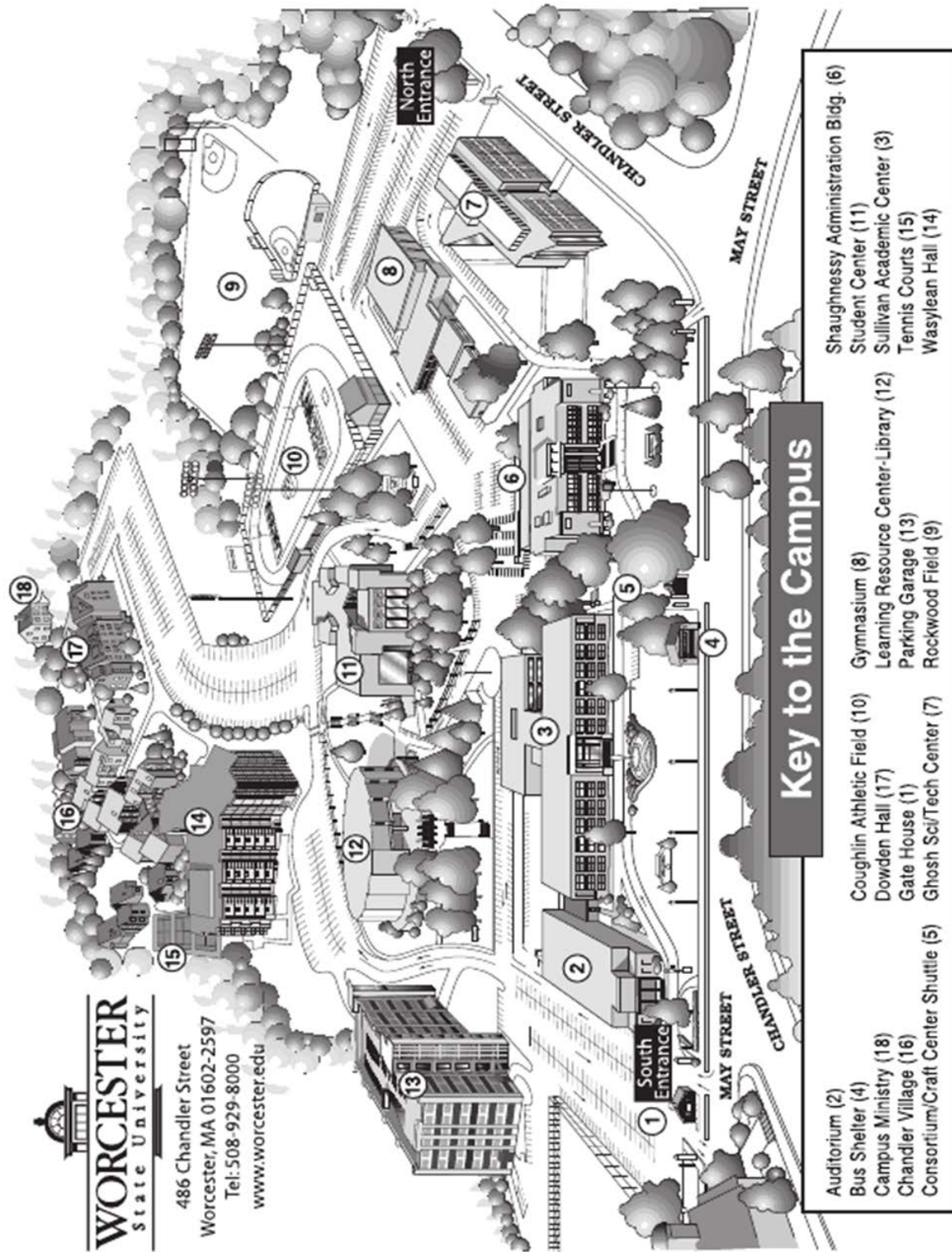
Physical Plant Facilities, Fall 2011

| <i>Building Name</i> | <i>Primary Use</i> | <i>Gross sq. ft.</i> | <i>Assignable sq. ft.</i> | <i>Year</i> |
|-----------------------------|-------------------------|----------------------|---------------------------|-------------|
| 1. Administration | Administrative | 67,066 | 37,695 | 1932 |
| 2. Learning Resource Center | Library, Classrooms | 113,335 | 72,815 | 1968 |
| 3. 96 Chicopee Street | Storage | 1,170 | 936 | 1950 |
| 4. Sullivan Academic Center | Academic | 110,690 | 72,725 | 1965 |
| 5. Science Tech Center | Academic | 97,300 | 71,072 | 2000 |
| 6. Student Center | Student Affairs, Dining | 71,416 | 46,430 | 1978 |
| 7. Gymnasium | Athletics, Art | 65,676 | 41,155 | 1958 |
| 8. 102 Chicopee Street | Vacant | 1,120 | 895 | 1940 |
| 9. 134 Glendale Street | Vacant | 837 | 670 | 1952 |
| 10. 17 Candlewood Street | Campus Ministry | 1,200 | 960 | 1927 |
| 11. Chandler Village | Housing | 103,560 | 79,490 | 1973 |
| 12. Dowden Hall | Housing | 98,555 | 56,910 | 1990 |
| 13. Wasylean Hall | Housing | 109,000 | 70,510 | 2004 |
| 14. Parking Garage | Parking | 174,032 | 166,592 | 2007 |



Source: Office of Facilities

Campus Map



Source: Printing and Publications

Institutional Advancement

Foundation Board of Directors 2011-2012

Gregg H. Rosen '83, *President*
 Craig A. Bovaird '77, *Vice President*
 Mary C. Ritter, *Vice President*
 Edward L. Sherr, *Treasurer*
 Kathleen Eichelroth, CPA, *Assistant Treasurer*
 Thomas M. McNamara '94, *Clerk*
 George H. Albro '65, M.Ed. '68
 Mary K. Alexander, Ed.D.
 David E. Bedard '74
 Keith E. Blanchette '98, CPA
 Jean M. Borgatti, Ph.D.
 John P. Brissette '88
 Derek S. Brindisi '99
 Matthew Cote
 Leslie K. Cutler
 Jill C. Dagilis '78
 Andrew Davis
 Julia Dvorko, Ph.D.
 Mary Burke Fallon
 James D. Glickman
 Lillian R. Goodman, Ed.D.
 Richard E. Greene '54, Ed.D.
 Maryanne H. Hammond '69, M.Ed. '72
 Kimberly M. Harmon, R.N. '95
 Kenneth P. Heekin
 Charlotte Z. Klein '75
 Barry M. Maloney
 Dorothy J. Manning, M.Ed. '88
 Daniel J. Mastrototaro
 Kerri Aleksiewicz Melley
 Janet Wilson Moore
 Suzanne Singh Nebelung, M.Ed. '00
 William F. O'Neil, M.Ed. '63, Ed.D.
 Alan O. Osmolowski, '91, CPA
 David H. Quist, Ed.D.
 R. David Richer
 Robert J. Spain '78
 George W. Tetler III
 Richard E. Thomas
 Steven J. Ward '76

Alumni Association's Advisory Board 2011-2012

Vincent J. Matulaitis '66, *President*
 Kristina M. Jackson '93, *Vice President*
 Patricia A. Pennucci '62, M.Ed. '67, *Secretary*
 Margaret C. Farrey '54, M.Ed. '78, *Executive Committee*
 John J. Brown III '02, *Executive Committee*

Directors 2011-2012

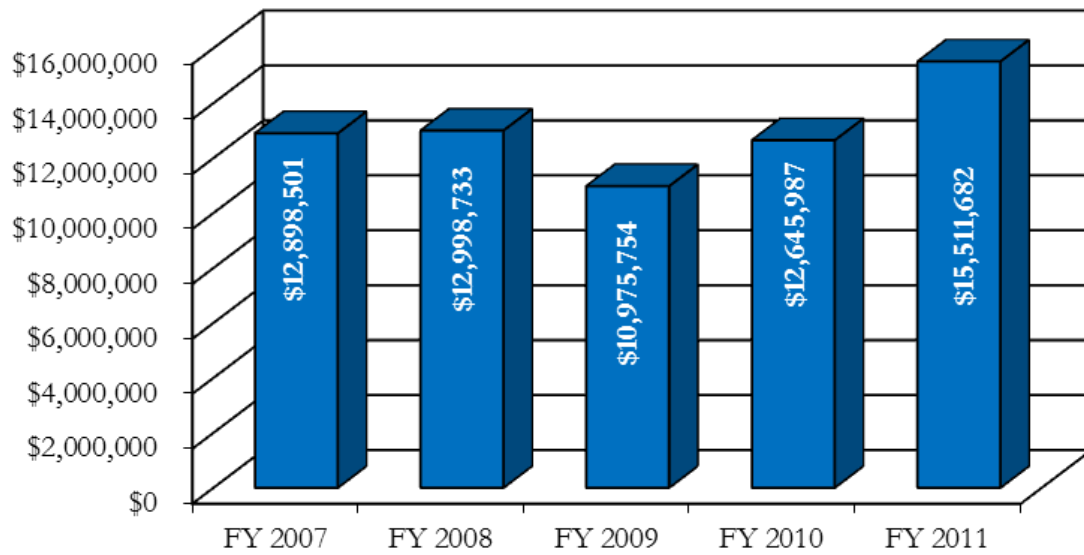
Mark A. Aucoin '86, M.Ed. '00
 Michael J. Borowiec '10
 Derek S. Brindisi '99
 Joseph C. Deeley '56, M.Ed. '58, Colonel,
 United States Air Force, Retired
 Hugh F. Donohue '70
 Tara A. Hancock, M.S. '06
 Danielle M. Horn '03
 Joshua L. Katz '06
 Cathleen M. Liberty '08
 Kwadwo A. Osei '06
 Amy L. Peterson '03
 Amanda M. Riik '02
 Maureen D. Shamgochian '80, Ph.D.
 Elaine G. Tateronis '63, M.Ed. '74, Ed.D.
 Nicole E. Valentine '96

 Ronald R. Valerio '75, *Alumni Representative to
 the Board of Trustees*

 Patrick Hare '12, *SGA President/Student
 Representative*

Source: Office of Institutional Advancement

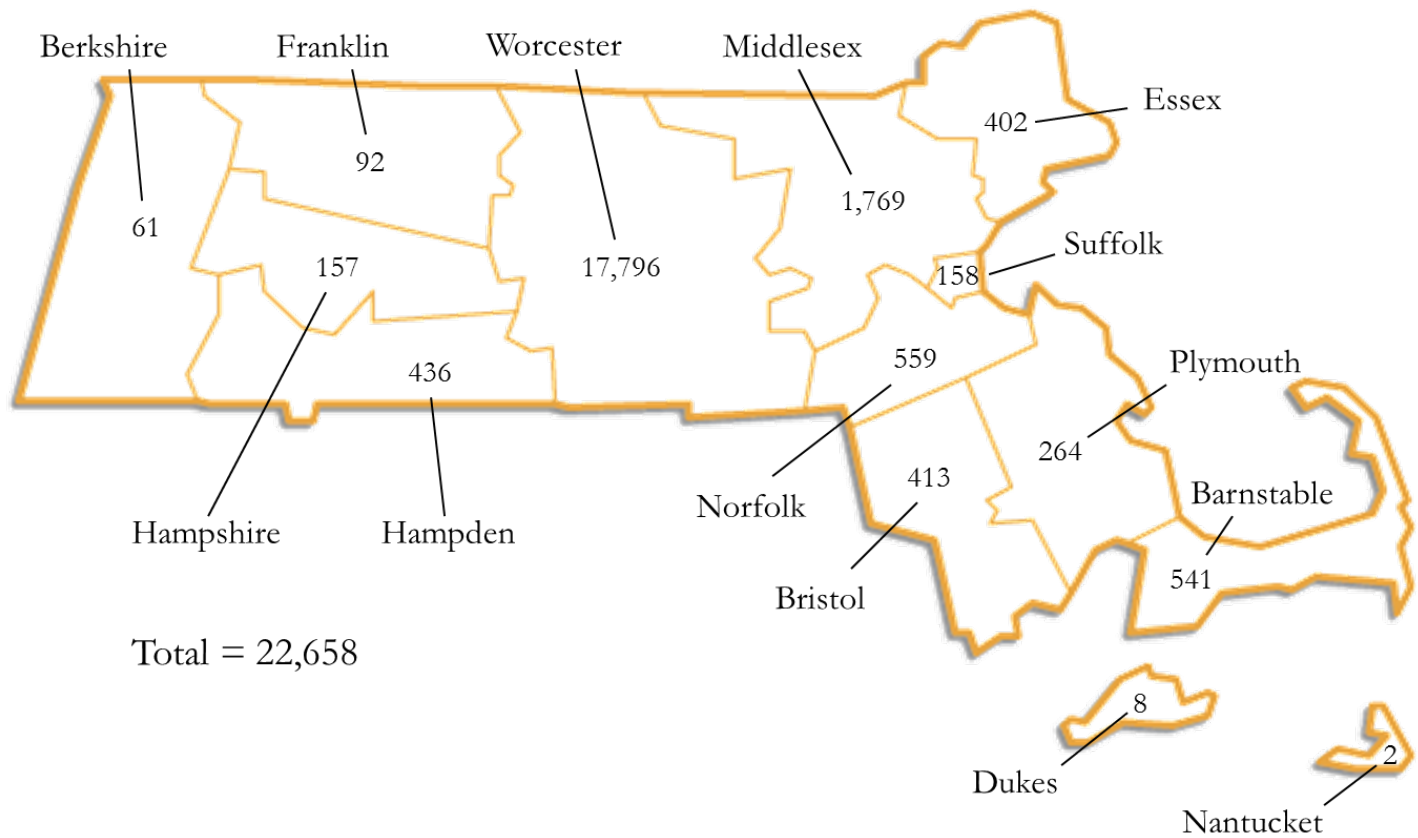
Total Market Value of Funds Under Management¹, FY 2007-FY 2011



¹ Total Net Asset Per Official Audit

Source: Office of Institutional Advancement

Alumni by Massachusetts County of Residence, 2011

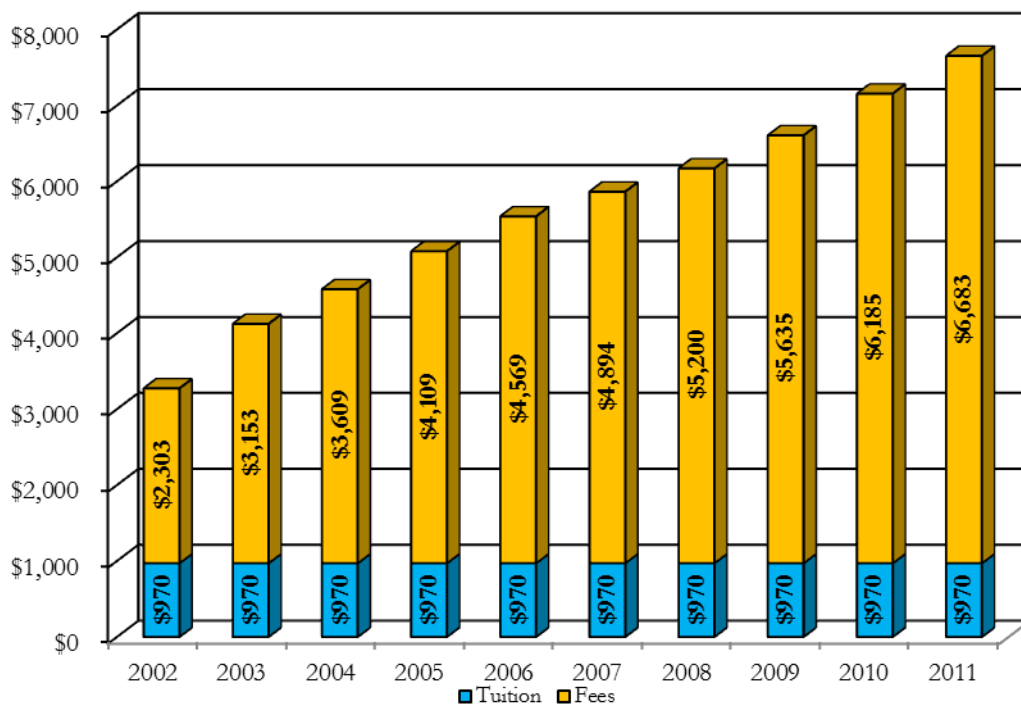


Source: Office of Institutional Advancement

Financial Information

Tuition and Fees per Academic Year, 2002-2011

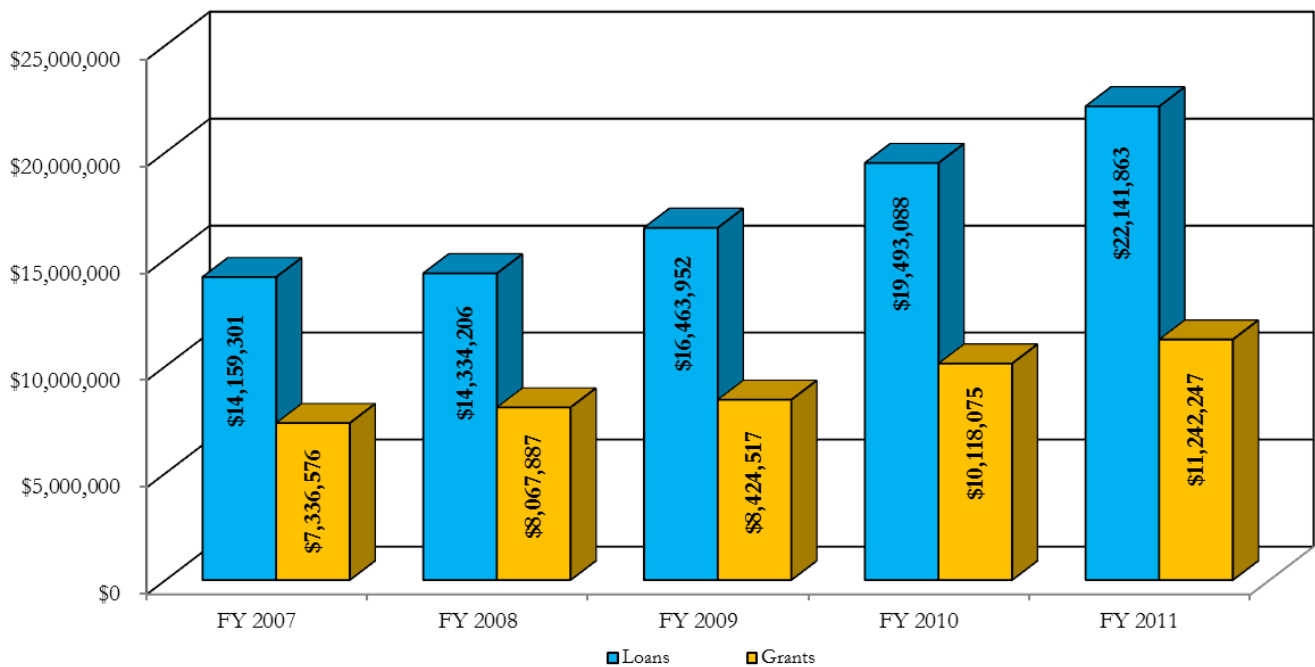
| | <i>AY</i> 2002 | <i>AY</i> 2003 | <i>AY</i> 2004 | <i>AY</i> 2005 | <i>AY</i> 2006 | <i>AY</i> 2007 | <i>AY</i> 2008 | <i>AY</i> 2009 | <i>AY</i> 2010 | <i>AY</i> 2011 |
|--------------|-------------------|-------------------|-------------------|-------------------|-------------------|-------------------|-------------------|-------------------|-------------------|-------------------|
| Tuition | \$970 | \$970 | \$970 | \$970 | \$970 | \$970 | \$970 | \$970 | \$970 | \$970 |
| Fees | \$2,303 | \$3,153 | \$3,609 | \$4,109 | \$4,569 | \$4,894 | \$5,200 | \$5,635 | \$6,185 | \$6,683 |
| Total | \$3,273 | \$4,123 | \$4,579 | \$5,079 | \$5,539 | \$5,864 | \$6,170 | \$6,605 | \$7,155 | \$7,653 |



Source: Office of Administration and Finance

Financial Aid Awards, FY 2007-FY 2011

| | <i>FY 2007</i> | <i>FY 2008</i> | <i>FY 2009</i> | <i>FY 2010</i> | <i>FY 2011</i> |
|--------------|---------------------|---------------------|---------------------|---------------------|---------------------|
| Loans | \$14,159,301 | \$14,334,206 | \$16,463,952 | \$19,493,088 | \$22,141,863 |
| Grants | \$7,336,576 | \$8,067,887 | \$8,424,517 | \$10,118,075 | \$11,242,247 |
| Total | \$21,495,877 | \$22,402,093 | \$24,888,469 | \$29,611,163 | \$33,384,110 |



Source: Office of Financial Aid

Revenues and Expenditures, FY 2009-FY 2011

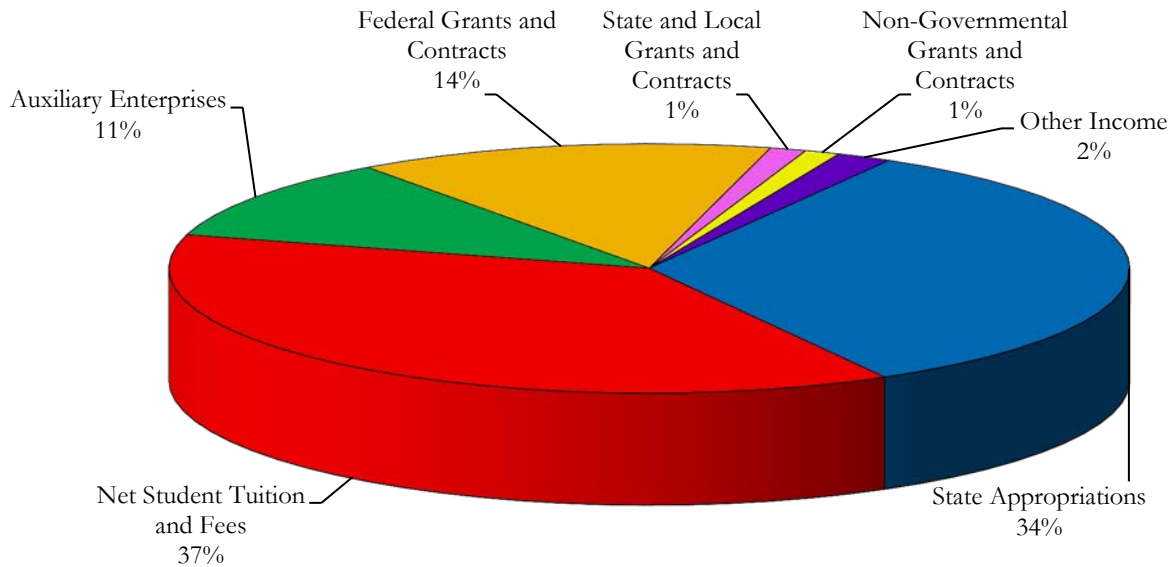
| REVENUES | FY 2011 | FY 2010 | FY 2009 |
|--|------------------------|------------------------|------------------------|
| Operating Revenues | | | |
| Student Tuition and fees | \$ 36,322,718 | \$ 33,228,317 | \$ 30,480,355 |
| Less: Scholarship discounts and allowance | 7,347,390 | 6,464,179 | 5,242,157 |
| Net student tuition and fees | 28,975,328 | 26,764,138 | 25,238,198 |
| Federal grants and contracts | 10,867,450 | 8,586,193 | 3,464,889 |
| State and local grants and contracts | 944,511 | 1,296,211 | 1,796,950 |
| Nongovernmental grants and contracts | 910,612 | 533,196 | 866,656 |
| Auxiliary enterprises | 8,277,300 | 6,742,819 | 6,405,207 |
| Other operating revenues | 1,127,693 | 1,217,214 | 1,217,067 |
| Total operating revenues | <u>\$ 51,102,894</u> | <u>\$ 45,159,771</u> | <u>\$ 38,988,967</u> |
| EXPENSES | | | |
| Operating expenses | | | |
| Instruction | \$ 28,317,953 | \$ 26,205,866 | \$ 25,228,769 |
| Public service | 466,426 | 491,683 | 450,862 |
| Academic support | 5,864,229 | 5,215,746 | 4,493,709 |
| Student services | 6,115,465 | 5,925,693 | 5,938,335 |
| Institutional support | 9,339,162 | 8,025,540 | 7,722,064 |
| Operation and maintenance of plant | 8,416,670 | 7,412,106 | 6,932,730 |
| Scholarship | 1,267,657 | 1,309,597 | 1,073,892 |
| Depreciation | 4,296,608 | 3,389,333 | 3,149,953 |
| Debt service | 591,101 | 601,318 | 514,534 |
| Auxiliary enterprises | 8,127,535 | 6,355,184 | 5,878,959 |
| Total operating expenses | <u>\$ 72,802,806</u> | <u>\$ 64,932,066</u> | <u>\$ 61,383,807</u> |
| Operating loss | <u>\$ (21,698,912)</u> | <u>\$ (19,772,295)</u> | <u>\$ (23,394,840)</u> |
| NONOPERATING REVENUES | | | |
| State appropriations | \$ 25,931,430 | \$ 21,428,433 | \$ 25,909,130 |
| Interest and investment income | 307,776 | 606,154 | 723,115 |
| Other nonoperating revenues(expenses) | 3,241 | 1,474 | (4,046) |
| Net nonoperating revenues | <u>\$ 26,242,447</u> | <u>\$ 22,036,061</u> | <u>\$ 26,628,199</u> |
| Income before other revenues,expenses, gains or losses | \$ 4,543,535 | \$ 2,263,766 | \$ 4,233,359 |
| Capital appropriations | 102,000 | 488,046 | 12,976,819 |
| Increase in net assets | 4,645,535 | 2,751,812 | 17,210,178 |
| NET ASSETS | | | |
| Beginning of year | <u>\$ 82,517,422</u> | <u>\$ 79,765,610</u> | <u>\$ 62,555,432</u> |
| End of year | <u>\$ 87,162,957</u> | <u>\$ 82,517,422</u> | <u>\$ 79,765,610</u> |

Source: Financial Statements year ended June 30, 2011, 2010 and 2009, and Independent Auditor's Report

Fund Revenues by Source – FY 2011

REVENUES

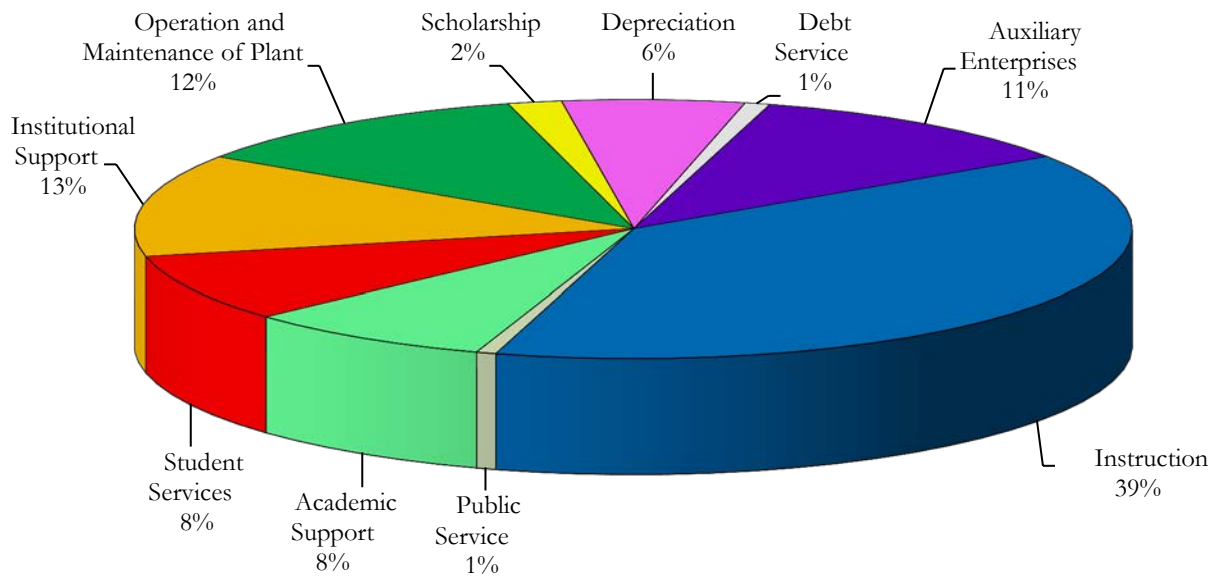
Total = \$77,345,341



Fund Expenditures by Functions – FY 2011

EXPENSES

Total = \$72,802,806



Source: Financial Statements year ended June 30, 2011, 2010 and 2009, and Independent Auditor's Report

Office of Institutional Research

Phone: (508) 929-8121

Fax: (508) 929-8185



Find Your Place at WSU