



FACT BOOK 2009



Front Page Photo: Administration Building by John Horner

Fact Book 2009



**Office of Institutional Research
Worcester State College
486 Chandler Street
Worcester, Massachusetts 01602-2597
508-929-8121**

Prepared by:
Kyung Im Noh, Database Coordinator/Research Analyst

Kenneth Smith, Director of Institutional Research

Worcester State College is an equal employment/education opportunity institution.



Table of Contents

INTRODUCTION

President's Message	1
Board and Administration	2
Department Chairs	4
Organizational Chart	5

GENERAL INFORMATION

Worcester State College Snapshot, Fall 2009	11
Brief History of WSC	12
Core Values	13
Vision	13
Mission	13
Strategic Priorities FY 2004 – 2009	14
Accreditation	18

STUDENT PROFILE

Longitudinal Enrollment, Fall 2000-Fall 2009	19
Students by Country of Residence, Fall 2009	20
Students by State of Residence, Fall 2009	21
Students by County of Residence, Fall 2009	22
Age of Degree-seeking, First-time Freshmen, Fall 2009	23
High School GPA of Degree-seeking, First-time Freshmen, Fall 2009	23
SAT Scores of Degree-seeking, First-time Freshmen, Fall 2009	24
Average Combined SAT Score, Fall 2009	24
Gender and Ethnicity of Degree-seeking, First-time Freshmen, Fall 2009	25
Age of New Degree-seeking, Transfer Students, Fall 2009	26
Ethnicity of New Degree-seeking Transfer Students, Fall 2009	26
Transfer Institutions, Fall 2009	27
Majors of New Degree-seeking Transfer Students, Fall 2009	28
Ethnicity of Full-time Students, Fall 2009	29
Ethnicity of Part-time Students, Fall 2009	29
Gender of Full-time Students, Fall 2009	30
Gender of Part-time Students, Fall 2009	30
Total Enrollment by Student Classification, Fall 2009	31
On-Campus Housing by State of Residence and Class, Fall 2009	32

INSTRUCTIONAL PROGRAMS

Student Enrollment by Major and Student Classification, Fall 2009	33
---	----

ACADEMIC ACHIEVEMENT/LEARNING OUTCOMES

Grade Distribution of First-time Freshmen, Fall 2009	35
Retention and Graduation Rates	36
Degrees Conferred by CIP Code Category, 2009	37

PERSONNEL PROFILE

Employees/Staff, Fall 2009	39
Faculty by Highest Degree, Fall 2009	40
Full-time Faculty by Department and Rank, Fall 2009	41
Full-time Faculty by Gender and Ethnicity, Fall 2009	42
Full-time Faculty by Gender and Tenure, Fall 2009	42
Full-time Faculty by Gender and Rank, Fall 2009	42
Full-time Faculty by Rank and Age Range, Fall 2009	42
Full-time Faculty – Highest Degree Earned, Fall 2009	43
Average Salaries of Full-time Faculty by Rank and Gender, Fall 2009	44
Average Faculty Salaries Comparison, AY 2008-2009	45

LIBRARY INFORMATION

Library Holdings, FY 2005 - 2009	47
--	----

FACILITIES INFORMATION

Physical Plant Facilities, Fall 2009	49
Facilities Overview	49
Campus Map	50

INSTITUTIONAL ADVANCEMENT

Foundation Board of Directors, Alumni Board, Directors	51
Total Market Value of Endowment	52
Alumni by County of Residence, 2009	53

FINANCIAL INFORMATION

Tuition and Fees per Academic Year, Fall 2000-2009	55
Financial Aid Awards, AY 2004-2008	56
Revenues and Expenditures, FY 2007-2009	57
Fund Revenues by Source – FY 2009	58
Fund Expenditures by Functions – FY 2009	58

Introduction

President's Message

A Message from Dr. Janelle Ashley, President of Worcester State College



It is my pleasure to note that Worcester State College has a new Strategic Plan for 2010 – 2014. Worcester State College has long demonstrated its commitment to a culture of academic excellence for students of increasingly diverse backgrounds and needs. Our Strategic Plan outlines specific goals and objectives that will enable the College to expand its ability to offer high quality academic programs and to serve the educational needs of Worcester and the central Massachusetts region.

As we faced a significant regional demographic shift and reductions in public financial support, the College recognized that it had to plan thoughtfully for the future. To do this, the importance of this Fact Book became even more crucial. Despite the challenging economic environment, we have achieved significant accomplishments.

As always, at Worcester State College, students remain our first priority. Our graduates are well prepared to enter into fulfilling careers and are ready to become engaged in their communities. Our faculty, staff, alumni and friends continue to work diligently to ensure that we continue to provide our students an excellent education of exceptional value. In recognition of their hard work, for the past six years, The Princeton Review has named Worcester State College a Best Northeastern College.

I do hope this resource will prove valuable to you and I encourage you to contact the Office of Institutional Research with any questions you may have.

Sincerely,
Janelle Ashley
President

Board and Administration

Board of Trustees

George W. Tetler III, *Chair*
John P. Brissette '88, *Vice Chair*
Jean Campaniello '77, *Vice Chair*
George H. Albro '65, M.Ed. '68
Jeffrey L. Busha '90

Lisa M. Giarrusso
Stephen Paige
Elizabeth Rooney
Richard A. Sheppard
Ronald R. Valerio '75

Standing Committees 2009-2010

Academic/Student Development:

Jean Campaniello, *Chair*
Stephen Bostic
Lisa Giarrusso
Elizabeth Rooney

Finance and Facilities:

George Tetler, *Chair*
George Albro
John Brissette
Jeffrey Busha

Human Resources:

Jeffrey Busha, *Chair*
Lisa Giarrusso
Shirley Steele

Planning and Development:

John Brissette, *Chair*
George Albro
Stephen Bostic
Elizabeth Rooney
Dick Sheppard
Ronald Valerio

Note: Chair John Brissette is an ex-officio voting member of each committee.

Campus Administration

Janelle C. Ashley, *President*
 Sibyl M. Brownlee, *VP, Student Affairs*
 Kathleen M. Eichelroth, *VP, Administration and Finance*
 Thomas M. McNamara, *VP, Institutional Advancement*
 Maureen D. Shamgochian, *Interim VP, Academic Affairs*
 Donald W. Vescio, *VP, Information Technology*
 Lori J. Dawson, *Interim Assoc. VP, Academic Affairs*
 Charles J. Oroszko, *Assoc. VP/Student Affairs, Dean of Students*
 Robin J. Quill, *Assoc. VP, Administration and Finance*
 Annmarie D. Samar, *Assoc. VP, Enrollment Management*
 William H. White, *Assoc. VP & Dean, Graduate and Continuing Education*
 Camilla H. Caffrey, *Asst. VP, Institutional Advancement*
 Lea Ann Erickson, *Asst. VP, Public Relations and Marketing*
 Judith A. St. Amand, *Executive Assistant to the President*
 Roberta Kyle, *Associate Dean, Graduate & Continuing Education*
 Nicole M. Brown, *Assistant Dean, Graduate & Continuing Education*
 Julie A. Kazarian, *Assistant Dean, Student Affairs/Director of Residence Life*
 Timothy J. Sullivan, *Assistant Dean, Student Affairs and Director, Student Activities*

Marcella Uribe-Jennings, *Assistant Dean/Director, Office of Multicultural Affairs*
 John Durkin, *Executive Director, Center for Effective Instruction*
 Mary Jo Marion, *Executive Director, Latino Educational Institute*
 Beth Axelson, *Director, Admissions*
 Lynn E. Bromley, *Director, Payroll/Benefits*
 Julie A. Chaffee, *Director, Registrar*
 Susan E. Chapman, *Director, Athletics*
 Steve Chao, *Director, International Programs*
 Brian R. Dinsdale, *Director, Publications & Printing Services*
 Marcia J. Eagleson, *Director, Career Services*
 Donald D. Hochstetler, *Director, Library*
 William Hosmer, *Director, Center for Effective Instruction*
 Vacant, *Director, Center for Business & Industry*
 Michael Sidoti, *Director, Disability Services*
 Jayne A. McGinn, *Director, Financial Aid*
 Raja Mukherjee, *Director, Advancement Services*
 Laura A. Murphy, *Director, Counseling Services*
 Rosemary F. Naughton, *Chief of College Police*
 Sandra K. Olson, *Director, Facilities*
 Susan Seibel, *Director, Intensive English Language Institute*
 Kenneth A. Smith, *Director, Institutional Research*
 Gerald E. Sorge, *Director, Academic Affairs Administrative Support*
 Edna P. Spencer, *Director, Diversity & Affirmative Action*
 Louise Storey, *Director, Procurement/Business Manager*
 Russell E. Vickstrom, *Director, Human Resources*
 Andrea L. Wamboldt, *Director, Academic Success*

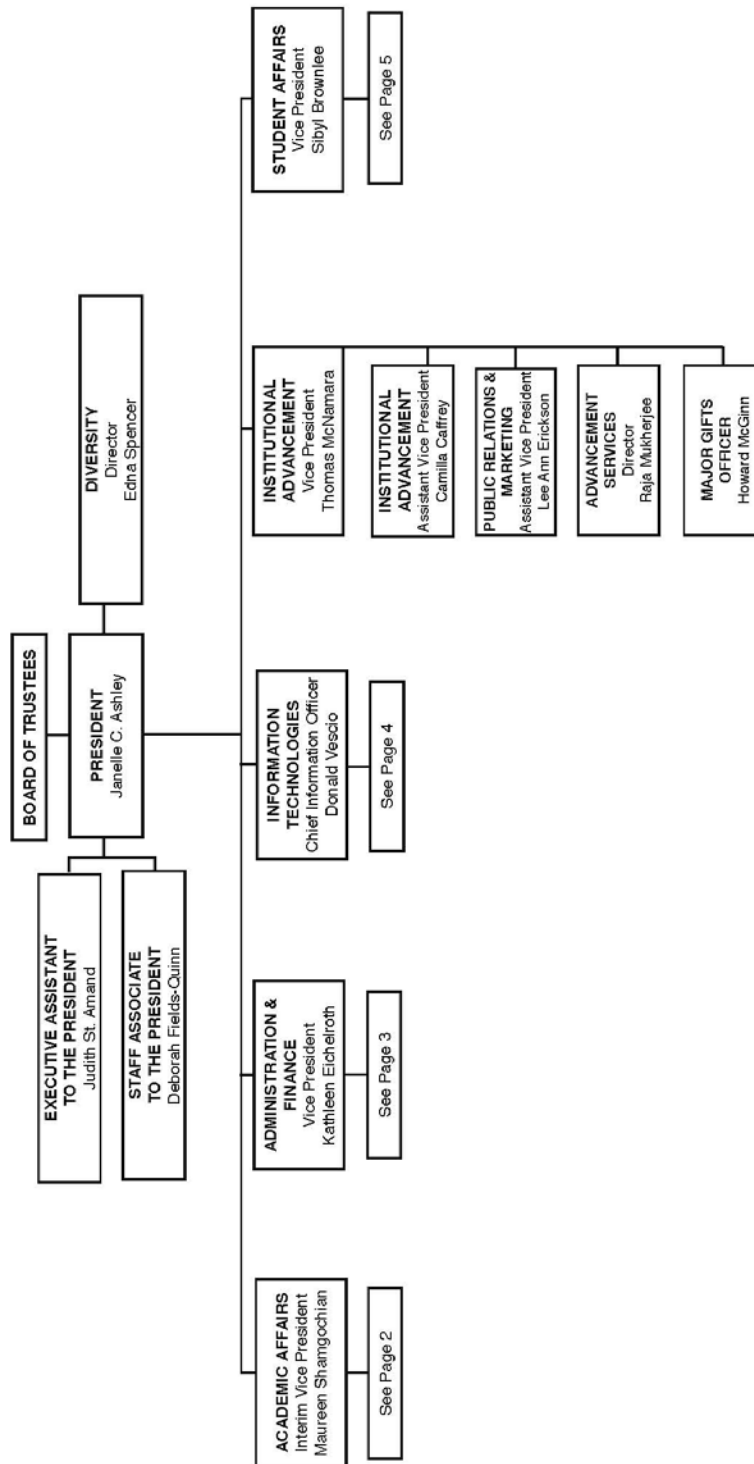
Note: President Ashley is an ex-officio non-voting member of each committee.

Department Chairs, Fall 2009

<i>Name</i>	<i>Department</i>	<i>Title</i>
Ellen Fynan	Biology	Chair
Wei-Pang Lee	Business and Economics	Chair
Alan Cooper	Chemistry	Chair
Linda Larrivee	Communication Sciences & Disorders	Chair
Don Bullens	Communication	Chair
Karl Wurst	Computer Science	Chair
Robert Brooks	Criminal Justice	Chair
Raynold Lewis	Education	Chair
Helena Semerjian	Health Sciences	Chair
Frank Minasian	History and Political Science	Chair
Philip Burns	English	Chair
Richard Bisk	Mathematics	Chair
Andrea Wallen	Nursing	Chair
Joanne Gallagher	Occupational Therapy	Chair
Kristin Waters	Philosophy	Chair
William Hansen	Physical and Earth Science	Interim Chair
Emily Soltano	Psychology	Chair
Matthew Johnsen	Sociology	Chair
Steven Corey	Urban Studies	Chair
Michael Hachey	Visual & Performing Arts	Chair
Patricia Marshall	World Languages	Chair

Organizational Chart

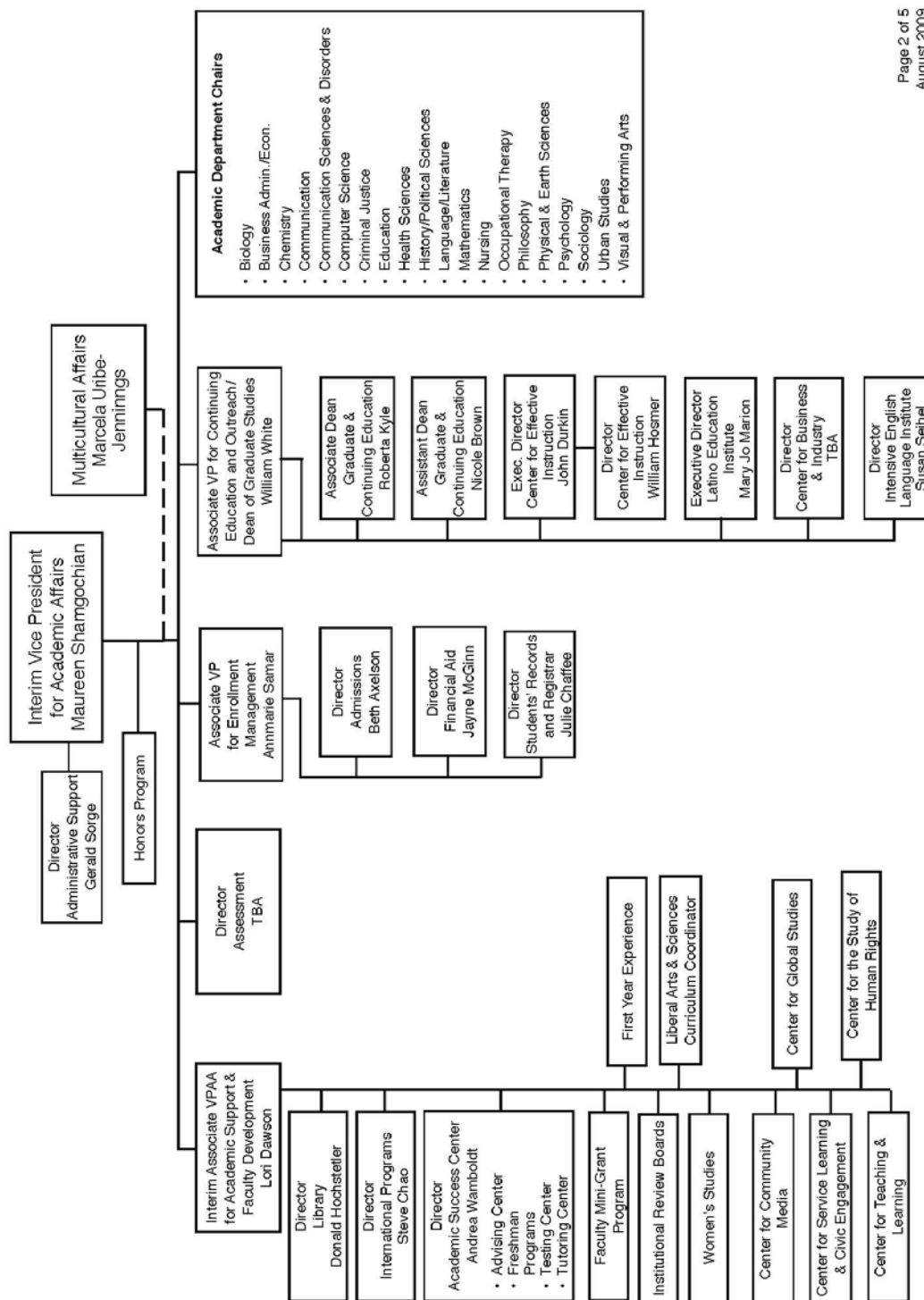
WORCESTER STATE COLLEGE TABLE OF ORGANIZATION



Page 1 of 5
August 2009
(1D)

Source: Printing & Publications

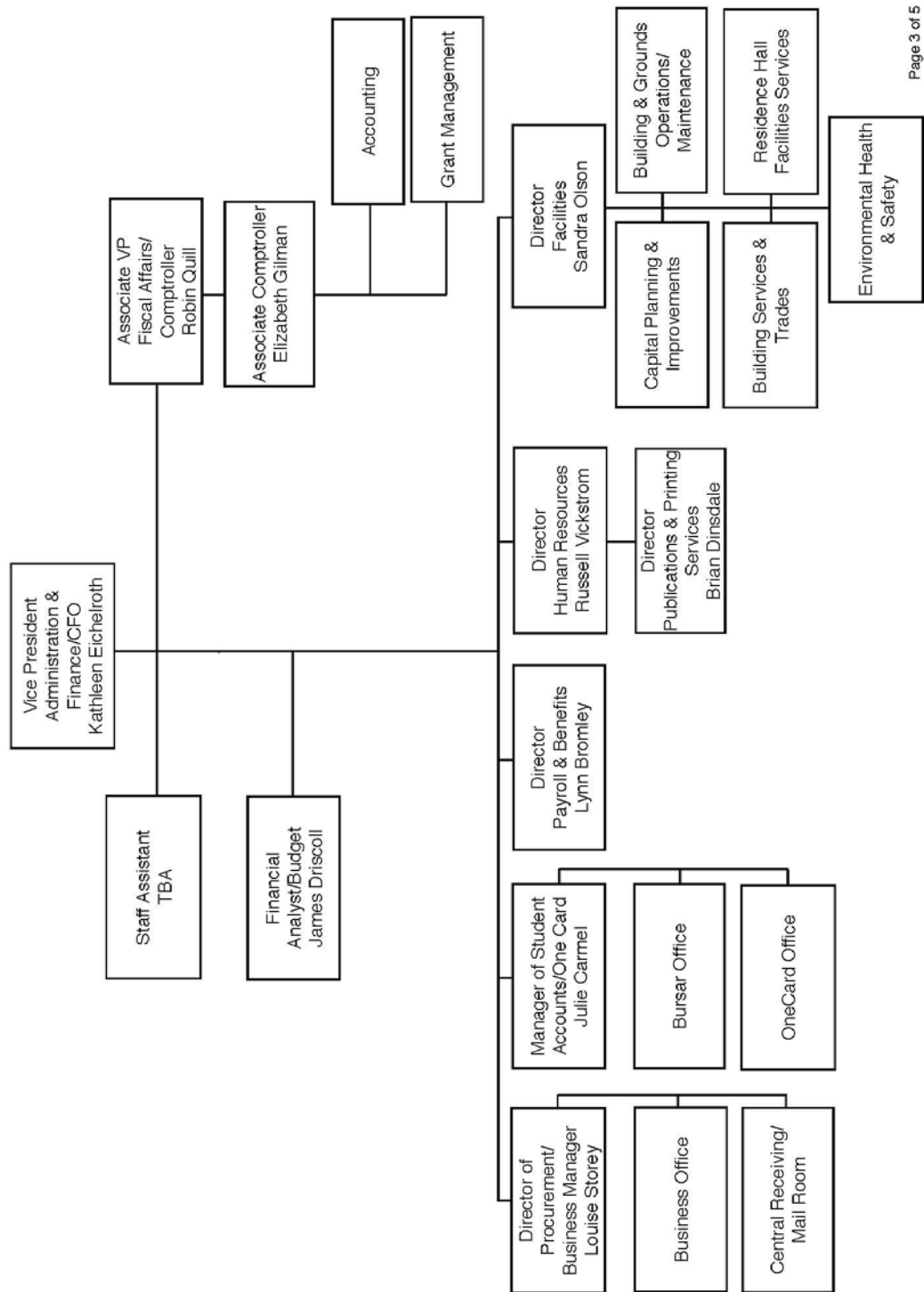
Division of Academic Affairs



Page 2 of 5
August 2009
(10)

Source: Printing & Publications

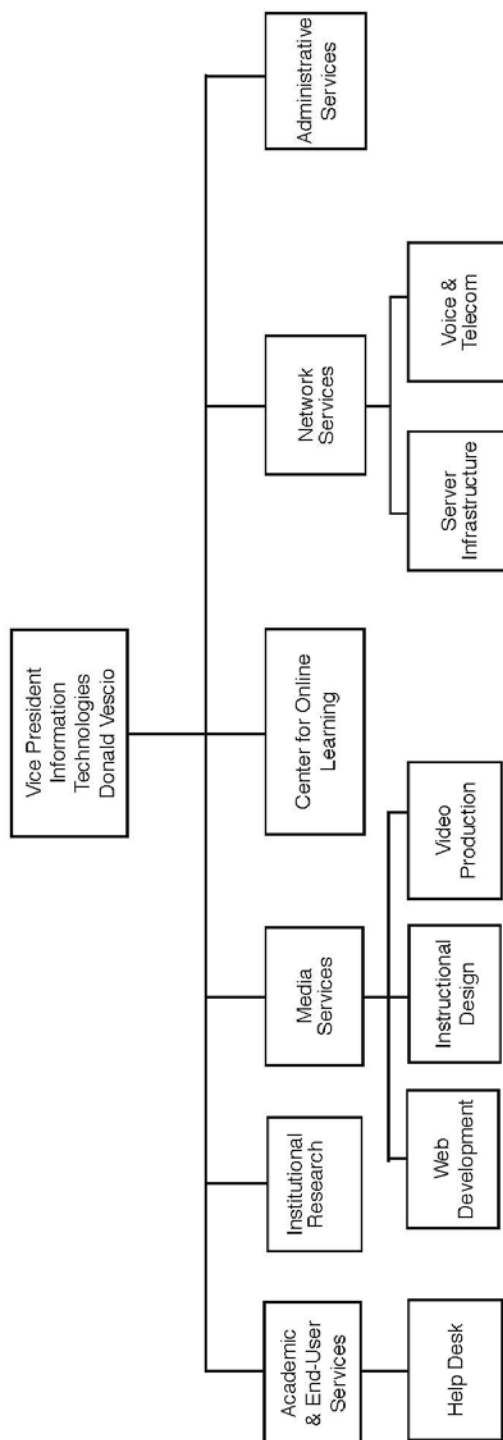
Division of Administration and Finance



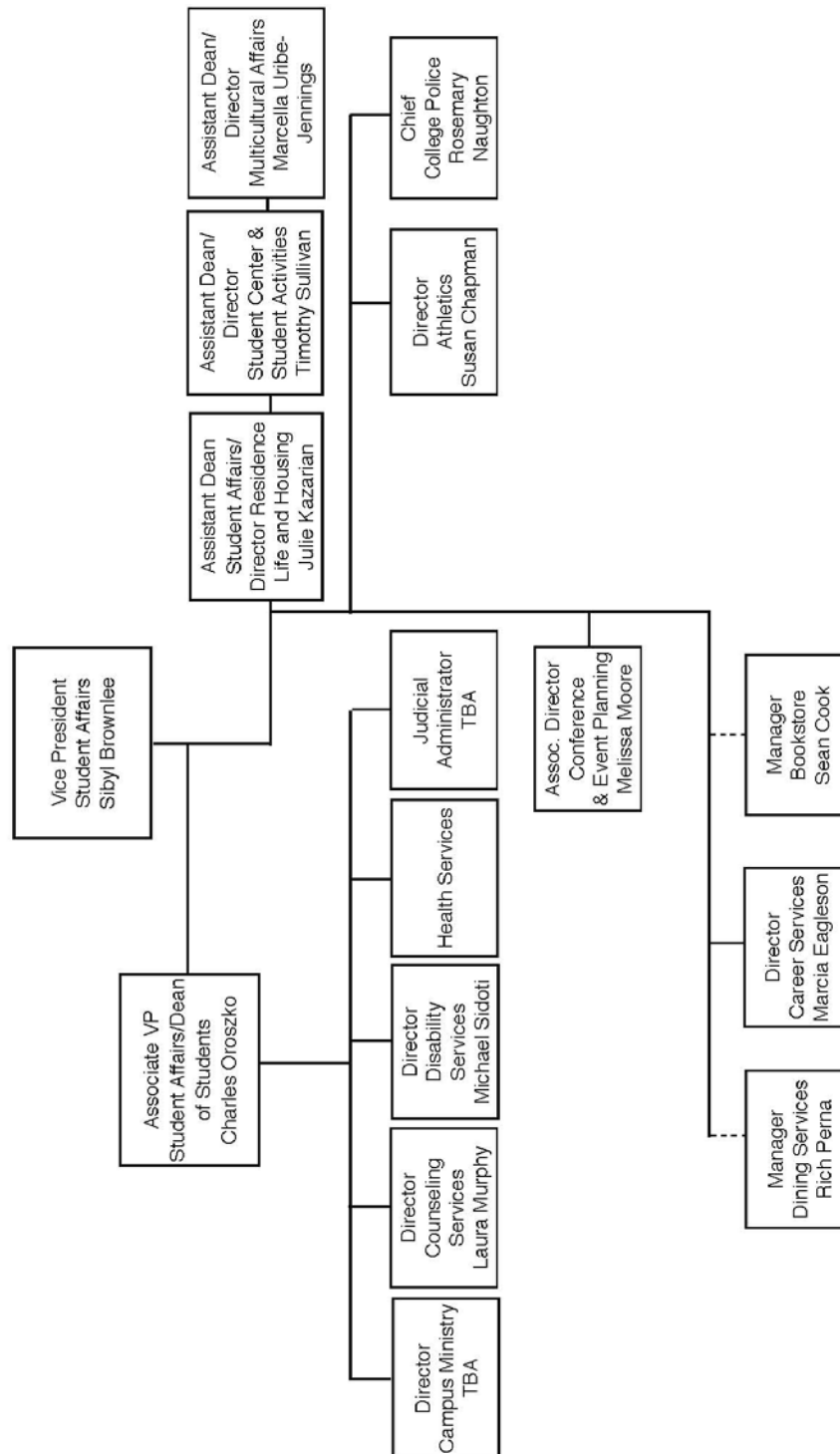
Page 3 of 5
August 2009
(ID)

Source: Printing & Publications

Division of Information Technologies



Division of Student Affairs



Page 5 of 5
August 2009
(10)

Source: Printing & Publications

General Information

Worcester State College *SNAPSHOT*, Fall 2009

STUDENT PROFILE

Fall Enrollment 2009:

Undergraduate Full-Time	3,494
Undergraduate Part-Time	1,209
Graduate Full-Time	149
Graduate Part-Time	621
Total Headcount	5,473

Student Characteristics:

Women (Undergraduate)	60%
Men (Undergraduate)	40%
Out of State	2.8%
International (17 Countries)	1.0%
ALANA ¹ Students	15.6%
Residential Students ²	29%
Average Age (Undergraduate)	23.6
Average HSGPA	3.06
Average SAT Score	1020
Retention (Fall 2008, 1 st year)	77%
Graduation (2002, 6 th year)	48%

First-time Freshmen Admissions:

Applied	3,559
Accepted	2,101
Accepted & Enrolled	695

Transfer Admissions:

Applied	1,034
Accepted	823
Accepted & Enrolled	508

FINANCES

Cost of Attendance:

Undergraduate Tuition	\$970
Undergraduate Fees	\$5,635
Room and Board (Average)	\$9,067

Revenues (2008-2009):

State Appropriation	\$25,909,130
Tuition and Fees-Net	\$25,238,198
Other Sources	\$14,469,888
Total Revenues	\$67,617,166

Student Financial Aid (2008-2009):

Students Receiving FAID	3,036
Average Size of Award	\$8,182
Students on WSC Scholarships	981

Market Value of Funds under Mgmt: \$10,975,754

Endowment: \$ 9,048,488

¹ ALANA (African-American, Latino, Asian, Native-American)

² Based only on Full-time, Degree-Seeking, Undergraduate Students

FACULTY-STAFF PROFILE

Faculty:

Full-Time (includes Librarians)	184
Part-Time Faculty	199
Full-Time Faculty with PhD/T Degree	132
Student to Faculty Ratio ³	17 : 1

Staff: (Full-time)

Association of Professional Adm.	104
AFSCME	154
Non Unit Professionals	31

ACADEMICS

Academic Programs:

Undergraduate Majors	25
Undergraduate Minors	29
Graduate Programs	21
Study Abroad Programs	67

Largest Major (1st Major only):

Business Administration	788
Psychology	429
Criminal Justice	337
Nursing	280
Biology	267

Average Undergraduate Class Size

19

Degrees Conferred (2008-2009):

Baccalaureate's	810
Post Bachelor's Certificates	186
Master's	184
Certificate of Advanced Graduate Study	3
Total Degrees Conferred	1,183

STUDENT LIFE

Student Organizations and Clubs	44
Honor Societies	15

Intercollegiate Sports:

Men	10
Women	10

ALUMNI⁴

Total Alumni	32,487
Alumni Living in MA	21,557
Alumni in Worcester County	16,917

³ FTE Students Taught/FTE Faculty

⁴ Includes both Undergraduate and Graduate Degree Recipients

Brief History of WSC

1874	The State Normal School in Worcester was founded on September 11.
1921	The Normal School introduced a four-year Bachelor of Science in Education.
1932	The Normal School became Worcester State Teachers College (WSTC).
1941	WSTC became the first Massachusetts teachers college to earn professional accreditation from the American Association of Teachers Colleges.
1952	The College introduced a Master of Science in Education.
1963	The Board of Education renamed the school Worcester State College to reflect the expansion of Liberal Arts and Science disciplines.
1974	The College introduced a Bachelor of Science in Business Administration and established the Graduate School. 1974 also saw the establishment of the Nursing Program, the first Bachelor of Science program for registered nurses in New England, and the first to be accredited by the National League of Nursing.
1980	The area's first Master of Science in Speech-Language Pathology was offered, and the area's first college-operated Speech, Language, and Hearing Clinic was established.
1984	The first baccalaureate-level Occupational Therapy program in the Massachusetts State College system was established. These offerings expanded to include a Master of Occupational Therapy in 1998.
2000	The College established a Master of Science in Health Care Administration, built a state-of-the-art athletic field, established a campus-wide area network and website, and opened the Kalyan K. Ghosh Center for Science and Technology.
2002	The Board of Trustees appointed Janelle C. Ashley as WSC's 10 th president.
2003	The Development and Alumni Relations Office generated a record amount of funding from private sources and increased the number of donors to the highest level in the College's history.
2004	The new six-story Wasylean Hall opened to 348 students, bringing the resident student population to nearly 1,000. The office of Institutional Advancement raised over \$2.2 million from over 3,500 donors, a record-breaking milestone at the College.
2005	The Eugene A. Sullivan Academic Center opened as a fully refurbished building equipped for full wireless technology and multi-media capability in every classroom.
2007	The first parking garage in the state college system was opened at the College.
2008	Worcester State College was one of only 200 colleges nationwide to be named to the President's Higher Education Community Service Honor Roll for exemplary service efforts and service to disadvantaged youth.
2009	The College introduced a new major in Interdisciplinary Visual & Performing Arts, and formed an alliance with the Worcester Center for Crafts to enhance studio space for students. The newly renovated Administration Building also opened, with a first-floor student mall to streamline services for students.

Core Values

Worcester State College values inclusiveness and diversity, recognizes higher education's responsibility to society, and embraces the belief that widespread access to excellent educational opportunities is the cornerstone of a democratic society.

Vision

Worcester State College is dedicated to offering high quality, affordable undergraduate and graduate academic programs and to promoting the lifelong intellectual growth, global awareness, and career opportunities of its students.

Mission

Worcester State College, a public metropolitan institution of higher learning located in a culturally vibrant region of the Commonwealth, affirms the principles of liberal learning as the foundation for all traditional liberal arts and sciences disciplines, while maintaining its historical focus on teacher education. It has expanded its offerings with professional degree programs in biomedical sciences, business, and the health professions. Through its curricula, the college addresses the intellectual and career needs of the increasingly diverse citizenry of central Massachusetts.

Worcester State College is dedicated to offering high quality, affordable undergraduate and graduate academic programs and to promoting global awareness, lifelong intellectual growth, and career opportunities of its students. To this end, the college values teaching excellence rooted in scholarship and community service; cooperates with the business, social and cultural resources of Worcester County; collaborates with other institutions of higher learning in the region, and develops new programs responsive to emerging community needs.



Strategic Priorities FY 2004 – FY 2009

Academic and Student Affairs

A. Develop a more integrated and interdisciplinary curriculum that includes a global perspective while strengthening and emphasizing the traditional focus on literacy and liberal learning

Strategic Goals:

1. Include an increased focus on global issues and the global community as curriculum options for students within traditional undergraduate majors
2. Revise general education to provide more connections among disciplines and develop students' awareness of global issues while strengthening the traditional focus on literacy and liberal learning
3. Enhance connections to the diverse community of central Massachusetts through increased opportunities for community service and service learning

Rationale: It is increasingly apparent that the world has been transitioning to a new and more significant level of social, political, economic, and environmental integration. This priority focuses on educating students to function responsibly, effectively, and competitively in this new global environment.

B. Increase the effectiveness of the academic support provided by the library and academic advising

Strategic Goals:

1. Update and enhance library collections to support the curriculum, and provide adequate library staffing
2. Develop a state-of-the-art system of academic advising and tutoring available to all students
3. Develop effective linkages between Academic Affairs and Student Affairs to support students academic success

Rationale: Academic support and advising services must provide diverse students with the state- of- the- art tools and assistance they need to succeed in college and in their professional lives after graduation. Vital academic supports and services include thorough and well-informed academic advising, a library collection and staffing that adequately support the curriculum, and targeted tutoring services at both the departmental and college-wide levels.

C. Enhance the quality and recognition of the graduate school

Strategic Goals:

1. Identify and/or hire additional graduate faculty
2. Provide additional support for graduate student research and scholarship
3. Develop mission for graduate education that clarifies how it is intellectually distinct from undergraduate studies and its role within the College

Rationale: This priority stresses the development of a specific identity and mission for the graduate school that will assure the quality of graduate teaching, promote high academic standards for admission and graduation, and support graduate student performance, particularly in research and scholarship.

D. Increase the quantity and quality of co-curricular and student activities outside the classroom to engage commuter and residential students in campus life

Strategic Goals:

1. Develop programs and activities that focus on cultural and global awareness to complement the curricular focus on a global perspective
2. Develop services and activities for an increased residential population and that also engage commuter students in campus life
3. Develop effective linkages between student affairs and academic affairs

Rationale: The experiences available to students outside of the formal curriculum play a critical part in the overall learning environment of the College. This priority focuses on providing a seamless learning environment that enhances and complements the classroom experience.

Assessment, Campus Diversity, and Decision Making

E. Increase our capacity to effectively assess student learning, academic supports, student affairs, and other key outcomes

Strategic Goals:

1. Ensure that quality data is widely available for decision making
2. Develop and implement a departmentally based, faculty driven student learning outcome assessment process for each academic major
3. Develop and implement assessment strategies for academic supports, student affairs, and other key outcomes

Rationale: The College's ability to assess its effectiveness in a variety of areas and to use the information obtained to make improvements are critical to inform its planning, decision-making, and resource allocation. The important area of assessment of student learning outcomes must be faculty driven and departmentally based and supported by the availability of quality data systems.

F. Achieve a significant increase in diversity among our students, faculty, and administration

Strategic Goals:

1. Implement specific strategies to develop a campus culture that is welcoming to a range of diverse students and employees
2. Utilize new approaches for recruitment and retention of a range of diverse faculty and administrators
3. Establish a target of 20% of new faculty hires from under-represented groups each year over the next 5 years
4. Implement methods designed to recruit and retain an increasingly diverse student body

Rationale: The importance of increasing the diversity of the campus community is supported by the fact that the citizenry of the Commonwealth, which we serve, is becoming increasingly diverse. A more diverse campus community will support the goals related to developing a global perspective established in other priorities. To successfully recruit and retain diverse faculty and students, it is essential to create a campus culture that is welcoming to people of color.

G. Engage faculty, students, and staff effectively in institutional decision making

Strategic Goals:

1. Promote, nurture and sustain a sense of academic community among the faculty, students, and administration
2. Support and encourage faculty, students and staff to contribute appropriately to institutional decision making

Rationale: The central work of the College is accomplished in the interaction between faculty and students both within and outside the classroom. In all aspects of campus life, the best decisions will be made by incorporating the experience and expectations of faculty, students, and staff. The formal governance procedures specify important ways in which this priority can be met. The College should follow the contractual procedures in ways that ensure the broadest and fullest participation of faculty, students and staff in the decision making process.

Facilities and Grounds

H. Engage the campus community in a facility master planning process

Strategic Goals:

1. Create physical facilities and a natural setting that reflect and support the mission, values and vision of the College
2. Develop a facilities master plan that reflects the needs of commuting students and the increased residential population
3. Design and support a sustainable information technology infrastructure

Rationale: In order to thrive in the future the College needs to maintain a high quality physical plant and natural environment that reflect and support its mission. A facility master plan is needed to guide the next phase of this ongoing process. The physical and natural spaces at the College should support and encourage the learning process envisioned in the College's strategic priorities, a vibrant social life, and exciting co-curricular events and student activities.

Fiscal Resources and Public Relations

I. Strengthen the link of fund raising strategies and stewardship of fiscal resources to the College's mission and strategic priorities

Strategic Goals:

1. Support research and scholarship that connect the College with local and global communities
2. Initiate a capital campaign that supports the College's strategic priorities

Rationale: The enhancement of revenue through fundraising and the careful stewardship of financial resources will be essential for the College to maintain and enhance its ability to fulfill its mission. The ongoing development of mutually advantageous community engagement should provide the foundation for a new capital campaign that will increase the endowment in a manner that targets key mission priorities.

J. Foster and communicate the sense of pride we have about the College

Strategic Goals:

1. Focus on internal and external communities, state policy makers, and potential funders
2. Develop and implement communications strategies focused on key messages that capture the unique characteristics of the College and its strategic priorities

Rationale: *The College has much to be proud of and it is critical that this sense of accomplishment and pride be communicated effectively to prospective students and their families, state policy makers, potential funders, and regional and national academic constituencies.*

Accreditation

Worcester State College is accredited by the New England Association of Schools and Colleges, Inc., a non-governmental, nationally recognized organization whose affiliated institutions include elementary schools through collegiate institutions offering postgraduate instruction.

Accreditation of an institution by the New England Association indicates that it meets or exceeds criteria for the assessment of institutional quality periodically applied through a peer group review process. An accredited school or college is one which has available the necessary resources to achieve its stated purposes through appropriate educational programs, is substantially doing so, and gives reasonable evidence that it will continue to do so in the foreseeable future. Institutional integrity is also addressed through accreditation.

The following programs are also accredited by their respective professional organizations:

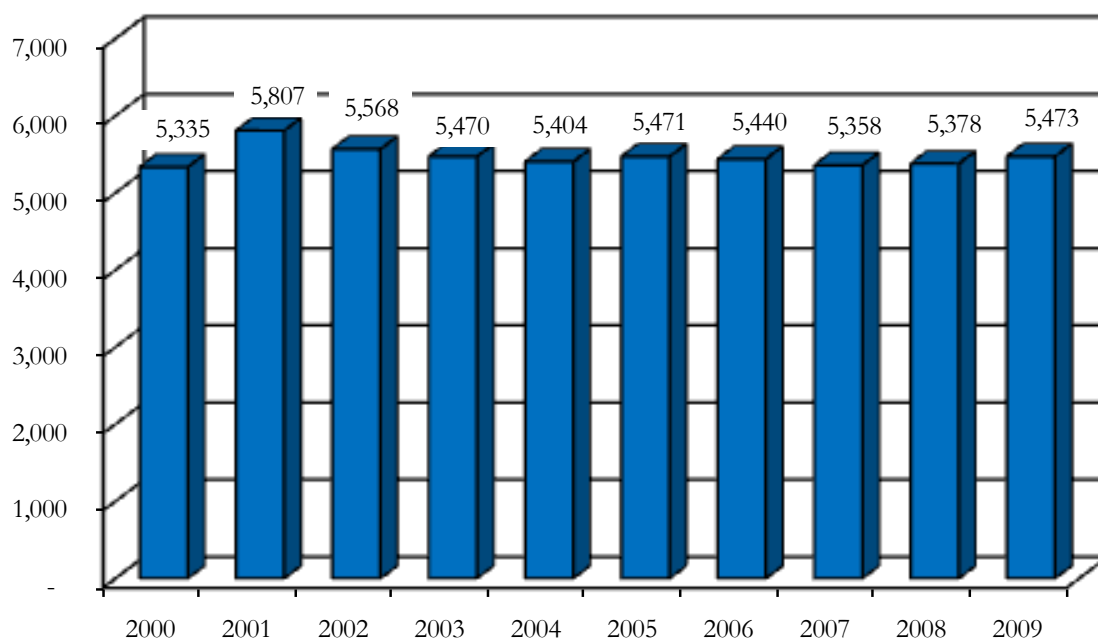
- Nursing: The National League for Nursing
- Speech-Language Pathology: The American Speech-Language-Hearing Association
- Occupational Therapy: Accreditation Council for Occupational Therapy Education
- Nuclear Medicine Technology: The Joint Review Committee on Educational Programs in Nuclear Medicine Technology.

Worcester State College was named the “Best College in Worcester County” in Worcester Magazine’s Readers Poll three out of the past five years. The Princeton Review also designated the College a 2007 “America’s Best Value College” and a “Best Northeastern College” in 2004, 2005, 2006, 2007, 2008, and 2009. Worcester State is the only Massachusetts State College named a Best Northeastern College by the Princeton Review for 6 years.



Student Profile

Longitudinal Enrollment, Fall 2000 – Fall 2009



Source: IR Official DHE Fall Files

Students by Country of Residence, Fall 2009

<i>Country</i>	<i>Undergraduate</i>	<i>Graduate</i>	<i>Total</i>
Albania	7	0	7
Brazil	1	1	2
Canada	1	0	1
Cameroon	1	0	1
China	19	0	19
Cuba	0	1	1
Ghana	1	2	3
India	1	0	1
Ireland	0	1	1
Ivory Coast	1	1	2
Kenya	5	3	8
Liberia	2	0	2
Moldova, Republic of	1	0	1
Nigeria	1	0	1
Romania	1	0	1
Sweden	0	1	1
Uganda	1	0	1
United Kingdom	2	0	2
United States	4,656	760	5,416
Vietnam	1	0	1
Zambia	1	0	1
Total	4,703	770	5,473

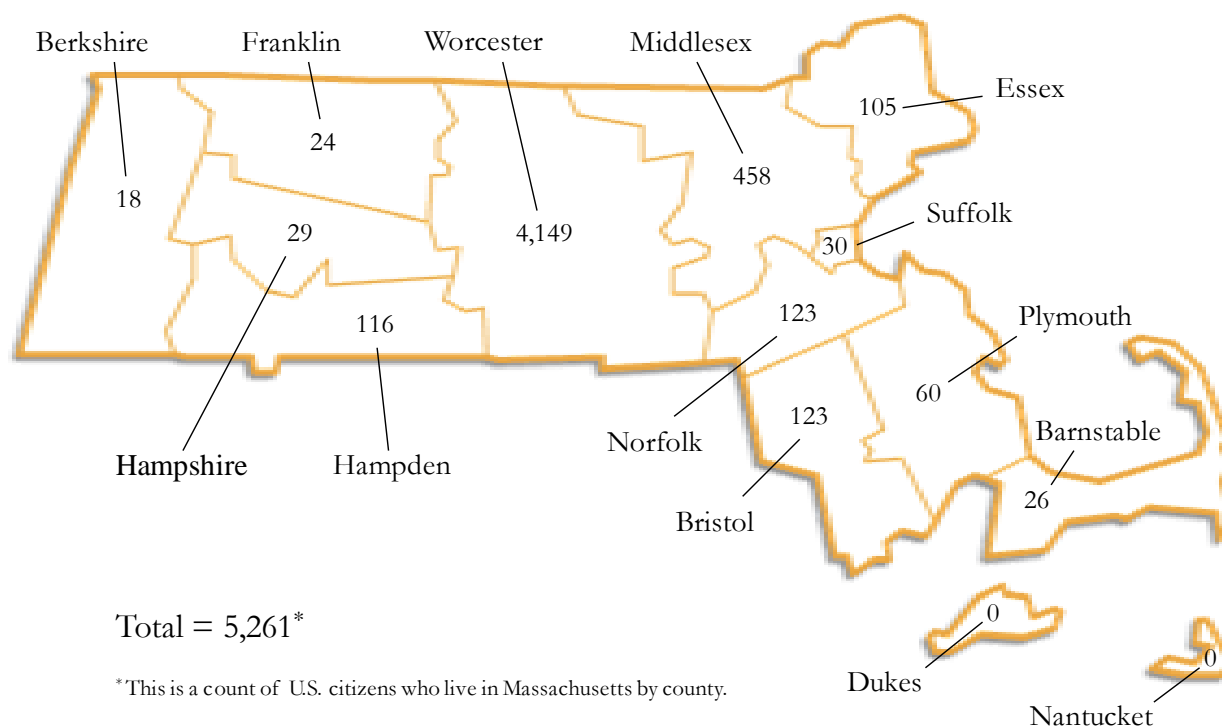
Source: IR Official DHE Fall Files

Students by State of Residence, Fall 2009

<i>State</i>	<i>Undergraduate</i>			<i>Graduate</i>			<i>Total</i>
	<i>Male</i>	<i>Female</i>	<i>Total</i>	<i>Male</i>	<i>Female</i>	<i>Total</i>	
California	3	1	4	0	0	0	4
Connecticut	15	34	49	2	4	6	55
Florida	0	1	1	0	0	0	1
Indiana	1	0	1	0	1	1	2
Kansas	1	0	1	0	0	0	1
Maine	0	2	2	0	0	0	2
Massachusetts	1,804	2,721	4525	194	542	736	5,261
Michigan	1	0	1	0	0	0	1
New Hampshire	10	16	26	1	3	4	30
New Jersey	4	0	4	0	0	0	4
New York	9	3	12	0	0	0	12
North Carolina	0	0	0	0	1	1	1
Pennsylvania	6	0	6	0	0	0	6
Rhode Island	5	11	16	0	12	12	28
Tennessee	1	1	2	0	0	0	2
Texas	1	0	1	0	0	0	1
Vermont	3	1	4	0	0	0	4
Virginia	1	0	1	0	0	0	1
Non-US Citizen	29	18	47	6	4	10	57
Total	1,894	2,809	4703	203	567	770	5,473

Source: IR Official DHE Fall Files

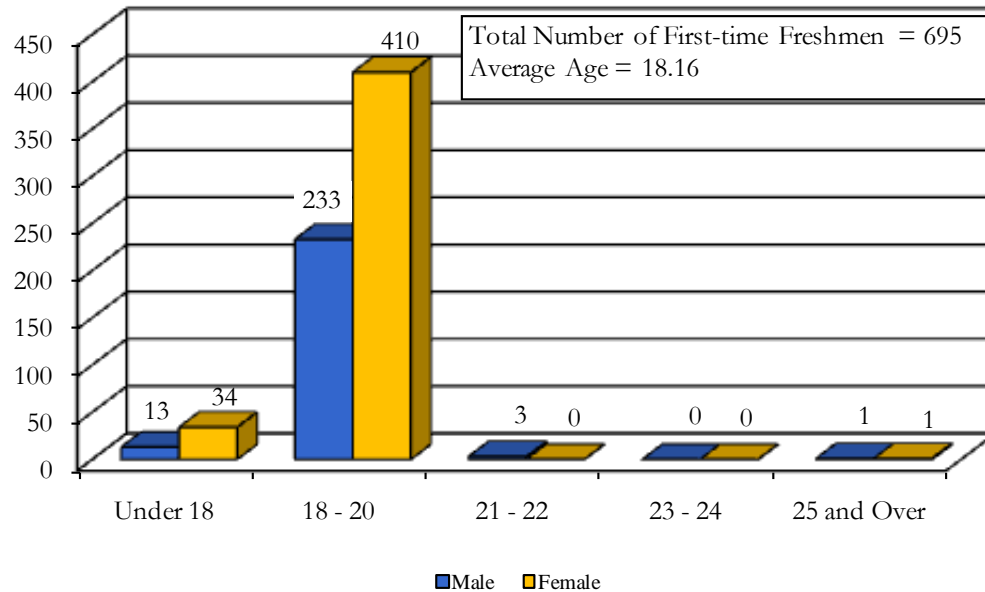
Students by Massachusetts County of Residence, Fall 2009



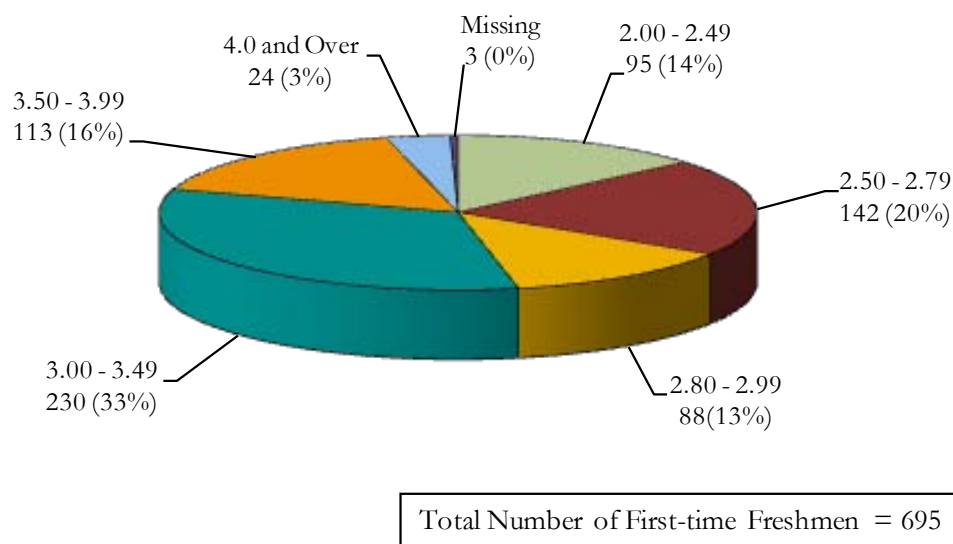
<i>County</i>	<i>Undergraduate</i>	<i>Graduate</i>	<i>Total</i>
Barnstable	21	5	26
Berkshire	17	1	18
Bristol	111	12	123
Essex	96	9	105
Franklin	21	3	24
Hampden	99	17	116
Hampshire	23	6	29
Middlesex	411	47	458
Norfolk	111	12	123
Plymouth	56	4	60
Suffolk	26	4	30
Worcester	3,533	616	4,149
Total	4,525	736	5,261

Source: IR Official DHE Fall Files

Age of Degree-seeking, First-time Freshmen, Fall 2009



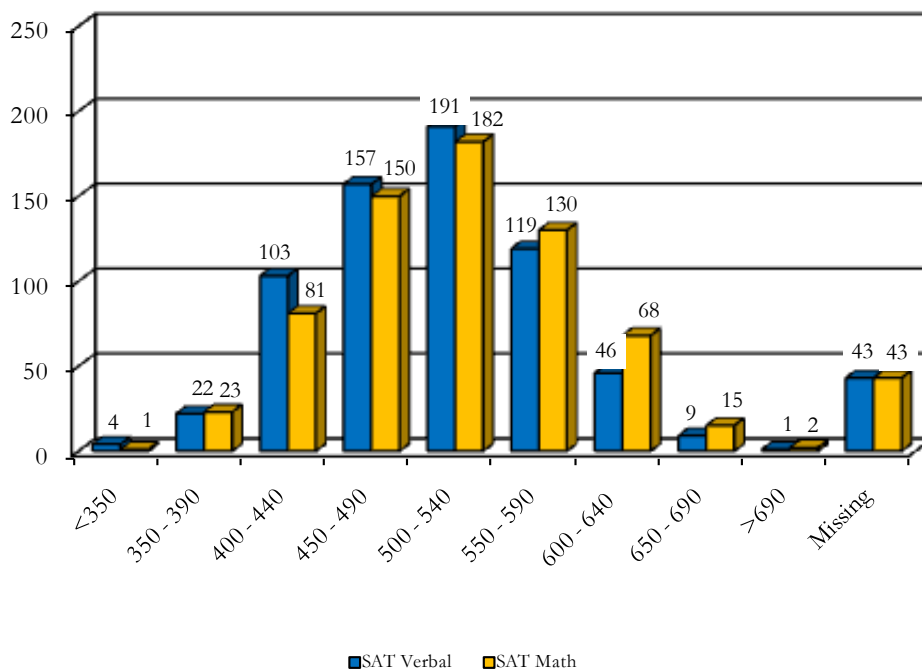
High School GPA of Degree-seeking, First-time Freshmen, Fall 2009



Source: IR Official DHE Fall Files

SAT Scores of Degree-seeking, First-time Freshmen, Fall 2009

Score Range	SAT Verbal			SAT Math		
	Male	Female	Total	Male	Female	Total
<350	3	1	4	0	1	1
350 - 390	10	12	22	7	16	23
400 - 440	40	63	103	20	61	81
450 - 490	48	109	157	50	100	150
500 - 540	66	125	191	71	111	182
550 - 590	49	70	119	54	76	130
600 - 640	19	27	46	30	38	68
650 - 690	4	5	9	6	9	15
>690	0	1	1	1	1	2
Missing	11	32	43	11	32	43
Total	250	445	695	250	445	695

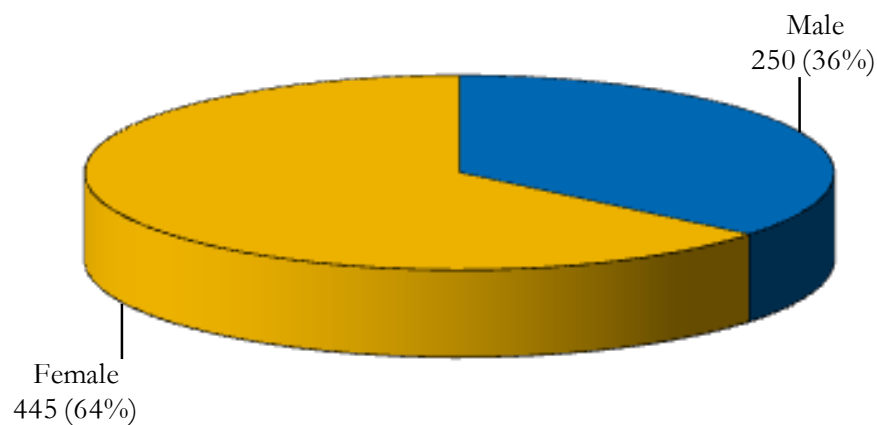


Average Combined SAT Score, Fall 2009

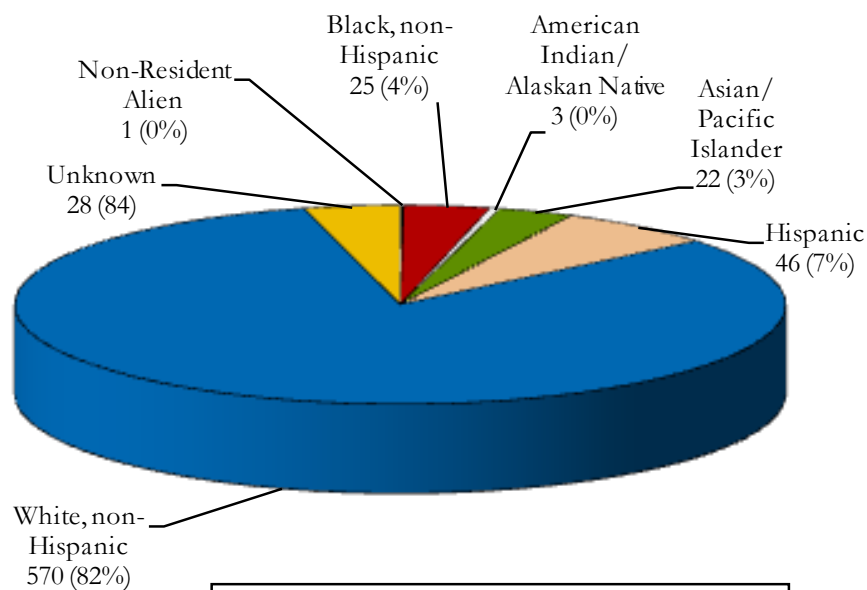
Male 1031.6 Female 1013.1 Total 1019.9

Source: IR Official DHE Fall Files

Gender and Ethnicity of Degree-seeking, First-time Freshmen, Fall 2009



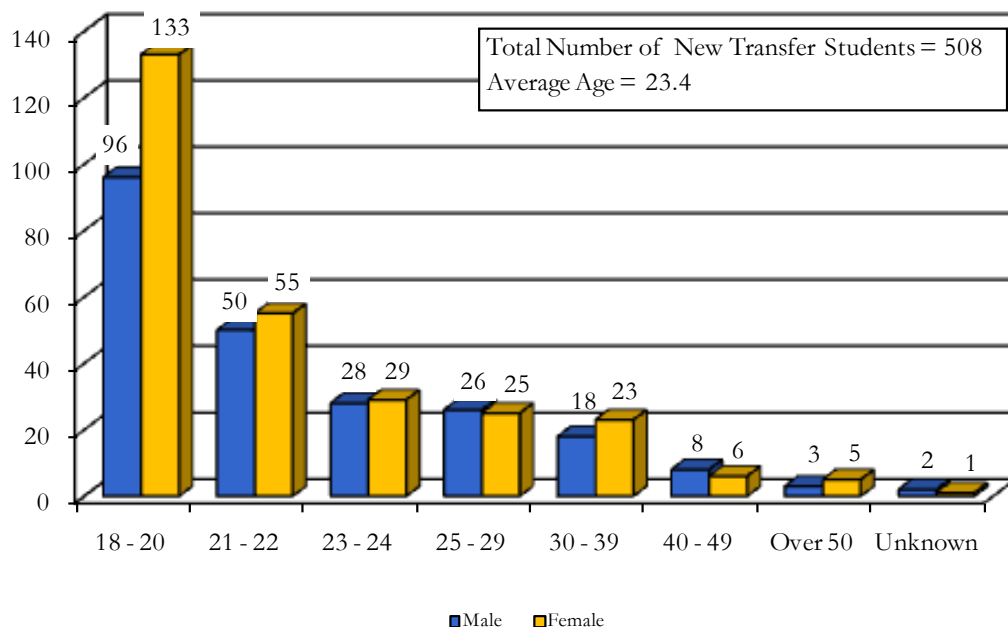
Total Number of First-time Freshmen = 695



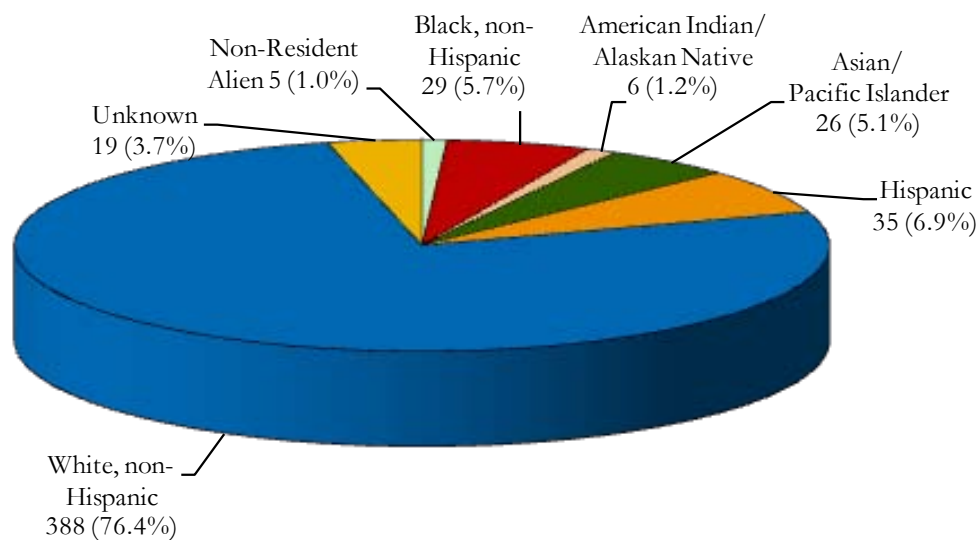
Total Number of First-time Freshmen = 695

Source: IR Official DHE Fall Files

Age of New Degree-seeking Transfer Students, Fall 2009



Ethnicity of New Degree-seeking Transfer Students, Fall 2009



Source: IR Official DHE Fall Files

Transfer Institutions, Fall 2009

<i>Institution</i> *	<i># of Students</i>
Quinsigamond Community College	130
Mount Wachusett Community College	23
Becker College	11
Framingham State College	11
Westfield State College	11
Middlesex Community College	11
Dean College	10
Keene State College	10
University of Massachusetts at Amherst	10
Massachusetts Bay Community College	9
Suffolk University	9
Total	245

* Institutions contributing approximately 1/2 the transfer students

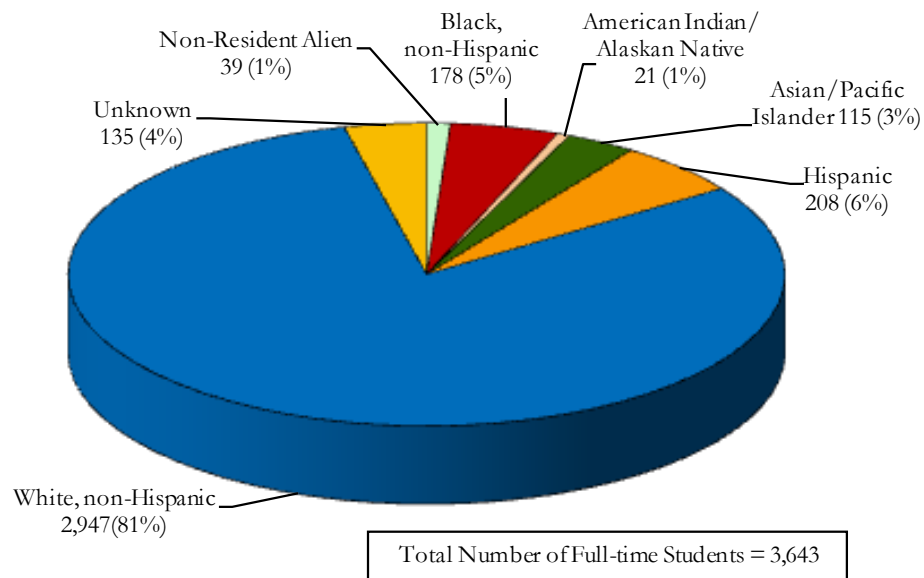
Source: IR Official DHE Fall Files

Majors of New Degree-seeking Transfer Students, Fall 2009

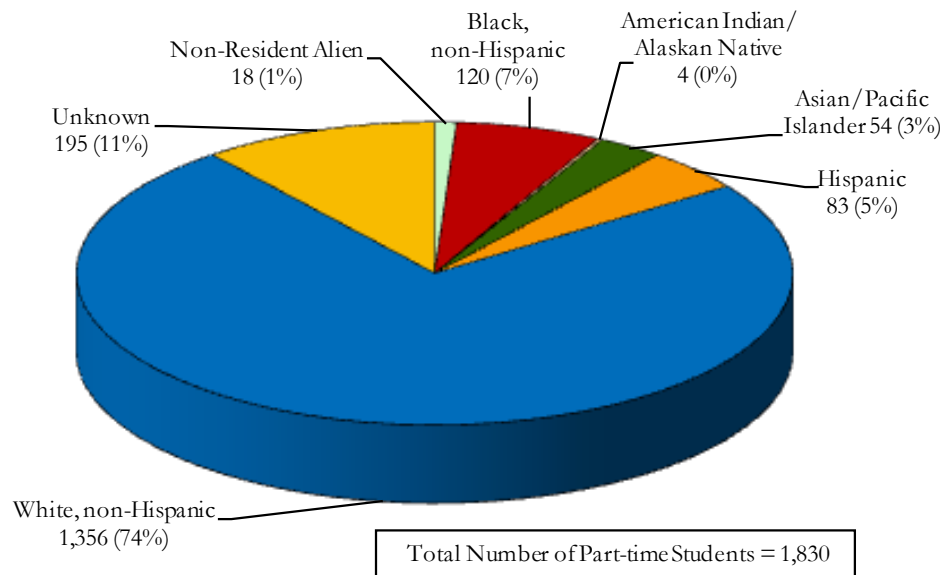
<i>Major</i>	<i>Male</i>	<i>Female</i>	<i>Total</i>
Biology	10	35	45
Biotechnology	5	2	7
Business Administration	67	32	99
Chemistry	7	6	13
Communication	6	12	18
Communication Science & Disorders	0	15	15
Community Health	3	9	12
Computer Science	17	2	19
Criminal Justice	36	21	57
Early Childhood Education	0	13	13
Economics	1	1	2
Elementary Education	3	16	19
English	7	15	22
Geography	2	2	4
Health Education	6	6	12
History	13	7	20
Mathematics	5	3	8
Natural Science	5	2	7
Nursing (Track 1)	1	2	3
Nursing (Track 2)	1	2	3
Occupational Studies	0	1	1
Psychology	11	41	52
Sociology	6	6	12
Spanish	2	5	7
Urban Studies	0	2	2
Undeclared	17	19	36
Total	231	277	508

Source: IR Official DHE Fall Files

Ethnicity of Full-time Students, Fall 2009

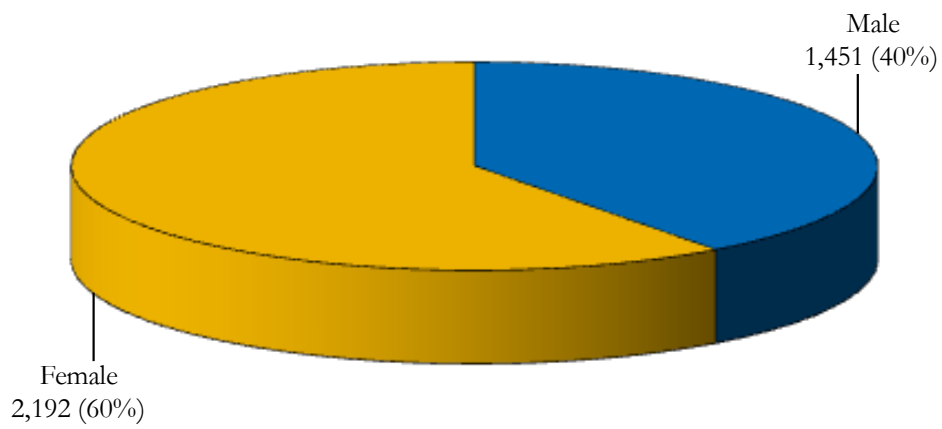


Ethnicity of Part-time Students, Fall 2009



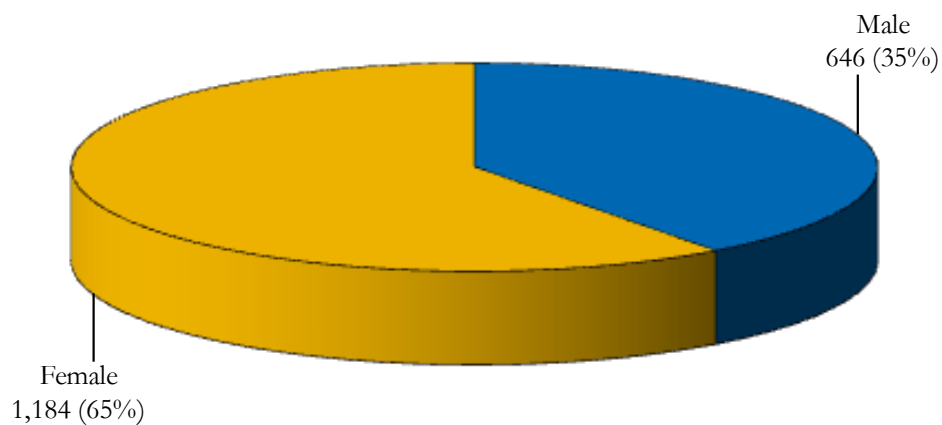
Source: IR Official DHE Fall Files

Gender of Full-time Students, Fall 2009



Total Number of Full-time Students = 3,643

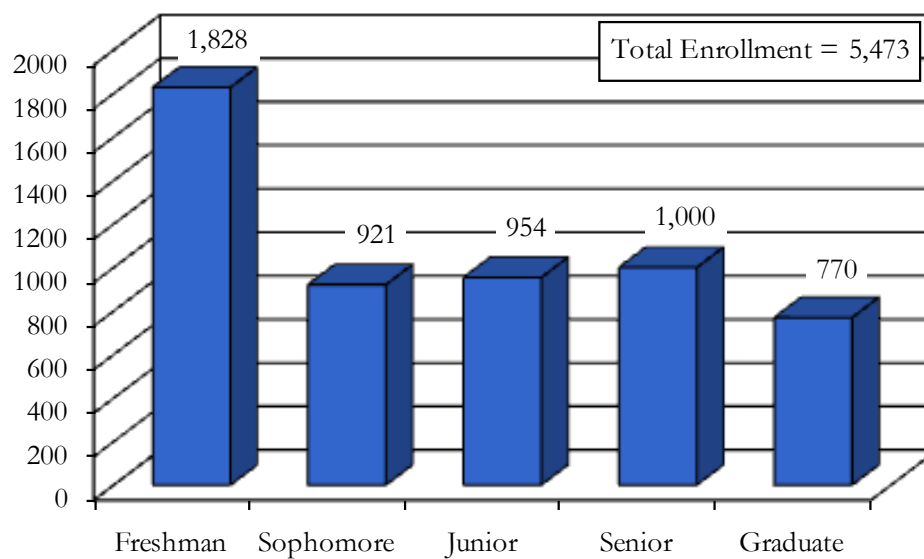
Gender of Part-time Students, Fall 2009



Total Number of Part-time Students = 1,830

Source: IR Official DHE Fall Files

Total Enrollment by Student Classification, Fall 2009



Source: IR Official DHE Fall Files

On-Campus Housing by State of Residence and Class, Fall 2009

<i>Class</i>	<i>Residence</i>	<i>Total</i>
Freshman	Non-resident Alien	3
	California	2
	Connecticut	12
	Kansas	1
	Massachusetts	511
	New Hampshire	4
	New Jersey	1
	New York	3
	Pennsylvania	1
	Tennessee	2
	Vermont	1
Total		541
Sophomore	Connecticut	5
	Massachusetts	221
	New Hampshire	3
	New York	2
	Pennsylvania	2
	Rhode Island	1
	Vermont	2
Total		236
Junior	Connecticut	2
	Massachusetts	149
	New Hampshire	3
	New Jersey	1
	New York	1
	Pennsylvania	1
	Rhode Island	2
Total		159
Senior	Connecticut	2
	Massachusetts	85
	Maine	1
	New York	1
	Pennsylvania	2
Total		91
Grand Total		1,027

Source: IR Official DHE Fall Files

Instructional Programs

Student Enrollment by Major and Student Classification, Fall 2009

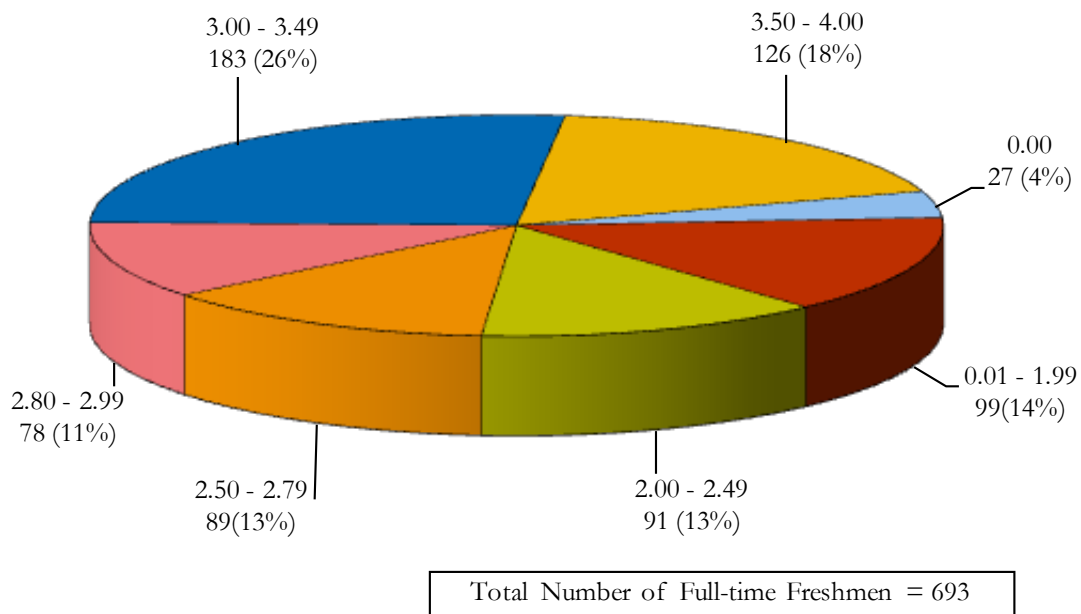
<i>Major*</i>	<i>Student Classification</i>		<i>Total</i>
	<i>Undergraduate</i>	<i>Graduate</i>	
Biology	267	N/A	267
Biotechnology	60	26	86
Business Administration	788	N/A	788
Chemistry	122	N/A	122
Communication	223	N/A	223
Communication Sciences & Disorders	139	N/A	139
Community Health	59	N/A	59
Community Health Nursing	N/A	9	9
Computer Science	102	N/A	102
Criminal Justice	337	N/A	337
Early Childhood Education	89	12	101
Early Childhood Ed (Non-Licensure)	14	N/A	14
Economics	32	N/A	32
Education	N/A	45	45
<i>(Concentration)</i>			
Education	N/A	1	1
English	N/A	3	3
Health Education	N/A	14	14
History	N/A	16	16
Spanish	N/A	11	11
Elementary Education	131	29	160
English	137	N/A	137
Geography	39	N/A	38
Health Care Administration	N/A	12	12
Health Education	86	N/A	86
Health Studies	4	N/A	4
History	174	N/A	174
Management	N/A	14	14
Mathematics	56	N/A	56
Middle School Education	N/A	21	21
Middle/Secondary Education	N/A	3	3
Moderate Special Needs	N/A	23	23
Natural Science	51	N/A	51
Non-Profit Management	N/A	22	22
Nursing (Track 1)	252	N/A	252
Nursing (Track 2)	28	N/A	28
Occupational Studies	89	N/A	89
Occupational Therapy	N/A	47	47
Psychology	429	N/A	429
Reading	N/A	14	14
School Leadership & Administration	N/A	21	21
School Psychology	N/A	25	25
Secondary Education	N/A	74	74
Sociology	65	N/A	65
Spanish	28	N/A	28
Speech-Language Pathology	N/A	88	88
Urban Studies	60	N/A	61
Visual & Performing Arts	4	N/A	4
Undeclared	346	2	348
Non-Degree	492	283	775
Total	4,703	770	5,473

* Includes 1st Major only

Source: IR Official DHE Fall Files

Academic Achievement/Learning Outcomes

Grade Distribution of First-time Freshmen, Fall 2009



Source: IR Official DHE Fall Files

Retention and Graduation Rates

Entering Class	Initial Cohort	After 1st Year		After 2nd Year		After 3rd Year		After 4th Year		After 5th Year		After 6th Year		After 7th Year	
		N	%	N	%	N	%	N	%	N	%	N	%	N	%
2002 ¹	508														
Continued		370	72.8	300	59.1	272	53.5	131	25.8	39	7.7	19	3.7 ²	8	1.6
Dropout (cumulative)			27.2		40.9		45.5		49.4		50.0		48.5		49.3
Graduated (cumulative)						5	1.0	126	24.8	215	42.3	242	47.7	249	49.1
2003	623														
Continued		443	71.7 ³	362	58.2	319	51.3	150	24.1	39	6.3	19	3.1		
Dropout (cumulative)			28.3		41.8		48.1		52.1		52.4		52.6		
Graduated (cumulative)						4	0.6	148	23.8	257	41.3	276	44.4		
2004	626														
Continued		470	75.1	371	59.3	341	54.6 ⁴	168	26.9	49	7.8				
Dropout (cumulative)			24.9		40.7		44.2		47.8		50.7				
Graduated (cumulative)						7	1.1	158	25.3	259	41.4				
2005	641														
Continued		473	73.9 ⁵	377	59.0 ⁶	346	54.1	161	25.2						
Dropout (cumulative)			26.1		41.0		45.2		46.5						
Graduated (cumulative)						4	0.6	181	28.3						
2006	668														
Continued		508	76.0	430	64.4	388	58.1								
Dropout (cumulative)			24.0		35.6		41.0								
Graduated (cumulative)						6	0.9								
2007	678														
Continued		513	75.7	437	64.5										
Dropout (cumulative)			24.3		35.5										
Graduated (cumulative)															
2008	654														
Continued		501	76.6												
Dropout (cumulative)			23.4												
Graduated (cumulative)															

¹ Frozen Student files are not available for Fall 2002
Adjusted cohorts due to deceased students: ²507, ³622, ⁴625, ⁵640, ⁶639

Source: WSC Colleague Data System

Degrees Conferred by CIP Code Category, FY 2009

<i>CIP Code Category</i>	<i>Bachelor</i>	<i>Post-Bacc. Certificate</i>	<i>Master</i>	<i>Post-Masters Certificate</i>
Adult Health Nurse/Nursing	15			
Biology Teacher Education		5		
Biology/Biological Sciences, General	49			
Biotechnology	13		6	
Business Administration and Management, General	181		7	
Chemistry, General	11			
Clinical Nurse Specialist			2	
Communication Disorders, General	15			
Communication Studies/Speech Communication and Rhetoric	37			
Community Health Services/Liaison/Counseling	13		8	
Computer and Information Sciences, General	16			
Criminal Justice/Safety Studies	57			
Early Childhood Education and Teaching	30		12	
Economics, General	9			
Education, General		32	7	
Educational Leadership and Administration, General			14	
Elementary Education and Teaching	26	31	15	
English Language and Literature, General	18			
English/Language Arts Teacher Education		13		
Foreign Language Teacher Education		8		
Geography	2			
Health Professions and Related Clinical Sciences, Other	23			
Health Services/Allied Health/Health Sciences, General		1		
Health/Health Care Administration/Management			11	
History Teacher Education		5		
History, General	44		9	
Junior High/Intermediate/Middle School Education & Teaching		1	17	
Kindergarten/Preschool Education and Teaching		10		
Mass Communication/Media Studies	34			
Mathematics Teacher Education		18		
Mathematics, General	8			
Non-Profit/Public/Organizational Management			9	
Nursing- Registered Nurse Training (RN, ASN, BSN, MSN)	42			
Occupational Therapy/Therapist	15		16	
Physical Sciences	17			
Political Science and Government, General		1		
Psychology, General	100			
Reading Teacher Education		10	5	
School Psychology			3	3
Science Teacher Education/General Science Teacher Education		2		
Secondary Education and Teaching			18	
Social Studies Teacher Education		7		
Sociology	14			
Spanish Language and Literature	10		1	
Special Education and Teaching, Other		24		
Speech-Language Pathology/Pathologist			24	
Teacher Education, Multiple Levels		18		
Urban Studies/Affairs	11			
Total	810	186	184	3

Source: IR Official DHE Degrees Conferred Files

Personnel Profile

Employees/Staff, Fall 2009

<i>EEO Category</i>	<i>Total</i>							<i>Male</i>	<i>Female</i>
	<i>Nonresident Alien</i>	<i>Black, non-Hispanic</i>	<i>American Indian/ Alaskan Native</i>	<i>Asian/Pacific Islanders</i>	<i>Hispanic</i>	<i>White, non-Hispanic</i>	<i>Unknown</i>		
Executive or Management	0	2	0	2	3	59	0	25	41
Professionals	0	1	0	4	5	67	0	26	51
Tech. Professionals	0	1	0	0	2	17	0	8	12
Clerical or Secretarial	0	5	0	1	2	68	0	7	69
Skilled Crafts	0	0	0	0	2	11	0	13	0
Service Maintenance	0	3	0	0	10	44	1	48	10
Total	0	12	0	7	24	266	1	127	183

<i>EEO Category</i>	<i>Full-Time</i>							<i>Male</i>	<i>Female</i>
	<i>Nonresident Alien</i>	<i>Black, non-Hispanic</i>	<i>American Indian/ Alaskan Native</i>	<i>Asian/Pacific Islanders</i>	<i>Hispanic</i>	<i>White, non-Hispanic</i>	<i>Unknown</i>		
Executive or Management	0	2	0	2	3	59	0	25	41
Professionals	0	1	0	4	5	64	0	25	49
Tech. Professionals	0	1	0	0	2	15	0	6	12
Clerical or Secretarial	0	5	0	1	2	58	0	6	60
Skilled Crafts	0	0	0	0	2	11	0	13	0
Service Maintenance	0	3	0	0	10	44	1	48	10
Total	0	12	0	7	24	251	1	123	172

<i>EEO Category</i>	<i>Part-Time</i>							<i>Male</i>	<i>Female</i>
	<i>Nonresident Alien</i>	<i>Black, non-Hispanic</i>	<i>American Indian/ Alaskan Native</i>	<i>Asian/Pacific Islanders</i>	<i>Hispanic</i>	<i>White, non-Hispanic</i>	<i>Unknown</i>		
Executive or Management	0	0	0	0	0	0	0	0	0
Professionals	0	0	0	0	0	3	0	1	2
Tech. Professionals	0	0	0	0	0	2	0	2	0
Clerical or Secretarial	0	0	0	0	0	10	0	1	9
Skilled Crafts	0	0	0	0	0	0	0	0	0
Service Maintenance	0	0	0	0	0	0	0	0	0
Total	0	0	0	0	0	15	0	4	11

Source: IR Official IPEDS HR Files

Faculty by Highest Degree, Fall 2009

<i>Awarding Institution</i>	<i>Graduates</i>	<i>Awarding Institution</i>	<i>Graduates</i>
Boston University	17	McGill University	1
University of Massachusetts-Amherst	11	Moscow University	1
University of Connecticut	10	New Hampshire College	1
Clark University	8	New York University	1
Worcester State College	7	Nichols College	1
University of California	6	North Carolina State University	1
Boston College	5	Ohio State University	1
Brandeis University	4	Penn State University	1
University of Minnesota-Minneapolis	4	Purdue University	1
University of Michigan	4	Rhode Island School of Design	1
Assumption College	3	Rice University	1
Indiana University	3	Rochester Institute of Technology	1
Michigan State University	3	Rutgers University	1
Nova College	3	Rutgers University-University College	1
University of New Hampshire	3	Southern Illinois University	1
Arizona State University	2	State University of New York-Albany	1
Colorado State University	2	State University of New York-Stony Brook	1
Columbia University-Columbia College	2	Texas A & M University	1
Cornell University	2	Thomas Jefferson University	1
Harvard University	2	University of Iowa	1
Northeastern University	2	University of Alabama	1
State University of New York-Buffalo College	2	University of Colorado	1
Temple University	2	University of Kansas	1
University of Cincinnati	2	University of Liverpool	1
University of Georgia	2	University of Louisville	1
University of Massachusetts-Boston	2	University of Maryland	1
University of Rhode Island	2	University of Massachusetts-Worcester	1
Vanderbilt University	2	University of Massachusetts Medical School	1
American University	1	University of Miami	1
Bentley University	1	University of Minnesota	1
Brown University	1	University of Mississippi	1
Carnegie-Mellon University	1	University of Nairobi	1
City University of New York	1	University of North Carolina	1
Clark Atlanta University	1	University of Pennsylvania	1
College of William and Mary	1	University of Pretoria	1
Eastman School of Music	1	University of South Carolina	1
Emerson College	1	University of Texas-Austin	1
Fitchburg State College	1	University of Virginia	1
Florida International University	1	University of Washington	1
Florida State University	1	University of Waterloo	1
Georgetown University	1	University of Wisconsin	1
Golden Gate University	1	Washington State University	1
Illinois State University	1	Wesleyan University	1
Indiana University-Pennsylvania	1	Worcester Polytechnic Institute	1
Massachusetts College of Liberal Arts	1	Yale University	1
		Total	179

Source: IR Official DHE HR Files

Full-time Faculty by Department and Rank, Fall 2009

<i>Department</i>	<i>Professor</i>	<i>Associate Professor</i>	<i>Assistant Professor</i>	<i>Instructor</i>	<i>Total</i>
Biology	5	3	3	0	11
Business and Economics	8	6	4	1	19
Chemistry	3	2	3	0	8
Communication	3	4	1	0	8
Communication Disorders	3	2	1	0	6
Computer Science	1	3	0	1	5
Criminal Justice	0	2	4	0	6
Earth Science	0	5	4	0	9
Education	4	5	1	0	10
Health Science	0	4	0	0	4
History/Political Science	2	5	5	1	13
Languages/Literature - English	5	11	2	0	18
Mathematics	1	4	3	1	9
Nursing	3	1	0	7	11
Occupational Therapy	1	2	3	0	6
Philosophy	4	0	1	0	5
Psychology	2	6	4	0	12
Sociology	0	2	1	1	4
Urban Studies	4	1	1	0	6
Visual & Performing Arts	4	2	3	0	9
Total	53	70	44	12	179

Source: IR Official DHE HR Files

Full-time Faculty by Gender and Ethnicity, Fall 2009

<i>Ethnicity</i>	<i>Male</i>	<i>Female</i>	<i>Total</i>
Nonresident Alien	0	0	0
Black, non-Hispanic	8	2	10
American Indian/Alaskan Native	0	0	0
Asian/Pacific Islander	6	11	17
Hispanic	5	3	8
White, non-Hispanic	67	76	143
Race/ethnicity unknown	0	1	1
Total	86	93	179

Full-time Faculty by Gender and Tenure, Fall 2009

<i>Tenure Status</i>	<i>Male</i>	<i>Female</i>	<i>Total</i>
Tenured	59	65	124
Non-tenured	15	17	32
Not on tenure track	12	11	23
Total	86	93	179

Full-time Faculty by Gender and Rank, Fall 2009

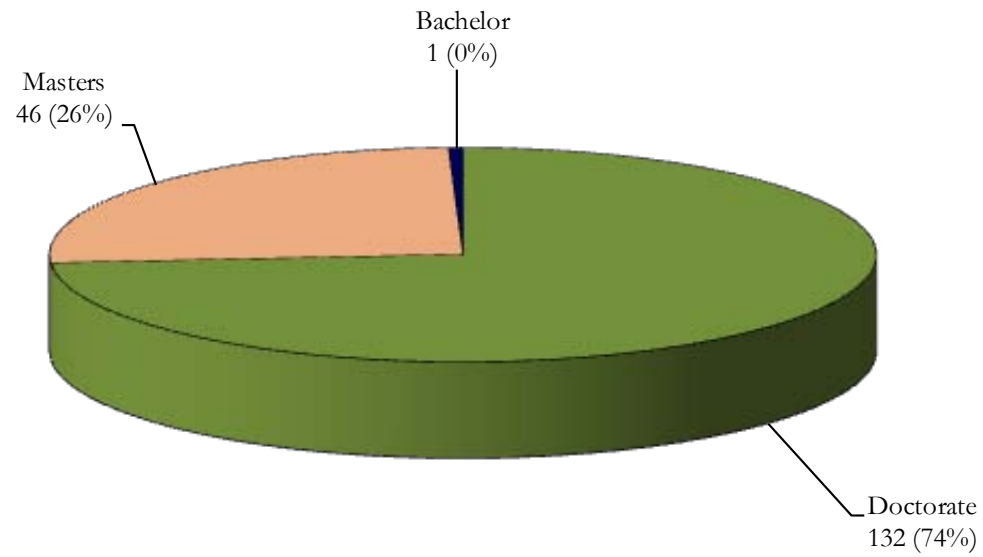
<i>Rank</i>	<i>Male</i>	<i>Female</i>	<i>Total</i>
Professor	27	26	53
Associate Professor	32	38	70
Assistant Professor	22	22	44
Instructor	5	7	12
Total	86	93	179

Full-time Faculty by Rank and Age Range, Fall 2009

<i>Age Range</i>	<i>Professor</i>	<i>Associate Professor</i>	<i>Assistant Professor</i>	<i>Instructor</i>	<i>Total</i>
Under 30	0	0	1	0	1
30 - 39	1	10	22	1	34
40 - 49	6	20	9	4	39
50 - 59	16	19	6	4	45
60 - 69	24	12	6	2	44
70 and over	6	9	0	1	16
Total	53	70	44	12	179

Source: IR Official IPEDS HR Files

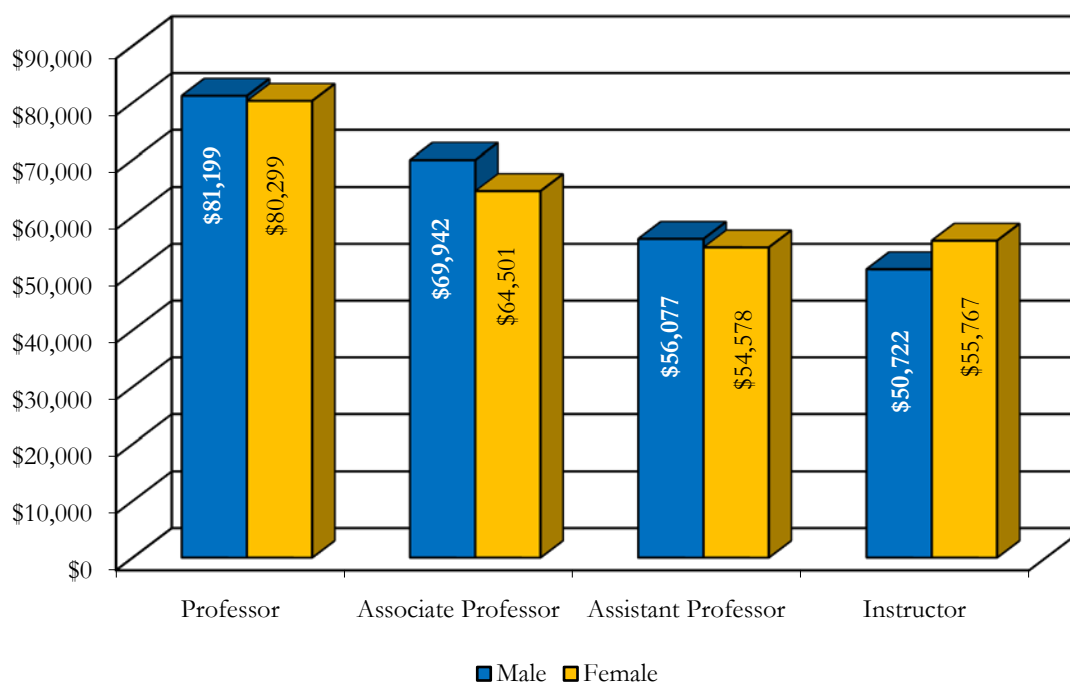
Full-time Faculty by Highest Degree Earned, Fall 2009



Source: IR Official IPEDS HR Files

Average Salaries of Full-time Faculty by Rank and Gender, Fall 2009

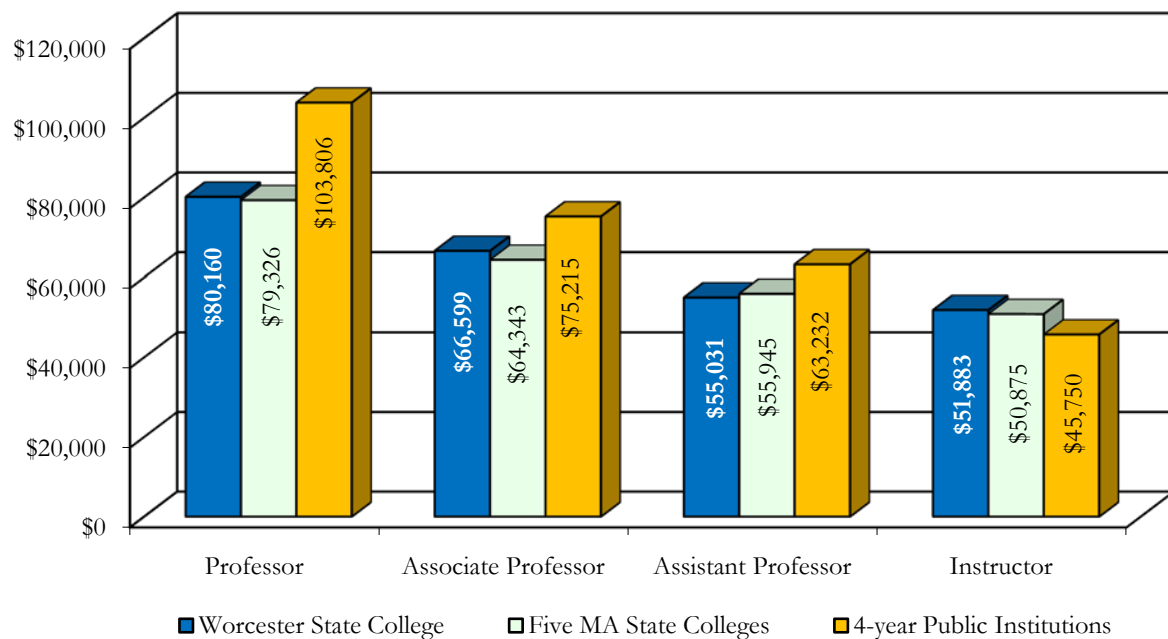
<i>Rank</i>	<i>Male</i>	<i>Female</i>	<i>Total</i>
Professor	\$81,199	\$80,299	\$80,758
Associate Professor	\$69,942	\$64,501	\$66,988
Assistant Professor	\$56,077	\$54,578	\$55,327
Instructor	\$50,722	\$55,767	\$53,665



Source: IR Official IPEDS HR Files

Average Faculty Salaries Comparison, AY 2008-2009

Rank	Worcester State College	Five MA State Colleges	4-year Public Institutions
Professor	\$80,160	\$79,326	\$103,806
Associate Professor	\$66,599	\$64,343	\$75,215
Assistant Professor	\$55,031	\$55,945	\$63,232
Instructor	\$51,883	\$50,875	\$45,750

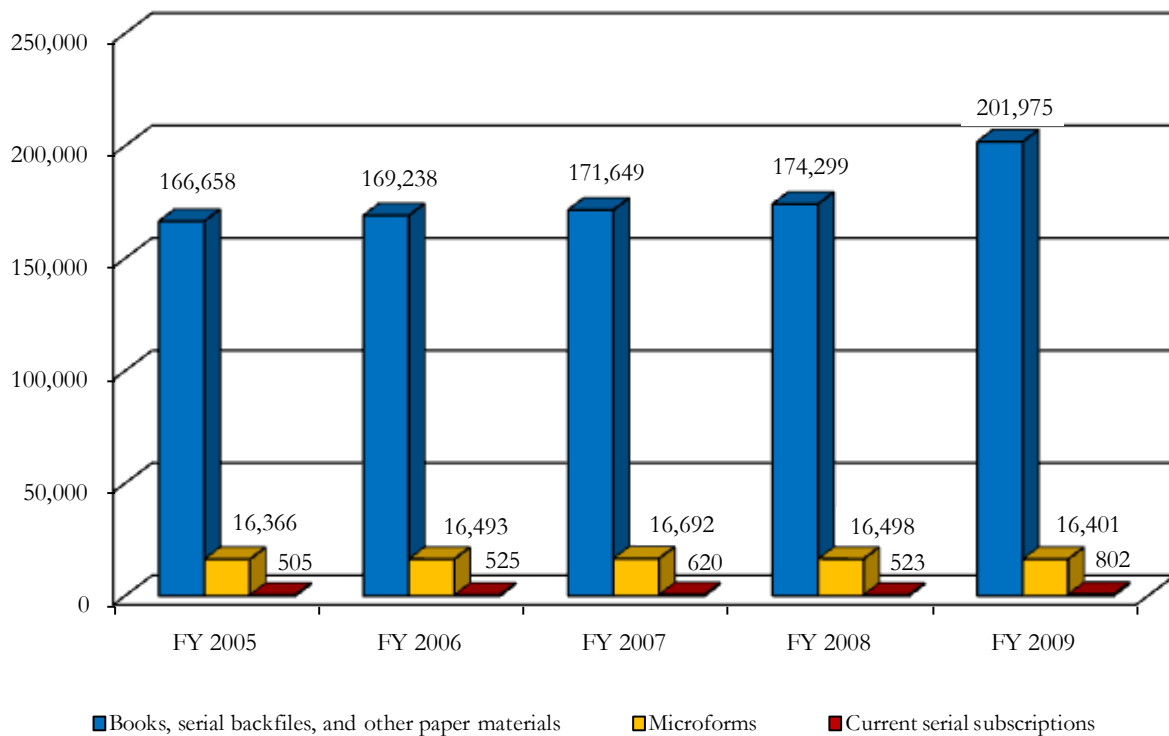


Source: IR Official IPEDS Salary Files

Library Information

Library Holdings, FY 2005 – FY 2009

Category	FY 2005	FY 2006	FY 2007	FY 2008	FY 2009
Books, serial backfiles, and other paper materials	166,658	169,238	171,649	174,299	201,975
Microforms	16,366	16,493	16,692	16,498	16,401
Current serial subscriptions	505	525	620	523	802



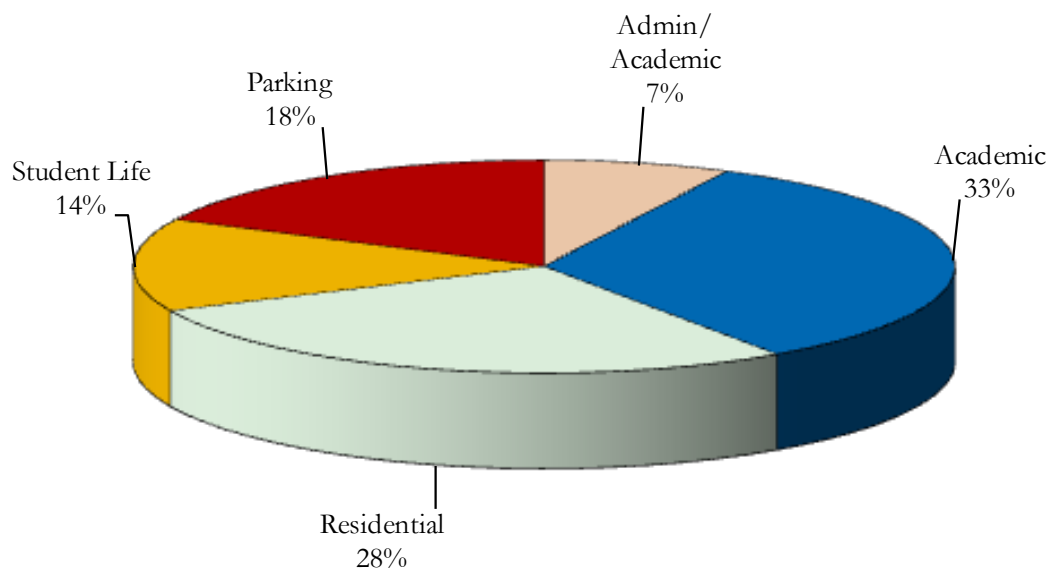
Source: NCES Library Reports

Facilities Information

Physical Plant Facilities, Fall 2009

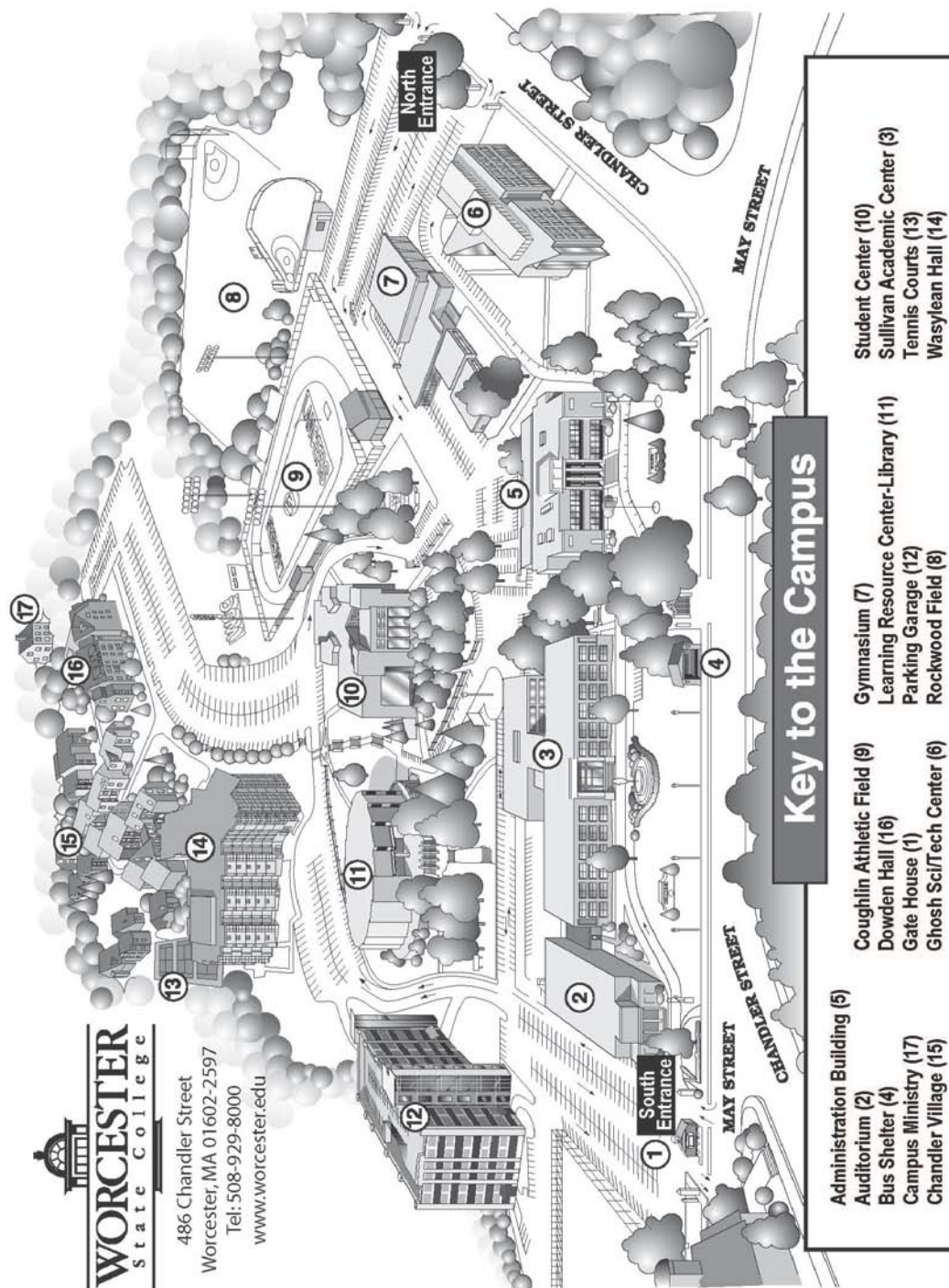
<i>Building Name</i>	<i>Primary Use</i>	<i>Gross sq. ft.</i>	<i>Assignable sq. ft.</i>	<i>Year</i>
1. Administration	Administrative	67,066	42,760	1932
2. Learning Resource Center	Library, Classrooms	113,335	92,745	1968
3. 96 Chicopee Street	Storage	1,170	936	1950
4. Sullivan Academic Center	Academic	110,690	74,315	1965
5. Science Tech Center	Academic	97,300	71,950	2000
6. Student Center	Student Affairs, Dining	71,416	46,080	1978
7. Gymnasium	Athletics, Art	65,676	39,425	1958
8. 102 Chicopee Street	Vacant	1,120	895	1940
9. 134 Glendale Street	Vacant	837	670	1952
10. 17 Candlewood Street	Campus Ministry	1,200	960	1927
11. Chandler Village	Housing	103,560	79,490	1973
12. Dowden Hall	Housing	56,600	32,660	1990
13. Wasylean Hall	Housing	109,000	70,510	2004
14. Parking Garage	Parking	172,317	155,085	2007

Facilities Overview



Source: Office of Facilities

Campus Map



Source: Publications and Printing Services

Institutional Advancement

Foundation Board of Directors 2009-2010

David E. Bedard '74, *President*
 Gregg H. Rosen '83, *Vice President*
 Mary C. Ritter, *Vice President*
 Edward L. Sherr, *Treasurer*
 Kathleen M. Eichelroth, CPA, *Assistant Treasurer*
 Thomas M. McNamara '94, *Clerk*
 George H. Albro '65
 Janelle C. Ashley, Ph.D.
 Mary K. Alexander, Ed.D.
 Keith E. Blanchette '98
 Jean M. Borgatti, Ph.D.
 Stephen J. Bostic '77
 Craig A. Bovaird '77
 John P. Brissette '88
 Jill C. Dagilis '78
 Andrew Davis
 Julia Dvorko, Ph.D.
 Gene J. DeFeudis
 Monica Escobar Lowell
 Mary Burke Fallon
 James D. Glickman
 Lillian R. Goodman, Ed. D.
 Richard E. Greene '54, Ed. D.
 Maryanne M. Hammond '69
 Kenneth P. Heekin
 Brendan J. King
 Charlotte Z. Klein '75
 George P. Leasca '77
 Daniel J. Mastrototaro
 Janet Wilson Moore
 William F. O'Neil '63, Ed. D.
 David H. Quist, Ed. D.
 R. David Richer
 Robert J. Spain '78
 George W. Tetler, III
 Richard E. Thomas
 Steven J. Ward '76

Alumni Association's Advisory Board 2009-2010

Sharon S. McDonald '86, *President*
 Amy L. Peterson '03, *Vice President*
 Vincent J. Matulaitis '66, *Secretary*
 Margaret C. Farrey '54, M.Ed.'78,
Executive Committee
 Dana J. Murphy '01, *Executive Committee*

Directors 2009-2010

Mark A. Aucoin '86, M.Ed. '00
 Derek S. Brindisi '99
 Camilla H. Caffrey
 Joseph C. Deely '56, M.Ed. '58, Colonel
 United States Air Force, Retired
 Louis E. DiMuzio '91
 Kristina M. Jackson '93
 Joshua L. Katz '06
 Catheryn C. McEvoy-Zdonczyk '95
 Gholamreza A. Namin '82, M. Ed. '85,
 C.A.G.S. '88, Ph.D.
 Theodore L. Provo* '61, M.Ed. '64, Ph.D.
 Richard J. Quinlivan '69
 Maureen D. Shamgochian '80, Ph.D.
 Nicole E. Valentine '96
 Steven J. Ward '76

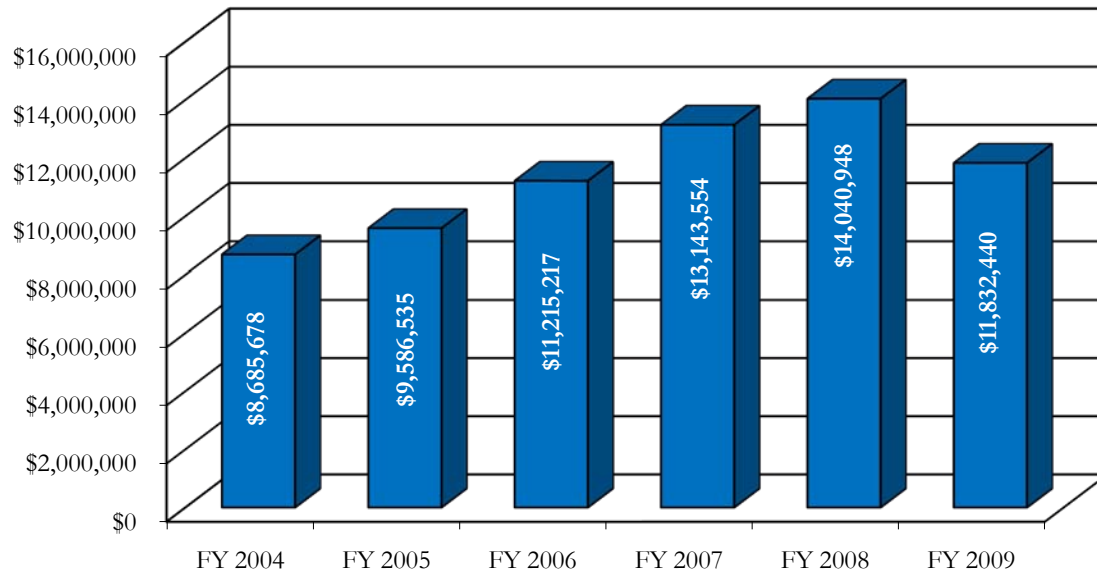
 Ronald R. Valerio '75, *Alumni Representative to
 the Board of Trustees*

 Lauren Kender '10, *SGA President/ Student
 Representative*

Note: * deceased

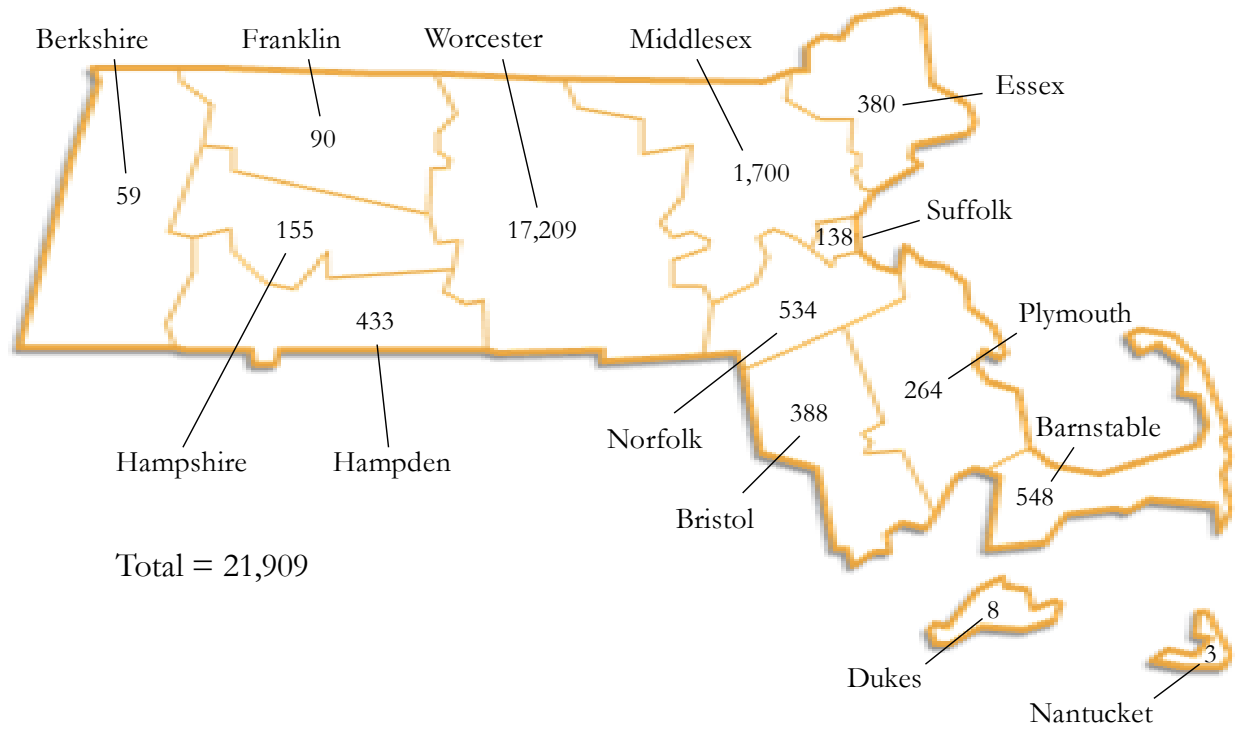
Source: Office of Institutional Advancement

Total Market Value of Endowment, FY 2004 – FY 2009



Source: Office of Institutional Advancement

Alumni by Massachusetts County of Residence, 2009

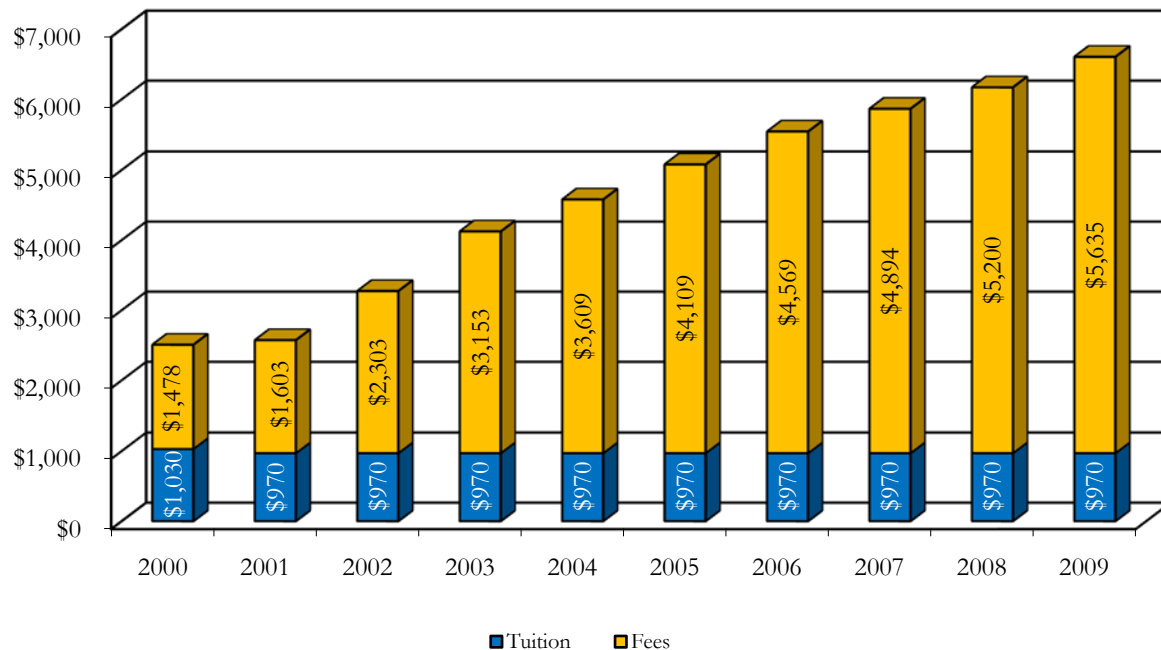


Source: Office of Institutional Advancement

Financial Information

Tuition and Fees per Academic Year, 2000 – 2009

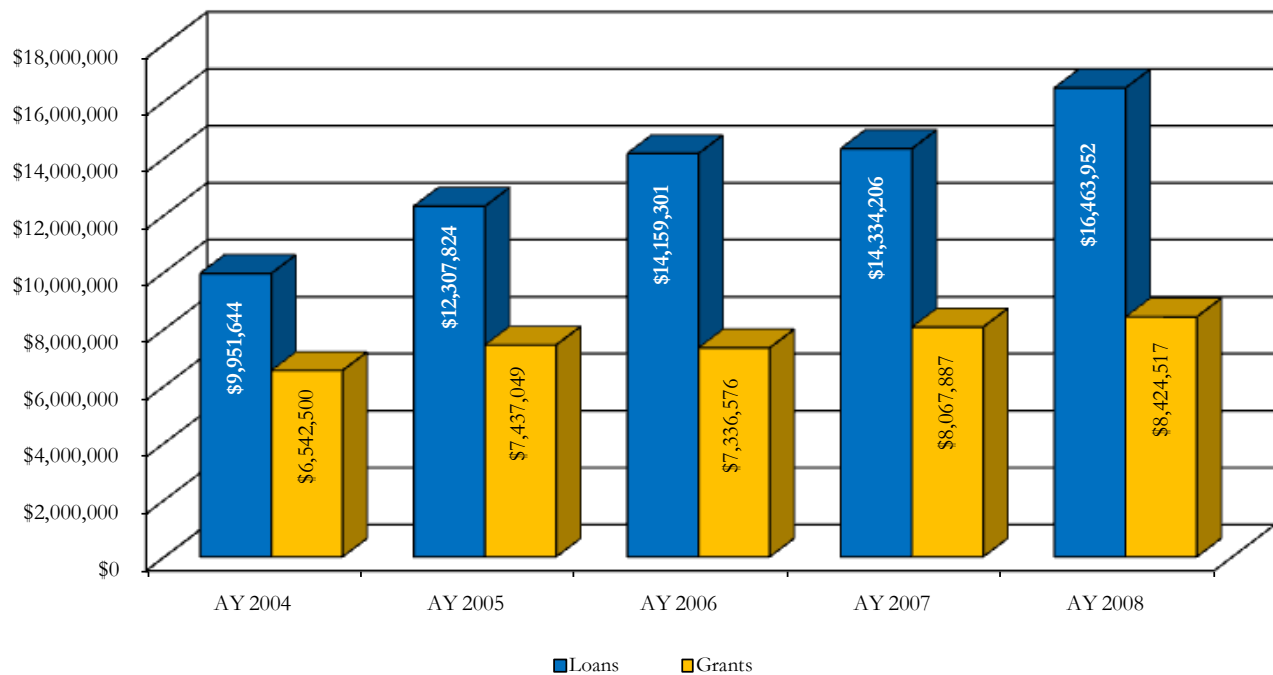
	<i>AY</i> 2000	<i>AY</i> 2001	<i>AY</i> 2002	<i>AY</i> 2003	<i>AY</i> 2004	<i>AY</i> 2005	<i>AY</i> 2006	<i>AY</i> 2007	<i>AY</i> 2008	<i>AY</i> 2009
Tuition	\$1,030	\$970	\$970	\$970	\$970	\$970	\$970	\$970	\$970	\$970
Fees	\$1,478	\$1,603	\$2,303	\$3,153	\$3,609	\$4,109	\$4,569	\$4,894	\$5,200	\$5,635
Total	\$2,508	\$2,573	\$3,273	\$4,123	\$4,579	\$5,079	\$5,539	\$5,864	\$6,170	\$6,605



Source: Office of Administration and Finance

Financial Aid Awards, AY 2004 - AY 2008

	<i>AY 2004</i>	<i>AY 2005</i>	<i>AY 2006</i>	<i>AY 2007</i>	<i>AY 2008</i>
Loans	\$9,951,644	\$12,307,824	\$14,159,301	\$14,334,206	\$16,463,952
Grants	\$6,542,500	\$7,437,049	\$7,336,576	\$8,067,887	\$8,424,517
Total	\$16,494,144	\$19,744,873	\$21,495,877	\$22,402,093	\$24,888,469



Source: Office of Financial Aid

Revenues and Expenditures, FY 2007 – FY 2009

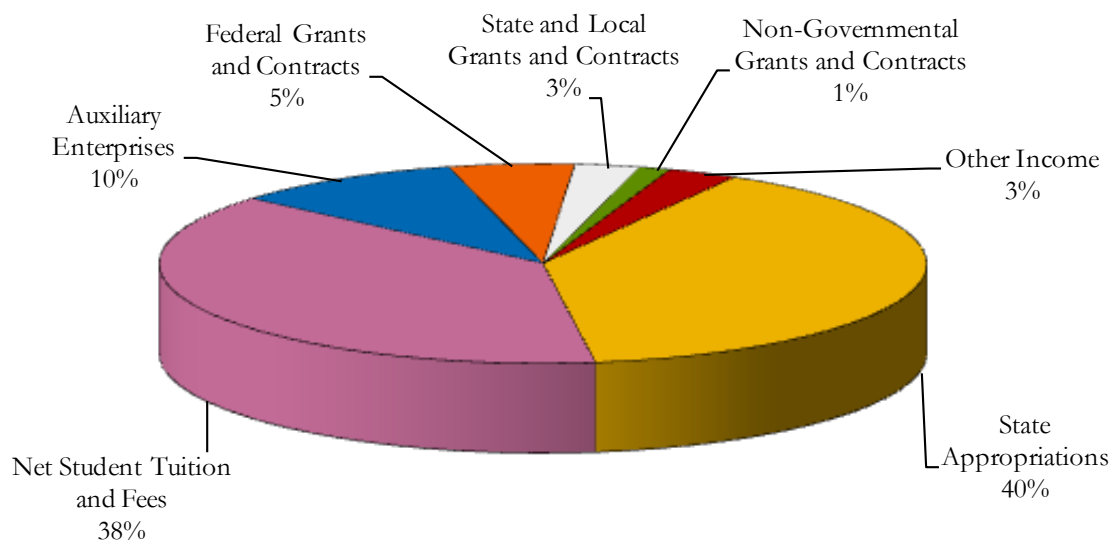
REVENUES	2009	2008	2007
Operating Revenues			
Student Tuition and Fees	\$ 30,480,355	\$ 28,246,121	\$ 26,687,982
Less: Scholarship Discounts and Allowance	5,242,157	3,923,175	3,153,048
Net Student Tuition and Fees	25,238,198	24,322,946	23,534,934
Federal Grants and Contracts	3,464,889	3,132,314	2,531,039
State and Local Grants and Contracts	1,796,950	1,424,140	1,556,975
Non-Governmental Grants and Contracts	866,656	850,334	739,041
Auxiliary Enterprises	6,405,207	5,843,101	5,658,282
Other Operating Revenues	1,217,067	1,102,785	962,260
Total Operating Revenues	<u>\$ 38,988,967</u>	<u>\$ 36,675,620</u>	<u>\$ 34,982,531</u>
EXPENSES			
Operating Expenses			
Instruction	\$ 25,228,769	\$ 27,257,287	\$ 24,371,832
Public Service	450,862	469,185	732,331
Academic Support	4,493,709	5,227,239	4,491,059
Student Services	5,938,335	6,088,357	5,950,965
Institutional Support	7,722,064	8,094,428	7,618,221
Operation and Maintenance of Plant	6,932,730	7,905,309	7,394,699
Scholarship	1,073,892	1,706,639	2,030,857
Depreciation	3,149,953	3,173,045	3,160,270
Debt Service	514,534	405,786	575,806
Auxiliary Enterprises	5,878,959	5,833,430	5,981,812
Total Operating Expenses	<u>\$ 61,383,807</u>	<u>\$ 66,160,705</u>	<u>\$ 62,307,852</u>
Operating Loss	<u>\$ (23,394,840)</u>	<u>\$ (29,485,085)</u>	<u>\$ (27,325,321)</u>
NON-OPERATING REVENUES			
State Appropriations	\$ 25,909,130	\$ 29,809,731	\$ 27,465,561
Interest and Investment Income	723,115	1,065,537	1,006,920
Other Non-Operating Revenues (Expenses)	(4,046)	337,852	394,279
Net Non-Operating Revenues	<u>\$ 26,628,199</u>	<u>\$ 31,213,120</u>	<u>\$ 28,866,760</u>
Income before other Revenues, Expenses, Gains or Losses	\$ 4,233,359	\$ 1,728,035	\$ 1,541,439
Capital Appropriations	12,976,819	3,156,280	958,732
Increase in Net Assets	17,210,178	4,884,315	2,500,171
NET ASSETS			
Beginning of Year	\$ 62,555,432	\$ 56,671,117	\$ 55,170,946
End of Year	<u>\$ 79,765,610</u>	<u>\$ 62,555,432</u>	<u>\$ 57,671,117</u>

Source: Financial Statements year ended June 30, 2009, 2008, and 2007 and Independent Auditor's Report

Fund Revenues by Source – FY 2009

REVENUES

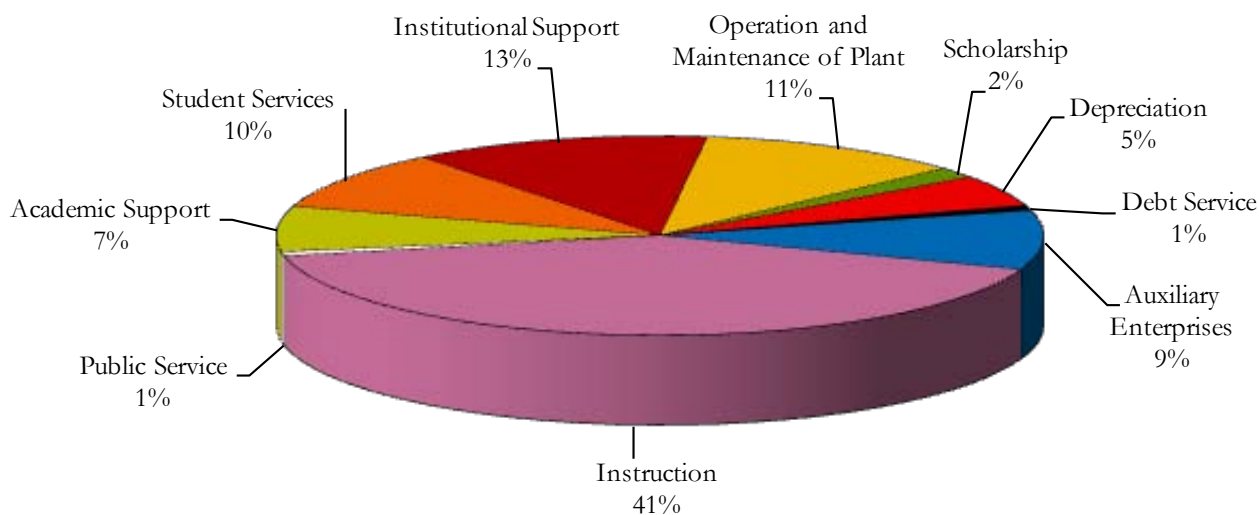
Total = \$65,617,166



Fund Expenditures by Functions – FY 2009

EXPENSES

Total = \$61,383,807



Source: Financial Statements year ended June 30, 2009, 2008, and 2007 and Independent Auditor's Report

Office of Institutional Research

Phone: (508) 929-8121

Fax: (508) 929-8083



Find Your Place at WSC