



---

# FACT BOOK 2006 & 2007





# Fact Book 2006 & 2007



**Office of Institutional Research  
Worcester State College  
486 Chandler Street  
Worcester, Massachusetts 01602-2597  
508-929-8781**

Prepared by:  
Kyung Im Noh

Kenneth Smith, Director of Institutional Research

*Worcester State College is an equal employment/education opportunity institution.*



# Table of Contents

## INTRODUCTION

PRESIDENT'S MESSAGE .....	1
BOARD AND ADMINISTRATION .....	2
DEPARTMENT CHAIRS .....	3
ORGANIZATIONAL CHART .....	4

## GENERAL INFORMATION

WORCESTER STATE COLLEGE SNAPSHOT, FALL 2006 .....	9
WORCESTER STATE COLLEGE SNAPSHOT, FALL 2007 .....	10
BRIEF HISTORY OF WSC .....	11
CORE VALUES .....	12
VISION .....	12
MISSION .....	12
STRATEGIC PRIORITIES FY 2004 – 2009 .....	13
ACCREDITATION .....	17

## STUDENT PROFILE

TOTAL HEADCOUNT ENROLLMENT, FALL 1998-2007 .....	19
STUDENT RESIDENCY (BY COUNTRY), FALL 2006 .....	20
STUDENT RESIDENCY (BY COUNTRY), FALL 2007 .....	21
STUDENT RESIDENCY (BY STATE), FALL 2006 .....	22
STUDENT RESIDENCY (BY STATE), FALL 2007 .....	23
STUDENT RESIDENCY (BY COUNTY), FALL 2006 .....	24
STUDENT RESIDENCY (BY COUNTY), FALL 2007 .....	25
DEGREE SEEKING, FIRST-TIME FRESHMEN, BY AGE, FALL 2006 .....	26
DEGREE SEEKING, FIRST-TIME FRESHMEN, HIGH SCHOOL GPA, FALL 2006 .....	26
DEGREE SEEKING, FIRST-TIME FRESHMEN, SAT SCORES, FALL 2006 .....	27
AVERAGE COMBINED SAT SCORE, FALL 2006 .....	27
DEGREE SEEKING, FIRST-TIME FRESHMEN, BY AGE, FALL 2007 .....	28
DEGREE SEEKING, FIRST-TIME FRESHMEN, HIGH SCHOOL GPA, FALL 2007 .....	28
DEGREE SEEKING, FIRST-TIME FRESHMEN, SAT SCORES, FALL 2007 .....	29
AVERAGE COMBINED SAT SCORE, FALL 2007 .....	29
DEGREE SEEKING, FIRST-TIME FRESHMEN, FALL 2006 .....	30
DEGREE SEEKING, FIRST-TIME FRESHMEN, FALL 2007 .....	31
NEW DEGREE SEEKING, TRANSFER STUDENTS BY AGE, FALL 2006 .....	32
NEW DEGREE SEEKING, TRANSFER STUDENTS BY RACE, FALL 2006 .....	32
TRANSFER INSTITUTIONS, FALL 2006 .....	33
NEW DEGREE SEEKING TRANSFER STUDENTS BY MAJOR, FALL 2006 .....	34
NEW DEGREE SEEKING TRANSFER STUDENTS, BY AGE, FALL 2007 .....	35
NEW DEGREE SEEKING TRANSFER STUDENTS, BY RACE, FALL 2007 .....	35
TRANSFER INSTITUTIONS, FALL 2007 .....	36
NEW DEGREE SEEKING TRANSFER STUDENTS BY MAJOR, FALL 2007 .....	37
TOTAL FULL-TIME STUDENTS, FALL 2006 .....	38
TOTAL PART-TIME STUDENTS, FALL 2006 .....	38
TOTAL FULL-TIME STUDENTS, FALL 2007 .....	39
TOTAL PART-TIME STUDENTS, FALL 2007 .....	39
TOTAL ENROLLMENT BY GENDER (FULL-TIME), FALL 2006 .....	40
TOTAL ENROLLMENT BY GENDER (PART-TIME), FALL 2006 .....	40
TOTAL ENROLLMENT BY GENDER (FULL-TIME), FALL 2007 .....	41
TOTAL ENROLLMENT BY GENDER (PART-TIME), FALL 2007 .....	41
TOTAL ENROLLMENT BY CLASS, FALL 2006 .....	42
TOTAL ENROLLMENT BY CLASS, FALL 2007 .....	42
ON-CAMPUS HOUSING BY STATE OF RESIDENCE AND CLASS, FALL 2006 .....	43

ON-CAMPUS HOUSING BY STATE OF RESIDENCE AND CLASS, FALL 2007 .....	44
<b>INSTRUCTIONAL PROGRAMS</b>	
ENROLLED MAJORS BY STUDENT CLASSIFICATION, FALL 2006 .....	45
ENROLLED MAJORS BY STUDENT CLASSIFICATION, FALL 2007 .....	46
<b>ACADEMIC ACHIEVEMENT/LEARNING OUTCOMES</b>	
GRADE DISTRIBUTION OF FIRST-TIME FRESHMEN, FALL 2006 .....	47
GRADE DISTRIBUTION OF FIRST-TIME FRESHMEN, FALL 2007 .....	47
RETENTION AND GRADUATION RATES .....	48
DEGREES CONFERRED, 2006 .....	49
DEGREES CONFERRED, 2007 .....	50
<b>PERSONNEL PROFILE</b>	
EMPLOYEES/STAFF, FALL 2006 .....	51
EMPLOYEES/STAFF, FALL 2007 .....	52
FACULTY BY HIGHEST DEGREES, FALL 2006 .....	53
FACULTY BY HIGHEST DEGREES, FALL 2007 .....	54
FULL-TIME FACULTY BY DEPARTMENT, FALL 2006 .....	55
FULL-TIME FACULTY BY DEPARTMENT, FALL 2007 .....	56
FULL-TIME FACULTY BY GENDER AND RACE, FALL 2006 .....	57
FULL-TIME FACULTY BY GENDER AND RACE, FALL 2007 .....	57
FULL-TIME FACULTY BY GENDER AND TENURE, FALL 2006 .....	57
FULL-TIME FACULTY BY GENDER AND TENURE, FALL 2007 .....	57
FULL-TIME FACULTY BY GENDER AND RANK, FALL 2006 .....	58
FULL-TIME FACULTY BY GENDER AND RANK, FALL 2007 .....	58
FULL-TIME FACULTY BY RANK AND AGE RANGE, FALL 2006 .....	58
FULL-TIME FACULTY BY RANK AND AGE RANGE, FALL 2007 .....	58
FULL-TIME FACULTY – HIGHEST DEGREE EARNED, FALL 2006 .....	59
FULL-TIME FACULTY – HIGHEST DEGREE EARNED, FALL 2007 .....	59
AVERAGE SALARIES OF FULL-TIME FACULTY, FALL 2006 .....	60
AVERAGE SALARIES OF FULL-TIME FACULTY, FALL 2007 .....	61
AVERAGE FACULTY SALARIES COMPARISON, 2006-2007 .....	62
<b>LIBRARY INFORMATION</b>	
LIBRARY HOLDINGS, 2003 - 2007 .....	63
<b>FACILITIES INFORMATION</b>	
PHYSICAL PLANT FACILITIES, 2006-2007 .....	65
FACILITIES OVERVIEW .....	65
CAMPUS MAP .....	66
<b>INSTITUTIONAL ADVANCEMENT</b>	
FOUNDATION BOARD OF DIRECTORS, ALUMNI BOARD, DIRECTORS .....	67
TOTAL MARKET VALUE OF ENDOWMENT .....	68
ALUMNI BY COUNTY OF RESIDENCE, 2006 .....	69
ALUMNI BY COUNTY OF RESIDENCE, 2007 .....	69
<b>FINANCIAL INFORMATION</b>	
TUITION AND FEES PER ACADEMIC YEAR, FALL 1998-2007 .....	71
FINANCIAL AID AWARDS, FALL 2002-2006 .....	72
REVENUES AND EXPENDITURES, FY 2006 – FY 2007 .....	73
FUND REVENUES BY SOURCE – FY 2007 .....	74
FUND EXPENDITURES BY FUNCTIONS – FY 2007 .....	74

## Introduction

---



Fact Book 2006 & 2007

---

## Introduction

### President's Message

#### A Message from Dr. Janelle Ashley, President of Worcester State College



Welcome to Worcester State College. We are delighted that you have found your place at Worcester State College. We are an engaged community of scholars and learners and one of our hallmarks is our undergraduate research. Imagine working side by side with a faculty member on an intriguing research project. Imagine working with award winning dynamic faculty including three Fulbright scholars. You will find a rigorous academic experience here and also the opportunity to extend your learning experience beyond the classroom. At Worcester State College, you will find learning opportunities around the globe. We offer myriad programs to choose from in Africa, Asia, Latin America, the Pacific, the Middle East, and across Europe.

At Worcester State College, students are our first priority. You will find a strong commitment from our distinguished teaching faculty and a caring support staff who will do everything they can to help you achieve your goals.

Within the safe and secure environment of our lovely campus, surrounded by residential neighborhoods and within easy distance to downtown Worcester, you will have countless opportunities. While most of our students come from Massachusetts and surrounding states, we educate students from more than 40 countries. Worcester State College is a microcosm of our global society with a diversity of age, race, ethnicity, and socio-economic backgrounds.

Our graduates will be prepared to not only enter fulfilling careers, but emerge with the tools they need to be engaged in their communities and to adapt to an ever-changing world.

I encourage you to contact anyone on our campus to embrace the opportunity of a lifetime.

Sincerely,

Janelle Ashley  
President



## Board and Administration

### Board of Trustees

George W. Tetler III, *Chair*  
Jean A. Campaniello '77, *Vice Chair*  
Michael K. Thomas, *Vice Chair*  
John P. Brissette '88  
Jeffrey L. Busha '90  
Lisa M. Giarrusso  
Brandon Huggon '08  
Stephen Paige  
Dennis Pojani  
Richard A. Sheppard  
Ronald R. Valerio '75

### Standing Committee 2006-2007

#### Academic/Student

Development: Jennie Caissie, *Chair*  
Jean Campaniello  
Phyllis Harrington  
Annie Kalashian

#### Finance and

Facilities: George Tetler, *Chair*  
John Brissette  
Elmer Eubanks  
Dennis Pojani

#### Human

Resources: Jennie Cassie, *Chair*  
Jeffrey Busha  
Stephen Paige

#### Planning and

Development: John Brissette, *Chair*  
Elmer Eubanks  
Phyllis Harrington  
Annie Kalashian  
Michael Thomas

Note: Chair George Tetler is an ex-officio voting member of each committee.  
President Ashley is an ex-officio non-voting member of each committee.

### Campus Administration

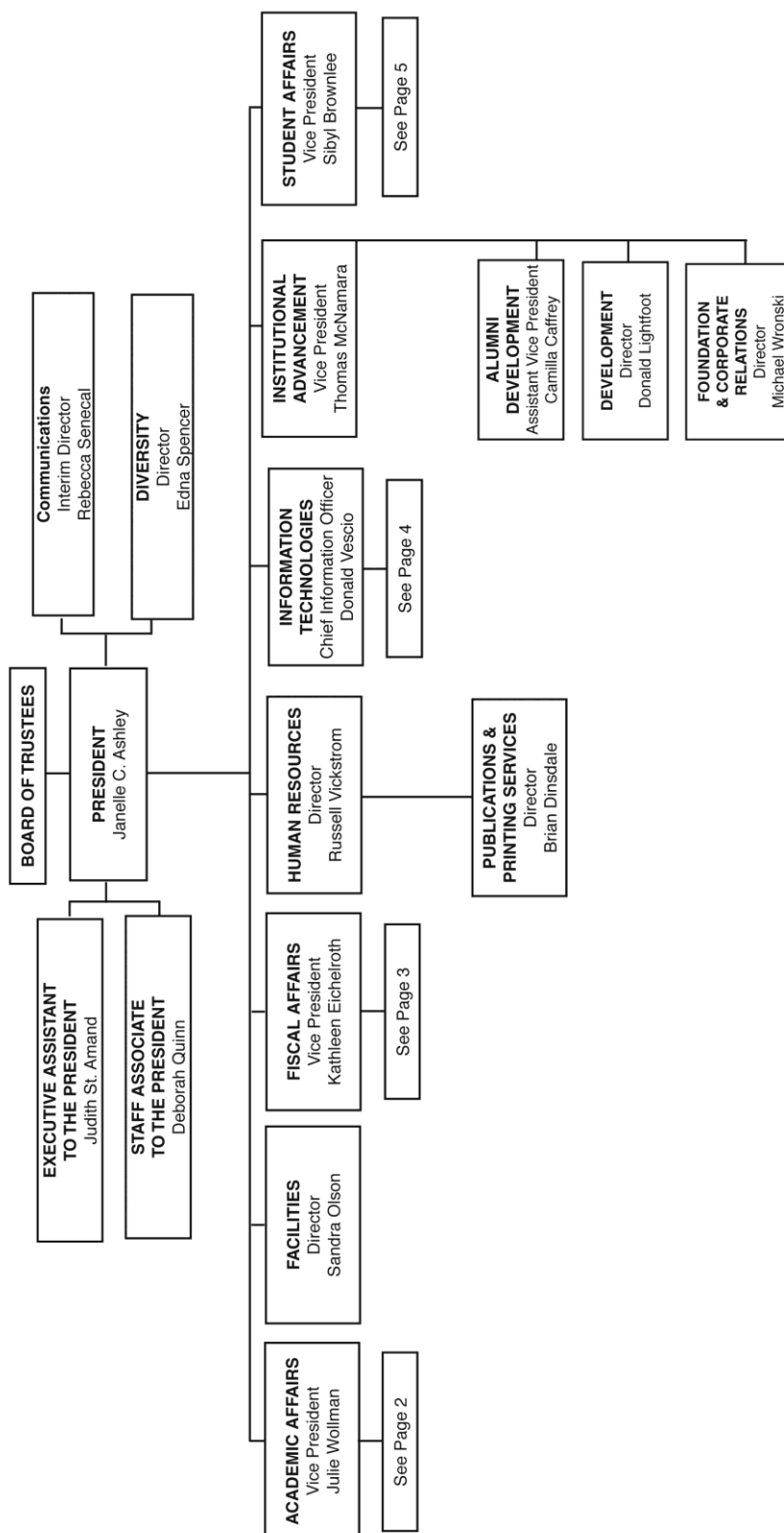
Janelle C. Ashley, *President*  
Sibyl Brownlee, *VP, Student Affairs*  
Kathleen Eichelroth, *VP, Fiscal Affairs*  
Thomas M. McNamara, *VP, Inst. Advancement*  
Julie Wollman, *VP, Academic Affairs*  
Maureen Shamgochian, *Assoc. VP, Academic Affairs*  
Robin Quill, *Assoc. VP Fiscal Affairs*  
William White, *Assoc. VP & Dean, Graduate and Continuing Education*  
Camilla Caffrey, *Asst. VP, Inst. Advancement*  
Annmarie Samar, *Asst. VP, Academic Affairs*  
Donald Vescio, *Chief Information Officer, Information Technology*  
Elisa Lopez-Dobski, *Executive Director, Interim, Latino Educational Institute*  
Robert Shafner, *Executive Director, Center for Health Professions*  
Beth Axelson, *Director, Admissions*  
Julie Chaffee, *Director, Registrar*  
Susan Chapman, *Director, Athletics*  
Donald D. Hochstetler, *Director, Library*  
Jayne McGinn, *Director of Financial Aid*  
Daniel Nicholes, *Director, Center for Business and Industry*  
Sandra Olson, *Director, Facilities*  
Rebecca Senecal, *Director, Interim, Public Relations and Marketing*  
Kenneth A. Smith, *Director, Institutional Research*  
Edna P. Spencer, *Director of Diversity and Affirmative Action*  
Timothy Sullivan, *Director, Student Center*  
Russell Vickstrom, *Director, Human Resources*  
Andrea Wamboldt, *Director, Academic Success*  
Rosemary Naughton, *Chief, Campus Police*  
Judith St.Amand, *Executive Assistant to the President*

## Department Chairs

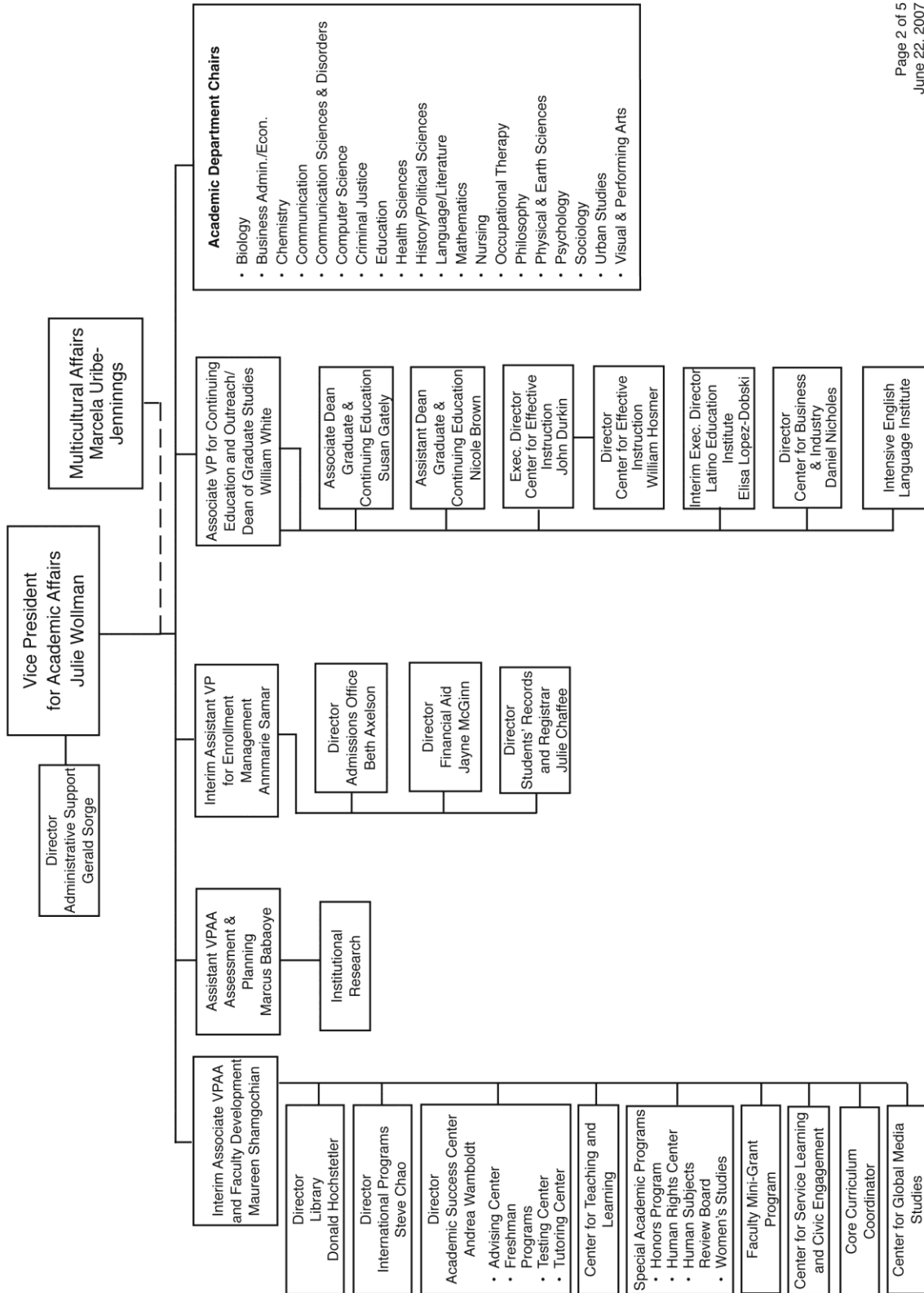
<i>Name</i>	<i>Department</i>	<i>Title</i>
Ellen Fynan	Biology	Chair
Renuka Jain	Business and Economics	Chair
Alan Cooper	Chemistry	Chair
Linda Larrivee	Communication Disorders	Chair
Don Bullens	Communication	Chair
Karl Wurst	Computer Science	Chair
Penny Martin	Criminal Justice	Chair
Elaine Tateronis	Education	Chair
Helena Semerjian	Health Sciences	Chair
Bruce Cohen	History/Political Science	Chair (2006)
Frank Minasian		Chair (2007)
Philip Burns	Languages/Literature - English	Chair
Richard Bisk	Mathematics	Chair
Andrea Wallen	Nursing	Chair
Joanne Gallagher	Occupational Therapy	Chair
Kristin Waters	Philosophy	Chair
Patricia Benjamin	Physical & Earth Science	Chair
Lori Dawson	Psychology	Chair
Corey Dolgon	Sociology	Chair
Steven Corey	Urban Studies	Chair
Michael Hachey	Visual & Performing Arts	Chair

## Organizational Chart

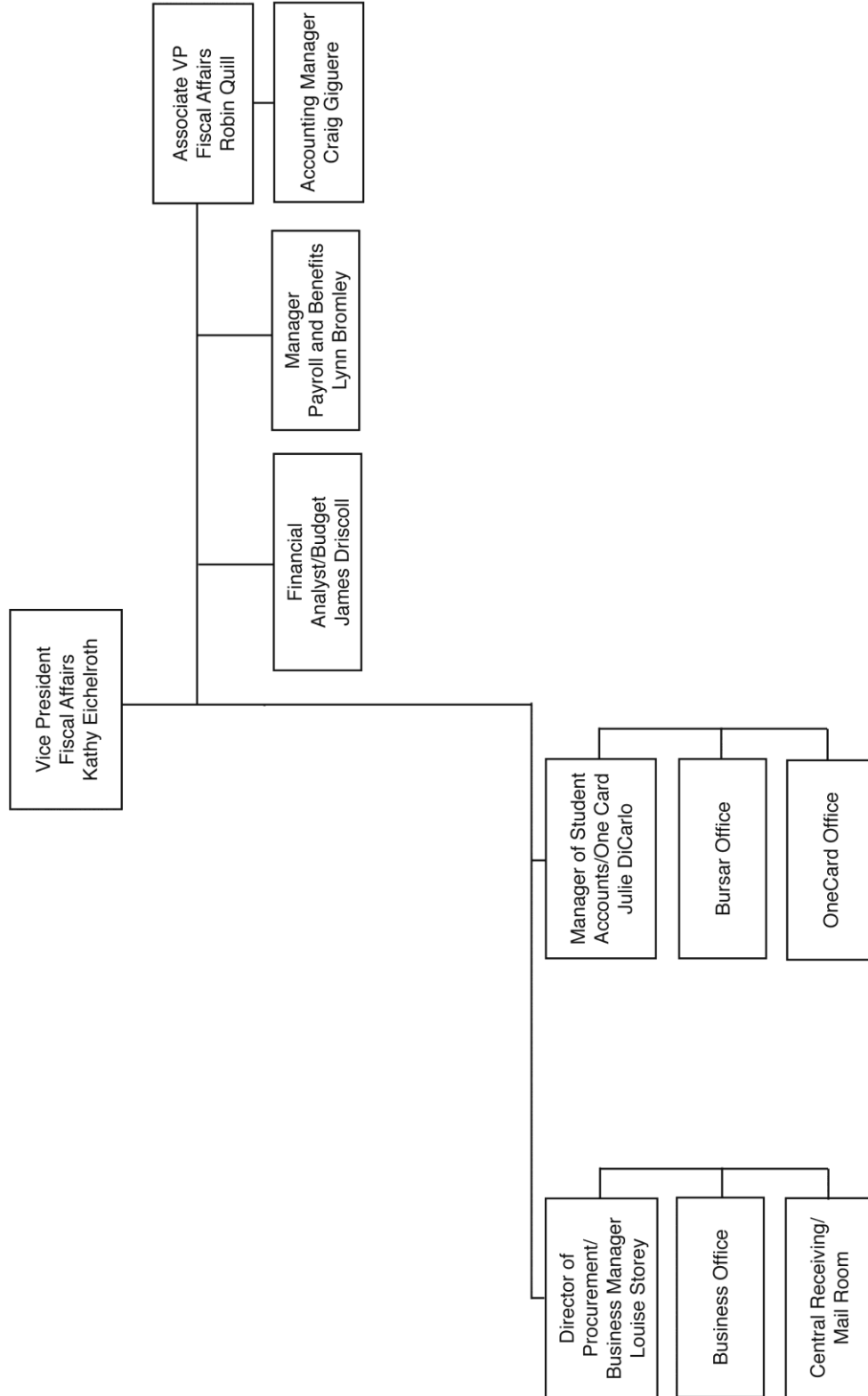
### WORCESTER STATE COLLEGE TABLE OF ORGANIZATION



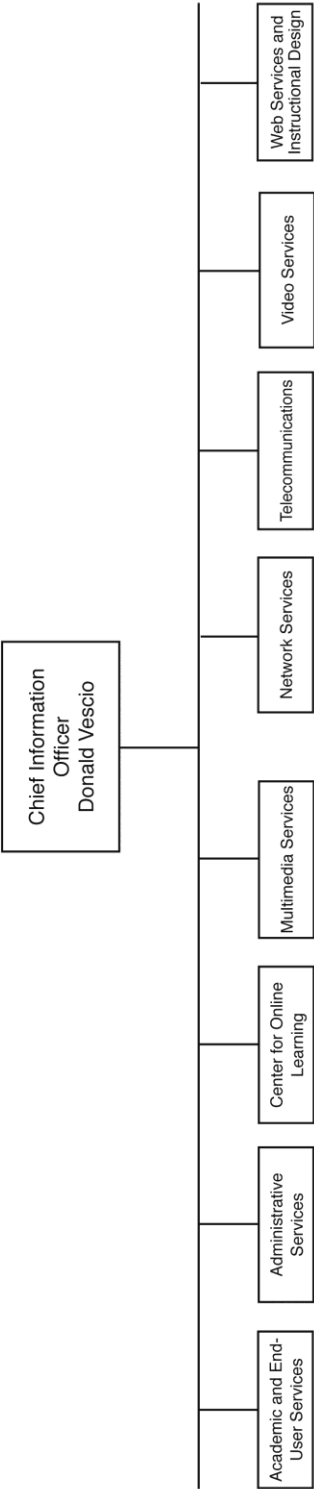
## Division of Academic Affairs



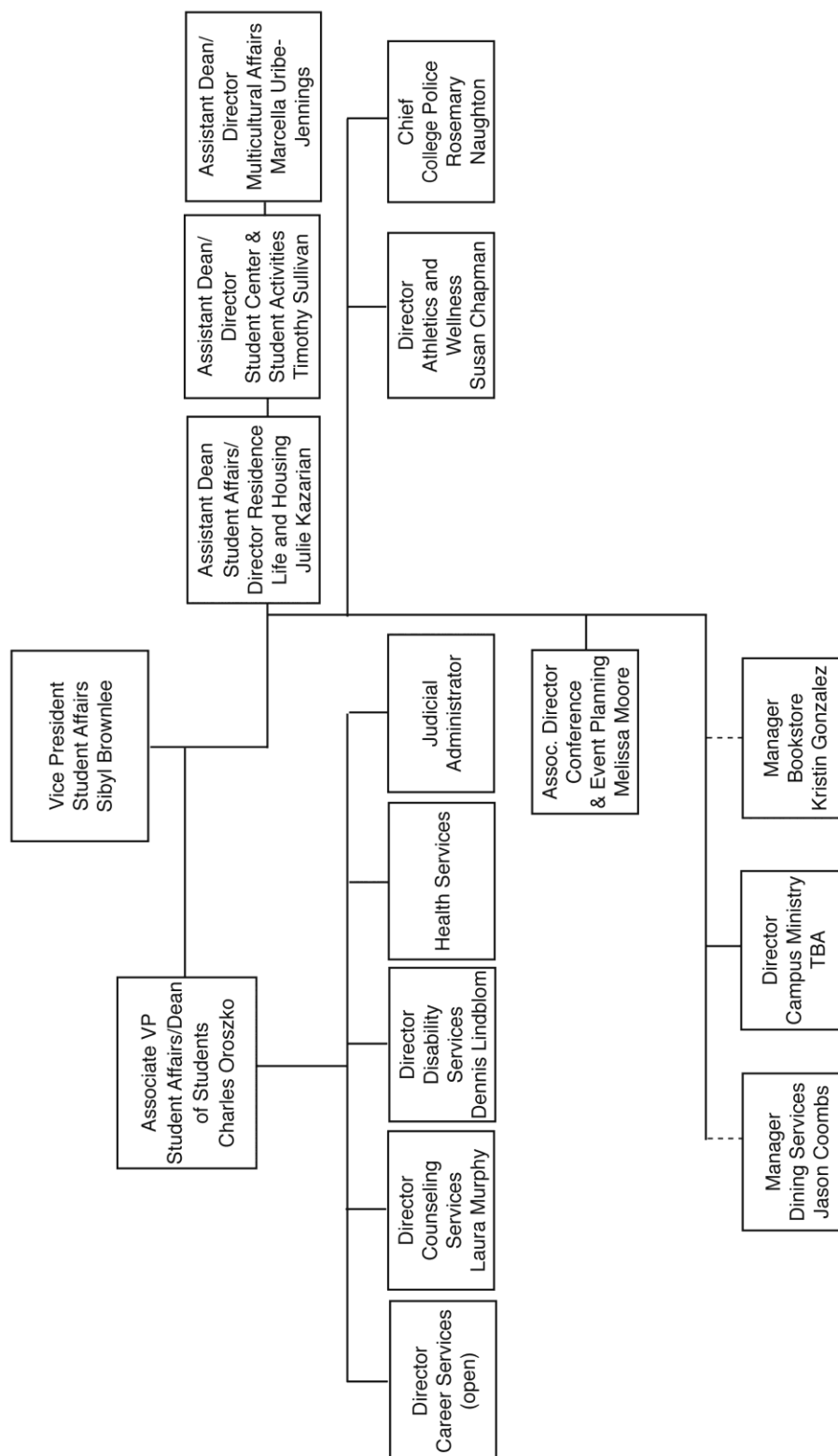
## Division of Fiscal Affairs



# Division of Information Technologies



## Division of Student Affairs



## General Information

---



Fact Book 2006 & 2007

---



## General Information

### Worcester State College Snapshot, Fall 2006

#### STUDENT PROFILE

##### Fall Enrollment 2006:

Undergraduate Full-Time	3,296
Undergraduate Part-Time	1,330
Graduate Full-Time	90
Graduate Part-Time	724
Total Headcount	5,440

##### Student Characteristics:

Women (Undergraduate)	60%
Men (Undergraduate)	40%
Out of State	3%
International (26 Countries)	2%
ALANA Students	10%
Residential Students	31%
Avg. Age – Undergraduate	25
Average HSGPA	2.97
Average SAT Score	1013
Retention (Fall '05, 1 <sup>st</sup> year)	74%
Graduation (1999, 6 <sup>th</sup> year)	43.3%

##### First-time Freshmen Admissions:

Applied	3,364
Accepted	1,878
Enrolled	684

##### Transfer Admissions:

Applied	1,331
Accepted	765
Enrolled	472

#### FINANCES

##### Cost of Attendance:

Undergraduate Tuition	\$970
Undergraduate Fees	\$4,569
Room and Board (Average)	\$7,738

##### Revenues (2005-2006):

State Appropriation	\$25,418,199
Tuition and Fees-Net	\$21,704,894
Other Sources	\$12,658,118
Total Revenues	\$59,781,211

##### Student Financial Aid (2005-2006):

Students Receiving FAID	2,667
Average Size of Award	\$7,383
Students on WSC Scholarships	1,107

##### Market Value of Funds under Mgmt:

Endowment:	\$7,501,659
------------	-------------

#### FACULTY-STAFF PROFILE

##### Faculty:

Full-Time	173
Part-Time Day Faculty	126
Part-Time CE Faculty	86
Full-Time Faculty with PhD/T Degree	129
Faculty to Full-Time Student Ratio	1:17

##### Staff:

Association of Professional Adm.	109
AFSCME	153
Non Unit Professionals	30

#### ACADEMICS

##### Academic Programs:

Undergraduate Majors	24
Undergraduate Minors	27
Graduate Programs	19
Study Abroad Programs	30

##### Largest Major (1<sup>st</sup> Major only):

Business Administration	790
Psychology	451
Criminal Justice	285
Communications	256
Nursing	244

##### Average Class Size

18

##### Completions (2005-2006):

Baccalaureates	729
Post Bachelor's Certificates	148
Master's	171
Total Graduates	1,048

#### STUDENT LIFE

Student Organizations and Clubs	40
Honor Societies	18

##### Intercollegiate Sports:

Men	9
Women	10

#### ALUMNI

Total Alumni	25,317
Alumni Living in MA	17,086
Alumni in Worcester County	13,555

## Worcester State College Snapshot, Fall 2007

### STUDENT PROFILE

#### Fall Enrollment 2007:

Undergraduate Full-Time	3,342
Undergraduate Part-Time	1,260
Graduate Full-Time	103
Graduate Part-Time	653
Total Headcount	5,358

#### Student Characteristics:

Women (Undergraduate)	59%
Men (Undergraduate)	41%
Out of State	4%
International (23 Countries)	1.5%
ALANA <sup>1</sup> Students	12%
Residential Students <sup>2</sup>	30%
Average Age (Undergraduate)	24
Average HSGPA	3.00
Average SAT Score	1010
Retention (Fall 2006, 1 <sup>st</sup> year)	76%
Graduation (2000, 6 <sup>th</sup> year)	37%

#### First-time Freshmen Admissions:

Applied	3,810
Accepted	2,030
Enrolled	699

#### Transfer Admissions:

Applied	1,315
Accepted	786
Enrolled	509

### FINANCES

#### Cost of Attendance:

Undergraduate Tuition	\$970
Undergraduate Fees	\$4,894
Room and Board (Average)	\$7,958

#### Revenues (2006-2007):

State Appropriation	\$27,465,561
Tuition and Fees-Net	\$23,534,934
Other Sources	\$13,807,528
Total Revenues	\$64,808,023

#### Student Financial Aid (2006-2007):

Students Receiving FAID	2,758
Average Size of Award	\$7,764
Students on WSC Scholarships	1,105

Market Value of Funds under Mgmt: \$13,143,554

### FACULTY-STAFF PROFILE

#### Faculty:

Full-Time	188
Part-Time Day Faculty	133
Part-Time CE Faculty	98
Full-Time Faculty with PhD/T Degree	140
Student to Faculty Ratio <sup>3</sup>	15 : 1

#### Staff:

Association of Professional Adm.	105
AFSCME	156
Non Unit Professionals	29

### ACADEMICS

#### Academic Programs:

Undergraduate Majors	24
Undergraduate Minors	27
Graduate Programs	21
Study Abroad Programs	44

#### Largest Major (1<sup>st</sup> Major only):

Business Administration	824
Psychology	440
Criminal Justice	293
Communications	258
Nursing	250

#### Average Undergraduate Class Size

	19
--	----

#### Degrees Conferred (2006-2007):

Baccalaureate's	758
Post Bachelor's Certificates	175
Master's	144
Total Degrees Conferred	1,077

### STUDENT LIFE

Student Organizations and Clubs	39
Honor Societies	17

#### Intercollegiate Sports:

Men	10
Women	10

### ALUMNI<sup>4</sup>

Total Alumni	30,440
Alumni Living in MA	20,272
Alumni in Worcester County	15,991

<sup>1</sup> ALANA (African-American, Latino, Asian, Native-American)

<sup>2</sup> Based only on Full-time, Degree-Seeking, Undergraduate Students

<sup>3</sup> FTE Students Taught/FTE Faculty

<sup>4</sup> Includes both Undergraduate and Graduate Degree Recipients. Previous years only included Undergraduate Degree Recipients.

## Brief History of WSC

1874	The State Normal School in Worcester was founded on September 11 <sup>th</sup> .
1920s	The Normal School introduced a four-year Bachelor of Science in Education degree.
1932	Became Worcester State Teacher's College (WSTC), and began awarding baccalaureate degrees in education.
1941	Became the first Massachusetts teacher's college to earn professional accreditation from the American Association of Teachers Colleges.
1963	The Board of Education renamed the school Worcester State College to reflect the expansion of Liberal Arts and Science disciplines.
1974	The College introduced a Bachelor of Science Degree in Business Administration, which has since grown into the largest program in the Worcester area. In this year the College also offered its first Graduate degree program, Master of Science in Education. 1974 also saw the establishment of the Nursing Program, the first Bachelor of Science program for registered nurses in New England, and the first to be accredited by the National League of Nursing.
1980	The area's first Master of Science degree in Speech-Language Pathology was offered, and the area's first college-operated Speech, Language, and Hearing Clinic was established.
1984	The first baccalaureate-level Occupational Therapy program in the Massachusetts State College system was established. These offerings expanded to include a Master of Occupational Therapy in 1998.
2000	The College established a Master of Science in Health Care Administration, built a state-of-the-art athletic field, established a campus-wide area network and website, and opened the Kaylan K. Ghosh Center for Science and Technology.
2002	The Board of trustees appointed Janelle C. Ashley as WSC's 10 <sup>th</sup> president.
2003	The Development and Alumni Relations Office was able to generate a record amount of funding from private sources, and increase the number of donors to the highest level in the College's history.
2004	The new 6-story, Wasylean Hall opened to 348 students, bringing the resident student population to nearly 1,000. The office of Institutional Advancement raised over \$2.2 million from over 3,500 donors, a record-breaking milestone at the College.
2005	The Eugene A. Sullivan Academic Center opened as a fully refurbished building equipped for full wireless technology and multi-media capability in every classroom.
2007	The very first parking garage in the state college system was opened at the College.

## **Core Values**

Worcester State College values inclusiveness and diversity, recognizes higher education's responsibility to society, and embraces the belief that widespread access to excellent educational opportunities is the cornerstone of a democratic society.

## **Vision**

Worcester State College is dedicated to offering high quality, affordable undergraduate and graduate academic programs and to promoting the lifelong intellectual growth, global awareness, and career opportunities of its students.

## **Mission**

Worcester State College, a public metropolitan institution of higher learning located in a culturally vibrant region of the Commonwealth, affirms the principles of liberal learning as the foundation for all traditional liberal arts and sciences disciplines, while maintaining its historical focus on teacher education. It has expanded its offerings with professional degree programs in biomedical sciences, business, and the health professions. Through its curricula, the college addresses the intellectual and career needs of the increasingly diverse citizenry of central Massachusetts.

Worcester State College is dedicated to offering high quality, affordable undergraduate and graduate academic programs and to promoting global awareness, lifelong intellectual growth, and career opportunities of its students. To this end, the college values teaching excellence rooted in scholarship and community service; cooperates with the business, social and cultural resources of Worcester County; collaborates with other institutions of higher learning in the region, and develops new programs responsive to emerging community needs.



## Strategic Priorities FY 2004 – 2009

### Academic and Student Affairs

#### **A. Develop a more integrated and interdisciplinary curriculum that includes a global perspective while strengthening and emphasizing the traditional focus on literacy and liberal learning**

##### Strategic Goals:

1. Include an increased focus on global issues and the global community as curriculum options for students within traditional undergraduate majors
2. Revise general education to provide more connections among disciplines and develop students' awareness of global issues while strengthening the traditional focus on literacy and liberal learning
3. Enhance connections to the diverse community of central Massachusetts through increased opportunities for community service and service learning

*Rationale:* It is increasingly apparent that the world has been transitioning to a new and more significant level of social, political, economic, and environmental integration. This priority focuses on educating students to function responsibly, effectively, and competitively in this new global environment.

#### **B. Increase the effectiveness of the academic support provided by the library and academic advising**

##### Strategic Goals:

1. Update and enhance library collections to support the curriculum, and provide adequate library staffing
2. Develop a state-of-the-art system of academic advising and tutoring available to all students
3. Develop effective linkages between Academic Affairs and Student Affairs to support students academic success

*Rationale:* Academic support and advising services must provide diverse students with the state-of-the-art tools and assistance they need to succeed in college and in their professional lives after graduation. Vital academic supports and services include thorough and well-informed academic advising, a library collection and staffing that adequately support the curriculum, and targeted tutoring services at both the departmental and college-wide levels.

#### **C. Enhance the quality and recognition of the graduate school**

##### Strategic Goals:

1. Identify and/or hire additional graduate faculty
2. Provide additional support for graduate student research and scholarship
3. Develop mission for graduate education that clarifies how it is intellectually distinct from undergraduate studies and its role within the College

***Rationale:** This priority stresses the development of a specific identity and mission for the graduate school that will assure the quality of graduate teaching, promote high academic standards for admission and graduation, and support graduate student performance, particularly in research and scholarship.*

**D. Increase the quantity and quality of co-curricular and student activities outside the classroom to engage commuter and residential students in campus life**

**Strategic Goals:**

1. Develop programs and activities that focus on cultural and global awareness to complement the curricular focus on a global perspective
2. Develop services and activities for an increased residential population and that also engage commuter students in campus life
3. Develop effective linkages between student affairs and academic affairs

***Rationale:** The experiences available to students outside of the formal curriculum play a critical part in the overall learning environment of the College. This priority focuses on providing a seamless learning environment that enhances and complements the classroom experience.*

**Assessment, Campus Diversity, and Decision Making**

**E. Increase our capacity to effectively assess student learning, academic supports, student affairs, and other key outcomes**

**Strategic Goals:**

1. Ensure that quality data is widely available for decision making
2. Develop and implement a departmentally based, faculty driven student learning outcome assessment process for each academic major
3. Develop and implement assessment strategies for academic supports, student affairs, and other key outcomes

***Rationale:** The College's ability to assess its effectiveness in a variety of areas and to use the information obtained to make improvements are critical to inform its planning, decision-making, and resource allocation. The important area of assessment of student learning outcomes must be faculty driven and departmentally based and supported by the availability of quality data systems.*

**F. Achieve a significant increase in diversity among our students, faculty, and administration**

**Strategic Goals:**

1. Implement specific strategies to develop a campus culture that is welcoming to a range of diverse students and employees
2. Utilize new approaches for recruitment and retention of a range of diverse faculty and administrators
3. Establish a target of 20% of new faculty hires from under-represented groups each year over the next 5 years
4. Implement methods designed to recruit and retain an increasingly diverse student body

***Rationale:** The importance of increasing the diversity of the campus community is supported by the fact that the citizenry of the Commonwealth, which we serve, is becoming increasingly diverse. A more diverse campus community will support the goals related to developing a global perspective established in other priorities. To successfully recruit and retain diverse faculty and students, it is essential to create a campus culture that is welcoming to people of color.*

#### **G. Engage faculty, students, and staff effectively in institutional decision making**

##### Strategic Goals:

1. Promote, nurture and sustain a sense of academic community among the faculty, students, and administration
2. Support and encourage faculty, students and staff to contribute appropriately to institutional decision making

***Rationale:** The central work of the College is accomplished in the interaction between faculty and students both within and outside the classroom. In all aspects of campus life, the best decisions will be made by incorporating the experience and expectations of faculty, students, and staff. The formal governance procedures specify important ways in which this priority can be met. The College should follow the contractual procedures in ways that ensure the broadest and fullest participation of faculty, students and staff in the decision making process.*

#### **Facilities and Grounds**

#### **H. Engage the campus community in a facility master planning process**

##### Strategic Goals:

1. Create physical facilities and a natural setting that reflect and support the mission, values and vision of the College
2. Develop a facilities master plan that reflects the needs of commuting students and the increased residential population
3. Design and support a sustainable information technology infrastructure

***Rationale:** In order to thrive in the future the College needs to maintain a high quality physical plant and natural environment that reflect and support its mission. A facility master plan is needed to guide the next phase of this ongoing process. The physical and natural spaces at the College should support and encourage the learning process envisioned in the College's strategic priorities, a vibrant social life, and exciting co-curricular events and student activities.*

#### **Fiscal Resources and Public Relations**

#### **I. Strengthen the link of fund raising strategies and stewardship of fiscal resources to the College's mission and strategic priorities**

##### Strategic Goals:

1. Support research and scholarship that connect the College with local and global communities
2. Initiate a capital campaign that supports the College's strategic priorities

*Rationale: The enhancement of revenue through fundraising and the careful stewardship of financial resources will be essential for the College to maintain and enhance its ability to fulfill its mission. The ongoing development of mutually advantageous community engagement should provide the foundation for a new capital campaign that will increase the endowment in a manner that targets key mission priorities.*

#### **J. Foster and communicate the sense of pride we have about the College**

Strategic Goals:

1. Focus on internal and external communities, state policy makers, and potential funders
2. Develop and implement communications strategies focused on key messages that capture the unique characteristics of the College and its strategic priorities

*Rationale: The College has much to be proud of and it is critical that this sense of accomplishment and pride be communicated effectively to prospective students and their families, state policy makers, potential funders, and regional and national academic constituencies.*



## Accreditation

Worcester State College is accredited by the New England Association of Schools and Colleges, Inc., a non-governmental, nationally recognized organization whose affiliated institutions include elementary schools through collegiate institutions offering postgraduate instruction.

Accreditation of an institution by the New England Association indicates that it meets or exceeds criteria for the assessment of institutional quality periodically applied through a peer group review process. An accredited school or college is one which has available the necessary resources to achieve its stated purposes through appropriate educational programs, is substantially doing so, and gives reasonable evidence that it will continue to do so in the foreseeable future. Institutional integrity is also addressed through accreditation.

The following programs are also accredited by their respective professional organizations:

- Nursing: The National League for Nursing
- Speech-Language Pathology: The American Speech-Language-Hearing Association
- Occupational Therapy: Accreditation Council for Occupational Therapy Education
- Nuclear Medicine Technology: The Joint Review Committee on Educational Programs in Nuclear Medicine Technology.

Worcester State College was named the “Best College in Worcester County” in Worcester Magazine’s Readers Poll three out of the past five years. The Princeton Review also designated the College a 2007 “America’s Best Value College” and a “Best Northeastern College” in 2005, 2006, and 2007.





## Student Profile

---

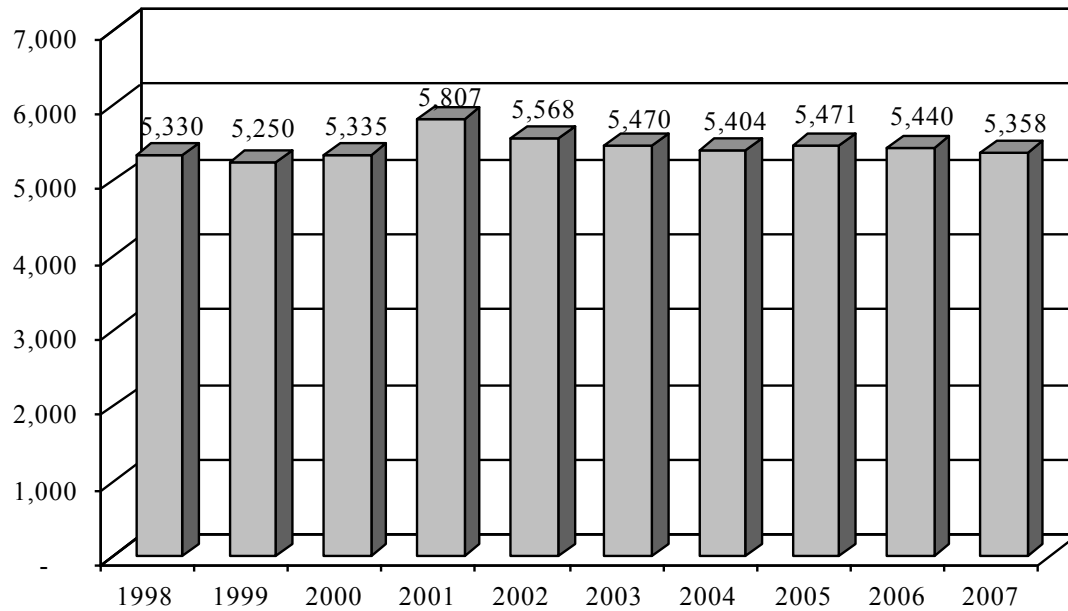


Fact Book 2006 & 2007

---

## Student Profile

### Total Headcount Enrollment, Fall 1998-2007



Source: IR Official DHE Fall Files

## Student Residency (by Country), Fall 2006

<i>Country</i>	<i>Undergraduate</i>	<i>Graduate</i>	<i>Total</i>
Albania	11	1	12
Brazil	4	0	4
Canada	2	0	2
Cote D'Ivoire	2	0	2
Cameroon	1	0	1
China	18	2	20
Cuba	0	1	1
Fiji	1	0	1
Ghana	1	1	2
Ireland	0	1	1
India	2	1	3
Italy	1	0	1
Japan	0	1	1
Kenya	36	4	40
Korea, Republic of (S)	1	0	1
Liberia	1	0	1
Moldova, Republic of	1	0	1
Niger	1	0	1
Nigeria	4	1	5
Poland	4	0	4
Romania	1	0	1
Russian Federation	1	0	1
Sweden	1	1	2
Tanzania, United Republic of	0	1	1
United States	4,530	799	5,329
Vietnam	1	0	1
Zimbabwe	1	0	1
<b>Total</b>	<b>4,626</b>	<b>814</b>	<b>5,440</b>

Source: IR Official DHE Fall Files

## Student Residency (by Country), Fall 2007

<i>Country</i>	<i>Undergraduate</i>	<i>Graduate</i>	<i>Total</i>
Albania	9	2	11
Brazil	3	1	4
Canada	2	0	2
Cote D'Ivoire	2	0	2
Cameroon	2	1	3
China	8	1	9
Fiji	1	0	1
United Kingdom	1	1	2
Ghana	0	4	4
Ireland	0	1	1
India	1	0	1
Italy	1	0	1
Jamaica	0	1	1
Kenya	18	3	21
Korea, Republic of (S)	1	0	1
Liberia	2	0	2
Moldova, Republic of	1	0	1
Niger	1	0	1
Nigeria	3	1	4
Peru	1	0	1
Poland	4	0	4
Sweden	1	1	2
Turkey	1	0	1
Tanzania, United Republic of	0	1	1
Uganda	1	0	1
United States	4,535	738	5,273
Vietnam	2	0	2
Zimbabwe	1	0	1
<b>Total</b>	<b>4,602</b>	<b>756</b>	<b>5,358</b>

Source: IR Official DHE Fall Files

## Student Residency (by State), Fall 2006

<i>State</i>	<i>Undergraduate</i>			<i>Graduate</i>			<i>Total</i>
	<i>Male</i>	<i>Female</i>	<i>Total</i>	<i>Male</i>	<i>Female</i>	<i>Total</i>	
Connecticut	22	27	49	3	8	11	60
Florida	2	0	2	0	0	0	2
Georgia	1	0	1	0	0	0	1
Maine	2	1	3	0	1	1	4
<b>Massachusetts</b>	<b>1,726</b>	<b>2,683</b>	<b>4,409</b>	<b>190</b>	<b>583</b>	<b>773</b>	<b>5,182</b>
Nebraska	1	0	1	0	0	0	1
New Hampshire	9	17	26	1	2	3	29
New Jersey	2	1	3	0	2	2	5
New York	8	2	10	0	1	1	11
Pennsylvania	3	0	3	0	0	0	3
Rhode Island	5	16	21	2	6	8	29
Vermont	2	0	2	0	0	0	2
Non-US Citizen	45	51	96	7	8	15	111
<b>Total</b>	<b>1,828</b>	<b>2,798</b>	<b>4,626</b>	<b>203</b>	<b>611</b>	<b>814</b>	<b>5,440</b>

Source: IR Official DHE Fall Files

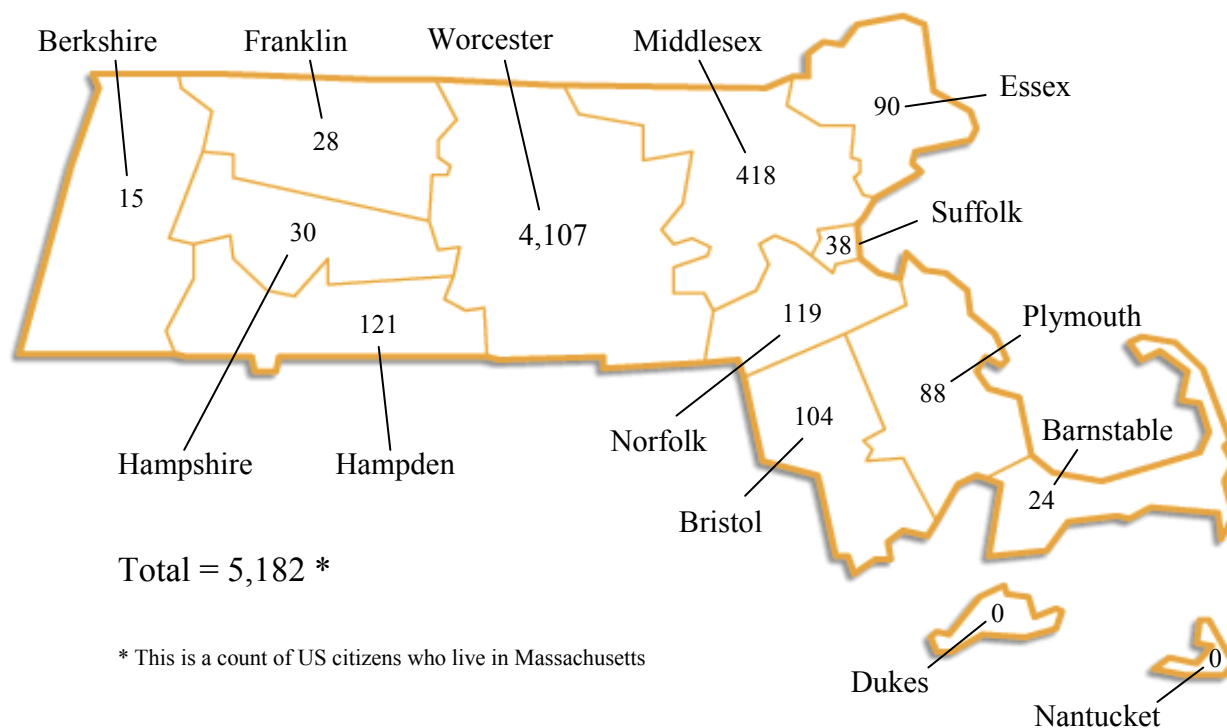
## Student Residency (by State), Fall 2007

State	Undergraduate			Graduate			Total
	Male	Female	Total	Male	Female	Total	
Arizona	1	0	1	0	0	0	1
Connecticut	16	26	42	4	3	7	49
Florida	1	0	1	0	0	0	1
Georgia	1	0	1	0	0	0	1
Indiana	1	0	1	0	0	0	1
Maine	0	4	4	0	1	1	5
<b>Massachusetts</b>	<b>1,791</b>	<b>2,620</b>	<b>4,411</b>	<b>186</b>	<b>533</b>	<b>719</b>	<b>5,130</b>
Minnesota	0	1	1	0	0	0	1
Nebraska	1	0	1	0	0	0	1
New Hampshire	8	18	26	1	3	4	30
New Jersey	3	1	4	0	0	0	4
New York	6	2	8	0	0	0	8
North Carolina	0	0	0	0	1	1	1
Pennsylvania	3	0	3	0	0	0	3
Rhode Island	11	16	27	1	5	6	33
South Carolina	0	1	1	0	0	0	1
Vermont	1	2	3	0	0	0	3
Non-US Citizen	35	32	67	9	9	18	85
<b>Total</b>	<b>1,879</b>	<b>2,723</b>	<b>4,602</b>	<b>201</b>	<b>555</b>	<b>756</b>	<b>5,358</b>

Source: IR Official DHE Fall Files



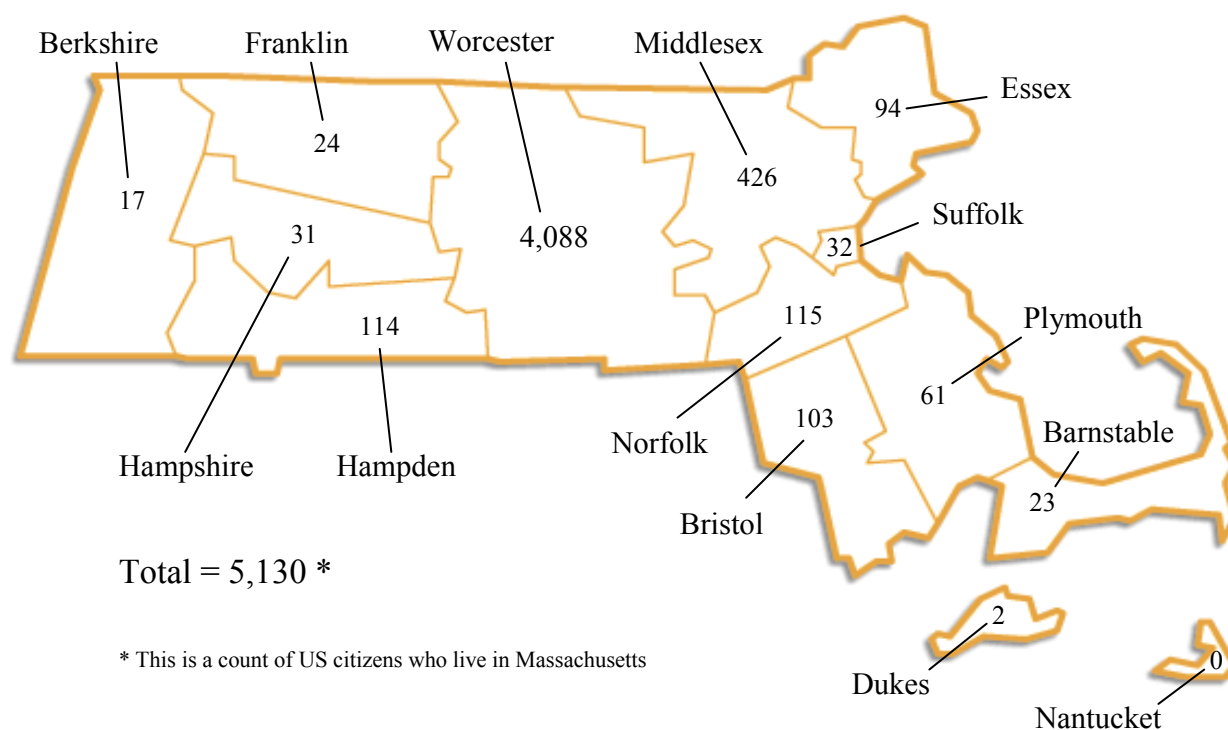
## Student Residency (by County), Fall 2006



County	Undergraduate	Graduate	Total
Barnstable	22	2	24
Berkshire	15	0	15
Bristol	97	7	104
Dukes	0	0	0
Essex	86	4	90
Franklin	24	4	28
Hampden	101	20	121
Hampshire	25	5	30
Middlesex	365	53	418
Nantucket	0	0	0
Norfolk	97	22	119
Plymouth	59	29	88
Suffolk	30	8	38
Worcester	3,488	619	4,107
<b>Total</b>	<b>4,409</b>	<b>773</b>	<b>5,182</b>

Source: IR Official DHE Fall Files

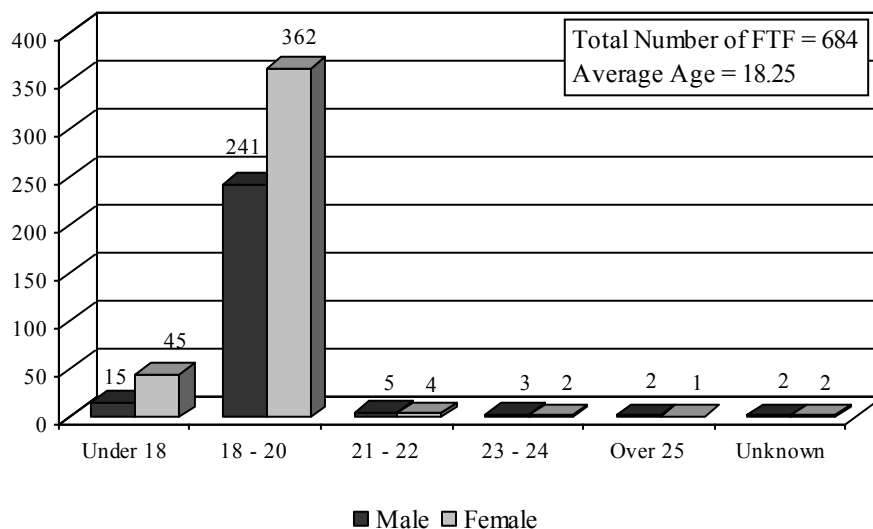
## Student Residency (by County), Fall 2007



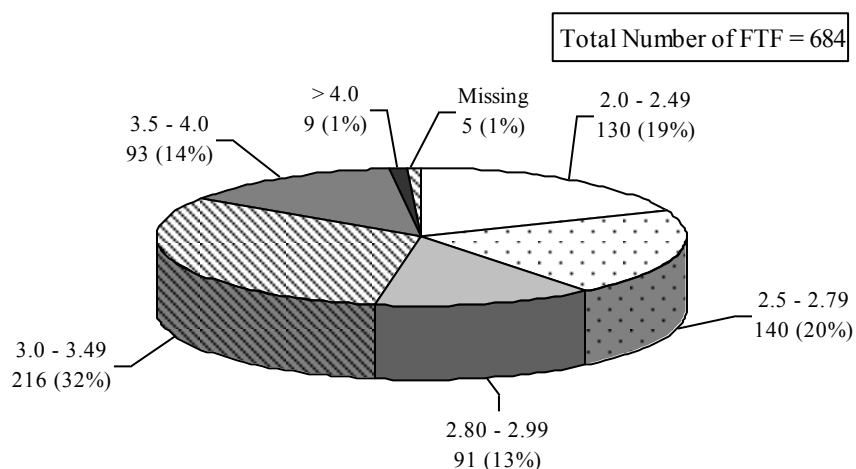
County	Undergraduate	Graduate	Total
Barnstable	21	2	23
Berkshire	16	1	17
Bristol	94	9	103
Dukes	2	0	2
Essex	85	9	94
Franklin	19	5	24
Hampden	90	24	114
Hampshire	27	4	31
Middlesex	380	46	426
Nantucket	0	0	0
Norfolk	96	19	115
Plymouth	56	5	61
Suffolk	30	2	32
Worcester	3,495	593	4,088
<b>Total</b>	<b>4,411</b>	<b>719</b>	<b>5,130</b>

Source: IR Official DHE Fall Files

## Degree Seeking, First-time Freshmen by Age, Fall 2006



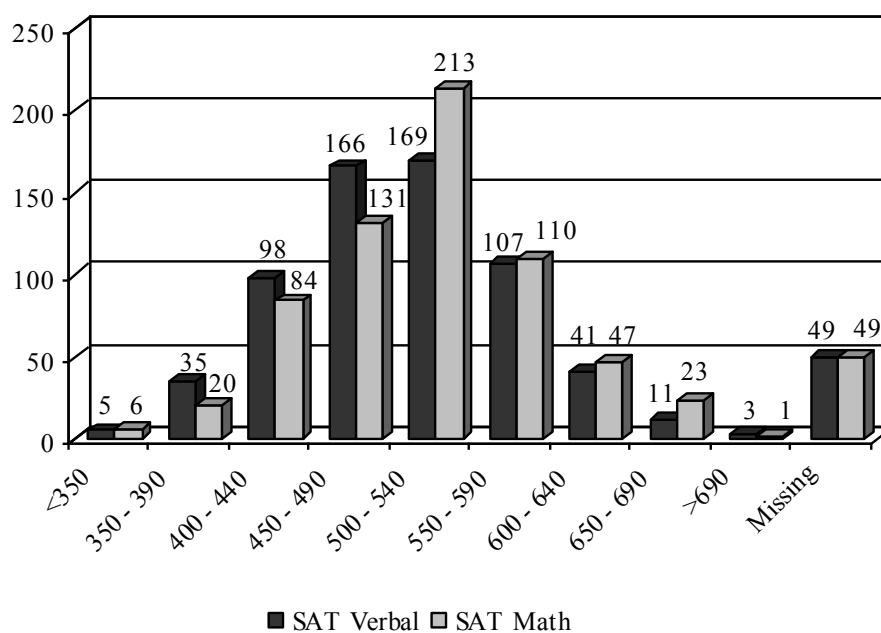
## Degree Seeking, First-time Freshmen High School GPA, Fall 2006



Source: IR Official DHE Fall Files

## Degree Seeking, First-time Freshmen SAT Scores, Fall 2006

Score Range	SAT Verbal			SAT Math		
	Male	Female	Total	Male	Female	Total
<350	0	5	5	1	5	6
350 - 390	12	23	35	3	17	20
400 - 440	37	61	98	22	62	84
450 - 490	63	103	166	51	80	131
500 - 540	60	109	169	76	137	213
550 - 590	47	60	107	49	61	110
600 - 640	20	21	41	29	18	47
650 - 690	5	6	11	14	9	23
>690	2	1	3	1	0	1
Missing	22	27	49	22	27	49
<b>Total</b>	<b>268</b>	<b>416</b>	<b>684</b>	<b>268</b>	<b>416</b>	<b>684</b>



## Average Combined SAT Score, Fall 2006

Male 1036.9

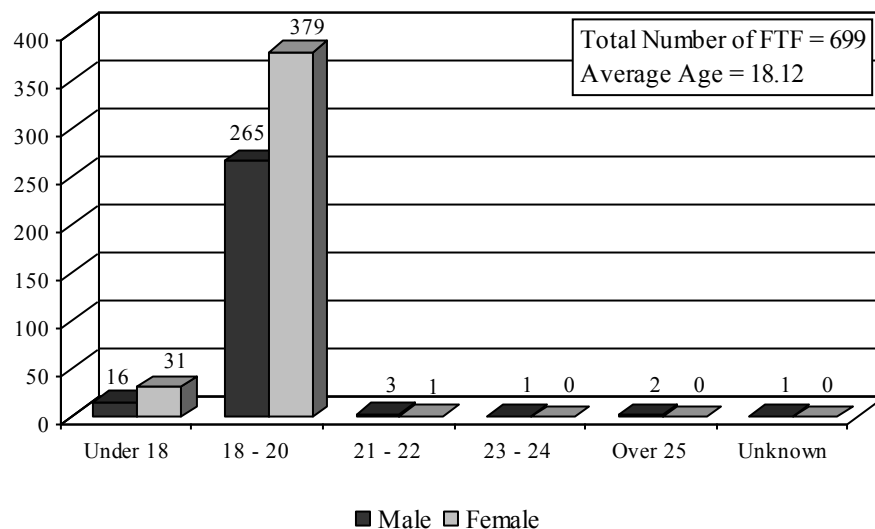
Female

998.3

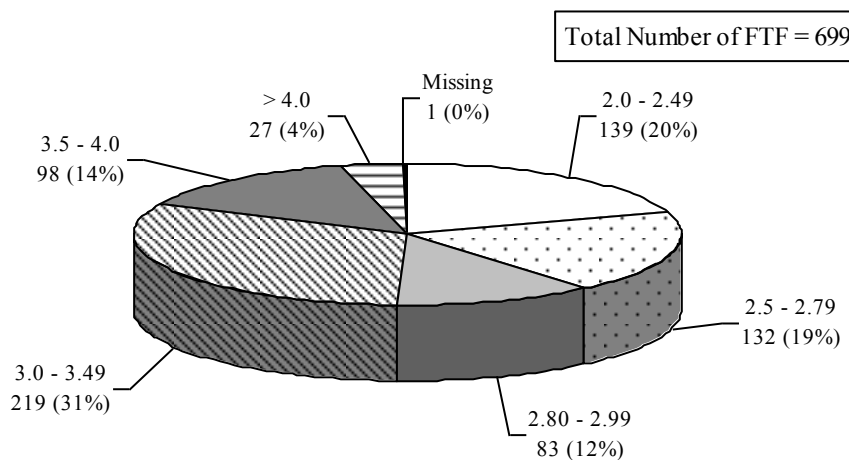
Total 1013.3

Source: IR Official DHE Fall Files

## Degree Seeking, First-time Freshmen by Age, Fall 2007



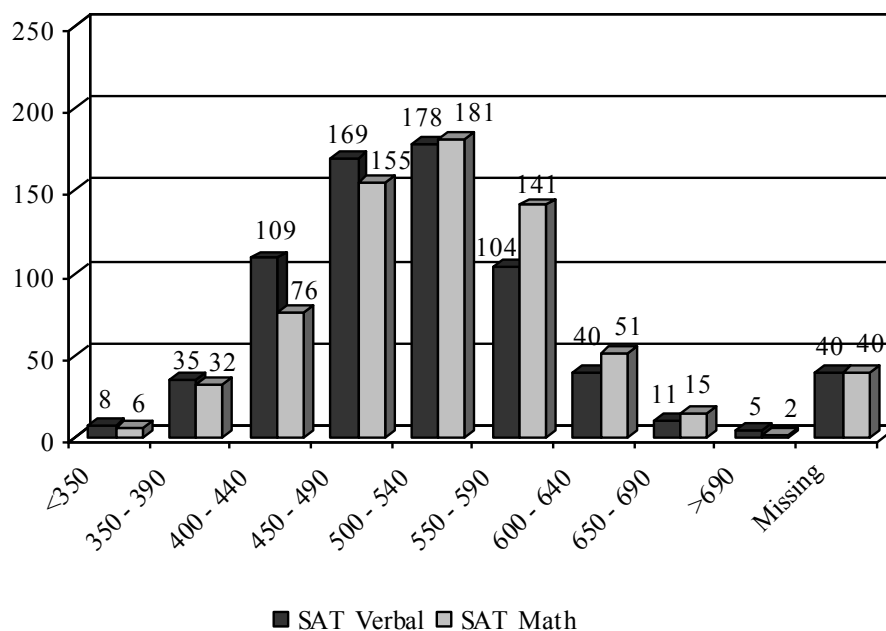
## Degree Seeking, First-time Freshmen High School GPA, Fall 2007



Source: IR Official DHE Fall Files

## Degree Seeking, First-time Freshmen SAT Scores, Fall 2007

Score Range	SAT Verbal			SAT Math		
	Male	Female	Total	Male	Female	Total
<350	2	6	8	2	4	6
350 - 390	14	21	35	7	25	32
400 - 440	42	67	109	24	52	76
450 - 490	70	99	169	47	108	155
500 - 540	74	104	178	80	101	181
550 - 590	48	56	104	72	69	141
600 - 640	13	27	40	25	26	51
650 - 690	8	3	11	12	3	15
>690	0	5	5	2	0	2
Missing	17	23	40	17	23	40
<b>Total</b>	<b>288</b>	<b>411</b>	<b>699</b>	<b>288</b>	<b>411</b>	<b>699</b>



## Average Combined SAT Score, Fall 2007

Male 1031.3

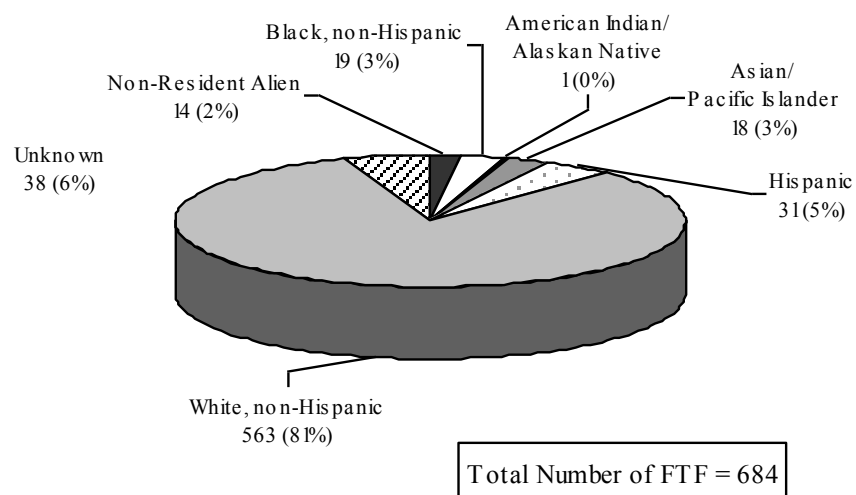
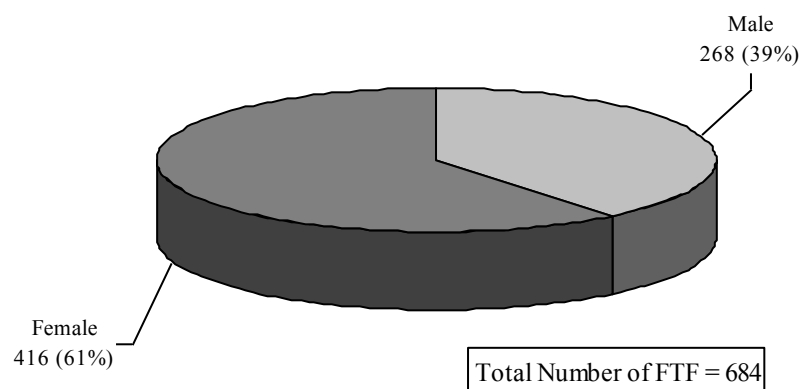
Female

994.3

Total 1009.5

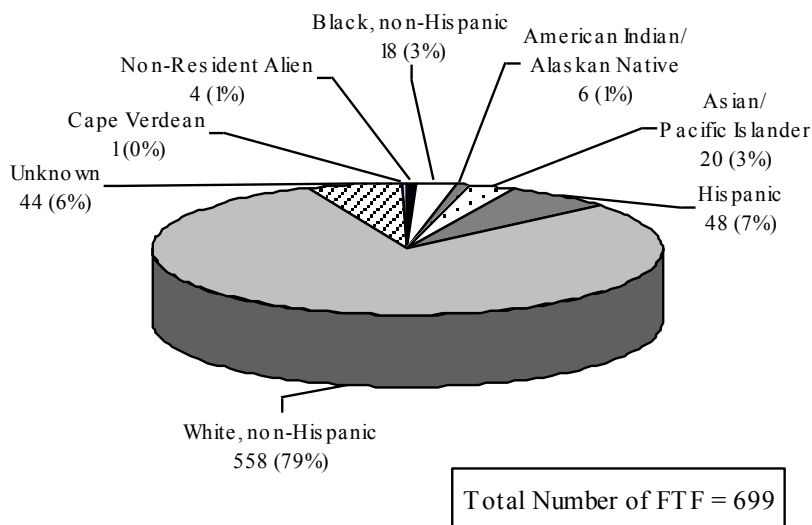
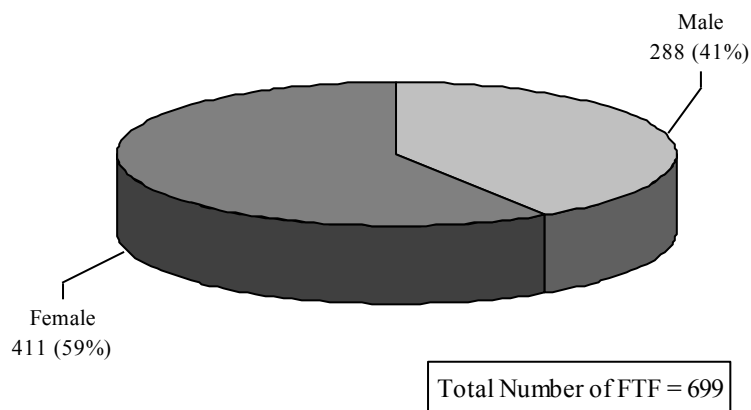
Source: IR Official DHE Fall Files

## Degree Seeking, First-time Freshmen, Fall 2006



Source: IR Official DHE Fall Files

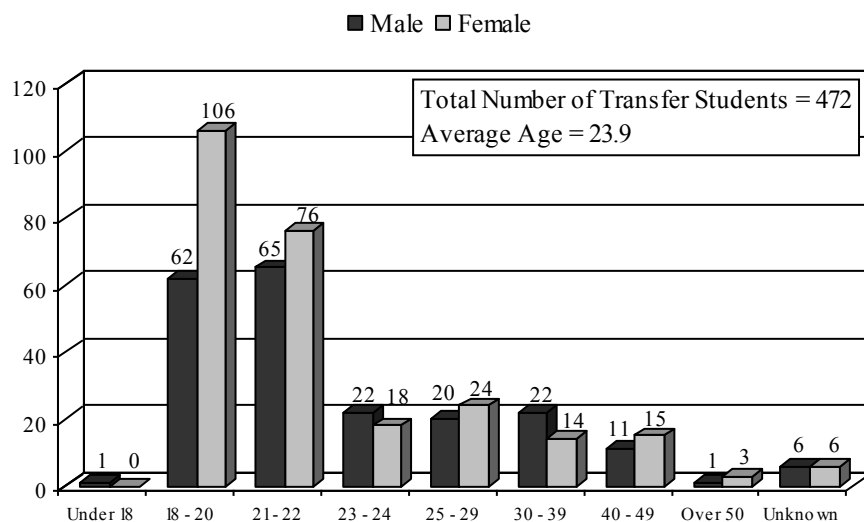
## Degree Seeking, First-time Freshmen, Fall 2007



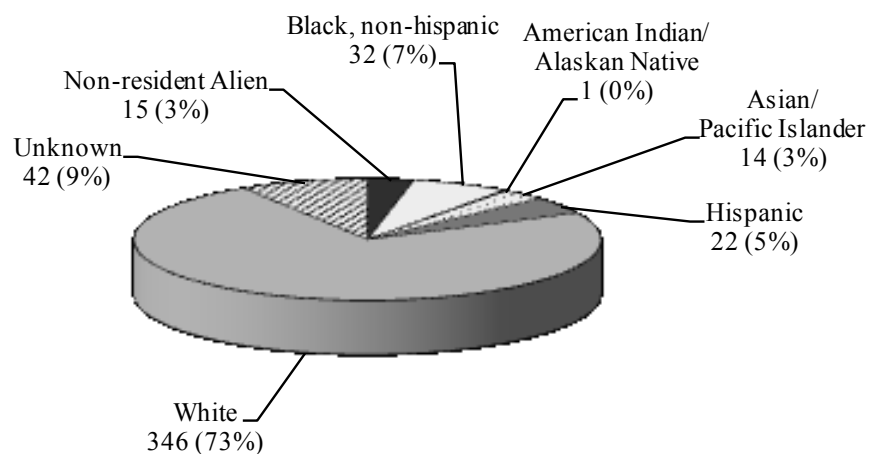
Source: IR Official DHE Fall Files



## New Degree Seeking Transfer Students by Age, Fall 2006



## New Degree Seeking Transfer Students by Race, Fall 2006



Source: IR Official DHE Fall Files

## Transfer Institutions, Fall 2006

<i>Institution*</i>	<i># of Students</i>
Quinsigamond Community College	140
Foreign College	22
University of Massachusetts (Amherst)	22
Mount Wachusett Community College	21
Becker Junior College	12
Framingham State College	12
MassBay Community College	11
Westfield State College	11
<b>Total</b>	<b>251</b>

**\* Institutions contributing approximately 1/2 the transfer students**

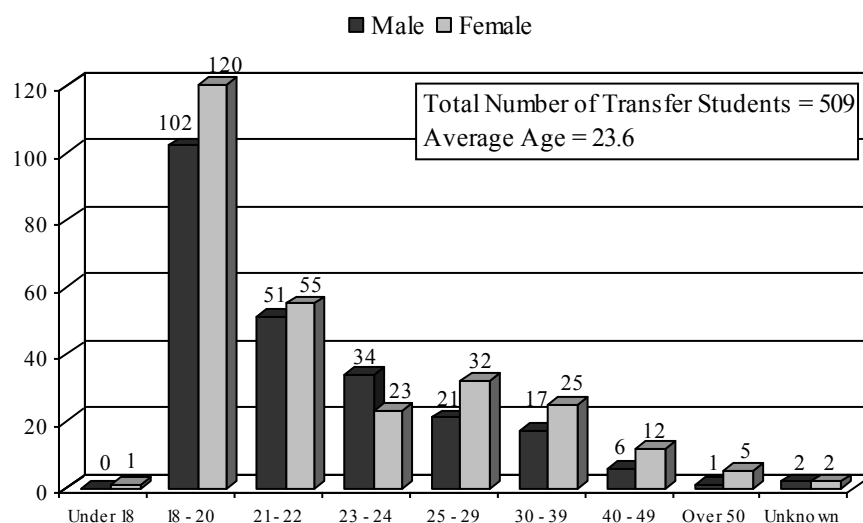
Source: IR Official DHE Fall Files

## New Degree Seeking Transfer Students by Major, Fall 2006

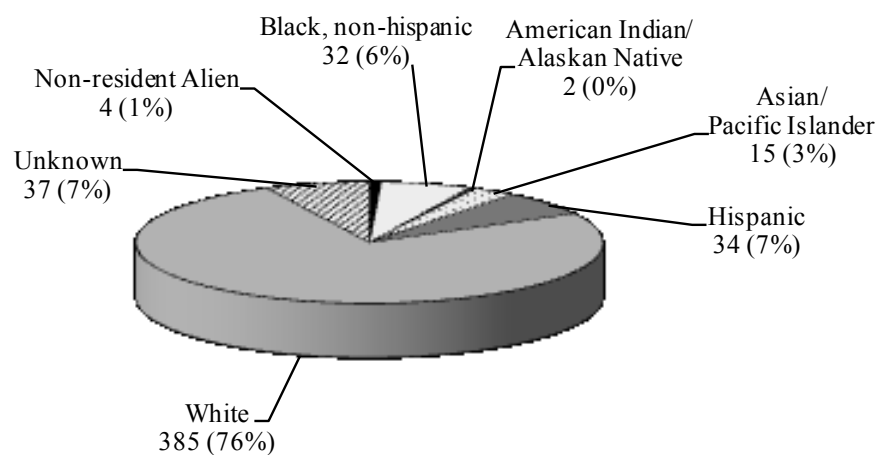
<i>Major</i>	<i>Male</i>	<i>Female</i>	<i>Total</i>
Biology	10	19	29
Biotechnology	5	5	10
Business Admin	53	48	101
Chemistry	7	8	15
Communications	19	8	27
Communication Science & Disorders	2	6	8
Community Health	2	5	7
Computer Science	12	1	13
Criminal Justice	31	19	50
Early Childhood Ed	0	16	16
Economics	1	3	4
Elementary Education	1	9	10
English	6	10	16
Geography	3	0	3
Health Education	1	1	2
Health Studies	3	4	7
History	12	9	21
Mathematics	2	1	3
Natural Science	6	5	11
Nursing (Track 1)	1	5	6
Occupational Studies	0	4	4
Psychology	14	48	62
Sociology	2	2	4
Spanish	1	3	4
Urban Studies	1	2	3
Undeclared	15	21	36
<b>Total</b>	<b>210</b>	<b>262</b>	<b>472</b>

Source: IR Official DHE Fall Files

## New Degree Seeking Transfer Students by Age, Fall 2007



## New Degree Seeking Transfer Students by Race, Fall 2007



Source: IR Official DHE Fall Files

## Transfer Institutions, Fall 2007

<i>Institution*</i>	<i># of Students</i>
Quinsigamond Community College	143
Mount Wachusett Community College	29
University of Massachusetts (Amherst)	25
MassBay Community College	14
University of Massachusetts (Dartmouth)	12
Foreign College	11
Bridgewater State College	10
Framingham State College	10
Westfield State College	10
Fitchburg State College	9
<b>Total</b>	<b>273</b>

**\* Institutions contributing approximately 1/2 the transfer students**

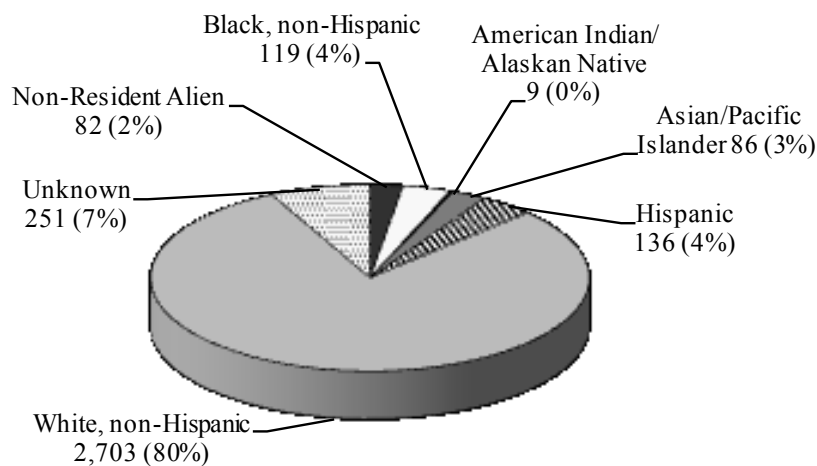
Source: IR Official DHE Fall Files

## New Degree Seeking Transfer Students by Major, Fall 2007

<i>Major</i>	<i>Male</i>	<i>Female</i>	<i>Total</i>
Biology	12	25	37
Business Admin	67	40	107
Biotechnology	3	4	7
Chemistry	10	9	19
Community Health	2	2	4
Communications	9	3	12
Communication Science & Disorders	1	17	18
Criminal Justice	38	18	56
Computer Science	14	0	14
Early Childhood Ed	0	10	10
Early Childhood Ed (non-licensure)	0	1	1
Economics	2	1	3
Elementary Education	4	15	19
English	7	11	18
Geography	2	1	3
Health Education	3	2	5
Health Studies	2	5	7
History	12	7	19
Mathematics	6	5	11
Natural Science	8	7	15
Nursing (Track 1)	2	9	11
Occupational Studies	0	2	2
Psychology	13	38	51
Sociology	2	7	9
Spanish	0	1	1
Undeclared	13	30	43
Urban Studies	2	5	7
<b>Total</b>	<b>234</b>	<b>275</b>	<b>509</b>

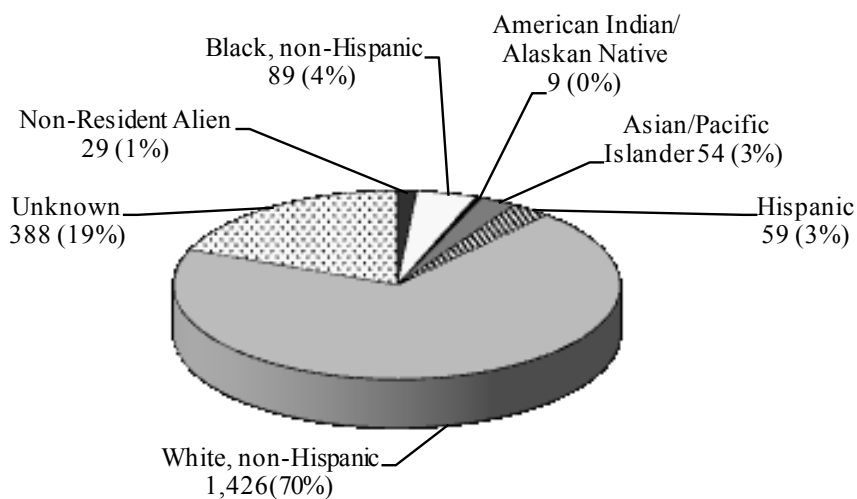
Source: IR Official DHE Fall Files

## Total Full-time Students, Fall 2006



Total Number of Full-time Students = 3,386

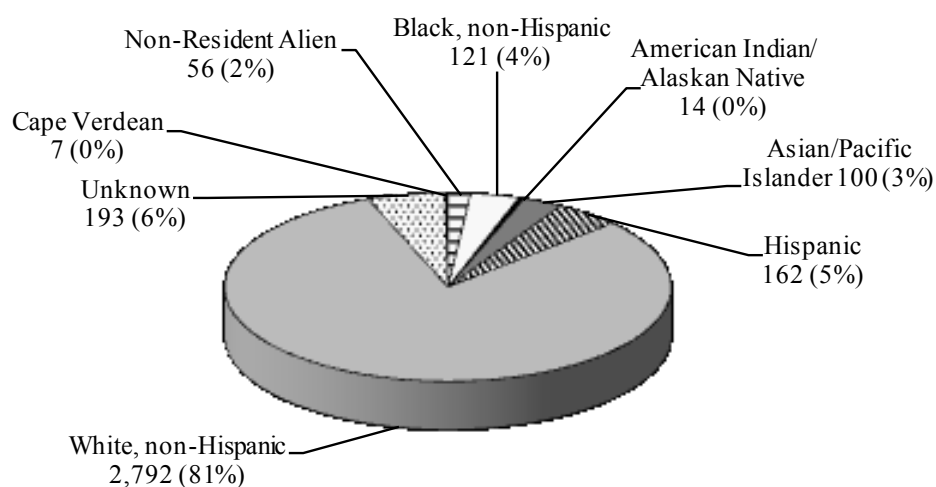
## Total Part-time Students, Fall 2006



Total Number of Part-time Students = 2,054

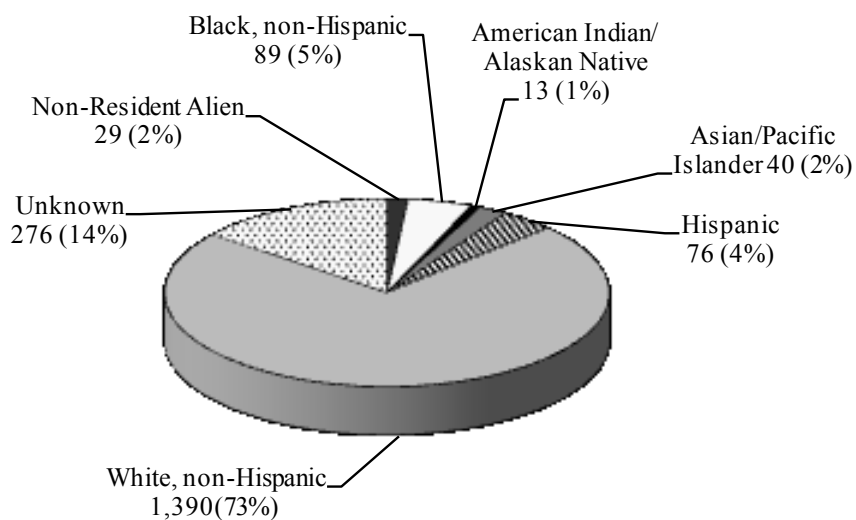
Source: IR Official DHE Fall Files

## Total Full-time Students, Fall 2007



Total Number of Full-time Students = 3,445

## Total Part-time Students, Fall 2007

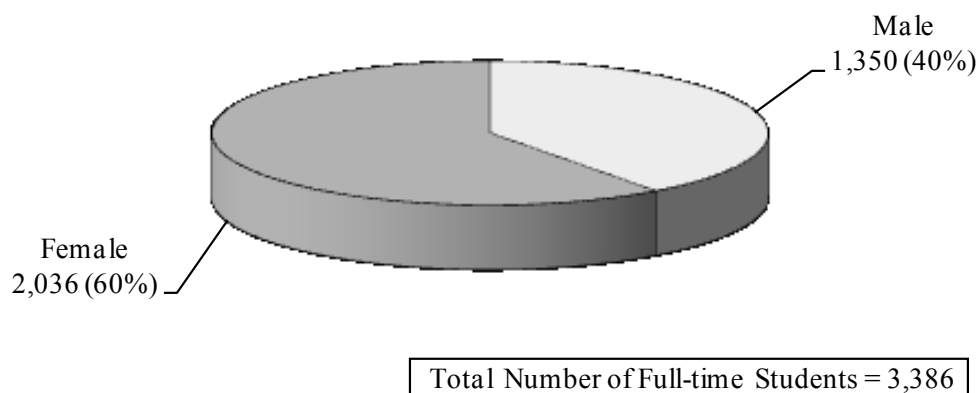


Total Number of Part-time Students = 1,913

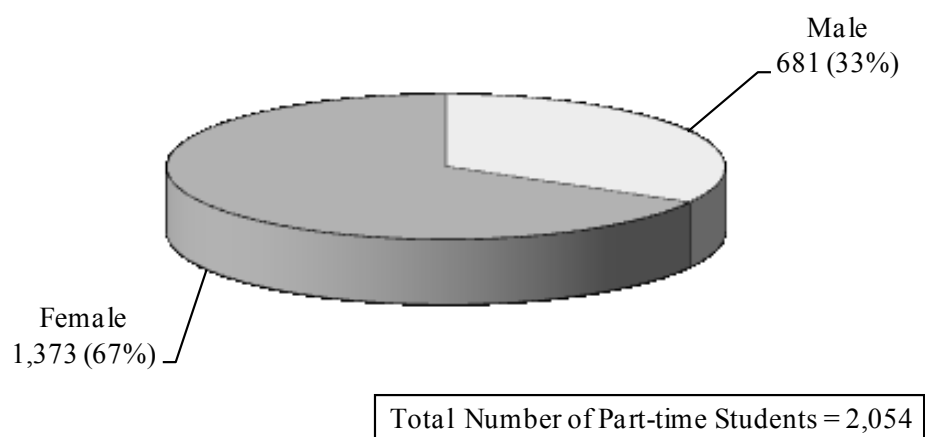
Source: IR Official DHE Fall Files



## Total Enrollment by Gender (Full-time), Fall 2006

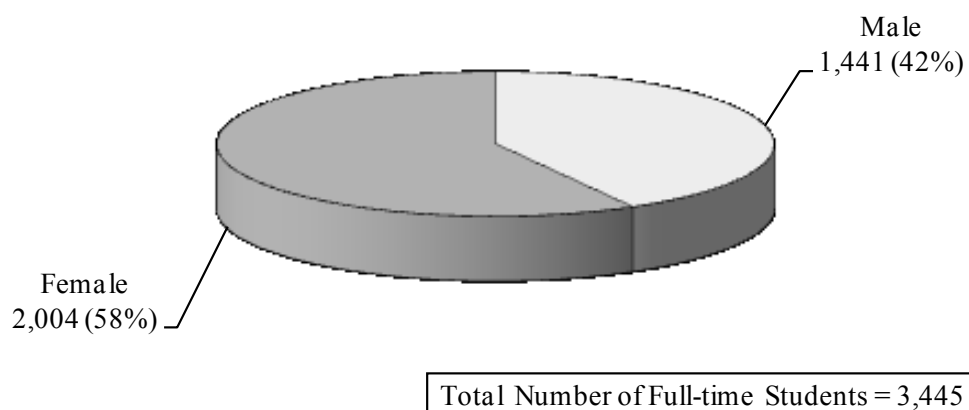


## Total Enrollment by Gender (Part-time), Fall 2006

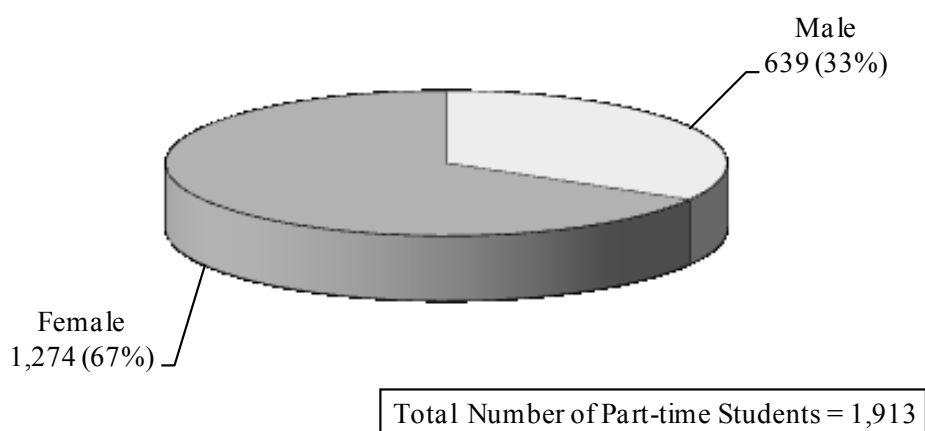


Source: IR Official DHE Fall Files

### Total Enrollment by Gender (Full-time), Fall 2007

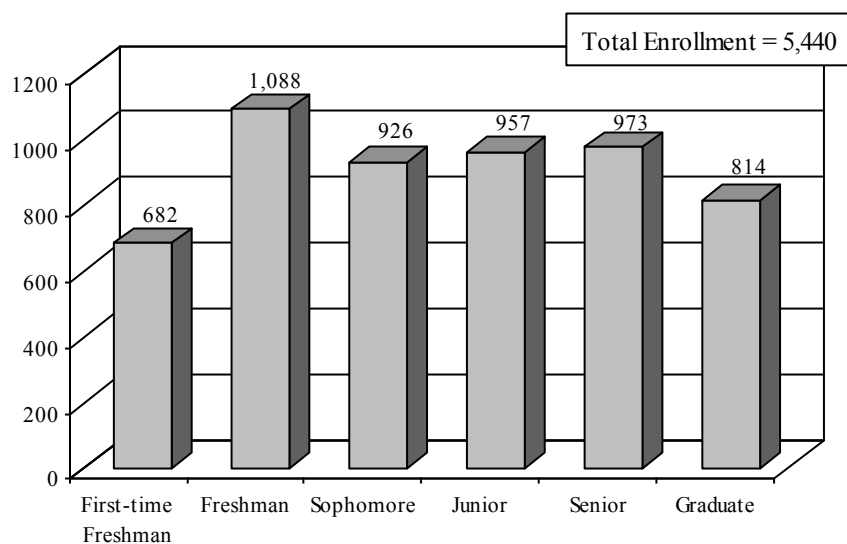


### Total Enrollment by Gender (Part-time), Fall 2007

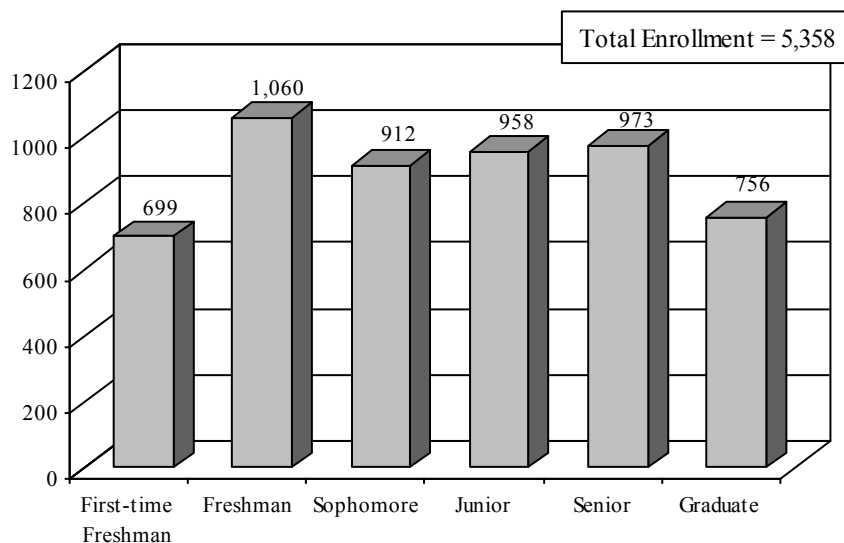


Source: IR Official DHE Fall Files

## Total Enrollment by Class, Fall 2006



## Total Enrollment by Class, Fall 2007



Source: IR Official DHE Fall Files

## On-Campus Housing by State of Residence and Class, Fall 2006

<i>Class</i>	<i>Residence</i>	<i>Total</i>	<i>Class</i>	<i>Residence</i>	<i>Total</i>
First-time Freshman	Non-resident Alien	11	Junior	Non-resident Alien	3
	Connecticut	3		Connecticut	4
	Massachusetts	374		Massachusetts	159
	New Hampshire	5		Maine	1
	New Jersey	1		Nebraska	1
	New York	3		New Hampshire	1
	<b>Total</b>	<b>397</b>		New York	1
Freshman	Non-resident Alien	6		Rhode Island	6
	Connecticut	2		<b>Total</b>	<b>176</b>
	Massachusetts	127	Senior	Connecticut	2
	New Hampshire	2		Florida	1
	<b>Total</b>	<b>137</b>		Massachusetts	65
Sophomore	Connecticut	4		New Hampshire	2
	Florida	1		New Jersey	1
	Massachusetts	219		Vermont	1
	New Hampshire	4		<b>Total</b>	<b>72</b>
	New York	1		<b>Grand Total</b>	<b>1,017</b>
	Pennsylvania	1			
	Rhode Island	4			
	Vermont	1			
	<b>Total</b>	<b>235</b>			

Source: IR Official DHE Fall Files

## On-Campus Housing by State of Residence and Class, Fall 2007

<i>Class</i>	<i>Residence</i>	<i>Total</i>	<i>Class</i>	<i>Residence</i>	<i>Total</i>
First-time Freshman	Connecticut	6	Junior	Connecticut	2
	Massachusetts	344		Florida	1
	Maine	1		Massachusetts	145
	New Hampshire	8		New Hampshire	1
	New Jersey	1		New York	1
	New York	1		Rhode Island	3
	PA	1	<b>Total</b>		<b>153</b>
	Rhode Island	2	Senior	Non-resident Alien	2
<b>Total</b>		<b>364</b>		Massachusetts	85
Freshman	Non-resident Alien	2		Nebraska	1
	Connecticut	1		New York	1
	Massachusetts	142		Rhode Island	2
	New Hampshire	5		Vermont	1
	New Jersey	1	<b>Total</b>		<b>92</b>
	New York	1	<b>Grand Total</b>		<b>1,017</b>
	Pennsylvania	1			
	Rhode Island	3			
<b>Total</b>		<b>156</b>			
Sophomore	Non-resident Alien	2			
	Arizona	1			
	Connecticut	4			
	Massachusetts	241			
	Maine	1			
	Minnesota	1			
	New Hampshire	1			
	New York	1			
<b>Total</b>		<b>252</b>			

Source: IR Official DHE Fall Files

## Instructional Programs

---



Fact Book 2006 & 2007

---

## Instructional Programs

### Enrolled Majors by Student Classification, Fall 2006

<i>Major*</i>	<i>Student Classification</i>		<i>Total</i>
	<i>Undergraduate</i>	<i>Graduate</i>	
Biology	195	N/A	<b>195</b>
Biotechnology	66	28	<b>94</b>
Business Administration	790	N/A	<b>790</b>
Chemistry	85	N/A	<b>85</b>
Communication	285	N/A	<b>285</b>
Communication Sciences & Disorders	95	N/A	<b>95</b>
Community Health	35	N/A	<b>35</b>
Community Health Nursing	N/A	11	<b>11</b>
Computer Science	102	N/A	<b>102</b>
Criminal Justice	187	N/A	<b>187</b>
Early Childhood Education	95	12	<b>107</b>
Early Childhood Ed (Non-Licensure)	3	N/A	<b>3</b>
Economics	26	N/A	<b>26</b>
Education	N/A	30	<b>30</b>
<i>(Concentration )</i>			
English	N/A	5	<b>5</b>
Health Education	N/A	7	<b>7</b>
History	N/A	12	<b>12</b>
Spanish	N/A	6	<b>6</b>
Elementary Education	146	32	<b>178</b>
English	126	N/A	<b>126</b>
Geography	23	N/A	<b>23</b>
Health Care Administration	N/A	13	<b>13</b>
Health Education	67	N/A	<b>67</b>
Health Studies	35	N/A	<b>35</b>
History	172	N/A	<b>172</b>
Management	N/A	15	<b>15</b>
Mathematics	62	N/A	<b>62</b>
Middle School Education	N/A	11	<b>11</b>
Moderate Special Needs	N/A	7	<b>7</b>
Natural Science	44	1	<b>45</b>
Non-profit Management	N/A	16	<b>16</b>
Nursing (Track 1)	239	N/A	<b>239</b>
Nursing (Track 2)	17	N/A	<b>17</b>
Occupational Studies	79	N/A	<b>79</b>
Occupational Therapy	3	24	<b>27</b>
Psychology	456	N/A	<b>456</b>
Reading	N/A	15	<b>15</b>
School Leadership and Administration	N/A	26	<b>26</b>
School Psychology	N/A	15	<b>15</b>
Secondary Education	N/A	111	<b>111</b>
Sociology	43	N/A	<b>43</b>
Spanish	21	N/A	<b>21</b>
Speech-Language Pathology	N/A	85	<b>85</b>
Urban Studies	55	N/A	<b>55</b>
Undeclared	406	7	<b>413</b>
Non-degree	668	355	<b>1,023</b>
<b>Total</b>	<b>4,626</b>	<b>814</b>	<b>5,440</b>

\* Includes 1st Major only

Source: IR Official DHE Fall Files

## Enrolled Majors by Student Classification, Fall 2007

<i>Major*</i>	<i>Student Classification</i>		<i>Total</i>
	<i>Undergraduate</i>	<i>Graduate</i>	
Biology	196	N/A	<b>196</b>
Biotechnology	56	21	<b>77</b>
Business Administration	824	N/A	<b>824</b>
Chemistry	91	N/A	<b>91</b>
Communication	258	N/A	<b>258</b>
Communication Sciences & Disorders	107	N/A	<b>107</b>
Community Health	38	N/A	<b>38</b>
Community Health Nursing	N/A	8	<b>8</b>
Computer Science	99	N/A	<b>99</b>
Criminal Justice	293	N/A	<b>293</b>
Early Childhood Education	97	17	<b>114</b>
Early Childhood Ed (Non-Licensure)	13	N/A	<b>13</b>
Economics	29	N/A	<b>29</b>
Education	N/A	44	<b>44</b>
<i>(Concentration )</i>			
English	N/A	8	<b>8</b>
Health Education	N/A	11	<b>11</b>
History	N/A	16	<b>16</b>
Spanish	N/A	9	<b>9</b>
Elementary Education	140	23	<b>163</b>
English	113	N/A	<b>113</b>
Geography	23	N/A	<b>23</b>
Health Care Administration	N/A	20	<b>20</b>
Health Education	60	N/A	<b>60</b>
Health Studies	35	N/A	<b>35</b>
History	179	N/A	<b>179</b>
Management	N/A	24	<b>24</b>
Mathematics	69	N/A	<b>69</b>
Middle School Education	N/A	17	<b>17</b>
Moderate Special Needs	N/A	10	<b>10</b>
Natural Science	56	N/A	<b>56</b>
Non-profit Management	N/A	21	<b>21</b>
Nursing (Track 1)	231	N/A	<b>231</b>
Nursing (Track 2)	19	N/A	<b>19</b>
Occupational Studies	83	N/A	<b>83</b>
Occupational Therapy	0	21	<b>21</b>
Psychology	440	N/A	<b>440</b>
Reading	N/A	11	<b>11</b>
School Leadership and Administration	N/A	15	<b>15</b>
School Psychology	N/A	19	<b>19</b>
Secondary Education	N/A	117	<b>117</b>
Sociology	50	N/A	<b>50</b>
Spanish	23	N/A	<b>23</b>
Speech-Language Pathology	N/A	86	<b>86</b>
Urban Studies	44	N/A	<b>44</b>
Undeclared	354	4	<b>358</b>
Non-degree	582	278	<b>860</b>
<b>Total</b>	<b>4,602</b>	<b>756</b>	<b>5,358</b>

\* Includes 1st Major only

Source: IR Official DHE Fall Files



## Academic Achievements/Learning Outcomes

---

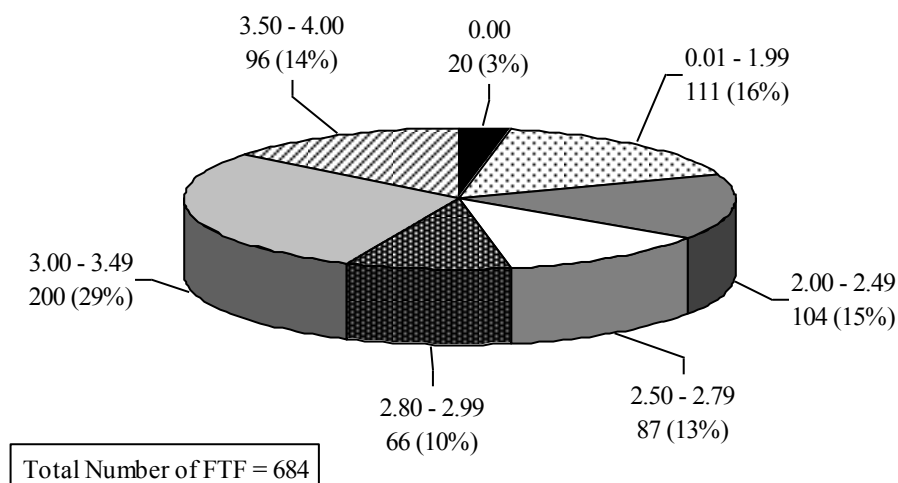


Fact Book 2006 & 2007

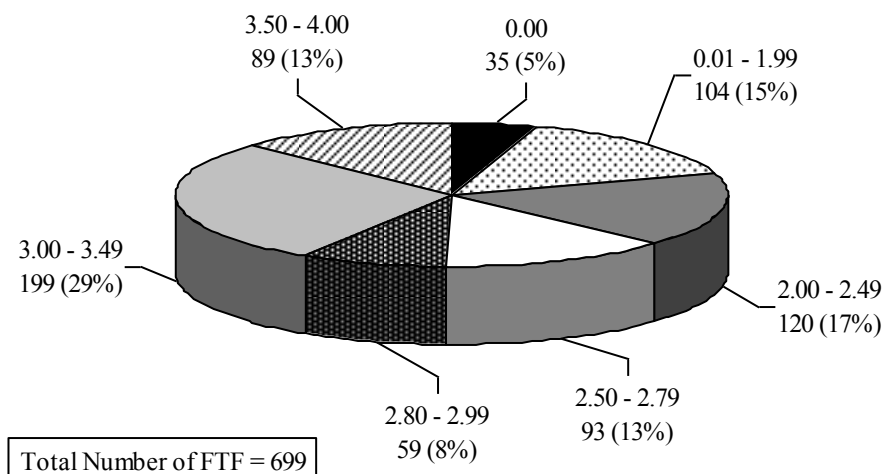
---

## Academic Achievement/Learning Outcomes

### Grade Distribution of First-time Freshmen, Fall 2006



### Grade Distribution of First-time Freshmen, Fall 2007



Source: IR Official DHE Fall Files

## Retention and Graduation Rates

Entering Class	Initial Cohort	After 1st Year		After 2nd Year		After 3rd Year		After 4th Year		After 5th Year		After 6th Year	
		N	%	N	%	N	%	N	%	N	%	N	%
2001	564												
Continued		416	73.9 <sup>1</sup>	318	56.5	300	53.4 <sup>2</sup>	168	29.9	53	9.4	19	3.4
Dropout (cumulative)			26.1		43.5		46.1		49.1		52.5		52.5
Graduated (cumulative)						3	0.5	118	21.0	214	38.1	248	44.1
2002	508												
Continued		368	72.4	304	59.8	275	54.1	132	26.0	39	7.7	19	3.7
Dropout (cumulative)			27.6		40.2		44.9		49.2		50.0		48.8
Graduated (cumulative)						5	1.0	126	24.8	215	42.3	241	47.4
2003	623												
Continued		446	71.7 <sup>3</sup>	366	58.8	323	51.9	153	24.6	39	6.3		
Dropout (cumulative)			28.3		41.2		47.4		51.6		53.9		
Graduated (cumulative)						4	0.6	148	23.8	248	39.9		
2004	626												
Continued		475	75.9	373	59.6	345	55.2 <sup>4</sup>	168	26.9				
Dropout (cumulative)			24.1		40.4		43.6		49.0				
Graduated (cumulative)						7	1.1	151	24.2				
2005	641												
Continued		476	74.4 <sup>5</sup>	380	59.5 <sup>6</sup>	346	54.1						
Dropout (cumulative)			25.6		40.5		45.4						
Graduated (cumulative)						3	0.5						
2006	668												
Continued		514	76.9	430	64.4								
Dropout (cumulative)			23.1		35.6								
Graduated (cumulative)													
2007	678												
Continued		513	75.7										
Dropout (cumulative)			24.3										
Graduated (cumulative)													

Adjusted cohorts due to deceased students: <sup>1</sup>563, <sup>2</sup>562, <sup>3</sup>622, <sup>4</sup>625, <sup>5</sup>640, <sup>6</sup>639

Source: WSC Colleague Data System

## Degrees Conferred, 2006

<i>Major</i>	<i>Bachelor</i>	<i>Post-Bacc. Certificate</i>	<i>Master</i>
Adult Health Nurse/Nursing	6		
Bioinformatics	1		
Biological and Physical Sciences	17		
Biology Teacher Education		4	
Biology/Biological Sciences, General	27		
Biotechnology	11		9
Business Administration and Management, General	171		
Chemistry Teacher Education		2	
Chemistry, General	13		
Communication Disorders, General	13		
Communication Studies/Speech Communication and Rhetoric	30		
Community Health Services/Liaison/Counseling	12		
Community Organization and Advocacy			21
Computer And Information Sciences, General	22		
Criminal Justice/Safety Studies	35		
Economics, General	9		
Education, General		14	79
Elementary Education and Teaching	18	30	
English Language and Literature, General	38		
English/Language Arts Teacher Education		17	
Foreign Language Teacher Education		3	
Geography	4		
Health Professions and Related Clinical Sciences, Other	17		
Health Services/Allied Health/Health Sciences, General		2	
Health/Health Care Administration/Management			9
History Teacher Education		1	
History, General	43		
Kindergarten/Preschool Education and Teaching	18	17	
Mass Communication/Media Studies	19		
Mathematics Teacher Education		10	
Mathematics, General	10		
Nursing- Registered Nurse Training (RN, ASN, BSN, MSN)	48		
Occupational Therapy/Therapist	12		18
Political Science and Government, General		2	
Psychology, General	100		
Radio And Television Broadcasting Technology/Technician	4		
Science Teacher Education/General Science Teacher Education		2	
Social Studies Teacher Education		8	
Sociology	6		
Spanish Language And Literature	7		
Special Education and Teaching, Other		34	
Speech-Language Pathology/Pathologist			34
Teacher Education, Multiple Levels		2	1
Urban Studies/Affairs	18		
<b>Total</b>	<b>729</b>	<b>148</b>	<b>171</b>

Source: IR Official DHE Degrees Conferred Files

## Degrees Conferred, 2007

<i>Major</i>	<i>Bachelor</i>	<i>Post-Bacc. Certificate</i>	<i>Master</i>
Adult Health Nurse/Nursing	8		
Biological and Physical Sciences	19		
Biology Teacher Education		4	
Biology/Biological Sciences, General	36		
Biotechnology	9		12
Business Administration and Management, General	165		
Chemistry Teacher Education		2	
Chemistry, General	12		
Communication Disorders, General	14		
Communication Studies/Speech Communication and Rhetoric	53		
Community Health Services/Liaison/Counseling	5		
Community Organization and Advocacy			6
Computer And Information Sciences, General	20		
Criminal Justice/Safety Studies	27		
Economics, General	7		
Education, General		19	70
Elementary and Middle School Administration/Principalship		1	
Elementary Education and Teaching	31	42	
English Language and Literature, General	29		
English/Language Arts Teacher Education		13	
Foreign Language Teacher Education		5	
Geography	6		
Health Professions and Related Clinical Sciences, Other	27		
Health Services/Allied Health/Health Sciences, General		3	
Health/Health Care Administration/Management			20
History Teacher Education		6	
History, General	33		
Kindergarten/Preschool Education and Teaching	17	12	
Mass Communication/Media Studies	13		
Mathematics Teacher Education		14	
Mathematics, General	9		
Nursing- Registered Nurse Training (RN, ASN, BSN, MSN)	37		
Occupational Therapy/Therapist	11		11
Physical Sciences	1		
Psychology, General	114		
Radio And Television Broadcasting Technology/Technician	2		
Science Teacher Education/General Science Teacher Education		2	
Social Studies Teacher Education		10	
Sociology	12		
Spanish Language And Literature	8		
Special Education and Teaching, Other		25	
Speech-Language Pathology/Pathologist			25
Teacher Education, Multiple Levels		17	
Urban Studies/Affairs	33		
<b>Total</b>	<b>758</b>	<b>175</b>	<b>144</b>

Source: IR Official DHE Degrees Conferred Files

## Personnel Profile

---



Fact Book 2006 & 2007

---

## Personnel Profile

### Employees/Staff, Fall 2006

Race/Ethnicity	Total								Male	Female
	Nonresident		American Indian/		Asian/Pacific		Unknown			
	Alien	Black	Alaskan Native	Islanders	Hispanic	White				
Executive or Management	0	4	0	1	3	52	1	26	35	
Professionals	0	2	0	3	9	62	0	31	45	
Tech. Professionals	0	1	0	0	2	16	1	5	15	
Clerical or Secretarial	0	4	0	1	3	61	0	7	62	
Skilled Crafts	0	0	0	0	1	10	0	11	0	
Service Maintenance	0	1	1	0	11	41	0	45	9	
Total	0	12	1	5	29	242	2	125	166	

Race/Ethnicity	Full-Time							Male	Female
	Nonresident		American Indian/	Asian/Pacific		White	Unknown		
	Alien	Black	Alaskan Native	Islanders	Hispanic				
Executive or Management	0	4	0	1	3	51	1	26	34
Professionals	0	2	0	3	9	54	0	27	41
Tech. Professionals	0	1	0	0	1	15	0	4	13
Clerical or Secretarial	0	4	0	1	3	56	0	7	57
Skilled Crafts	0	0	0	0	1	10	0	11	0
Service Maintenance	0	1	1	0	11	39	0	44	8
Total	0	12	1	5	28	225	1	119	153

Race/Ethnicity	Part-Time							Male	Female
	Nonresident		American Indian/	Asian/Pacific					
	Alien	Black	Alaskan Native	Islanders	Hispanic	White	Unknown		
Executive or Management	0	0	0	0	0	1	0	0	1
Professionals	0	0	0	0	0	8	0	4	4
Tech. Professionals	0	0	0	0	1	1	1	1	2
Clerical or Secretarial	0	0	0	0	0	5	0	0	5
Skilled Crafts	0	0	0	0	0	0	0	0	0
Service Maintenance	0	0	0	0	0	2	0	1	1
Total	0	0	0	0	1	17	1	6	13

Source: IR Official IPEDS HR Files

## Employees/Staff, Fall 2007

Race/Ethnicity	Total							Male	Female
	Nonresident		American Indian/	Asian/Pacific					
	Alien	Black	Alaskan Native	Islanders	Hispanic	White	Unknown		
Executive or Management	0	2	0	1	2	52	1	26	32
Professionals	0	3	0	2	7	71	0	29	54
Tech. Professionals	0	1	0	0	3	14	1	6	13
Clerical or Secretarial	0	5	0	1	2	66	0	6	68
Skilled Crafts	0	0	0	0	1	10	0	11	0
Service Maintenance	0	1	0	0	11	42	0	44	10
Total	0	12	0	4	26	255	2	122	177

Race/Ethnicity	Full-Time								Male	Female	
	Nonresident		American Indian/ Alaskan Native		Asian/Pacific Islanders		Hispanic	White			Unknown
	Alien	Black									
Executive or Management	0	2	0	1	2	51	1	26	31		
Professionals	0	3	0	2	7	63	0	25	50		
Tech. Professionals	0	1	0	0	2	13	0	5	11		
Clerical or Secretarial	0	5	0	1	2	61	0	6	63		
Skilled Crafts	0	0	0	0	1	10	0	11	0		
Service Maintenance	0	1	0	0	11	41	0	43	10		
Total	0	12	0	4	25	239	1	116	165		

Race/Ethnicity	Part-Time							Male	Female
	Nonresident		American Indian/		Asian/Pacific				
	Alien	Black	Alaskan Native	Islanders	Hispanic	White	Unknown		
Executive or Management	0	0	0	0	0	1	0	0	1
Professionals	0	0	0	0	0	8	0	4	4
Tech. Professionals	0	0	0	0	1	1	1	1	2
Clerical or Secretarial	0	0	0	0	0	5	0	0	5
Skilled Crafts	0	0	0	0	0	0	0	0	0
Service Maintenance	0	0	0	0	0	1	0	1	0
Total	0	0	0	0	1	16	1	6	12

Source: IR Official IPEDS HR Files



## Faculty by Highest Degrees, Fall 2006

<i>Awarding Institution</i>	<i>Graduates</i>	<i>Awarding Institution</i>	<i>Graduates</i>
Boston University	18	Moscow University	1
U/Massachusetts at Amherst	12	New Hampshire College	1
University of Connecticut	9	New Jersey Institute of Technology	1
Worcester State College	9	New School of Social Research	1
Clark University	8	New York University	1
Boston College	5	Nichols College	1
University of California	4	Ohio State University	1
University of Michigan	4	Penn State University	1
Assumption College	3	Purdue University	1
Indiana University	3	Rhode Island School of Design	1
Michigan State University	3	Rice University	1
Nova College	3	San Francisco State University	1
SUNY Albany	3	Simmons College	1
University of New Hampshire	3	Southern Connecticut State University	1
Brandeis University	2	Southern Illinois University	1
Colorado State University	2	St Michael College	1
Columbia U Columbia College	2	SUNY Stony Brook	1
Fitchburg State College	2	Syracuse University	1
Northeastern University	2	Thomas Jefferson University	1
Rutgers University	2	U/Massachusetts at Worcester	1
SUNY Buffalo College	2	U/Massachusetts Medical Center	1
Temple University	2	Univ of Pennsylvania	1
U/Massachusetts at Boston	2	University of Cincinnati	1
University of Georgia	2	University of Colorado	1
University of Minnesota-Minneapolis	2	University of Iowa	1
University of Rhode Island	2	University of Kansas	1
Vanderbilt University	2	University of Liverpool	1
American University	1	University of Louisville	1
Arizona State University	1	University of Miami	1
Bentley College	1	University of Minnesota	1
Brown University	1	University of Mississippi	1
Bryant College	1	University of Missouri	1
Carnegie-Mellon University	1	University of North Carolina	1
City University of NY	1	University of Pretoria	1
Clark Atlanta University	1	University of South Carolina	1
Cornell University	1	University of Texas/Austin	1
Eastman School of Music	1	University of Virginia	1
Florida International University	1	University of Washington	1
Florida State University	1	University of Waterloo	1
Harvard University	1	University of Wisconsin	1
Illinois State University	1	Wesleyan University	1
Mass College of Liberal Arts	1	Worcester Polytechnic Institute	1
McGill University	1	Yale University	1
Moscow Institute of Energy	1		
		<b>Total</b>	<b>173</b>

Source: IR Official DHE HR Files

## Faculty by Highest Degrees, Fall 2007

<i>Awarding Institution</i>	<i>Graduates</i>	<i>Awarding Institution</i>	<i>Graduates</i>
Boston University	18	Florida State University	1
U/Massachusetts at Amherst	11	Golden Gate University	1
Worcester State College	10	Illinois State University	1
University of Connecticut	10	Mass College of Liberal Arts	1
Clark University	9	McGill University	1
Boston College	5	Moscow Institute of Energy	1
University of California	5	Moscow University	1
University of Michigan	5	New Jersey Institute of Technology	1
Assumption College	3	New York University	1
Brandeis University	3	Nichols College	1
Indiana University	3	Ohio State University	1
Nova College	3	Penn State University	1
University of Minnesota-Minneapolis	3	Regis College Library	1
Brown University	2	Rhode Island School of Design	1
Colorado State University	2	Rice University	1
Columbia U Columbia College	2	Rochester Institute of Technology	1
Harvard University	2	Southern Connecticut State University	1
Michigan State University	2	Southern Illinois University	1
North Carolina State Univ	2	St Michael College	1
Northeastern University	2	Syracuse University	1
Purdue University	2	Thomas Jefferson University	1
Rutgers University	2	U/Massachusetts at Worcester	1
SUNY Albany	2	U/Massachusetts Medical Center	1
SUNY Buffalo College	2	University of Cincinnati	1
SUNY Stony Brook	2	University of Colorado	1
Temple University	2	University of Georgia	1
U/Massachusetts at Boston	2	University of Iowa	1
University of New Hampshire	2	University of Kansas	1
University of Rhode Island	2	University of Liverpool	1
Vanderbilt University	2	University of Louisville	1
American University	1	University of Miami	1
Anna Maria College	1	University of Minnesota	1
Arizona State University	1	University of Mississippi	1
Bentley College	1	University of North Carolina	1
Bryant College	1	University of Pennsylvania	1
Carnegie-Mellon University	1	University of Pretoria	1
City College	1	University of South Carolina	1
City University of NY	1	University of Texas/Austin	1
Clark Atlanta University	1	University of Virginia	1
College of William and Mary	1	University of Washington	1
Cornell University	1	University of Waterloo	1
Eastman School of Music	1	University of Wisconsin	1
Emerson College	1	Wesleyan University	1
Fitchburg State College	1	Worcester Polytechnic Institute	1
Florida International University	1	Yale University	1
		<b>Total</b>	<b>182</b>

Source: IR Official DHE HR Files

## Full-time Faculty by Department, Fall 2006

<i>Department</i>	<i>Professor</i>	<i>Associate Professor</i>	<i>Assistant Professor</i>	<i>Instructor</i>	<i>No Academic Rank</i>	<i>Total</i>
Biology	5	1	4	0	0	<b>10</b>
Business and Economics	7	4	5	0	0	<b>16</b>
Chemistry	2	2	3	0	0	<b>7</b>
Communication	0	7	1	0	0	<b>8</b>
Communication Disorders	3	2	1	0	0	<b>6</b>
Computer Science	1	2	1	2	0	<b>6</b>
Criminal Justice	0	0	3	0	0	<b>3</b>
Earth Science	0	5	3	0	0	<b>8</b>
Education	5	4	3	0	0	<b>12</b>
Health Science	0	3	1	0	0	<b>4</b>
History/Political Science	3	6	3	0	0	<b>12</b>
Languages/Literature - English	3	10	4	1	0	<b>18</b>
Library	0	0	0	0	4	<b>4</b>
Mathematics	2	1	4	1	0	<b>8</b>
Nursing	2	1	0	7	0	<b>10</b>
Occupational Therapy	0	3	3	0	0	<b>6</b>
Philosophy	3	2	0	0	0	<b>5</b>
Psychology	3	5	5	0	0	<b>13</b>
Sociology	0	2	1	1	0	<b>4</b>
Urban Studies	3	2	0	0	0	<b>5</b>
Visual & Performing Arts	3	1	4	0	0	<b>8</b>
<b>Total</b>	<b>45</b>	<b>63</b>	<b>49</b>	<b>12</b>	<b>4</b>	<b>173</b>

Source: IR Official DHE HR Files

## Full-time Faculty by Department, Fall 2007

<i>Department</i>	<i>Professor</i>	<i>Associate Professor</i>	<i>Assistant Professor</i>	<i>Instructor</i>	<i>No Academic Rank</i>	<i>Total</i>
Biology	5	1	4	0	0	<b>10</b>
Business and Economics	7	7	4	0	0	<b>18</b>
Chemistry	2	2	3	0	0	<b>7</b>
Communication	2	5	1	0	0	<b>8</b>
Communication Disorders	3	2	2	0	0	<b>7</b>
Computer Science	1	1	2	1	0	<b>5</b>
Criminal Justice	0	0	4	1	0	<b>5</b>
Earth Science	0	5	5	0	0	<b>10</b>
Education	5	7	1	0	0	<b>13</b>
Health Science	0	3	1	0	0	<b>4</b>
History/Political Science	3	6	5	1	0	<b>15</b>
Languages/Literature - English	5	9	4	0	0	<b>18</b>
Mathematics	2	1	4	1	0	<b>8</b>
Nursing	2	1	1	8	0	<b>12</b>
Occupational Therapy	0	6	0	0	0	<b>6</b>
Philosophy	3	1	0	0	0	<b>4</b>
Psychology	3	5	6	0	0	<b>14</b>
Sociology	1	1	2	0	0	<b>4</b>
Urban Studies	3	2	0	0	0	<b>5</b>
Visual & Performing Arts	3	3	3	0	0	<b>9</b>
<b>Total</b>	<b>50</b>	<b>68</b>	<b>52</b>	<b>12</b>	<b>0</b>	<b>182</b>

Source: IR Official DHE HR Files

### Full-time Faculty by Gender and Race, Fall 2006

<i>Race</i>	<i>Male</i>	<i>Female</i>	<i>Total</i>
Nonresident Alien	0	0	0
Black, non-Hispanic	10	1	11
American Indian/Alaskan Native	0	0	0
Asian/Pacific Islander	5	7	12
Hispanic	6	4	10
White, non-Hispanic	67	73	140
Race/ethnicity unknown	0	0	0
<b>Total</b>	<b>88</b>	<b>85</b>	<b>173</b>

### Full-time Faculty by Gender and Race, Fall 2007

<i>Race</i>	<i>Male</i>	<i>Female</i>	<i>Total</i>
Nonresident Alien	0	0	0
Black, non-Hispanic	7	2	9
American Indian/Alaskan Native	0	0	0
Asian/Pacific Islander	4	7	11
Hispanic	5	4	9
White, non-Hispanic	72	80	152
Race/ethnicity unknown	1	0	1
<b>Total</b>	<b>89</b>	<b>93</b>	<b>182</b>

### Full-time Faculty by Gender and Tenure, Fall 2006

<i>Tenure Status</i>	<i>Male</i>	<i>Female</i>	<i>Total</i>
Tenured	49	46	95
Non-tenured	30	36	66
Not on tenure track	9	3	12
<b>Total</b>	<b>88</b>	<b>85</b>	<b>173</b>

### Full-time Faculty by Gender and Tenure, Fall 2007

<i>Tenure Status</i>	<i>Male</i>	<i>Female</i>	<i>Total</i>
Tenured	49	48	97
Non-tenured	32	42	74
Not on tenure track	8	3	11
<b>Total</b>	<b>89</b>	<b>93</b>	<b>182</b>

Source: IR Official IPEDS HR Files

## Full-time Faculty by Gender and Rank, Fall 2006

<i>Rank</i>	<i>Male</i>	<i>Female</i>	<i>Total</i>
Professor	25	20	45
Associate Professor	31	32	63
Assistant Professor	27	22	49
Instructor	5	7	12
No Academic Rank	0	4	4
<b>Total</b>	<b>88</b>	<b>85</b>	<b>173</b>

## Full-time Faculty by Gender and Rank, Fall 2007

<i>Rank</i>	<i>Male</i>	<i>Female</i>	<i>Total</i>
Professor	28	22	50
Associate Professor	29	39	68
Assistant Professor	28	24	52
Instructor	4	8	12
No Academic Rank	0	0	0
<b>Total</b>	<b>89</b>	<b>93</b>	<b>182</b>

## Full-time Faculty by Rank and Age Range, Fall 2006

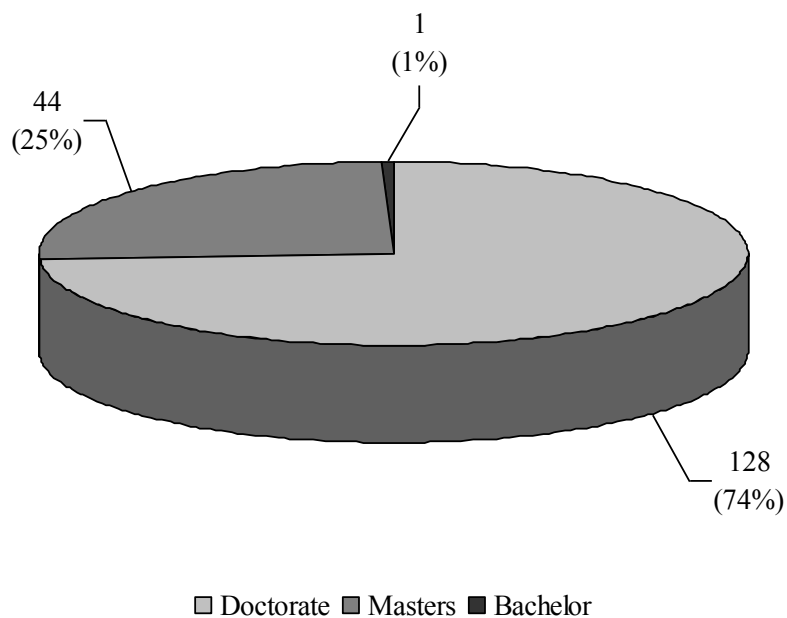
<i>Age Range</i>	<i>Professor</i>	<i>Associate Professor</i>	<i>Assistant Professor</i>	<i>Instructor</i>	<i>No Academic Rank</i>	<i>Total</i>
Under 30	2	0	0	0	0	2
30 - 39	6	11	2	1	1	21
40 - 49	26	15	5	1	3	50
50 - 59	9	18	11	5	0	43
60 - 69	2	16	15	5	0	38
70 and over	0	3	16	0	0	19
<b>Total</b>	<b>45</b>	<b>63</b>	<b>49</b>	<b>12</b>	<b>4</b>	<b>173</b>

## Full-time Faculty by Rank and Age Range, Fall 2007

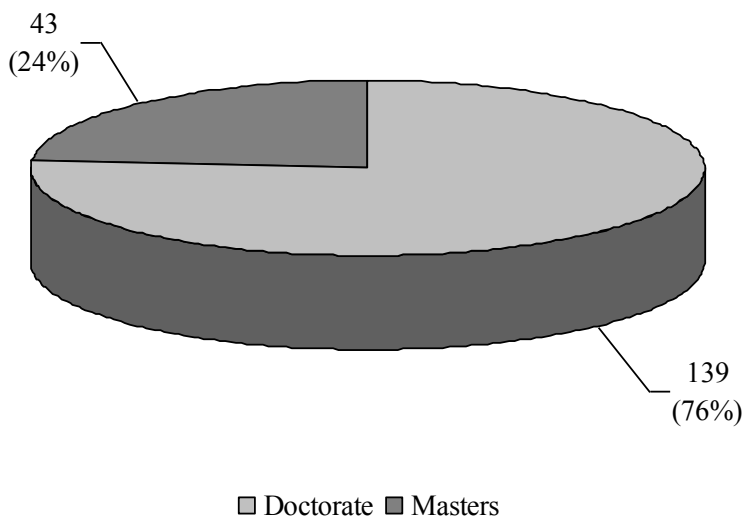
<i>Age Range</i>	<i>Professor</i>	<i>Associate Professor</i>	<i>Assistant Professor</i>	<i>Instructor</i>	<i>No Academic Rank</i>	<i>Total</i>
Under 30	0	0	1	0	0	1
30 - 39	0	6	25	1	0	32
40 - 49	6	15	12	7	0	40
50 - 59	16	24	9	2	0	51
60 - 69	22	17	4	2	0	45
70 and over	6	6	1	0	0	13
<b>Total</b>	<b>50</b>	<b>68</b>	<b>52</b>	<b>12</b>	<b>0</b>	<b>182</b>

Source: IR Official IPEDS HR Files

### Full-time Faculty – Highest Degree Earned, Fall 2006



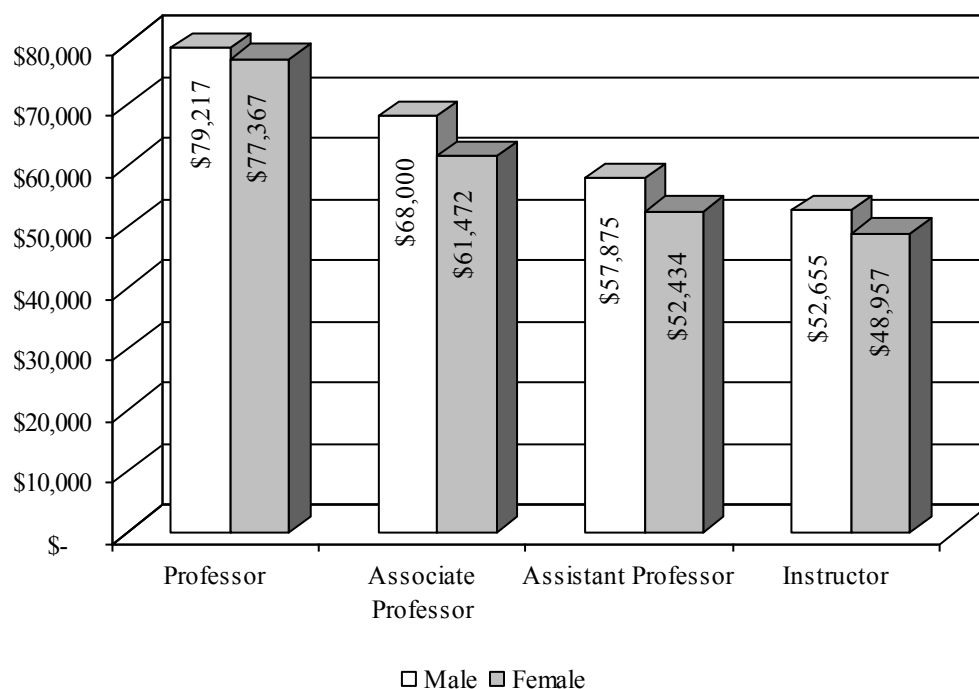
### Full-time Faculty – Highest Degree Earned, Fall 2007



Source: IR Official IPEDS HR Files

## Average Salaries of Full-time Faculty, Fall 2006

<i>Rank</i>	<i>Male</i>	<i>Female</i>	<i>Total</i>
Professor	\$79,217	\$ 77,367	\$78,395
Associate Professor	\$68,000	\$ 61,472	\$64,538
Assistant Professor	\$57,875	\$ 52,434	\$55,628
Instructor	\$52,655	\$ 48,957	\$50,498

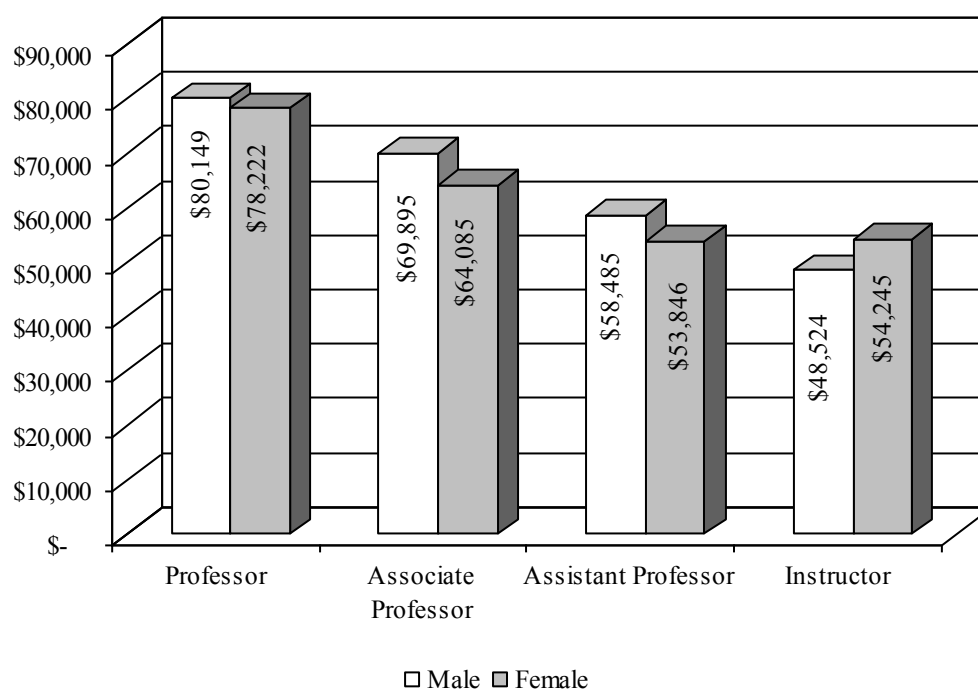


Source: IR Official IPEDS HR Files



## Average Salaries of Full-time Faculty, Fall 2007

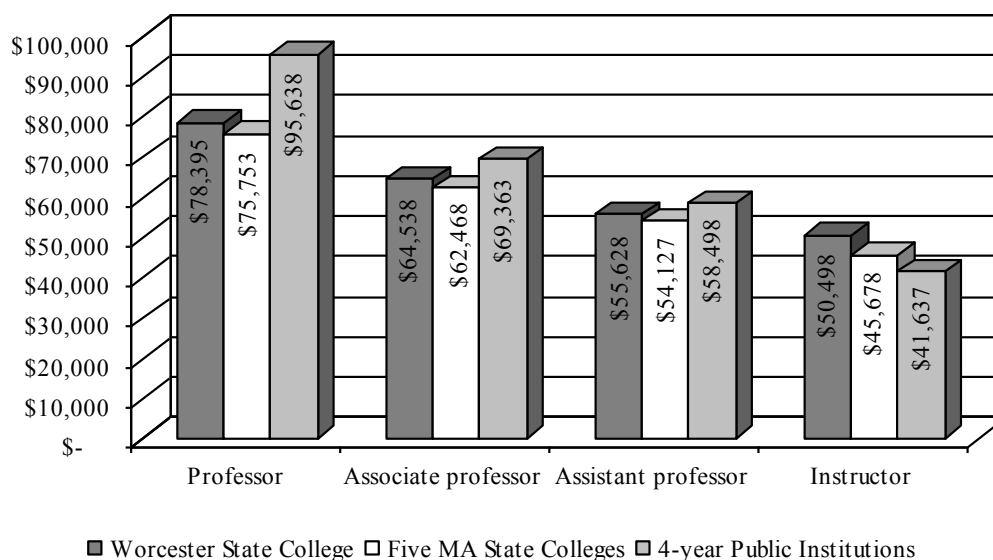
<i>Rank</i>	<i>Male</i>	<i>Female</i>	<i>Total</i>
Professor	\$80,149	\$78,222	\$79,301
Associate Professor	\$69,895	\$64,085	\$66,563
Assistant Professor	\$58,485	\$53,846	\$56,344
Instructor	\$48,524	\$54,245	\$52,338



Source: IR Official IPEDS HR Files

## Average Faculty Salaries Comparison, 2006-2007

<i>Rank</i>	<i>Worcester State College</i>	<i>Five MA State Colleges</i>	<i>4-year Public Institutions</i>
Professor	\$78,395	\$75,753	\$95,638
Associate professor	\$64,538	\$62,468	\$69,363
Assistant professor	\$55,628	\$54,127	\$58,498
Instructor	\$50,498	\$45,678	\$41,637



Source: IR Official IPEDS Salary Files

## Library Information

---



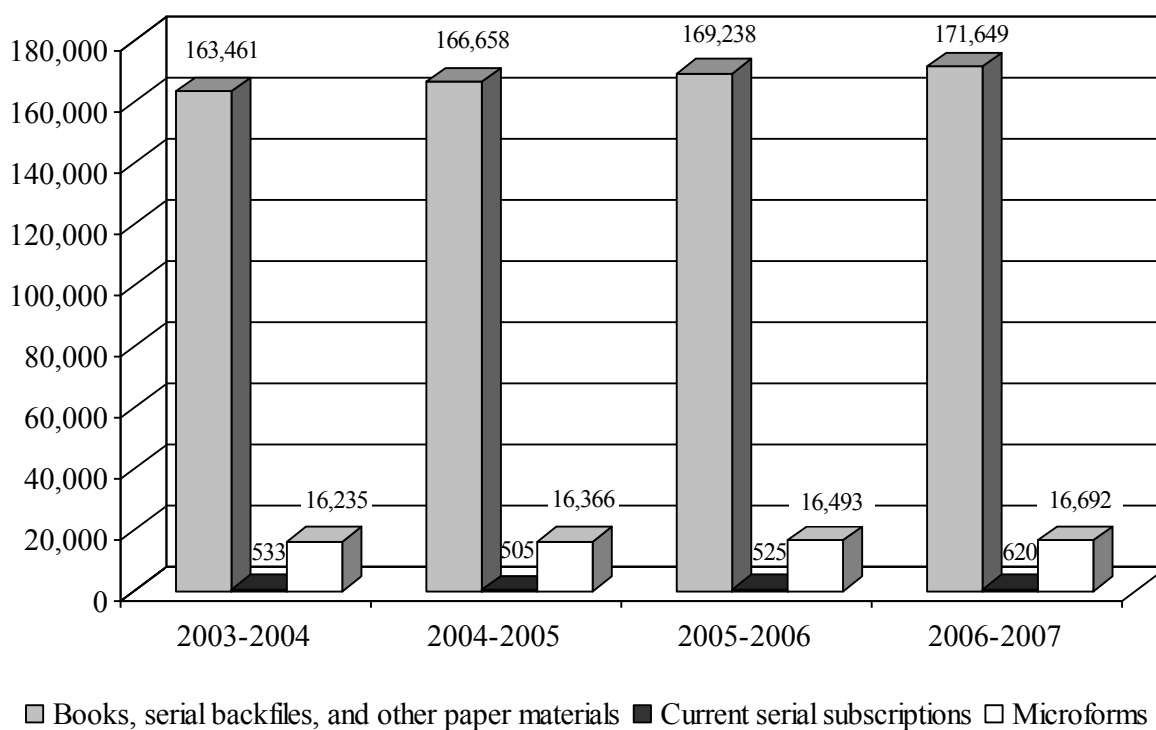
Fact Book 2006 & 2007

---

## Library Information

### Library Holdings, 2003-2007

Category	2003-2004	2004-2005	2005-2006	2006-2007
Books, serial backfiles, and other paper materials	163,461	166,658	169,238	171,649
Current serial subscriptions	533	505	525	620
Microforms	16,235	16,366	16,493	16,692



Source: NCES Library Reports



## Facilities Information

---



Fact Book 2006 & 2007

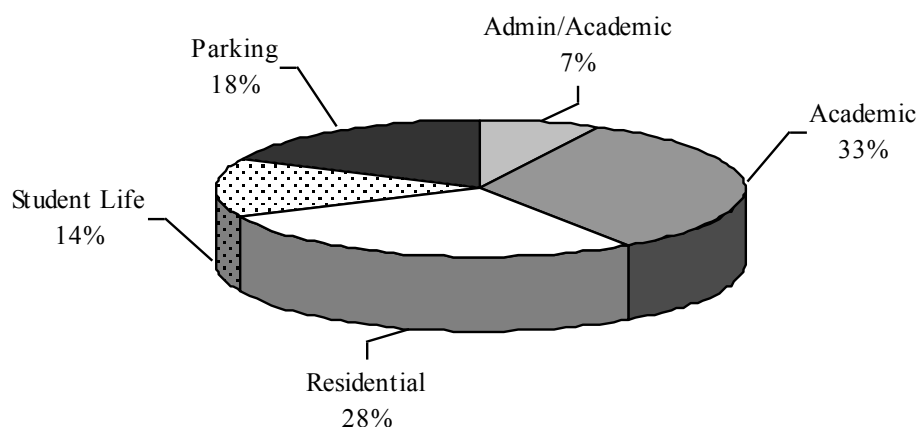
---

## Facilities Information

### Physical Plant Facilities, 2006-2007

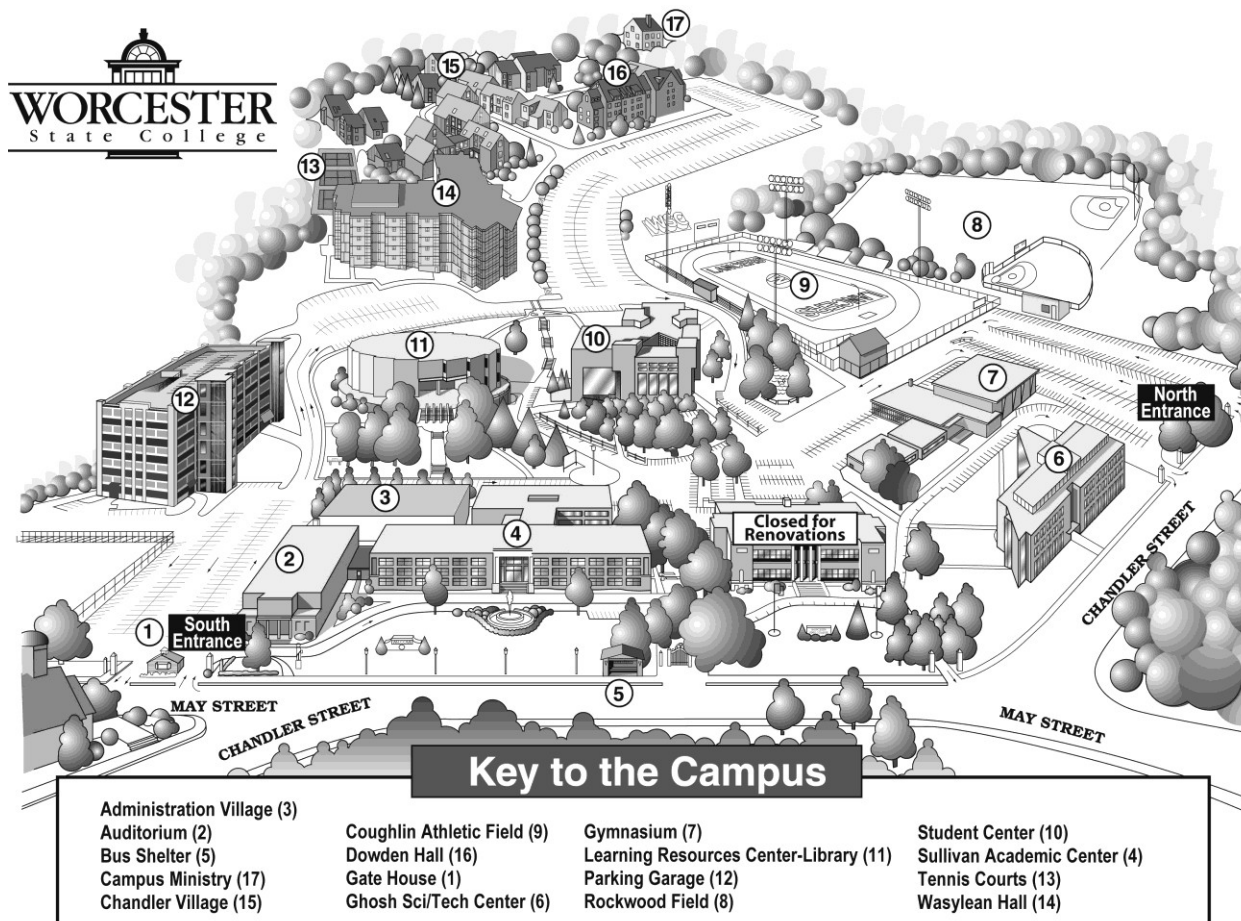
<i>Building Name</i>	<i>Primary Use</i>	<i>Gross sq. ft.</i>	<i>Assignable sq. ft.</i>	<i>Year</i>
1. Administration	Administrative, Academic	67,066	42,760	1932
2. Learning Resource Center	Library, Classrooms	113,335	92,745	1968
3. 96 Chicopee Street	Storage	1,170	936	1950
4. Sullivan Academic Center	Academic	110,690	74,315	1965
5. Science Tech Center	Academic	97,300	71,950	2000
6. Student Center	Student Affairs, Dining	71,416	46,080	1978
7. Gymnasium	Athletics, Art	65,676	39,425	1958
8. 102 Chicopee Street	Latino Educational Institute	1,120	895	1940
9. 134 Glendale Street	Latino Educational Institute	837	670	1952
10. 17 Candelwood Street	Campus Ministry	1,200	960	1927
11. Chandler Village	Housing	103,560	79,490	1973
12. Dowden Hall	Housing	56,600	32,660	1990
13. Wasylean Hall	Housing	109,000	70,510	2004
14. Parking Garage	Parking	172,317	155,085	2007

### Facilities Overview



Source: Office of Facilities

## Campus Map



Source: Office of Public Relations/Marketing



## Institutional Advancement

---

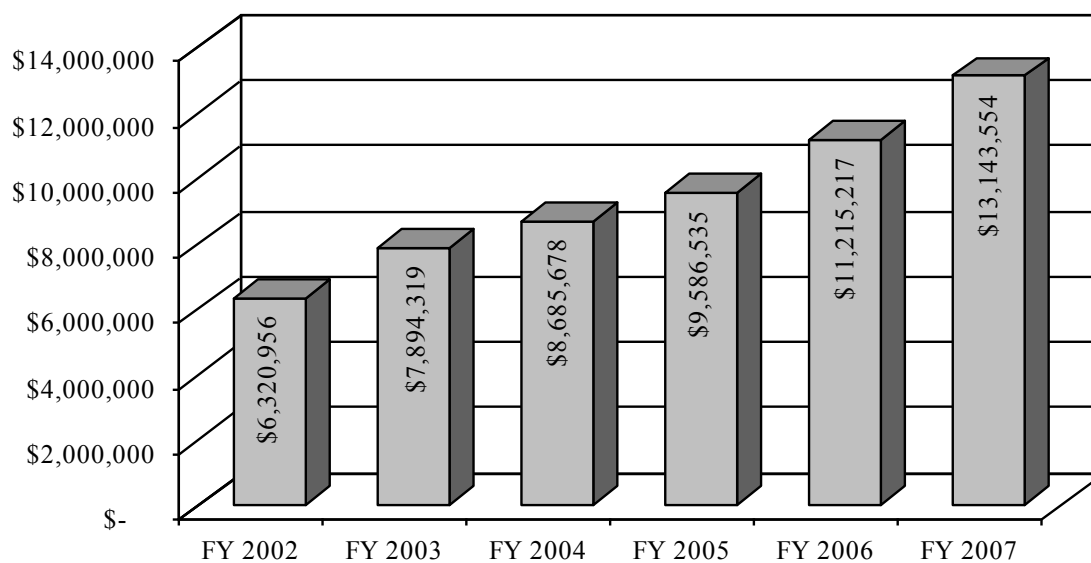


Fact Book 2006 & 2007

---

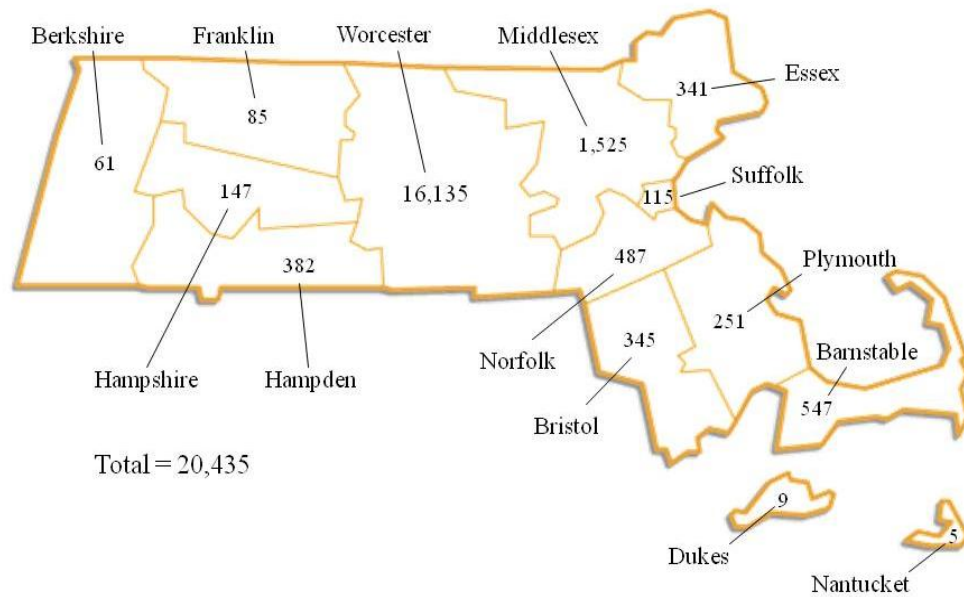


## Total Market Value of Endowment

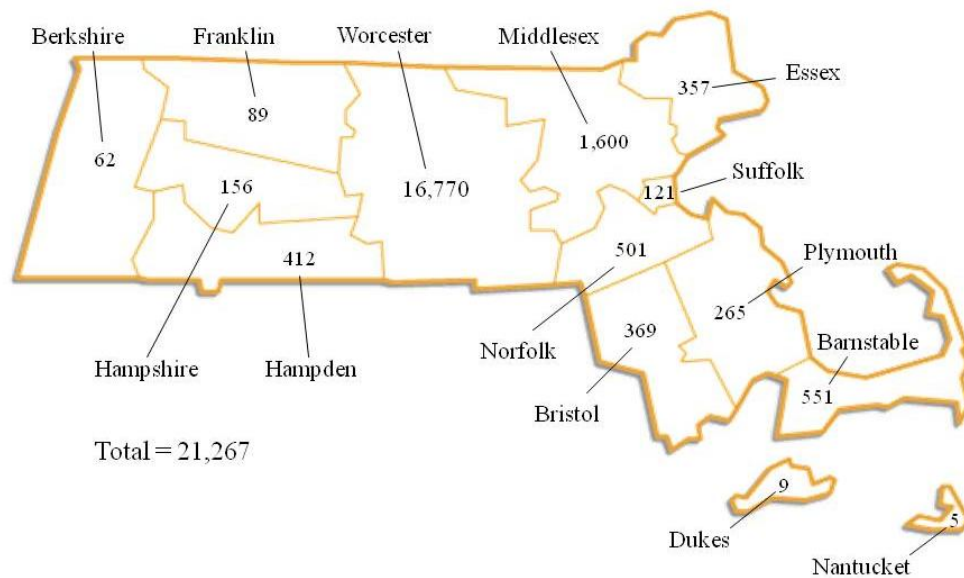


Source: Office of Institutional Advancement

## Alumni by County of Residence, 2006



## Alumni by County of Residence, 2007



Source: Office of Institutional Advancement



## Financial Information

---



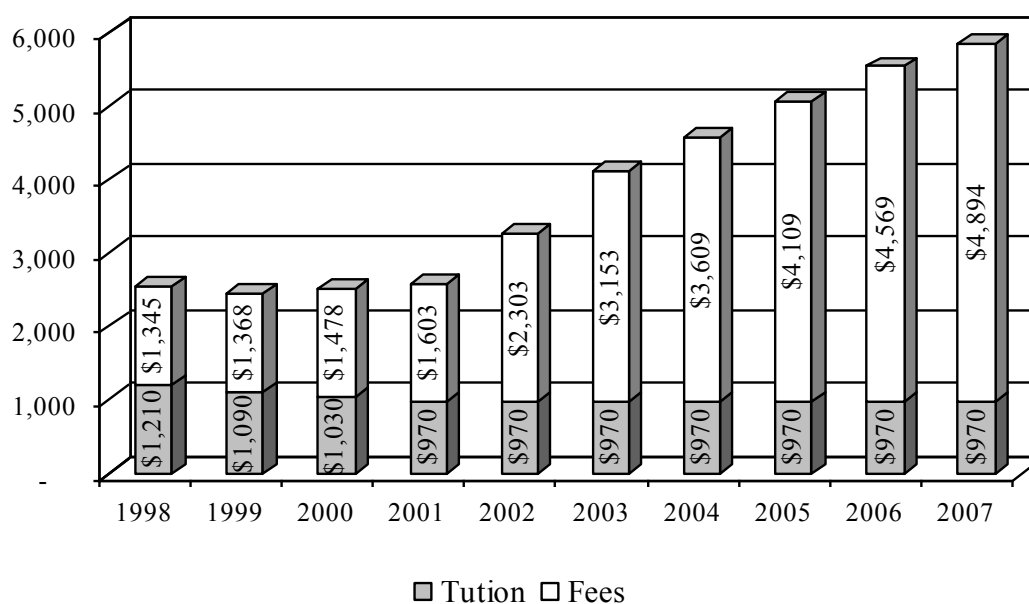
Fact Book 2006 & 2007

---

## Financial Information

### Tuition and Fees per Academic Year, Fall 1998-2007

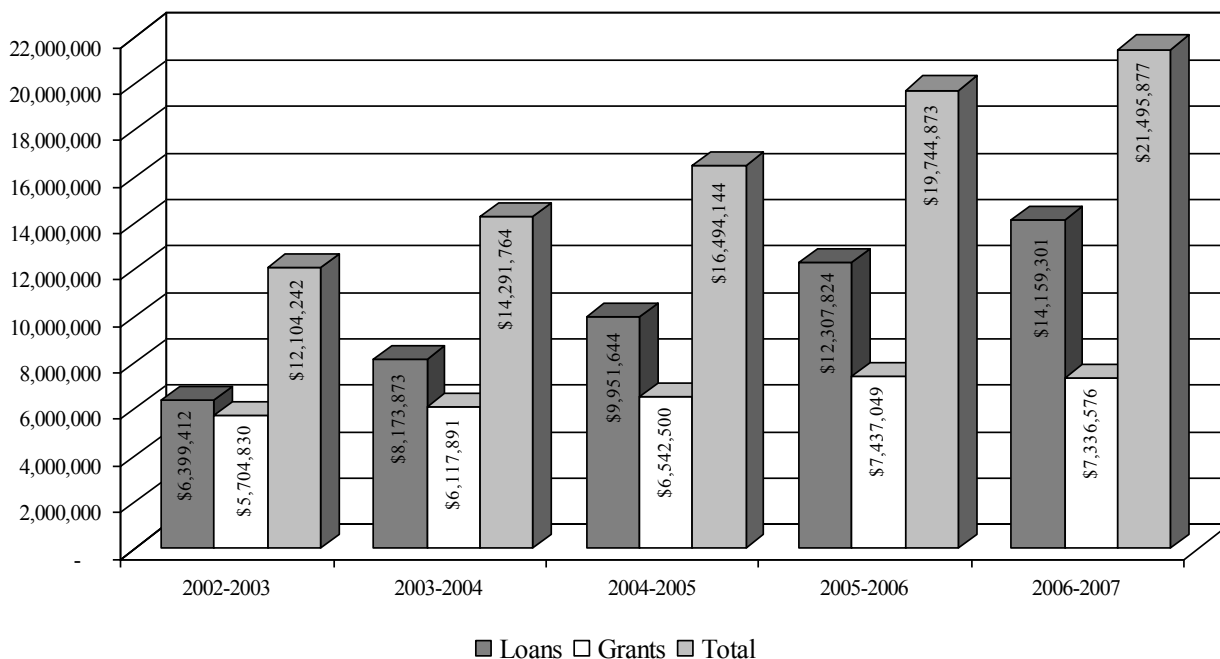
	1998	1999	2000	2001	2002	2003	2004	2005	2006	2007
Tuition	\$1,210	\$1,090	\$1,030	\$970	\$970	\$970	\$970	\$970	\$970	\$970
Fees	\$1,345	\$1,368	\$1,478	\$1,603	\$2,303	\$3,153	\$3,609	\$4,109	\$4,569	\$4,894
<b>Total</b>	<b>\$2,555</b>	<b>\$2,458</b>	<b>\$2,508</b>	<b>\$2,573</b>	<b>\$3,273</b>	<b>\$4,123</b>	<b>\$4,579</b>	<b>\$5,079</b>	<b>\$5,539</b>	<b>\$5,864</b>



Source: Office of Administration and Finance

## Financial Aid Awards, Fall 2002-2006

	2002-2003	2003-2004	2004-2005	2005-2006	2006-2007
Loans	\$6,399,412	\$8,173,873	\$9,951,644	\$12,307,824	\$14,159,301
Grants	\$5,704,830	\$6,117,891	\$6,542,500	\$7,437,049	\$7,336,576
<b>Total</b>	<b>\$12,104,242</b>	<b>\$14,291,764</b>	<b>\$16,494,144</b>	<b>\$19,744,873</b>	<b>\$21,495,877</b>



Source: Office of Financial Aid



## Revenues and Expenditures, FY 2006 – FY 2007

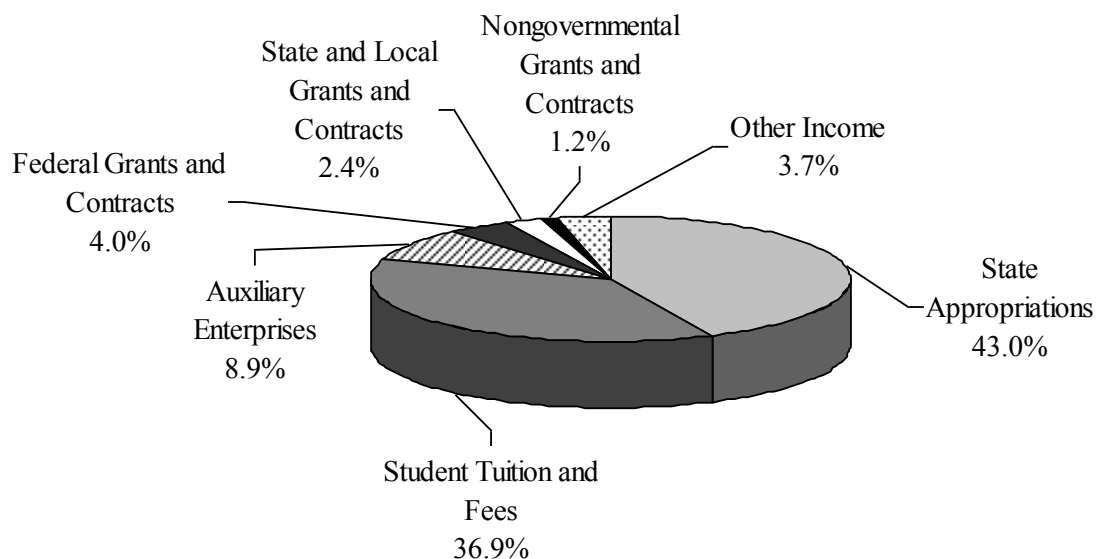
REVENUES	2007	2006
Operating Revenues		
Student Tuition and fees	\$ 26,687,982	\$ 25,062,104
Less: Scholarship discounts and allowance	3,153,048	3,357,210
Net student tuition and fees	23,534,934	21,704,894
Federal grants and contracts	2,531,039	2,464,721
State and local grants and contracts	1,556,975	1,479,720
Nongovernmental grants and contracts	739,041	578,506
Auxiliary enterprises	5,658,282	5,149,193
Other operating revenues	962,260	1,100,079
Total operating revenues	<u>\$ 34,982,531</u>	<u>\$ 32,477,113</u>
EXPENSES		
Operating expenses		
Instruction	\$ 24,371,832	\$ 22,037,790
Public service	732,331	656,270
Academic support	4,491,059	5,067,608
Student services	5,950,965	5,300,637
Institutional support	7,618,221	8,083,927
Operation and maintenance of plant	7,394,699	5,825,935
Scholarship	2,030,857	1,611,288
Depreciation	3,160,270	2,888,774
Debt service	575,806	240,751
Auxiliary enterprises	5,981,812	5,580,436
Total operating expenses	<u>\$ 62,307,852</u>	<u>\$ 57,293,416</u>
Operating loss	<u>\$ 27,325,321</u>	<u>\$ 24,816,303</u>
NONOPERATING REVENUES		
State appropriations	\$ 27,465,561	\$ 25,418,199
Interest and investment income	1,006,920	572,087
Other nonoperating revenues(expenses)	394,279	142,491
Net nonoperating revenues	<u>\$ 28,866,760</u>	<u>\$ 26,132,777</u>
Income before other revenues,expenses, gains or losses	\$ 1,541,439	\$ 1,316,474
Capital appropriations	958,732	1,171,321
Increase in net assets	2,500,171	2,487,795
NET ASSETS		
Beginning of year	\$ 55,170,946	\$ 52,683,151
End of year	<u>\$ 57,671,117</u>	<u>\$ 55,170,946</u>

Source: Financial Statements year ended June 30, 2007 and 2006 and Independent Auditor's Report

## Fund Revenues by Source – FY 2007

### REVENUES – Fiscal Year 2007

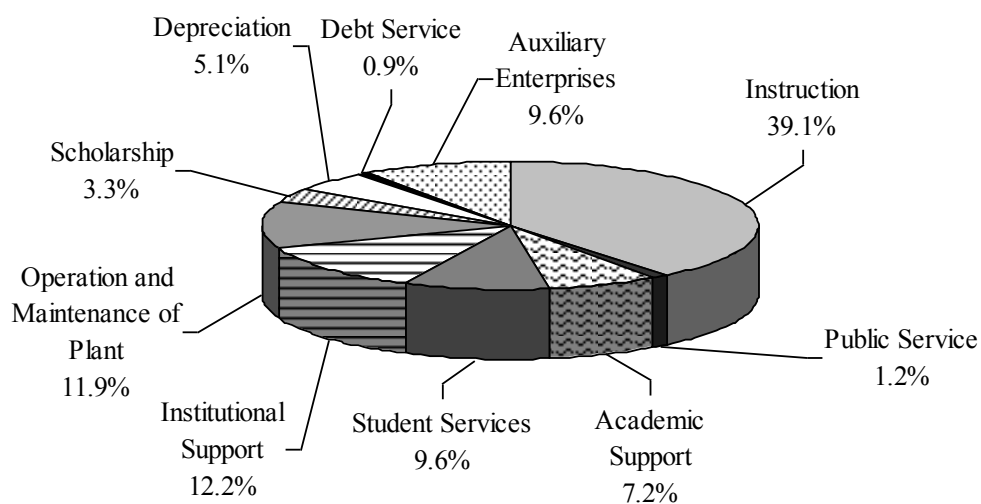
Total = \$63,849,291



## Fund Expenditures by Functions – FY 2007

### EXPENSES – Fiscal Year 2007

Total = \$62,307,852



Source: Financial Statements year ended June 30, 2007 and 2006 and Independent Auditor's Report

**Office of Institutional Research**

**Phone: 508-929-8121**

**Fax: 508-929-8083**



*A Higher State of Learning*